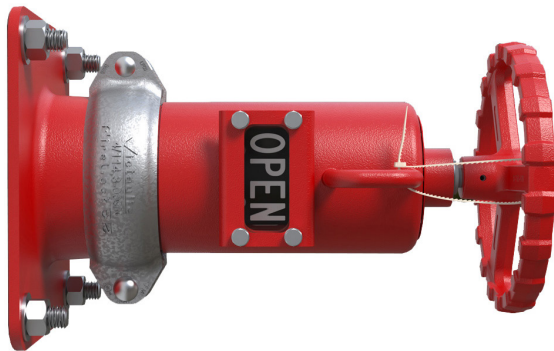


FireLock™ Series 775 Butterfly Valve Wall Post Indicator Assembly



SERIES 775



SERIES 775

⚠ WARNING



- Read and understand all instructions before attempting to install any Victaulic products.
- Always verify that the piping system has been completely depressurized and drained immediately prior to installation, removal, adjustment, or maintenance of any Victaulic products.
- Confirm that any equipment, branch lines, or sections of piping that may have been isolated for/during testing or due to valve closures/positioning are identified, depressurized, and drained immediately prior to installation, removal, adjustment, or maintenance of any Victaulic products.
- Wear safety glasses, hardhat, and foot protection.

Failure to follow these instructions could result in death or serious personal injury and property damage.

- These products shall be used only in fire protection systems that are designed and installed in accordance with current, applicable National Fire Protection Association (NFPA 12, 13D, 13R, etc.) standards, or equivalent standards, and in accordance with applicable building and fire codes. These standards and codes contain important information regarding protection of systems from freezing temperatures, corrosion, mechanical damage, etc.
- The installer shall understand the use of this product and why it was specified for the particular application.
- The installer shall understand common industry safety standards and potential consequences of improper product installation.

Failure to follow installation requirements and local and national codes and standards could compromise system integrity or cause system failure, resulting in death or serious personal injury and property damage.

TABLE OF CONTENTS

Hazard Identification 1

Introduction 2

Series 775 Standard Assembly Drawing 2

Series 775 Standard Assembly Dimensions, Weights,
and Valve Position Data 3

Series 775 Offset Layout Dimensions 3

Mounting Dimensions 4


Wall-Mount Installation 4


Series 775 Rooftop Kit Contents and Assembly Drawing 6

Series 775 Rooftop Assembly Dimensions, Weights,
and Valve Position Data 7


Rooftop Kit Installation 8

HAZARD IDENTIFICATION

 Definitions for identifying the various hazard levels are provided below. When you see this symbol, be alert to the possibility of personal injury. Carefully read and fully understand the message that follows.

 **WARNING**

- The use of the word “WARNING” identifies the presence of hazards or unsafe practices that could result in death or serious personal injury if instructions, including recommended precautions, are not followed.

 **CAUTION**

- The use of the word “CAUTION” identifies possible hazards or unsafe practices that could result in personal injury and product or property damage if instructions, including recommended precautions, are not followed.

NOTICE

- The use of the word “NOTICE” identifies special instructions that are important but not related to hazards.

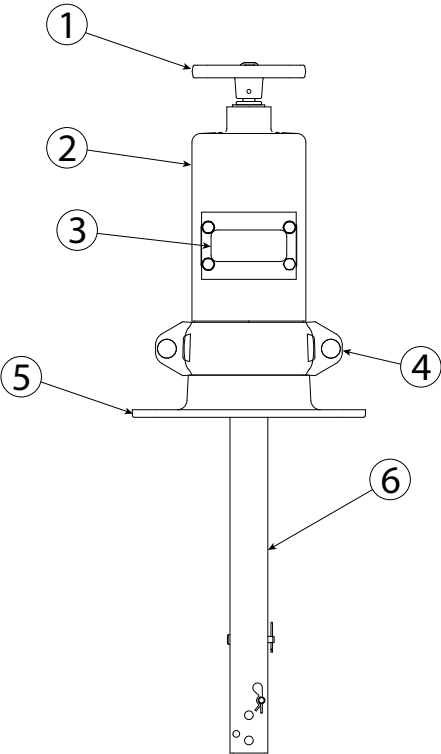
INTRODUCTION

The Series 775 FireLock™ Butterfly Valve Wall Post Indicator Assembly, outlined in these installation instructions, is compatible with the following:

- 2 – 8-inch/DN50 – DN200 Victaulic® Series 707C and 766 FireLock™ Butterfly Valves
- 2 – 12-inch/DN50 – DN300 Victaulic® Series 705 and 765 FireLock™ Butterfly Valves

The Series 775 is designed for above-ground applications on walls and rooftops (with rooftop kit), and it can be mounted in horizontal or vertical orientations.

SERIES 775 STANDARD ASSEMBLY DRAWING

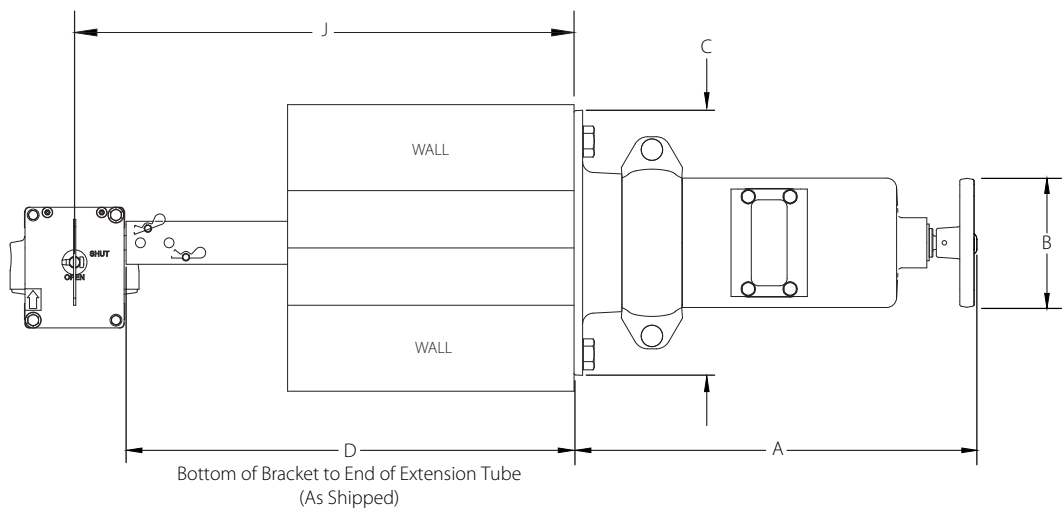


Item	Description
1	Handwheel
2	Body
3	Target Plates/Window Assembly
4	Coupling Assembly
5	Bracket
6	Extension Tube



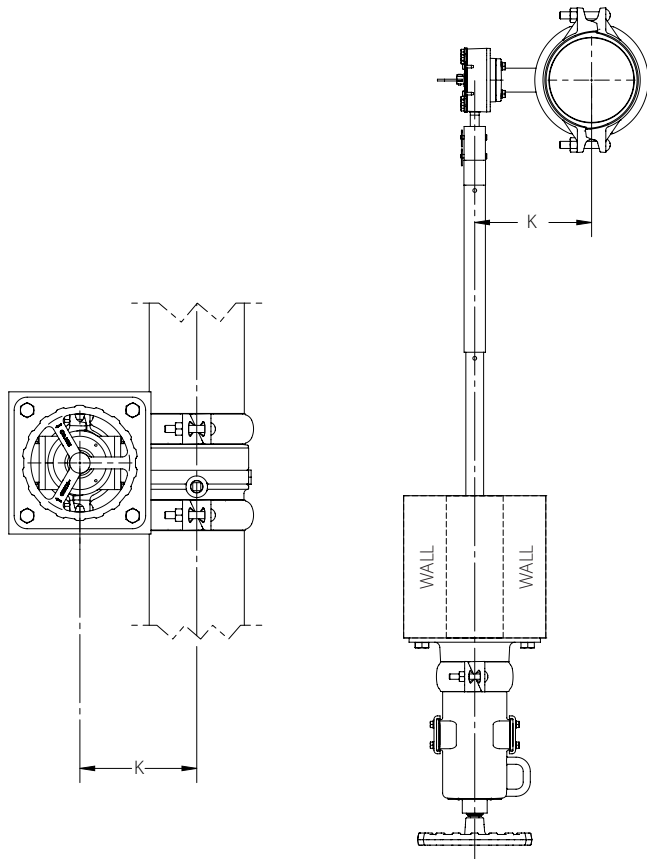
NOTE: The telescoping extension tube accommodates a range of valve locations relative to the wall. Refer to the following page for “Range of Valve Location” dimensions.

SERIES 775 STANDARD ASSEMBLY DIMENSIONS, WEIGHTS, AND VALVE POSITION DATA



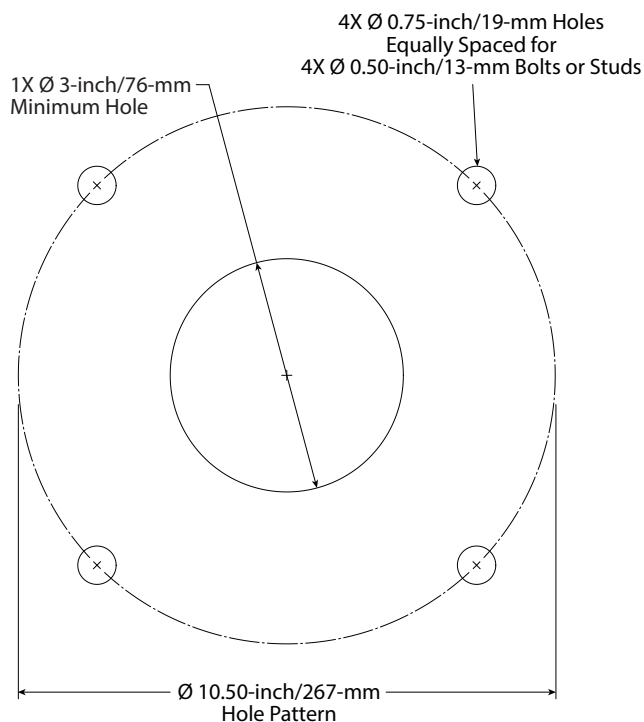
Nominal inches DN	A inches mm	B inches mm	C inches mm	D inches mm	Weight (Wall Post Only) lbs/kg	Range of Valve Locations	
						J Maximum inches mm	J Minimum inches mm
2 - 4 DN50 - DN100	14.00 355	4.50 115	9.25 235	13.38 338	31.0 14.0	37.88 962	17.63 448
6 - 8 DN150 - DN200	14.63 370	8.13 206	9.25 235	13.38 338	34.0 15.5	39.00 991	18.88 479
10 - 12 DN250 - DN300	15.63 395	11.88 300	9.25 235	13.38 338	39.0 17.5	40.00 1016	19.50 494

SERIES 775 OFFSET LAYOUT DIMENSIONS



Nominal inches DN	Actual Pipe Outside Diameter inches mm	Pipe Riser to Wall Post Offset Distance
		K inches DN
2 DN50	2.375 60.3	4.13 105
2 ½	2.875 73.0	5.25 133
DN65	3.000 76.1	5.25 133
3 DN80	3.500 88.9	5.50 140
4 DN100	4.500 114.3	6.25 159
5	5.563 141.3	7.75 197
	6.500 165.1	8.25 210
6 DN150	6.625 168.3	8.25 210
8 DN200	8.625 219.1	9.50 241
10 DN250	10.750 273.0	11.13 283
12 DN300	12.750 323.9	12.13 308

MOUNTING DIMENSIONS



1. Provide a 3-inch/76-mm minimum diameter through-hole on the wall or roof, aligned with the butterfly valve's gear operator stem. Refer to the "Series 775 Offset Layout Dimensions" table on the previous page for the pipe-to-drive-nut offset distance. The Series 775 Wall Post Indicator requires a quantity of four equally-spaced, ½-inch diameter bolts or studs on a 10.50-inch/267-mm diameter around the through hole for the wall post indicator. **NOTE:** A cardboard template is provided to facilitate correct placement of the holes.

WALL-MOUNT INSTALLATION

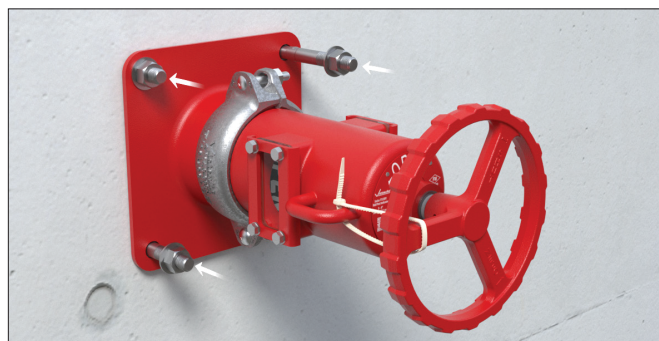
NOTICE

- Installation of the Series 775 BFV Wall Post Indicator shall be performed **AFTER** the Victaulic Butterfly Valve is installed in the piping system.

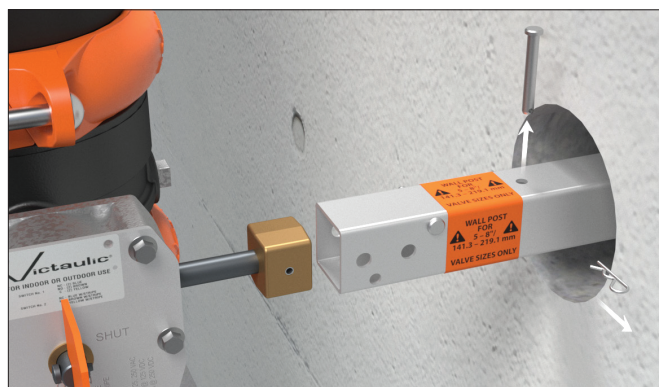
1. Install the butterfly valve with the gear operator's drive nut pointing toward the wall. Always reference the instructions provided with the valve for complete installation requirements.
2. Using a wrench on the gear operator's drive nut, fully OPEN the butterfly valve (gear operator's indicator flag shall point to the "OPEN" marking).
3. Mount the provided cardboard template onto the desired location on the wall and cut the required holes. Reference the "Mounting Dimensions" section on this page, along with the "Series 775 Offset Layout Dimensions" table on the previous page, for additional dimensional information.



4. Feed the extension tube into the through hole toward the gear operator's drive nut.



5. Install ½-inch bolts/studs with washers into the wall post indicator's bracket and wall. Tighten the hardware completely to secure the wall post indicator assembly to the wall.



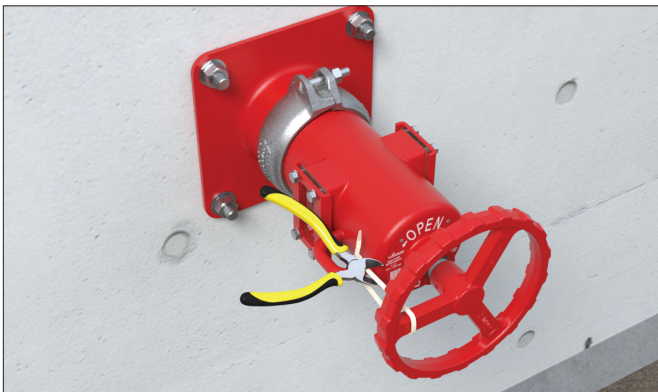
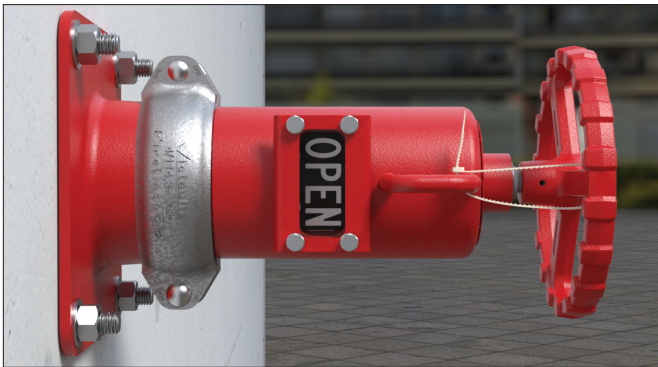
6. Remove and set aside the rear Cotter Pin/Clevis Pin.



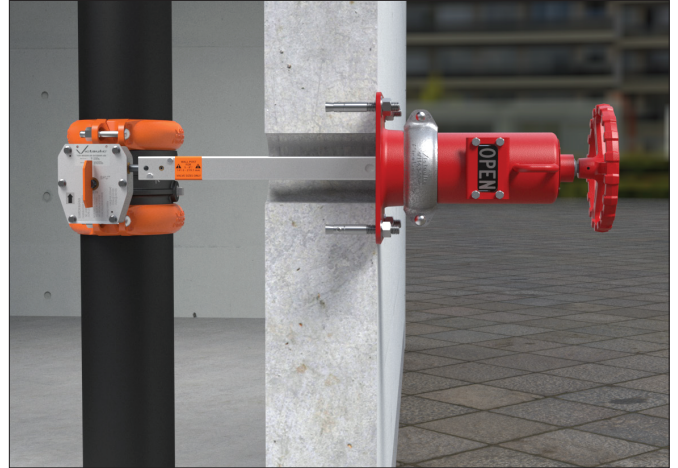
NOTE: The extension tube is now free to telescope onto the gear operator's drive nut.



7. Pull the extension tube onto the gear operator's drive nut and insert the Clevis Pin through the holes at the end of the extension tube. Install the Cotter Pin onto the end of the Clevis Pin. Confirm that the extension tube is fully engaged with the gear operator's drive nut and that the extension tube cannot be pulled away from the gear operator's drive nut.

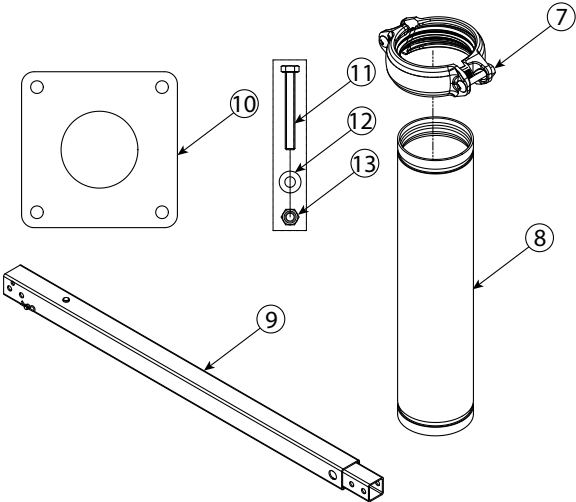


8. Confirm that the "OPEN" target plate is visible/centered within the window. Cut and remove the cable tie between the handwheel and body.



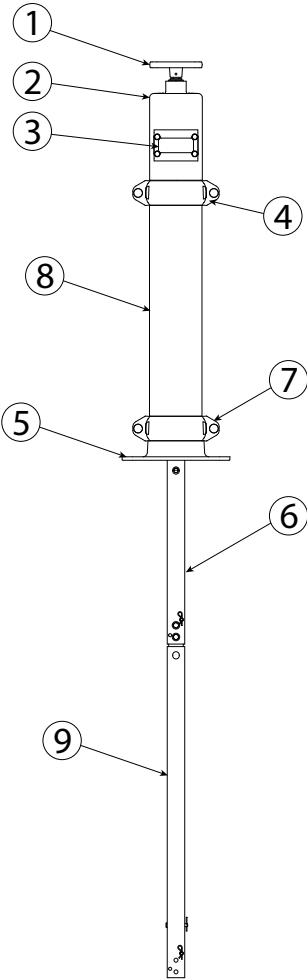
9. Turn the handwheel of the wall post indicator to check for proper operation of the butterfly valve. Verify that the "OPEN" target plate is completely visible in the window when the valve is in the fully open position and that the "SHUT" target plate is completely visible in the window when the valve is in the fully shut position.

SERIES 775 ROOFTOP KIT CONTENTS AND ASSEMBLY DRAWING

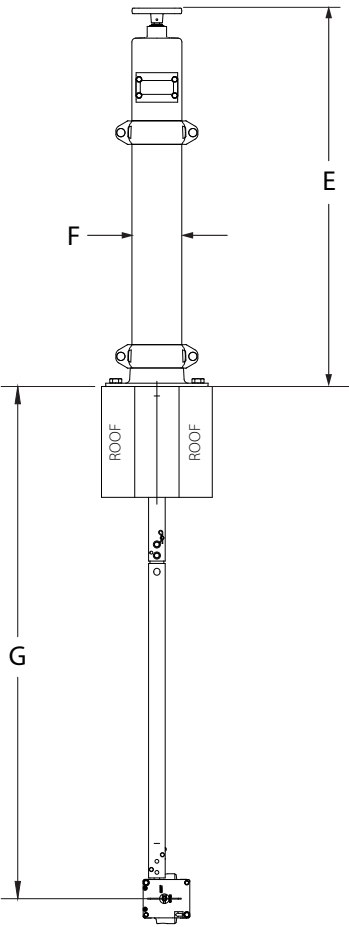


Item	Description
1	Handwheel*
2	Body*
3	Target Plates/Window Assembly *
4	Coupling Assembly*
5	Bracket*
6	Extension Tube for Standard Assembly*
7	Coupling Assembly for Pipe Extension
8	Pipe Extension for Rooftop Assembly
9	Extension Tube for Rooftop Assembly
10	Plate (Optional) for Rooftop Assembly
11	Hex Cap Screw for Rooftop Assembly Extension Tube
12	Plain Washer for Rooftop Assembly Extension Tube
13	Locknut for Rooftop Assembly Extension Tube

* Part of Standard Assembly



SERIES 775 ROOFTOP ASSEMBLY DIMENSIONS, WEIGHTS, AND VALVE POSITION DATA



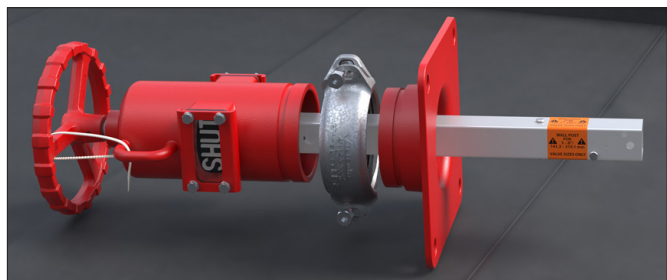
Nominal inches DN	E inches mm	F inches mm	Range of Valve Locations		Weight (Wall Post Only) lbs/kg
			G Maximum inches mm	G Minimum inches mm	
2 - 4 DN50 - DN100	34.25 868	4.50 115	70.75 1797	46.38 1177	55.0 25.0
6 - 8 DN150 - DN200	34.75 883	4.50 115	72.00 1829	47.63 1207	58.0 26.5
10 - 12 DN250 - DN300	35.75 908	4.50 115	72.88 1851	48.50 1232	62.0 28.0

ROOFTOP KIT INSTALLATION

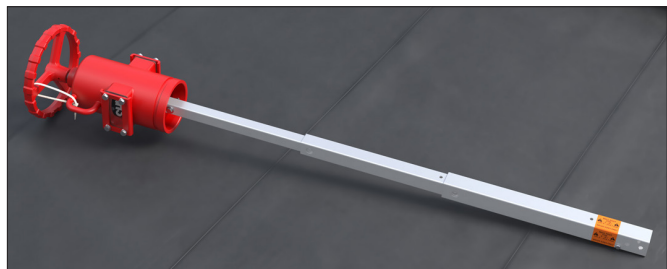
NOTICE

- Installation of the Series 775 BFV Wall Post Indicator shall be performed **AFTER** the Victaulic Butterfly Valve is installed in the piping system.

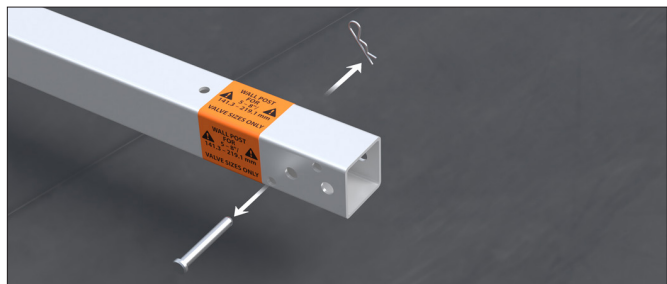
1. Install the butterfly valve with the gear operator's drive nut pointing upward, toward the roof. Always reference the instructions provided with the valve for complete installation requirements.
2. Using a wrench on the gear operator's drive nut, fully SHUT the butterfly valve (gear operator's indicator flag shall point to the "SHUT" marking).
3. Verify that all rooftop kit components are available for assembly and that the surface of the roof is dry and free from debris.



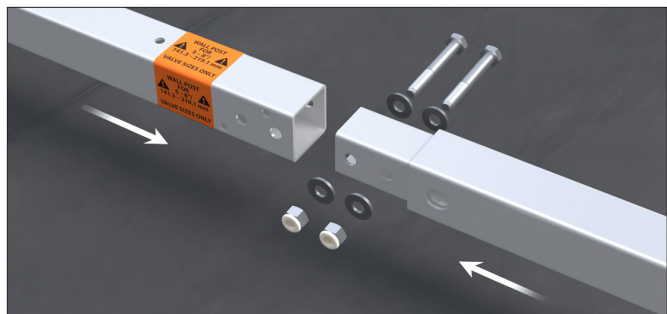
4. Remove the coupling from the standard assembly.



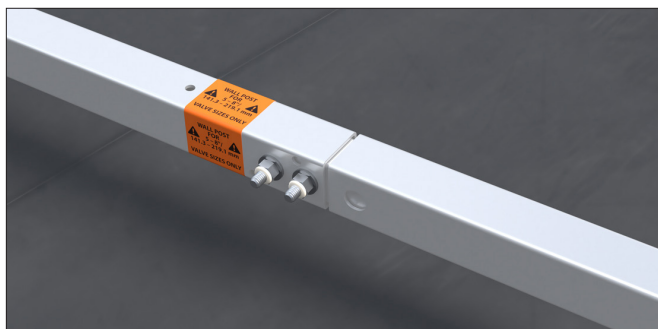
5. Fully extend standard assembly's extension tube.



6. Remove the Cotter Pin/Clevis Pin from the end of the standard assembly's tube.



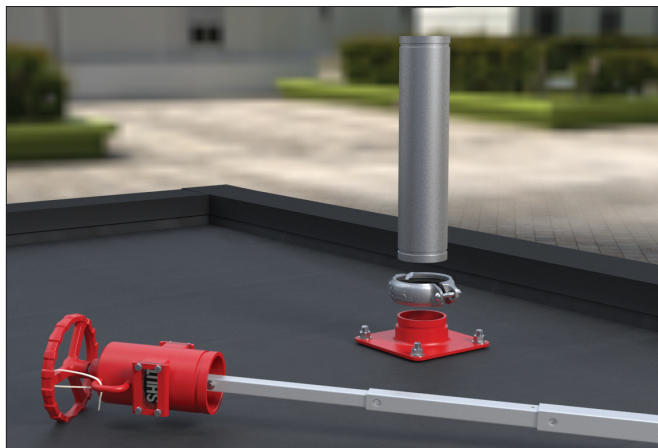
7. Connect the rooftop kit and standard assembly extension tubes with the hardware provided in the kit, as shown above.



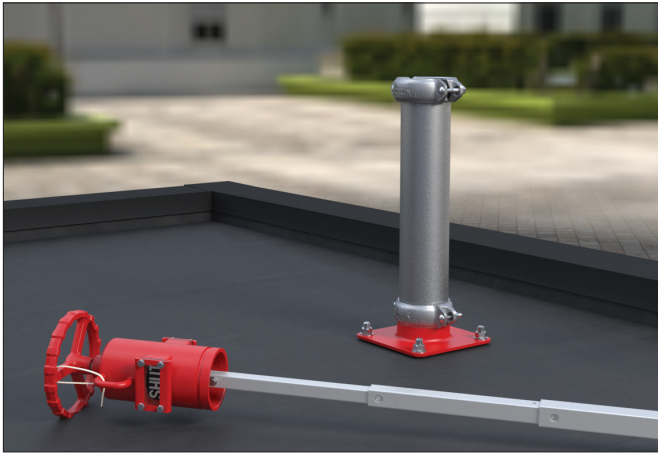
8. Tighten hardware completely.



- 9a. Mount the provided cardboard template onto the desired location on the roof and cut the required holes. Reference the "Mounting Dimensions" section on page 4, along with the "Series 775 Offset Layout Dimensions" table on page 3 for additional dimensional information. **NOTE:** A flange plate is provided in the kit and can be used underneath the bracket, if necessary, to provide extra stability for the assembly.
- 9b. Install ½-inch bolts/studs with washers into the bracket and roof. Tighten the hardware completely to secure the wall post indicator assembly to the roof.



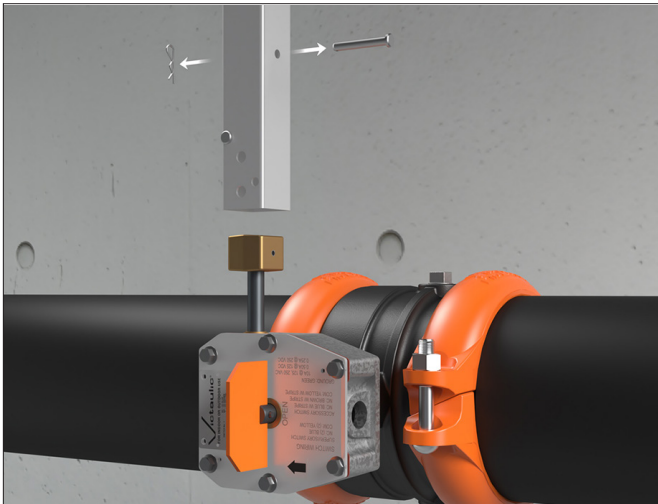
10. Attach the pipe extension to the bracket by using the coupling supplied in the kit. Always follow the applicable coupling installation instructions in the I-100 Field Installation Handbook, which can be downloaded at victaulic.com.



11. Place the coupling from the standard assembly onto the exposed end of the pipe extension. DO NOT tighten the coupling's hardware at this time.



12. Feed the extension tube into the pipe extension and through hole in the roof toward the gear operator's drive nut. Bring the body into position by aligning the groove in the body with the coupling housings' key sections. Install the coupling by following the applicable coupling installation instructions in the I-100 Field Installation Handbook, which can be downloaded at victaulic.com.



13. Remove and set aside the rear Cotter Pin/Clevis Pin. **NOTE:** The extension tube is now free to telescope onto the gear operator's drive nut.



14. Pull the extension tube onto the gear operator's drive nut and insert the Clevis Pin through the holes at the end of the extension tube. Install the Cotter Pin onto the end of the Clevis Pin. Confirm that the extension tube is fully engaged with the gear operator's drive nut and that the extension tube cannot be pulled away from the gear operator's drive nut.



15. Confirm that the "SHUT" target plate is visible/centered within the window. Cut and remove the cable tie between the handwheel and body.
16. Turn the handwheel of the wall post indicator to check for proper operation of the butterfly valve. Verify that the "OPEN" target plate is completely visible in the window when the valve is in the fully open position and that the "SHUT" target plate is completely visible in the window when the valve is in the fully shut position.

FireLock™ Series 775 Butterfly Valve Wall Post Indicator Assembly

For complete contact information, visit victaulic.com

I-775 18724 REV B UPDATED 12/2022 Z000775000
VICTAULIC IS A REGISTERED TRADEMARK OF VICTAULIC COMPANY AND/OR ITS AFFILIATED ENTITIES IN THE UNITED STATES AND/OR OTHER COUNTRIES. © 2022 VICTAULIC COMPANY. ALL RIGHTS RESERVED.

