

SPECIFICATIONS

FIGURE 7208

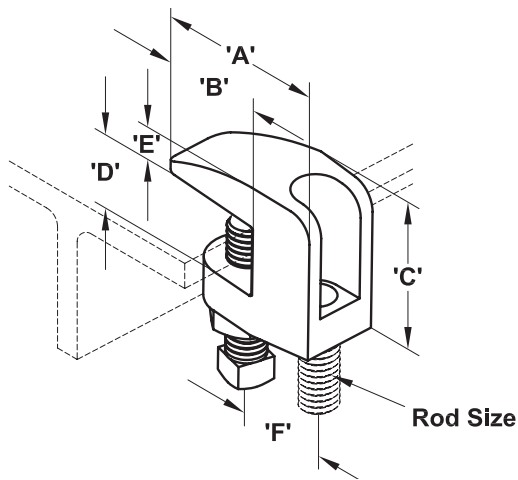
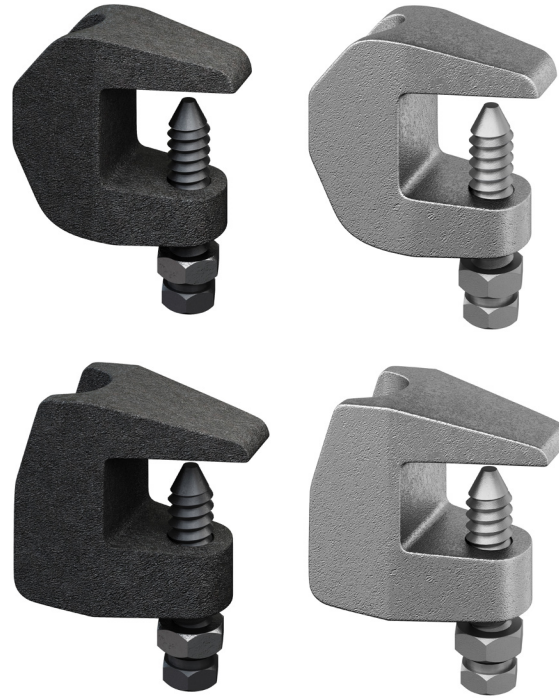
BEAM CLAMPS



UNIVERSAL JR. BEAM CLAMP

FEATURES

- Finish: Plain or zinc plated
- Material: Malleable iron, ASTM A47 Grade 32510
- Per: MSS SP-58, type 19
- Hanger rod not included
- 3/8" and 1/2" Universal Design: Allows for use in an upright and inverted position on the top and bottom flange of beam
- UL Approved
- FM Approved



REFERENCE CHART

Catalog Number	Finish	Rod Size	Max Load (lbs)	Dimensions (in.)						Wt. (oz)
				A	B	C	D	E	F	
FNW7208UPC	Plain	3/8"-16	400	1.83"	1.06"	1.60"	0.75"	0.41"	1"	5.07
FNW7208UZC	Zinc Plated	3/8"-16	400	1.83"	1.06"	1.60"	0.75"	0.41"	1"	5.30
FNW7208UPD	Plain	1/2"-13	800	2.05"	1.22"	1.83"	0.75"	0.44"	1"	8.50
FNW7208UZD	Zinc Plated	1/2"-13	800	2.05"	1.22"	1.83"	0.75"	0.44"	1"	8.67

Note: Do not overtighten the set screw or the clamp can be damaged. The set screw should be finger-tight, then given approximately an additional 1/4 to 1/3 turn. The recommended set screw torque is 5 ft-lbs (60 in-lbs).