

SPECIFICATIONS

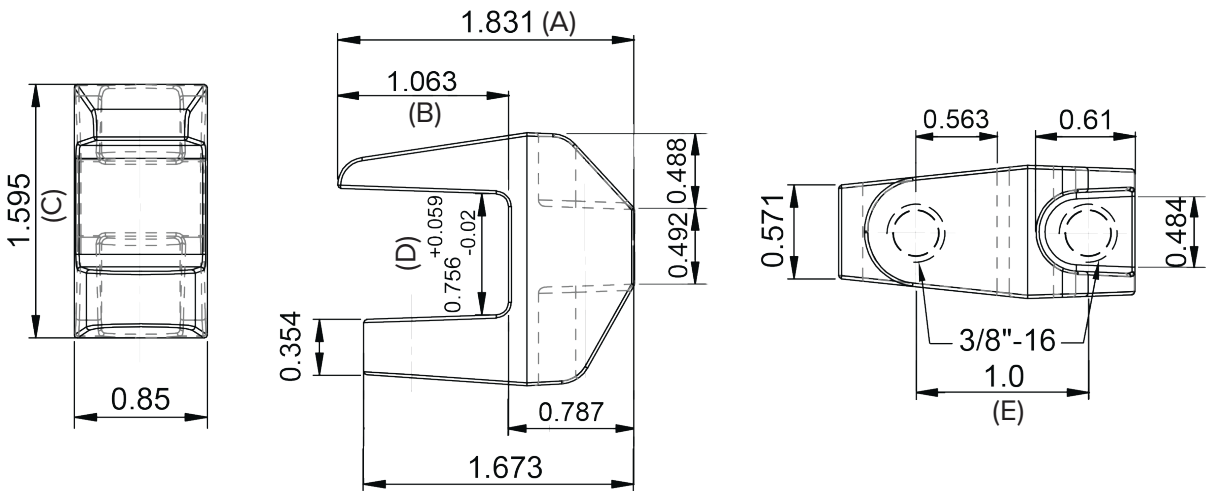
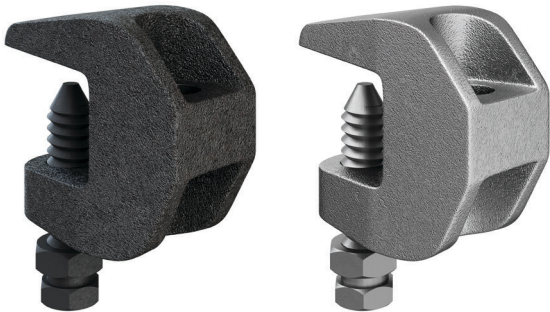
FIGURE 7208
BEAM CLAMPS



UNIVERSAL JR. BEAM CLAMP

FEATURES

- Finish: plain or zinc plated
- Material: malleable iron, ASTM A47 Grade 32510
- Per: MSS SP-58, type 19
- Hanger rod not included
- 3/8" and 1/2" universal design: allows for use in an upright and inverted position on the top and bottom flange of beam
- UL approved
- FM approved



REFERENCE CHART

Catalog Number	Finish	Rod Size	Max Load		Dimensions										Weight	
					in.					mm						
			lbs	kn	A	B	C	D	E	A	B	C	D	E	oz	kg
FNW7208UPC	Plain	3/8"-16	560	1.78	1.83	1.06	1.6	0.75	1	46.5	26.9	40.6	19.1	25.4	5.07	0.14
FNW7208UZC	Zinc Plated	3/8"-16	560	1.78	1.83	1.06	1.6	0.75	1	46.5	26.9	40.6	19.1	25.4	5.30	0.15

Note: Do not overtighten the set screw or the clamp can be damaged. The set screw should be finger-tight, then given approximately an additional 1/4 to 1/3 turn. The recommended set screw torque is 5 ft-lbs (60 in-lbs).

SPECIFICATIONS

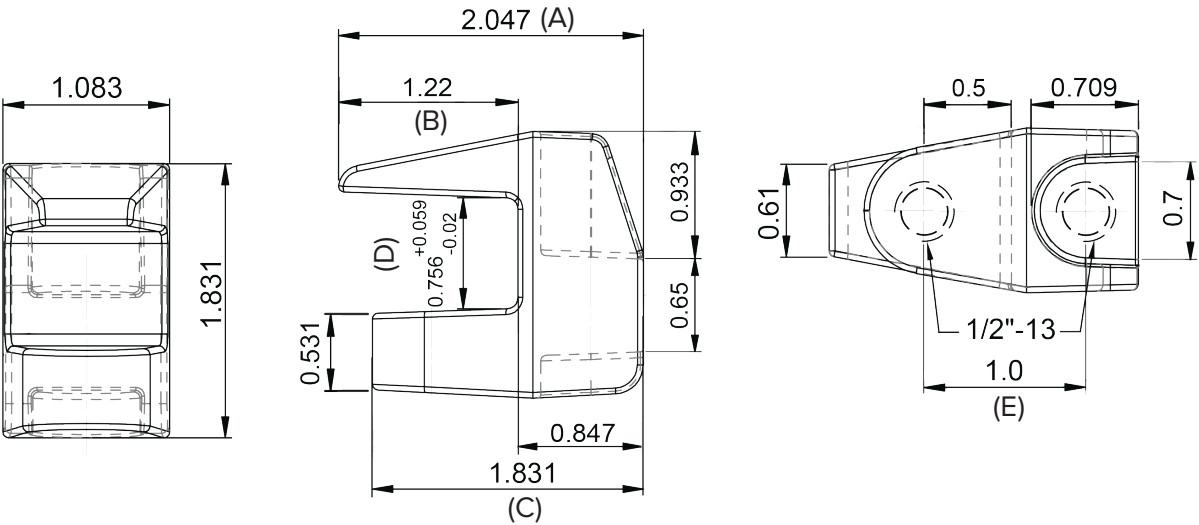
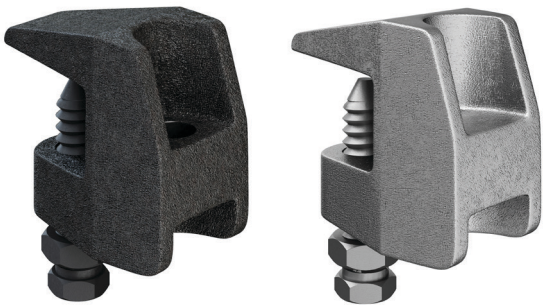
FIGURE 7208
BEAM CLAMPS



UNIVERSAL JR. BEAM CLAMP

FEATURES

- Finish: plain or zinc plated
- Material: malleable iron, ASTM A47 Grade 32510
- Per: MSS SP-58, type 19
- Hanger rod not included
- 3/8" and 1/2" universal design: allows for use in an upright and inverted position on the top and bottom flange of beam
- UL approved
- FM approved



REFERENCE CHART

Catalog Number	Finish	Rod Size	Max Load		Dimensions										Weight	
					in.					mm						
			lbs	kn	A	B	C	D	E	A	B	C	D	E	oz	kg
FNW7208UPD	Plain	1/2"-13	810	3.56	2.05	1.22	1.83	0.75	1	52.1	31.0	46.5	19.1	25.4	8.50	0.24
FNW7208UZD	Zinc Plated	1/2"-13	810	3.56	2.05	1.22	1.83	0.75	1	52.1	31.0	46.5	19.1	25.4	8.67	0.25

Note: Do not overtighten the set screw or the clamp can be damaged. The set screw should be finger-tight, then given approximately an additional 1/4 to 1/3 turn. The recommended set screw torque is 5 ft-lbs (60 in-lbs).