

# For Residential and Commercial Applications

Job Name		Engineer / Architect	
Job Location		Wholesaler	
Submittal Date		Contractor	

## DRS83X Integral Shut-Off Straight Stop w/ Lock Shield & Screwdriver Slot – Female Iron Pipe x Male Iron Pipe

**Use:** For use in potable water distribution systems in accessible locations only. Not intended for recirculating water systems that produce continuous use temperatures above 115° F. For those applications use our KT™ series ball stop.

### Design Features:

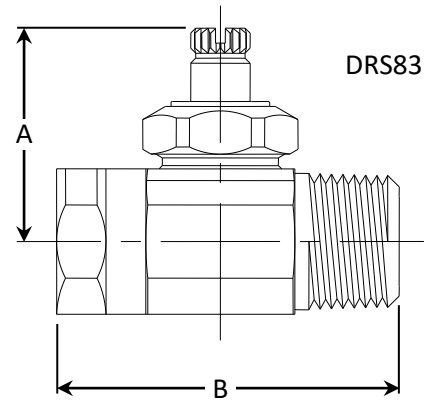
- **Machined one-piece brass body** provides strength, durability, and long-lasting performance
- **Screwdriver slot stem** helps protect against accidental stop operation during rough-ins and in general use



### Operating Specifications:

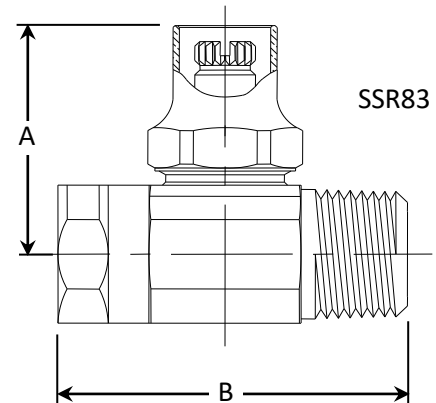
**Temperature:** 40° - 140° F

**Pressure:** 125 PSI maximum



STOP MATERIAL SPECIFICATIONS	
<b>Body</b>	Brass, plated
<b>Screwdriver Slot Stem</b>	Brass, plated
<b>Bib &amp; Packing Washers</b>	Rubber
<b>Packing Nut</b>	Brass, plated

PART DIMENSIONS (Inches)		
Model	DIM. A	DIM. B
DRS83X	1.38	2.10
SSR83X	1.52	2.10



### Part Listing:

- ☐ DRS83X CBT 1/2" FIP x 1/2" MIP with screwdriver slot, chrome plated, bulk, plain pkg
- ☐ DRS83X R 1/2" FIP x 1/2" MIP with screwdriver slot, rough brass
- ☐ DRS83X R1 1/2" FIP x 1/2" MIP with screwdriver slot, rough brass, window tray
- ☐ DRS83X RBT 1/2" FIP x 1/2" MIP with screwdriver slot, rough brass, bulk, plain pkg
- ☐ SSR83X R 1/2" FIP x 1/2" MIP with lock shield, rough brass

### Listings & Certifications:

- IAPMO listed to ASME A112.18.1 /CSA B125.1



This specification and all information contained herein is the confidential and exclusive property of Brasscraft Manufacturing Company and shall not be disclosed to others without the written consent of Brasscraft Mfg. Co. This specification must be returned to Brasscraft Mfg. Co. if requested.

(includes NSF/ANSI372& NSF61)

*This specification and all information contained herein is the confidential and exclusive property of Brasscraft Manufacturing Company and shall not be disclosed to others without the written consent of Brasscraft Mfg. Co. This specification must be returned to Brasscraft Mfg. Co. if requested.*

400.131 DRS83X Integral Shut-Off w/Screwdriver Slot-FIPxMIP REV 9.19

**BrassCraft®**

©2019 Brasscraft Manufacturing Company