

Butterfly Valve – Epoxy Series 7700



AE7721-3
Series 7700 butterfly valve
with 10 position lever lock



AE7722-3
Series 7700 butterfly
valve with gear operator

AE7721-3

Used in commercial grooved-end piping systems 2" through 12".

The uniqueness of the Series 7700 Gruvlok Butterfly Valve begins with the spherical bore of the disc seat area. This facilitates a constant DISC-TO-SEAT loading that maintains a leak tight seal regardless of disc position. The stem sealing force is constant through the full disc cycle and operating torques are kept low which increases valve life. The design provides a bubble tight seal from full vacuum to 300 psi when the valve is closed. The valve is rated for dead-end service to a full pressure rating of 300 psi. Manufactured without silicone Series 7700 available upon special request.

AE7722-3

The stem-to-disc connection provides zero backlash. The high strength, corrosion resistant, stainless steel stems are blow-out proof. Each stem is fitted with a

secondary seal that also provides a lifetime lubrication chamber.

The Series 7700 valve is designed with the contractor in mind. The valve body is a rugged one-piece casting with an integral mounting base for gear operator or handle actuation, while providing room for a minimum of 2" of pipe insulation. The valve is designed and manufactured to meet or exceed the requirements of MSS SP-67.

For data on fire protection listings/ approvals, contact your ASC Engineered Solutions representative.

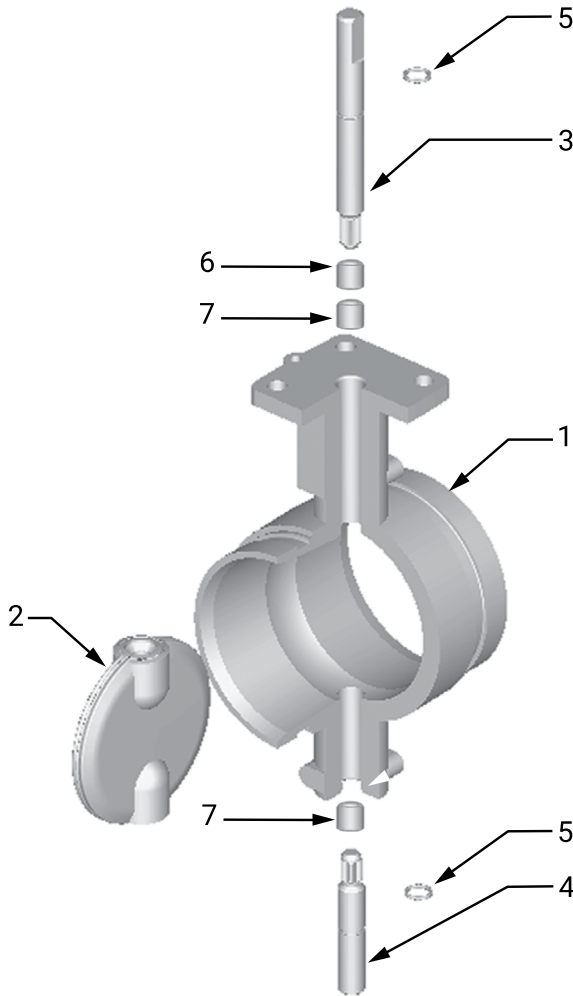


2" - 10" Series 7700
Certified to NSF/ANSI 61
(cold water) and Annex G
LEAD FREE



PROJECT INFORMATION	APPROVAL STAMP
Project:	Approved
Address:	Approved as noted
Contractor:	Not approved
Engineer:	Remarks:
Submittal Date:	
Notes 1:	
Notes 2:	

Butterfly Valve – Epoxy Series 7700



Material Specifications

1. Body

Ductile Iron conforming to ASTM A 536, Grade 65-45-12

Body Coating

Epoxy

2. Disc

Ductile Iron conforming to ASTM A 536 Grades 65-45-12

Disc Encapsulation

Properties as specified in accordance with ASTM D 2000.

Grade E (EPDM): Service Temperature Range -40°F to +230°F (-40°C to +110°C)
Recommended for water service, dilute acids, alkalies, oil-free air and many chemical services.
Not For Use In Petroleum Services.

Grade T (Nitrile): Service Temperature Range -20°F to +180°F (-29°C to +82°C)
Recommended for petroleum products, air with oil vapors, vegetable oils and mineral oils.
Not For Use In Hot Water Services.

3, 4. UPPER AND LOWER SHAFT

Type 416 Stainless Steel

5. O-RINGS

Compatible with disc coating

6, 7. TOP AND BOTTOM BRONZE SLEEVE BUSHINGS

8", 10", & 12" Valve only

Gruvlok Butterfly Valve Series 7700 (Ordering Information)

Sample Part Number 8" AE77-7721-3 -->	8"	A	E	77	2	1 -	3	Special
	Size	Body Style	Body Coating	Series	Disc Coating	Operator	Stem	
	2" - 12"	A	E - Epoxy	77-77XX	1 - Nitrile (Grade T) 2 - EPDM (Grade E)	0 - None 1 - 10 Pos. L/Lock 2 - Gear Operator D - Infinite Pos. w/Memory Stop 4 - Short 10 Pos. L/lock Operator	3 - 416 S.S.	MWS - Manufactured without Silicone

Note: For operator safety, hand levers on the 10" and 12" valves are not available. Hand levers on the 8" valve will be limited to 150 psi to ensure safe operation. 8" valves supplied with a hand wheel will carry the full 300 psi pressure rating.



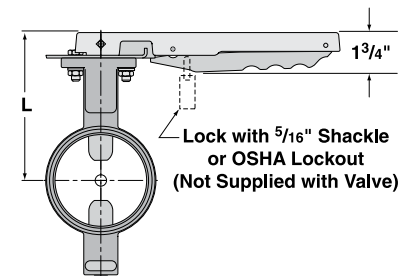
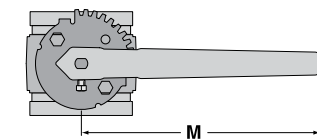
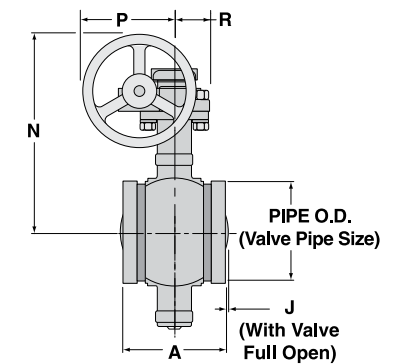
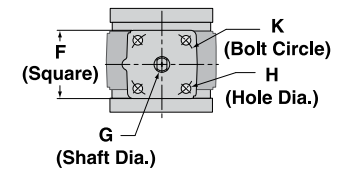
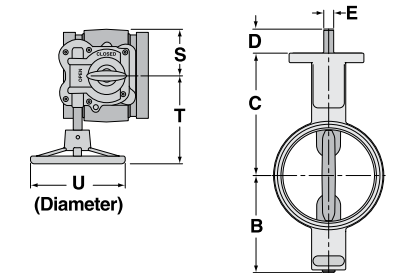
asc-es.com

Building connections that last™

Butterfly Valve – Epoxy Series 7700

Series 7700 Butterfly Valve Dimensions

Dimensions	Valve Size (ANSI/DN)								
	2	2½	3	4	5	6	8	10	12
In./mm	50	65	80	100	125	150	200	250	300
O.D.	2¾	2⅞	3½	4½	5⅝	6⅝	8⅝	10¾	12¾
In./mm	60.3	73.0	88.9	114.3	141.3	168.3	219.1	273.1	323.9
A	3⅜	3⅜	3⅜	4⅝	5⅜	5⅜	5¼	6¼	6½
	81.0	96.8	96.8	117.3	147.6	147.6	133.4	158.8	165.1
B	3	3⅜	3⅜	4¼	5	5½	6⅝	8	9
	75.4	80.8	96.5	108.5	126.5	138.9	175.8	202.9	229.4
C	4⅜	4⅜	5⅜	5⅝	5⅞	6⅜	7¾	9½	10½
	105.9	111.3	129.0	136.7	149.4	161.8	196.9	240.3	266.7
D	1⅜	1⅜	1⅜	1⅜	1⅜	1⅜	1⅝	1⅝	1⅝
	26.9	26.9	26.9	26.9	26.9	26.9	41.1	41.1	41.1
E	7/16	7/16	7/16	7/16	7/16	7/16	¾	¾	¾
	11.1	11.1	11.1	11.1	11.1	11.1	19.1	19.1	19.1
F	3	3	3	3	3	3	5	5	5
	76.2	76.2	76.2	76.2	76.2	76.2	127.0	127.0	127.0
G	9/16	9/16	9/16	9/16	7/8	7/8	1	1¼	1¼
	14.3	14.3	14.3	14.3	22.2	22.2	25.4	31.8	31.8
H	7/16	7/16	7/16	7/16	7/16	7/16	½	½	½
	11.1	11.1	11.1	11.1	11.1	11.1	13.5	13.5	13.5
J	-	-	-	-	-	1/8	1⅜	1⅞	2¾
	-	-	-	-	-	3.3	34.8	47.0	70.1
K	3	3	3	3	3	3	5	5	5
	76.2	76.2	76.2	76.2	76.2	76.2	127.0	127.0	127.0
L	5⅝	5½	6¼	6½	7	7½	-	-	-
	135.1	140.5	158.2	165.9	178.6	191.0	-	-	-
M	10½	10½	10½	10½	10½	10½	-	-	-
	266.7	266.7	266.7	266.7	266.7	266.7	-	-	-
N	7⅜	8	8⅜	9	9½	10	14⅝	16⅝	20⅜
	198.0	203.3	221.1	228.7	241.4	253.9	379.2	422.7	525.3
P	4	4	4	4	4	4	8⅜	8⅜	11⅝
	102.1	102.1	102.1	102.1	102.1	102.1	204.5	204.5	295.4
R	1½	1½	1½	1½	1½	1½	2⅝	2⅝	2⅝
	38.2	38.2	38.2	38.2	38.2	38.2	58.5	58.5	65.5
S	2	2	2	2	2	2	2⅝	2⅝	3¼
	51.0	51.0	51.0	51.0	51.0	51.0	66.0	66.0	83.0
T	6⅝	6⅝	6⅝	6⅝	6⅝	6⅝	10⅜	10⅜	13⅜
	160.3	160.3	160.3	160.3	160.3	160.3	275.3	275.3	350.3
U	5	5	5	5	5	5	12	12	18
	127.0	127.0	127.0	127.0	127.0	127.0	304.8	304.8	457.2



asc-es.com

Building connections that last™

Note: 3" or 5" handwheels may be included on valves sizes 2" - 4". Contact your ASC Engineered Solutions Rep. for additional information.

Butterfly Valve – Epoxy Performance Data Series 7700

Maximum Working Pressure Rating: 300 PSI
(Commercial Applications – Sizes 2" thru 12")

CV Values

Valve Size	O.D.	Disc Position (degrees open)							
		25°	30°	40°	50°	60°	70°	80°	90°
In./mm	In./mm								
2	2.375	4	7	19	44	48	80	111	158
50	60.3	0.3	0.5	1.3	3.0	3.3	5.5	7.7	10.9
2½	2.875	9	14	34	78	84	142	196	280
65	73.0	0.6	1	2.3	5.4	5.8	9.8	13.5	19.3
3	3.500	14	20	50	112	128	215	285	400
80	88.9	1.0	1.4	3.4	7.7	8.8	14.8	19.7	27.6
4	4.500	29	41	100	239	250	420	582	826
100	114.3	2.0	2.8	6.9	16.5	17.2	29.0	40.1	57.0
5	5.563	62	76	182	415	445	780	1,100	1,480
125	141.3	4.3	5.2	12.5	28.6	30.7	53.8	75.8	102.0
6	6.625	96	141	325	755	809	1,370	1,920	2,678
150	168.3	6.6	9.7	22.4	52.1	55.8	94.5	132.4	184.6
8	8.625	172	252	592	1,365	1,460	2,430	3,410	4,819
200	219.1	11.9	17.4	40.8	94.1	100.7	167.5	235.1	332.3
10	10.750	230	328	792	1,825	1,962	3,260	4,590	6,431
250	273.1	15.9	22.6	54.6	125.8	135.3	224.8	316.5	443.4
12	12.75	418	604	1,440	3,350	3,590	5,980	8,750	11,947
300	323.9	28.8	41.6	99.3	231.0	247.5	412.3	603.3	823.7

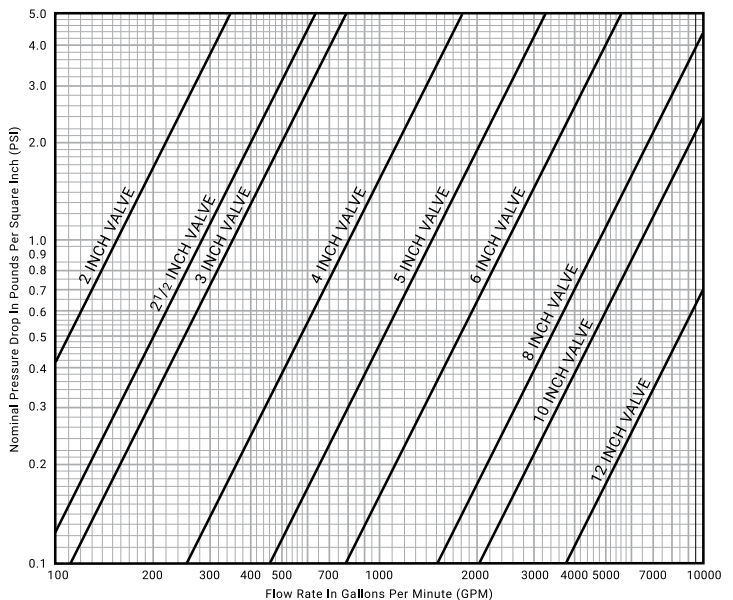
Headloss Equivalent Length Of Pipe

Valve Size	O.D.	Equivalent Feet of Pipe* C=120			Max. Insulating Thickness
		Sch. 10	Sch. 30	Sch. 40	
In./mm	In./mm	Ft./m			In./mm
2	2.375	5.8	-	4.7	2
50	60.3	1.8	-	1.4	50
2½	2.875	5.1	-	3.7	2½
65	73.0	1.6	-	1.1	65
3	3.500	9.6	-	7.2	2
80	88.9	2.9	-	2.2	50
4	4.500	7.5	-	5.7	2½
100	114.3	2.3	-	1.7	65
5	5.563	7.0	-	5.6	2½
125	141.3	2.1	-	1.7	65
6	6.625	6.1	-	4.8	2½
150	168.3	1.9	-	1.5	65
8	8.625	6.3	5.7	-	2½
200	219.1	1.9	1.7	-	65
10	10.750	11.3	10.2	-	3
250	273.1	3.4	3.1	-	80
12	12.750	8.4	7.4	-	3½
300	323.9	2.6	2.3	-	90

* The equivalent feet of pipe is based on the Hazen and Williams formula and the flow rates typically used with each size valve.

Valve Weight And Torque Values

Valve Size	O.D.	* Approx. Wt. Ea.	Operating Pressure				
			50 PSIG	100 PSIG	150 PSIG	200 PSIG	300 PSIG
In./mm	In./mm	Lbs./Kg	† Breakaway Torque (In. - Lbs) / N-m				
2	2.375	5	72	90	100	120	200
50	60.3	2.3	8.1	10.2	11.3	13.6	22.6
2½	2.875	10	105	126	144	162	250
65	73.0	4.5	11.9	14.2	16.3	18.3	28.2
3	3.500	11	126	139	168	195	425
80	88.9	5.0	14.2	15.7	19.0	22	48.0
4	4.500	15	265	285	320	355	800
100	114.3	6.8	29.9	32.2	36.2	40.1	90.4
5	5.563	20	491	578	615	674	850
125	141.3	9.0	55.5	65.3	69.5	76.2	96.0
6	6.625	46	625	678	760	820	1,650
150	168.3	20.9	70.6	76.6	85.9	92.7	186.4
8	8.625	68	1,170	1,400	1,640	1,760	3,200
200	219.1	30.8	132.2	158.2	185.3	198.9	361.6
10	10.750	78	1,930	2,375	2,860	3,100	6,000
250	273.1	35.4	218.1	268.4	323.2	350.3	678.0
12	12.75	91	2,900	3,420	4,760	5,600	11,000
300	323.9	41.3	327.7	386.4	537.9	632.8	1,242.9



asc-es.com

† These values are valid for water and lubricating fluid service only. Contact ASC Engineered Solutions for information on torques for dry and non-lubricating fluid service.

* Weights may vary based on valve options selected.

Building connections that last™