

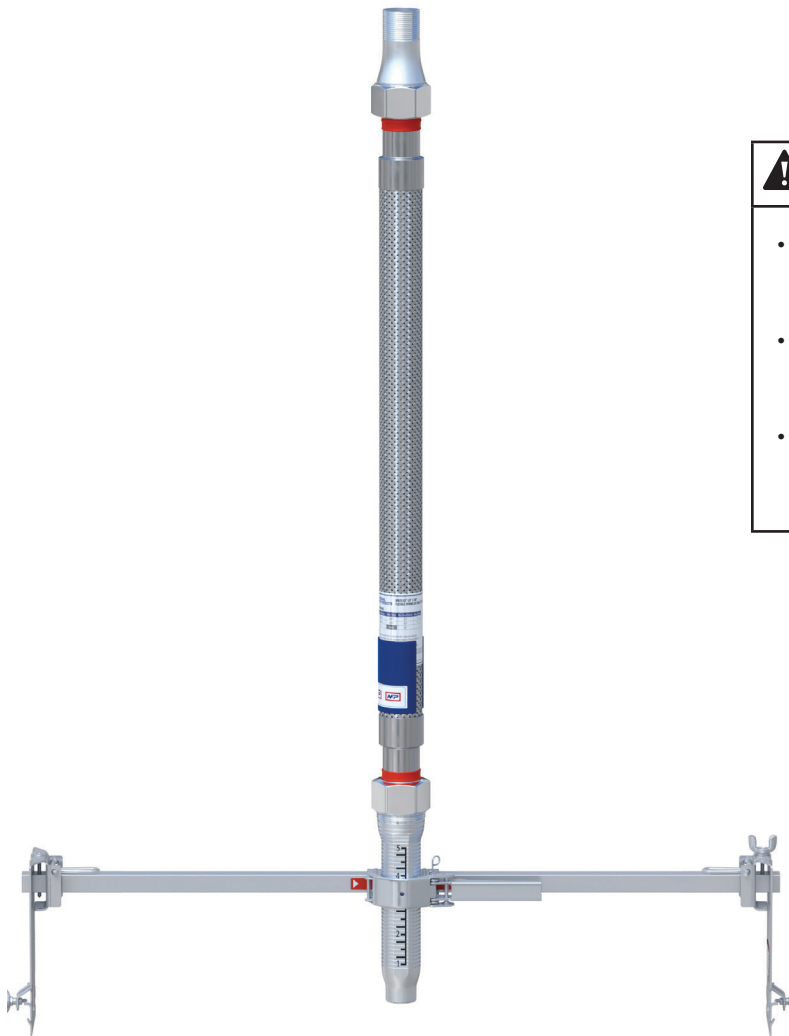
SPECFLEX™

BRACKET FOR SUSPENDED AND HARD LID CEILINGS



NFP2401XX Figure Number

INSTALLATION INSTRUCTIONS



⚠ WARNING

- You must read and understand all instructions and warnings before attempting to install any Specflex sprinkler drop system components.
- Failure to follow these instructions can lead to improper operation, resulting in serious injury, death or property damage.
- We recommend wearing safety glasses or goggles, a hard hat and shoes with foot protection during installation.

REQUIRED SYSTEM PARTS

Flexible Hose (Braided)
NFP2401 Pre-Assembled Bracket

REQUIRED TOOLS

Pipe Wrench, Screwdriver
PTFE Tape

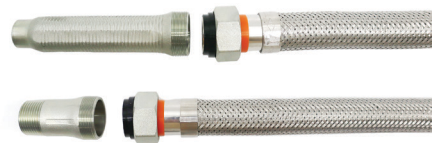
NFP2401XX Figure Number

INSTALLATION INSTRUCTIONS

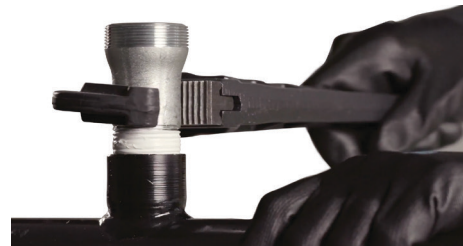
1. Inspect the Specflex sprinkler drop system components for any sign of physical damage. Make sure all components are included and in the proper order.



2. Disconnect the inlet nipple and outlet reducer from the flexible hose and check that each sealing gasket is in place properly. Reconnect outlet reducer to the flexible hose.



3. Ensure that both end threads are clean without any damage. Apply PTFE tape to the inlet nipple threads. Use a pipe wrench to connect the inlet nipple to the branch line.



4. Use a pipe wrench to connect the flexible hose to the inlet nipple. Torque range should be a minimum of 50 to a maximum of 58 ft-lbs.



**DO NOT USE PTFE TAPE ON THE INLET NIPPLE
THREAD TO CONNECT TO THE FLEXIBLE HOSE.**

NFP2401XX Figure Number

INSTALLATION INSTRUCTIONS

NFP2401 BRACKETS ON THE T-BAR GRIDS

5. Place the NFP2401 bracket at the desired position on the ceiling grids.

If distance between the T-bar grids is smaller or bigger than 24", loosen the wing bolt and latch on the adjustable end bracket and adjust the width.

6. Press the bracket down against the T-bar grid to position the leg of the bracket to be fully seated on the grid without any spacing.

7. Tighten the wing bolts to secure the end brackets onto the grid. The recommended torque is 1.40–1.48 ft-lbs (190-200cN • m).

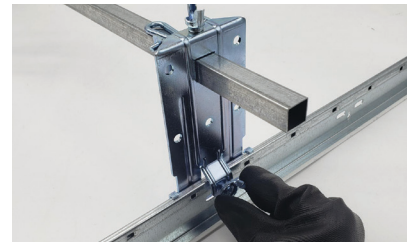
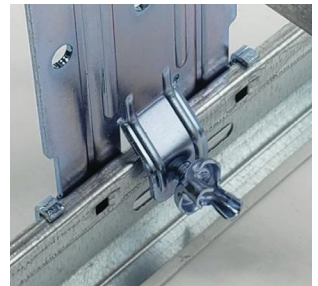
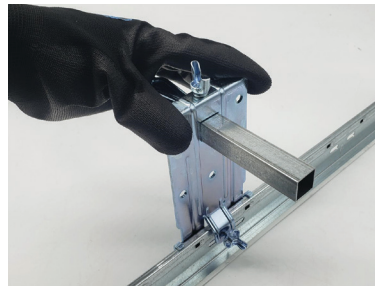
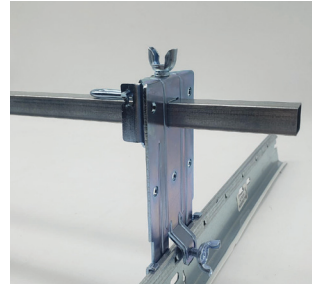


DO NOT OVERTIGHTEN THE WING BOLT WITH TOOLS. THIS MAY CAUSE DAMAGE TO THE WING BOLT.

8. Press the release pin and open the center bracket. Load the flex hose on the proper height position in accordance with the type of sprinkler head used.

Close the gate of the center bracket from left to right and firmly push the lever toward the stock bar until it clicks to secure the outlet reducer.

9. Verify the location marking on the outlet reducer and match the outlet location for the remaining head installations.

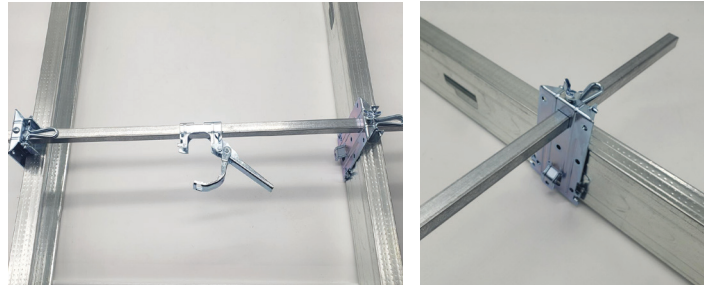


NFP2401XX Figure Number

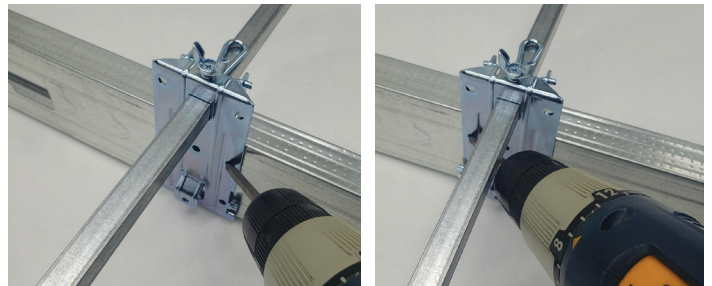
INSTALLATION INSTRUCTIONS

NFP2401 BRACKETS ON THE SIDE OF METAL OR WOOD STUDS

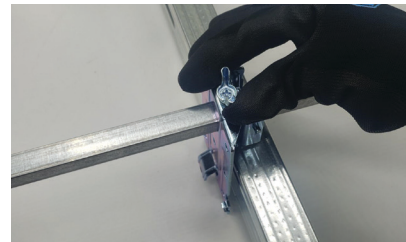
5. Loosely assemble the adjustable end bracket based on the distance between the metal studs. Place NFP2401 on the side of the metal studs.



6. Secure NFP2401 bracket on the metal studs using 4 metal screws on each end bracket and fully penetrate through the framing. The recommended torque is 1.40–1.48ft-lbs (190-200 cN • m).



7. Latch down the lever and tighten the top wing bolt on the adjustable end bracket to secure the end bracket onto the stock bar. The recommended torque is 1.40–1.48 ft-lbs (190-200cN • m)



8. Press the release pin and open the center bracket. Load the flex hose on the proper height position in accordance with the type of sprinkler head used.

Close the gate of the center bracket from left to right and firmly push the lever toward the stock bar until it clicks to secure the outlet reducer.



9. Verify the location marking on the outlet reducer and match the outlet location for the remaining head installations.

