

NFP240724 Figure Number

INSTALLATION INSTRUCTIONS



⚠ WARNING

- You must read and understand all instructions and warnings before attempting to install any Specflex® sprinkler drop system components.
- Failure to follow these instructions can lead to improper operation, resulting in serious injury, death or property damage.
- We recommend wearing safety glasses or goggles, a hard hat and shoes with foot protection during installation.

REQUIRED SYSTEM PARTS

- Flexible Hose (Braided)
- NFP240724 Pre-Assembled Bracket

REQUIRED TOOLS

- Pipe Wrench, Screwdriver
- PTFE Tape

SPECFLEX®

BRACKET FOR WOOD AND METAL STUDS



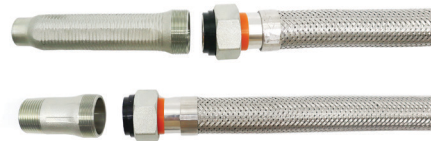
NFP240724 Figure Number

INSTALLATION INSTRUCTIONS

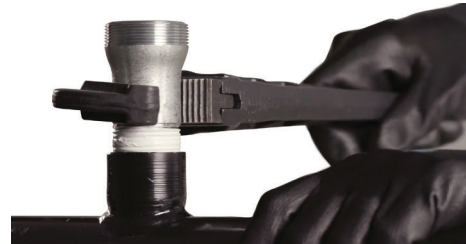
1. Inspect the Specflex® sprinkler drop system components for any sign of physical damage. Make sure all components are included and in the proper order.



2. Disconnect the inlet nipple and outlet reducer from the flexible hose and check that each sealing gasket is in place properly. Reconnect outlet reducer to the flexible hose.



3. Ensure that both end threads are clean without any damage. Apply PTFE tape to the inlet nipple threads. Use a pipe wrench to connect the inlet nipple to the branch line.



4. Use a pipe wrench to connect the flexible hose to the inlet nipple. Torque range should be a minimum of 50 to a maximum of 58 ft-lbs.



**DO NOT USE PTFE TAPE ON THE INLET NIPPLE
THREAD TO CONNECT TO THE FLEXIBLE HOSE.**

NFP240724 Figure Number

INSTALLATION INSTRUCTIONS

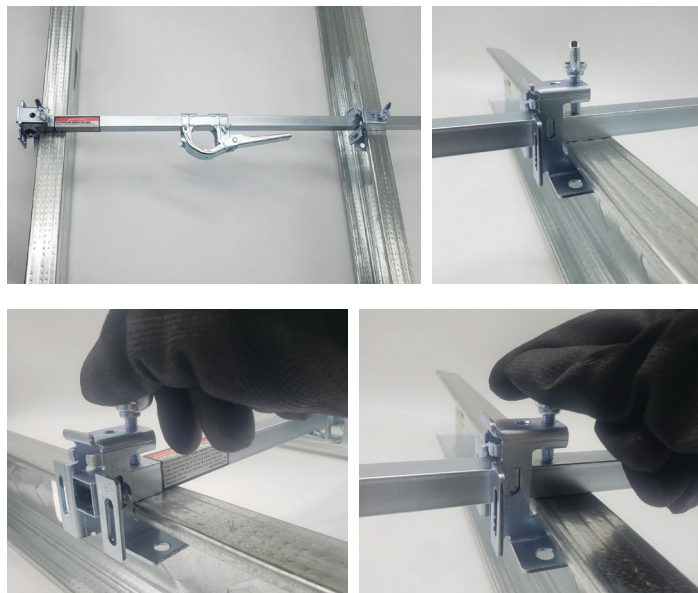
NFP240724 ON TOP OF METAL STUDS

5. Loosely assemble the adjustable end bracket based on the distance between the metal studs. Place NFP240724 on the metal studs.
6. Install NFP240724 onto the metal studs. Ensure that the slots on each NFP240724 end bracket are fully engaged with the metal studs.
7. Tighten the top wing bolts to secure the bracket. The recommended torque is 1.40–1.48 ft-lbs (190-200 cN • m).



**DO NOT OVERTIGHTEN THE WING BOLT WITH TOOLS.
THIS MAY CAUSE DAMAGE TO THE WING BOLT.**

Proceed to the final installation steps 8 and 9 on page 4.



INSTALLATION INSTRUCTIONS

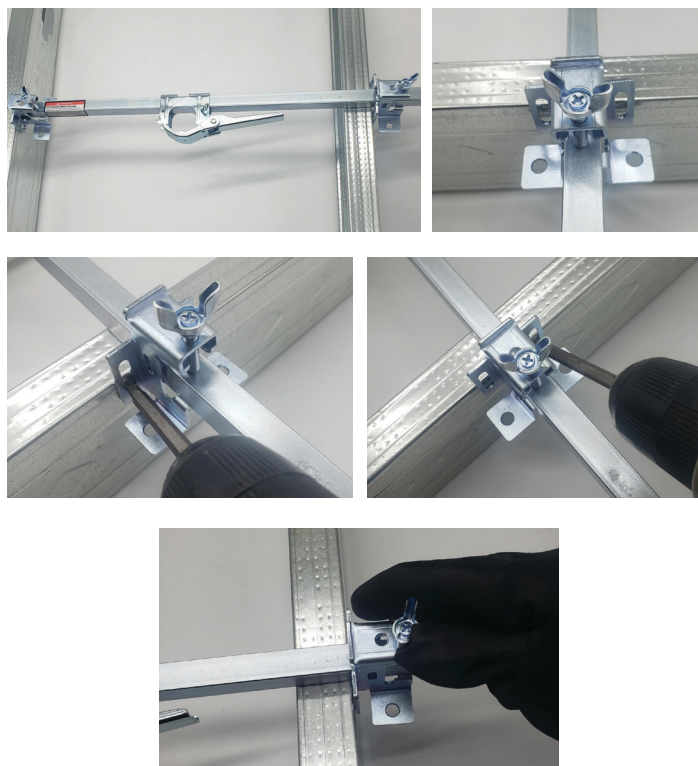
NFP240724 SIDE MOUNTED ON METAL STUDS

5. Loosely assemble the adjustable end bracket based on the distance between the studs. Place NFP240724 on the side of the studs.
6. Secure NFP240724 onto the studs using two screws on each end bracket. The recommended torque is 1.40–1.48 ft-lbs (190-200 cN • m).
7. Tighten the top wing bolt on both end brackets to secure the end brackets onto the stock bar. The recommended torque is 1.40–1.48 ft-lbs (190-200 cN • m).



**DO NOT OVERTIGHTEN THE WING BOLT WITH TOOLS.
THIS MAY CAUSE DAMAGE TO THE WING BOLT.**

Proceed to the final installation steps 8 and 9 on page 4.



NFP240724 Figure Number

INSTALLATION INSTRUCTIONS

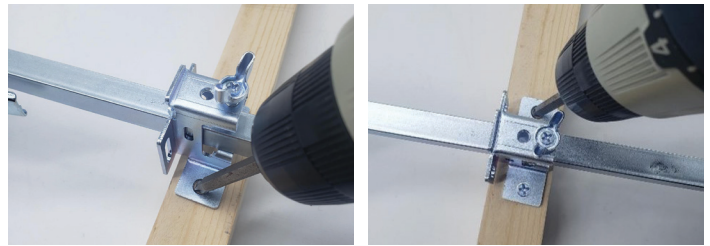
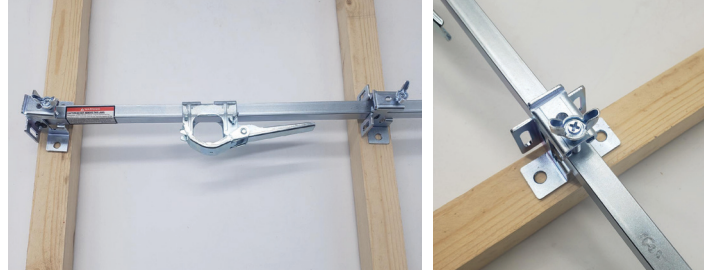
NFP240724 ON WOOD STUDS

- Loosely assemble the adjustable end bracket based on the distance between the studs. Place NFP240724 on the flat surface of the studs.
- Secure NFP240724 onto the studs using two screws on each end bracket. The recommended torque is 1.40–1.48 ft-lbs (190-200 cN • m).
- Tighten the top wing bolt on both end brackets to secure the end brackets onto the stock bar. The recommended torque is 1.40–1.48 ft-lbs (190-200 cN • m).



**DO NOT OVERTIGHTEN THE WING BOLT WITH TOOLS.
THIS MAY CAUSE DAMAGE TO THE WING BOLT.**

Proceed to the final installation steps 8 and 9 below.



INSTALLATION INSTRUCTIONS

FINAL STEPS FOR PREVIOUS 3 DIFFERENT INSTALLATIONS

- Press the release pin and open the center bracket. Load the flex hose on the proper height position in accordance with the type of sprinkler head being used.

Close the gate of the center bracket from left to right and firmly push the lever toward the stock bar until it clicks to secure the outlet reducer.

- Verify the location marking on the outlet reducer and match the outlet location for the remaining head installations.

