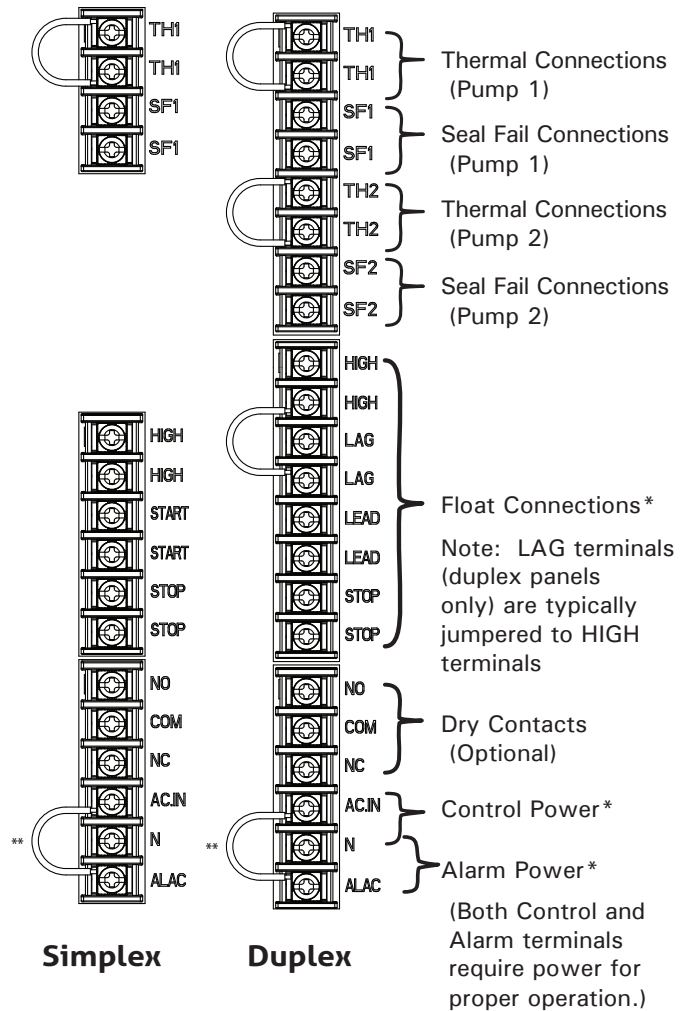


ZOELLER PUMP COMPANY Pivot® Pro Quick Reference Guide

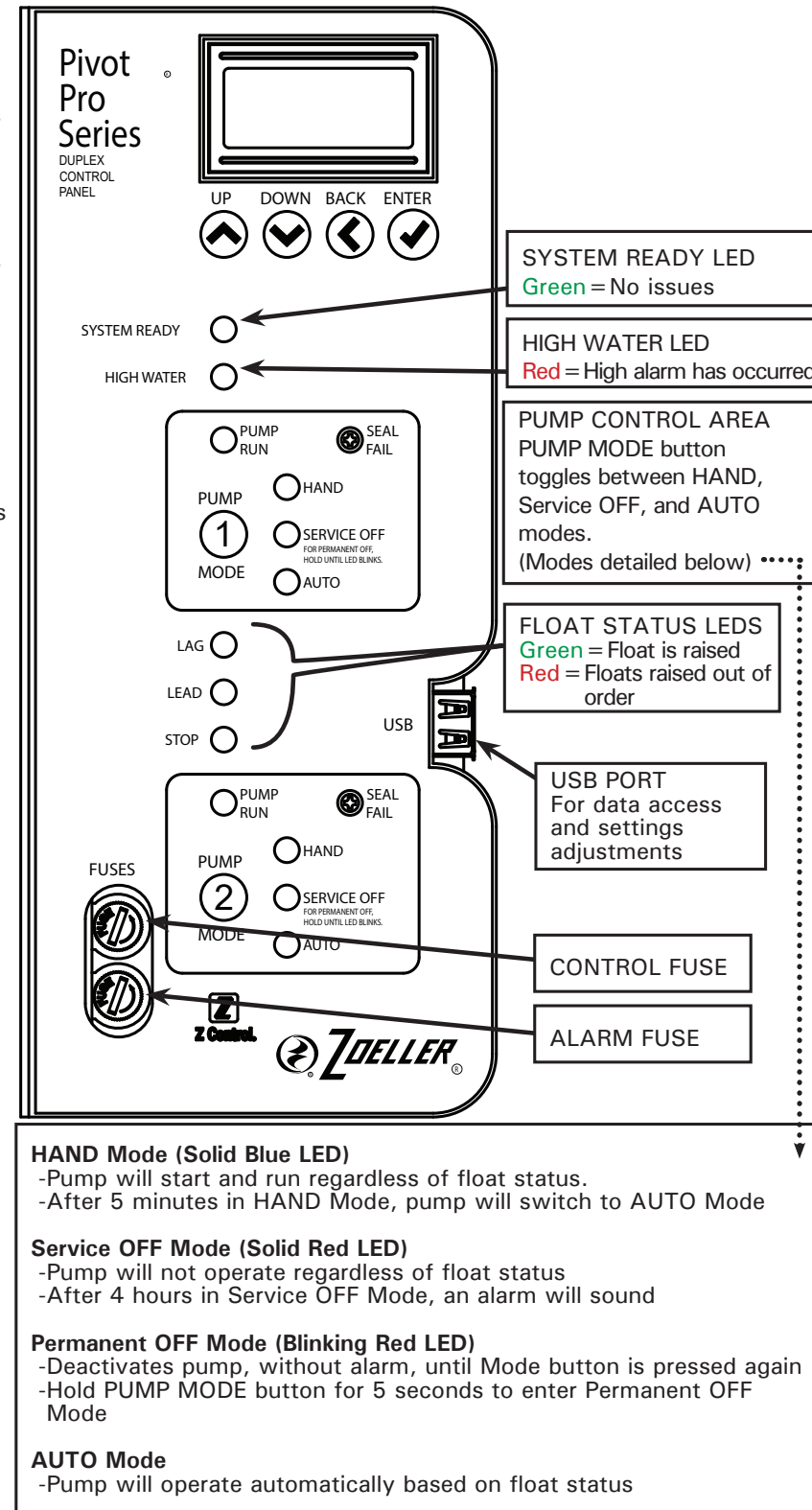
Before You Begin...

- This guide provides an overview of basic Pivot features - further explanation can be found in the manual
- Pivot®Pro uses intelligent logic to keep the system operational in the event of failures – certain behaviors may be unfamiliar at first
- Pivot®Pro is designed to use just 3 floats for most applications, regardless of simplex and duplex configurations

Essential Electrical Connections

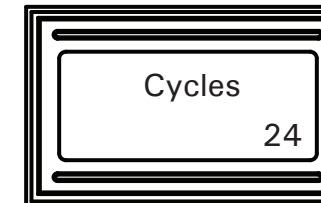


Basic Functions



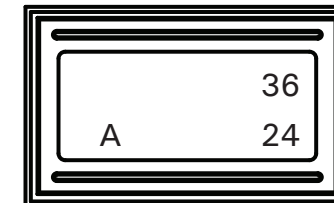
LCD Menu

Simplex Default Display



Displays cycle count

Duplex Default Display



Top right: Pump 1 cycle count
Bottom right: Pump 2 cycle count

'A' = Lead pump alternates based on Lead/Lag Ratio
'L' = Lead pump is set and will not alternate

Example: Pump 1 logged 36 cycles, Pump 2 logged 24 cycles. Pump 2 will start next, but lead pump will switch

NOTE: The Pivot Pro display must be unlocked before edits can be made. To unlock, press and hold the BACK and ENTER buttons simultaneously for about 1 second. Locking method can be changed in the 'Lock Set' menu item.

Other Menu Items

Alarms: Displays current alarms, if any

P1/P2 CC: Displays the cycle count(s)

P1/P2 ETM: Displays elapsed time meter(s)

Lead/Lag (Duplex Only): Sets the lead:lag alternating ratio or defines the lead pump

Simplex/Duplex/Alt: Sets the panel operating mode

Simplex: Only Pump 1 will operate

Duplex: Simultaneous pump operation on Lag float rise

Alt: Active pump will switch on Lag float rise

3 Floats / 4 Floats: Sets the number of floats the panel expects

OL Alrms: Activates alarm if physical overload trips (not all panels have overloads)

Seal Fail: Dictates whether or not the panel deactivates a pump if seal fail is detected

Cont Run: Alarm sounds if any pump run event exceeds timer (20-minute default)

HOA Set: Sets the timeout parameters for the HOA switch

5mH = 5-minute (default) limit in HAND Mode before panel reverts to AUTO mode

4hA = 4-hour (default) limit in Service OFF Mode before panel sounds an alarm

Thermals: Sets thermal circuit to read as normally open (NO) or normally closed (NC)

Horn Set: Sets behavior of audible alarm as Active or Latching

Globe: Sets behavior of globe as Solid, Blinking, or Alarm based

Logic: Sets panel's behavior to float input

Smart: Attempts to compensate for float issues

Relay: Responds to floats in conventional "relay-logic" fashion

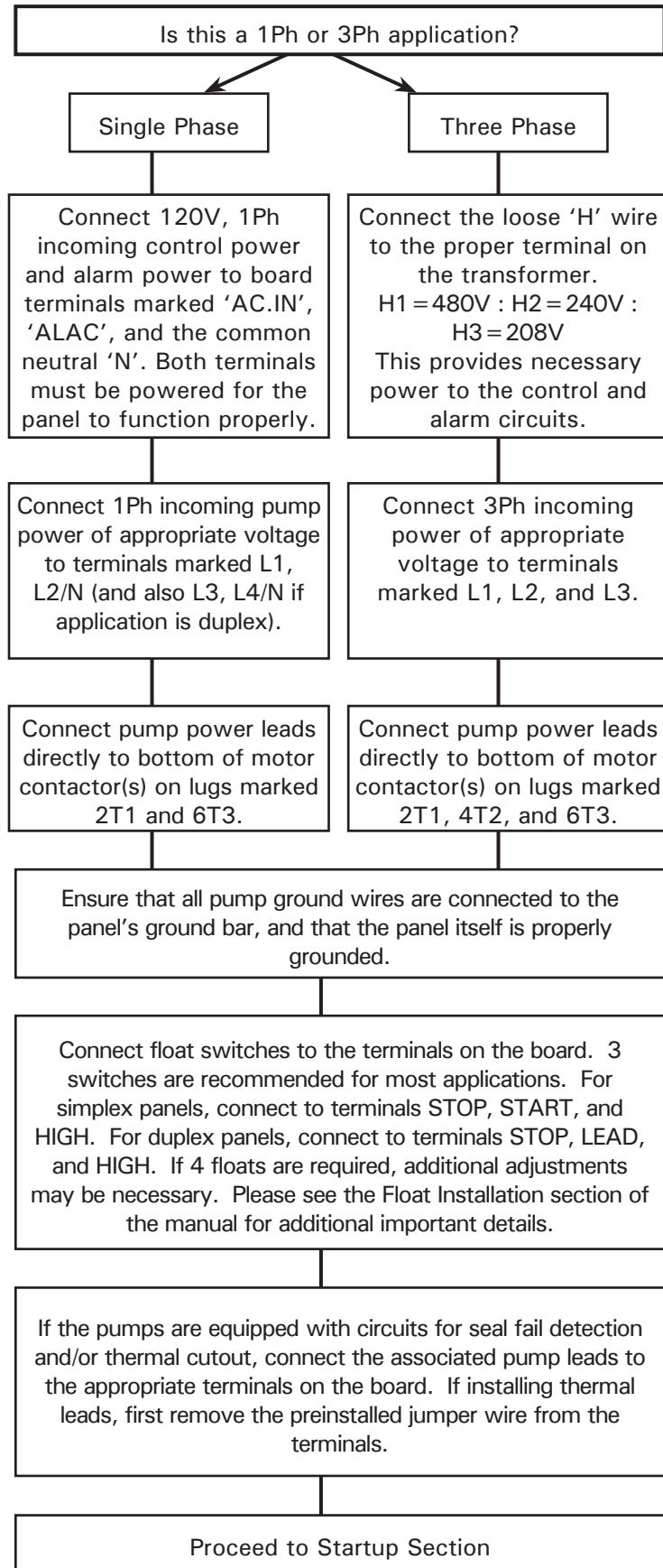
Lock Set: Display securable via 3 ways: 2-Button press (BACK+ENTER), PIN, or USB Key

* Denotes required connections

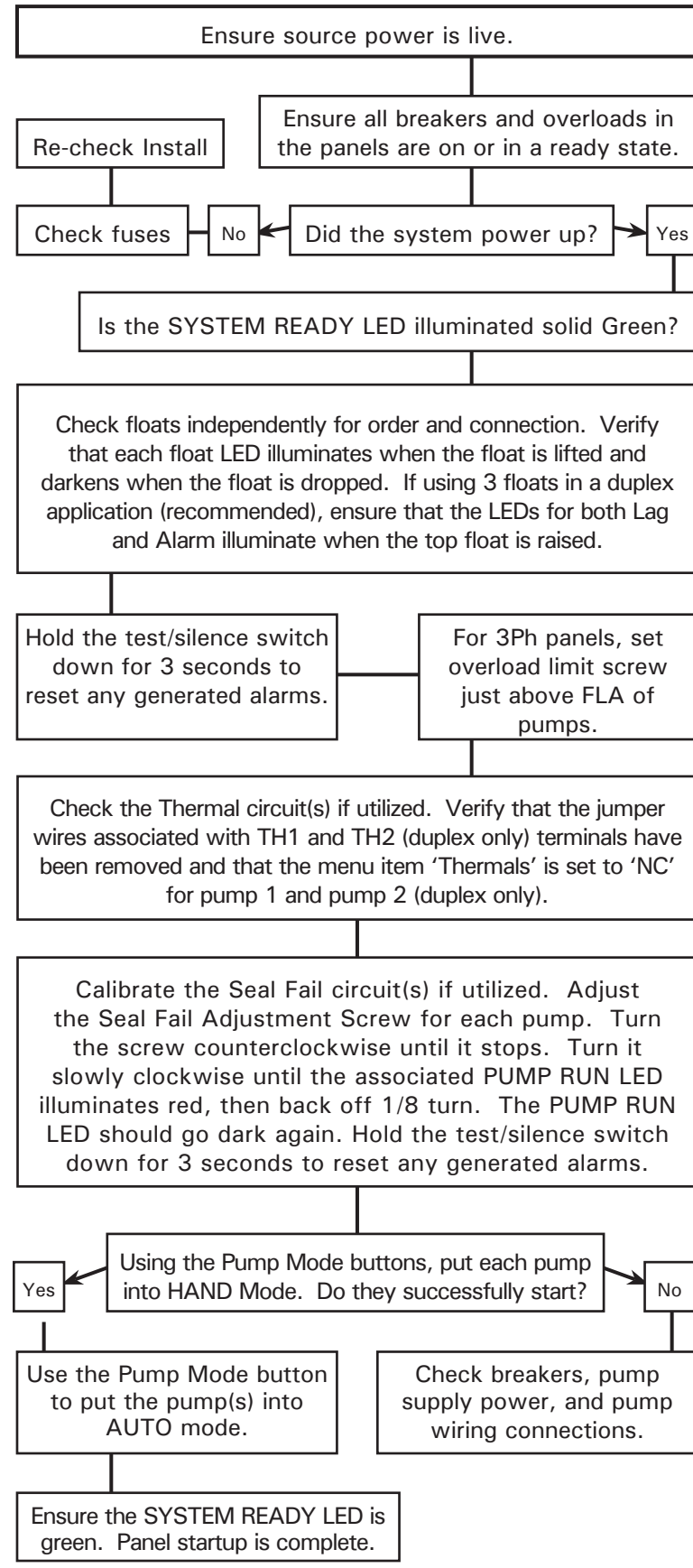


Installation, Startup, and Troubleshooting Flowchart

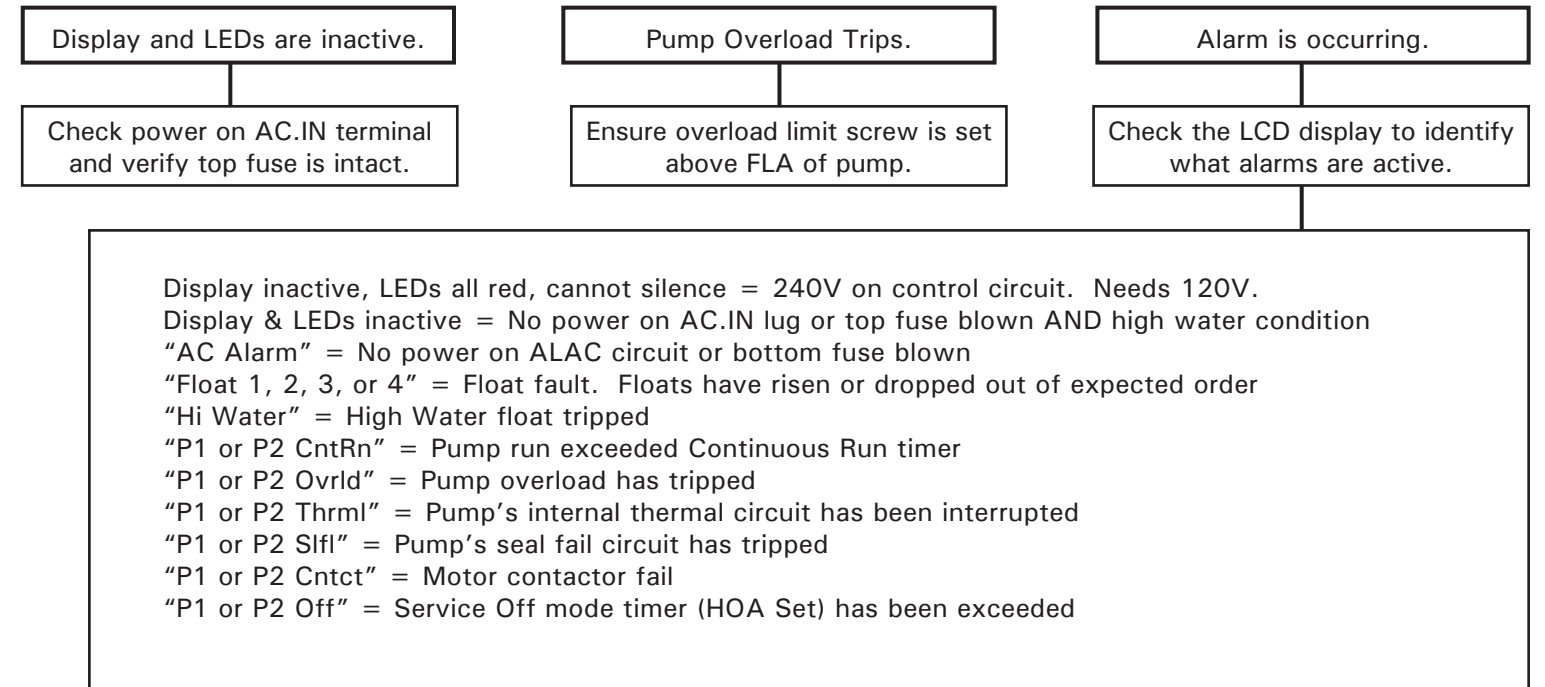
Install



Startup



Troubleshoot



Alarm Conditions

Alarm Condition	User Interface LEDs						
	Latching	Globe	System Ready	High Water	Pump Run (1 or 2)	Pump Off (1 or 2)	Stop, Start/Lead, or Lag
Overload (3PH only)	No	Fast Blink	Off	Off	Solid Red	Off	Off
Failed Contactor	Yes	Fast Blink	Off	Off	Solid Red	Off	Off
Service Off Timeout	No	Double Blink	Off	Off	Off	Blinking Red	Off
Disabled Alarm Circuit	No	Double Blink	Off	Solid Red	Off	Off	Solid Red
Continuous Run	Yes	Solid	Off	Off	Blinking Amber	Off	Off
High Water Float Logic Error	Yes	Slow Blink	Off	Blinking Red	Off	Off	Off
Float Logic Error	Yes	Slow Blink	Off	Off	Off	Off	Blinking Red
Float Questionable	Yes	Slow Blink	Off	Off	Off	Off	Blinking Amber
High Water	Yes	Solid	Off	Solid Red	Off	Off	Off
Seal Fail Alarm	Yes	Fast Blink	Off	Off	Blinking Red	Off	Off
Thermal Alarm	Yes	Fast Blink	Off	Off	Blinking Red	Off	Off
High Control Voltage	Yes	Off	Blinking Green	Blinking Red	Blinking Red	Blinking Red	Blinking Red

