

FRIGIDAIRE GALLERY

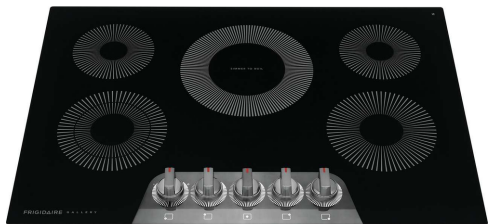
GCCE3070AD

30" Electric Cooktop

The Frigidaire Gallery 30" Electric Cooktop provides delicious results every time with the EvenTemp™ Element that delivers consistent heat across the element's surface, reducing hot and cold spots in your pan. Enjoy ultimate cooking flexibility with powerful elements designed to meet all of your cooking needs, including a Dual Expandable Element and Keep Warm Zone. Plus, these cooktops feature bright, backlit LED knobs that light up when the cooktop is in use, conveniently placed on the front of the cooktop.

Available Colors: Stainless Steel, Black Stainless Steel

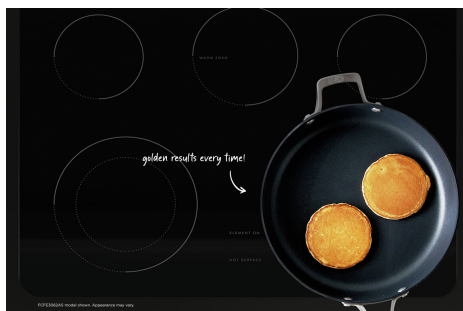
Version: 12/22



Consumer Benefits

Consistent Results with the Even Temp™ element

With our EvenTemp™ cooktop technology, heat is evenly distributed across the element's surface, which reduces hot spots and cold areas in your pan.



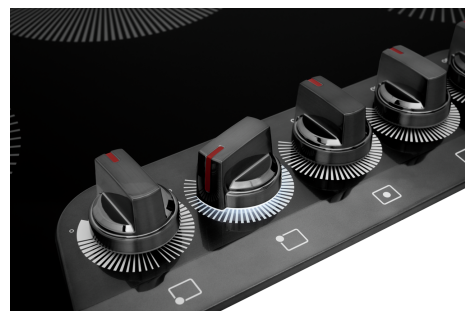
Flexible Five Element Cooktop

With five elements, this cooktop is designed to handle all of your cooking needs, including our powerful 3,200 Watt EvenTemp™ Element, a Dual Expandable Element, and convenient Keep Warm Zone.



Backlit LED Knobs

Backlit LED knobs light up when your element is in use.



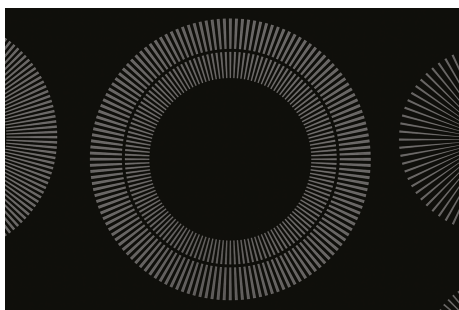
Peace of Mind with the Frigidaire® Fit Promise

We promise that your new 30" Frigidaire radiant cooktop will fit your existing countertop cutout of the same width and configuration, or we will reimburse you for cabinet modification costs up to \$100.

Via mail-in rebate. See <https://www.Frigidaire.com/FitPromise> for additional information.

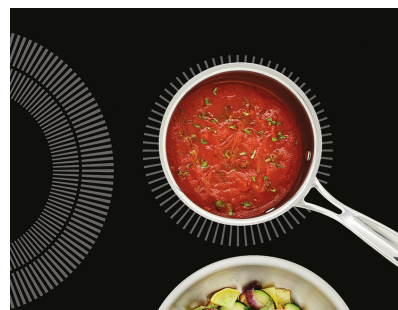
SpaceWise® Dual Expandable Element

Our convenient 2-in-1 element expands from 5" for smaller pots to 7" for larger cookware, providing more cooktop flexibility.



Cooktop Keep Warm Zone

Keep food warm until everything - and everyone - is ready.



FRIGIDAIRE
FIT PROMISE

Product Photography



Product Specifications

Product Information

Product Line	Electric Cooktop
Power Type	Electric 240v
Connected Appliance	No
UPC	012505566509

Cooktop Performance

Right Front Element Burner Size	7"
Right Rear Element Burner Size	6"
Left Front Element Burner Size (Small)	5"
Left Front Element Burner Size (Large)	7"
Left Rear Element Burner Size	6"
Center Rear Element Burner Size	9"
Right Front Element Burner	1,800 Watts
Right Rear Element Burner	1,200 Watts
Left Front Element Burner (Small)	750 Watts
Left Front Element Burner (Large)	1,800 Watts
Left Rear Element Burner	1,200 Watts
Center Rear Element Burner	3,200 Watts

Display

Control Location	Front
Display Type	Mechanical

Electrical Specifications

Amps @ 240 Volts	38.3 Amps
Connected Load @ 240V	9.2 kW
Minimum Circuit Required	40 Amps
Voltage Rating	240 V

General Specifications

Frigidaire Fit Promise	Yes
Product Weight	31 lbs
Prop 65 Label	Yes
Warranty - Labor	1 Year
Warranty - Parts	1 Year

Safety Certifications and Approvals

CSA Listed	Yes
UL Listed	Yes

Cooktop

Cooking Surface Type	Smooth
Hot-Surface Indicator Light	Yes

Controls

Sabbath Mode	No
--------------	----

Dimensions and Volume

Height	2 5/8"
Width	30 5/8"
Depth	21 3/8"
Cutout Height	5"
Minimum Cutout Width	28 1/2"
Minimum Cutout Depth	19 5/8"
Maximum Cutout Width	29 7/8"
Maximum Cutout Depth	20 1/2"

Installation

Installed Over a Wall Oven	Yes
Power Supply Connection Location	Right Center

Certifications and Approvals

ADA Compliant	Yes
---------------	-----

Consumables, Accessories and Installation Parts

Consumables

10FFMICF01
ReadyClean™
Microfiber Cleaning
Cloths



10FFSCRB01
ReadyClean™
Scrubbing Pads



5304508690
ReadyClean™ Glass and
Ceramic Cooktop
Cleaner



10FFCTCL02
ReadyClean™ Glass and
Ceramic Cooktop
Cleaner - 2 Pack



10FFCTKT01
ReadyClean™ Cooktop
Cleaning Kit

