

Inverter Driven Heat Pump

30,000 BTU Single Zone Mid Static Duct System

Job Name \_\_\_\_\_  
 Location \_\_\_\_\_  
 Engineer \_\_\_\_\_  
 Submitted To \_\_\_\_\_  
 Submitted By \_\_\_\_\_  
 Reference \_\_\_\_\_

Date \_\_\_\_\_  
 Approval \_\_\_\_\_  
 Construction \_\_\_\_\_  
 Unit No \_\_\_\_\_  
 Drawing No \_\_\_\_\_

**PRODUCT FEATURES**

- Up To 0.8" WC
- Quiet Operation (as low as 29 db)
- Automatic Static Pressure Detection
- Heating Operation Rated Down to -5 °F
- Built-in Drain Pump
- Lineset Length up to 164ft
- Controls Sold Separately



MODEL NUMBERS			
Indoor Unit	ARUH30LUAS		
Outdoor Unit	AOUH30LUAS1		
System	30LUAS1R		
EFFICIENCIES			
SEER	--		
SEER 2	18.5		
EER	--		
EER 2	10.4		
HSPF	--		
HSPF 2 (IV) / HSPF 2 (V)	10/8.1		
COP	kW/kW	--	
COP	Btu/hW	--	
COP2	kW/kW	3.74	
COP2	Btu/hW	12.8	
OUTDOOR TEMPERATURE OPERATION RANGE			
Cooling	-5 to 115 (-21 to 46)		
Heating	*F(°C)	-5 to 75 (-21 to 24)	
CAPACITIES			
Cooling	Rated	Btu/h	30000
	Min.–Max.		9,600–35,000
Heating	Rated	Btu/h	32000
	Min.–Max.		9,200–38,000
LINESET REQUIREMENTS			
Connection Method	Flare		
Liquid	in (mm)	Ø3/8 (Ø9.52)	
Gas	in (mm)	Ø5/8 (Ø15.88)	
Pre-charge length	ft (m)	66 (20)	
Minimum Length		16 (5)	
Max. length		164 (50)	
Max. height difference		98 (30)	
INDOOR DIMENSIONS & WEIGHT			
Net (H x W x D)	in (mm)	11-13/16 x 39-3/8 x 27-9/16 (300 x 1,000 x 700)	
Gross (H x W x D)	in (mm)	15-3/4 x 48-3/4 x 34-7/16 (400 x 1,238 x 875)	
Net Weight	lb (kg)	93 (42)	
Gross Weight	lb (kg)	110 (50)	
OUTDOOR DIMENSIONS & WEIGHT			
Net (H x W x D)	in (mm)	39-5/16 x 37 x 12-5/8 (998 x 940 x 320)	
Gross (H x W x D)	in (mm)	46-5/16 x 40-7/16 x 17-1/2 (1,176 x 1,027 x 445)	
Net Weight	lb (kg)	139 (63)	
Gross Weight	lb (kg)	159 (72)	

**Warranty Information**



7 Year Compressor, 5 Year Parts out-of-the-box Warranty



10 Year Compressor, 10 Year Parts Warranty when registered within 60 days of installation in a residence



12 Year Compressor, 12 Year Parts Warranty when registered within 60 days of installation in a residence, and installed by a Fujitsu Elite contractor

**ACCESSORIES**

UTY-RNRUZ- Series	Wired Remote Controller
UTY-RSRY	Simple Remote Controller
UTY-RHRY	Simple Remote Controller
UTY-LBTUM	IR Receiver Kit with Wireless Remote Controller
UTY-XSZXZ1	Remote Sensor Unit
UTD-LFNB	Long-life Filter
UTY-XWZXZG	External Connect Kit
UTY-XCSX	External Input and Output PCB
UTZ-GXNA	External Input and Output PCB Bracket
UTY-TFSXJ4	WLAN Adapter
UTY-VM SX	Modbus Converter
UTY-VK SX	KNX Converter
UTY-TTRXZ1	Thermostat Converter
UTY-VTGX	Network Converter
UTY-VTGXV	Network Converter (AC power supply)
UTY-TERX	External Switch Controller

Due to continuous product improvements, specifications are subject to change without notice. Please log in to the Fujitsu Portal for the most up-to-date documentation <https://connect.fujitsugeneral.com>

Effective Date: 5/2/2023

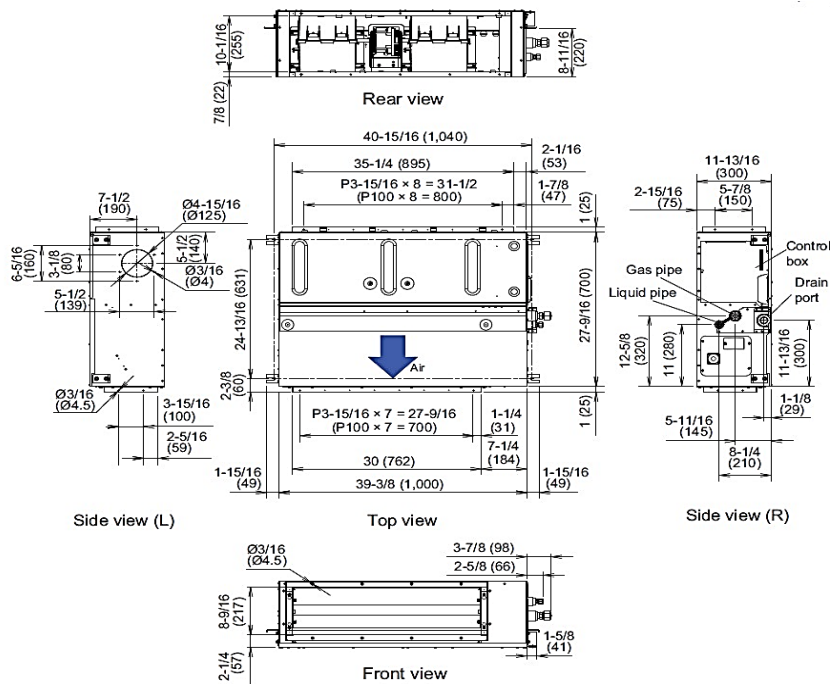
FAN DATA			
Indoor Unit Airflow rate	Cooling	HIGH	1,001 (1,700)
		MED	800 (1,360)
		LOW	700 (1,190)
		QUIET	630 (1,070)
	Heating	HIGH	1,001 (1,700)
		MED	800 (1,360)
		LOW	700 (1,190)
		QUIET	630 (1,070)
Outdoor Unit Airflow rate	Cooling		2,301 (3,910)
	Heating		2,219 (3,770)
SOUND PRESSURE			
Indoor Unit	Cooling	HIGH	38
		MED	34
		LOW	30
		QUIET	29
	Heating	HIGH	38
		MED	34
		LOW	30
		QUIET	29
Outdoor Unit	Cooling		53
	Heating		55
REFRIGERANT			
Type			R410A
Charge	lb oz		5 lb 8 oz
	g		2500
Oil Type			POE (RB68)

ELECTRICAL SPECIFICATIONS			
Voltage/Frequency		208/230 V~ 60 Hz	
Available Voltage Range		187~253 V	
Current	Cooling	Rated	12.8
	Heating	Rated	11.1
Maximum Operating Current	Cooling		18.3
	Heating		18.3
Starting current			13.4
MCA			22.2
Maximum Circuit Breaker			25
Input Power	Cooling	Rated	2.88
		Min.-Max.	0.46~3.67
	Heating	Min.-Max.	0.68~3.81
Power Factor	Cooling		97.8
	Heating		98.3
OTHER			
Moisture Removal		pints/h (L/h)	6.3 (3.0)
Energy Star			No
Drain hose	Material		PVC
	Tip diameter	in (mm)	Ø1/2 (Ø13.0) (I.D.) Ø5/8 to Ø11/16 (Ø16.0 to Ø16.7)
Operation Range	Cooling	°F (°C)	64 to 90 (18 to 32)
	Heating	%RH	80 or less
Static Pressure Range		inWG (Pa)	0.12 to 0.80 (30 to 200)

DIMENSIONS:

Indoor Unit

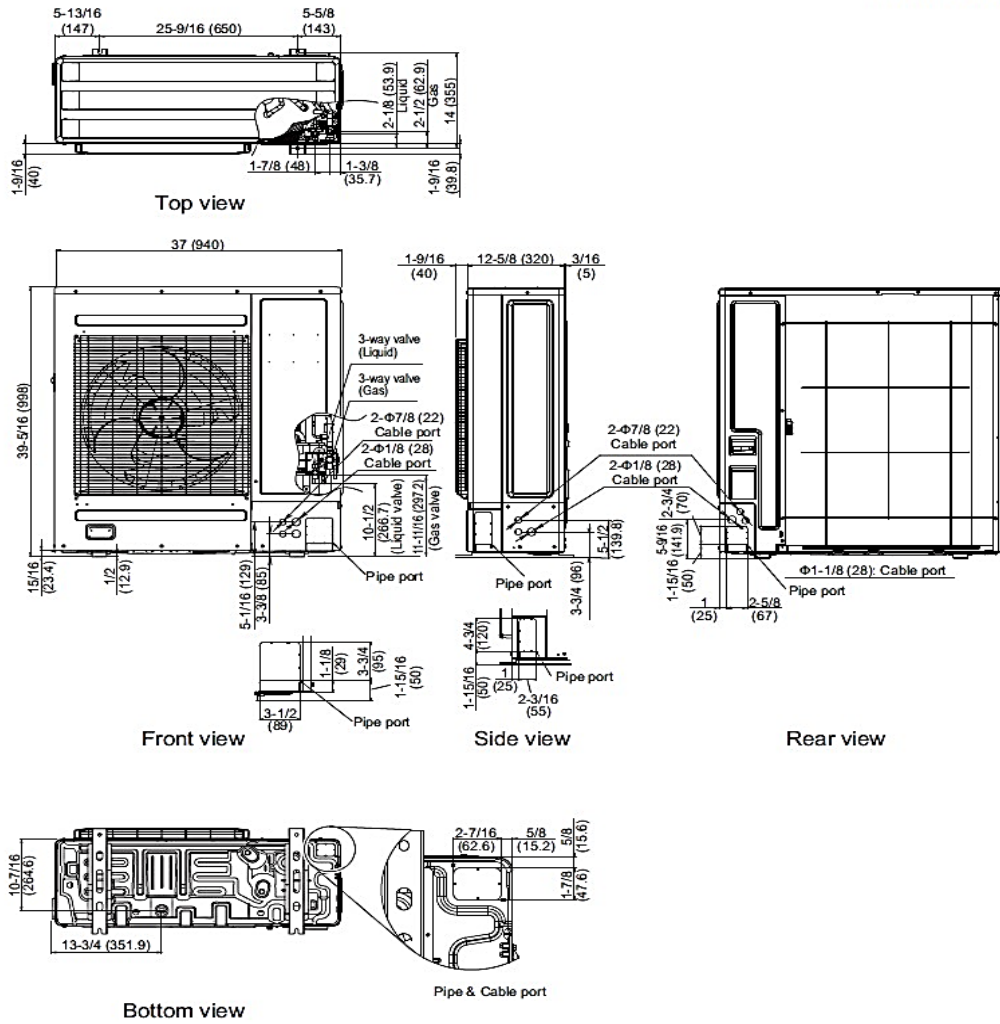
Units: In. (mm)



DIMENSIONS

Units: In. (mm)

Outdoor Unit



The Fujitsu logo is a worldwide trademark of Fujitsu General Limited. The Airstage logo and name is a worldwide trademark of Fujitsu General Limited and is a registered trademark in Japan, the USA and other countries or areas. Copyright 2022 Fujitsu General America, Inc. Fujitsu's products are subject to continuous improvements. Fujitsu reserves the right to modify product design, specifications and information in this brochure without notice and without incurring any obligations.

Note: Specifications are based on the following conditions:  
 Cooling: Indoor temperature of 80°F (26.7°C) DB/67°F (19.4°C) WB, and outdoor temperature of 95°F (35°C) DB/75°F (23.9°C) WB. Heating: Indoor temperature of 70°F (21.1°C) DB/60°F (15.6°C) WB, and outdoor temperature of 47°F (8.3°C) DB/43°F (6.1°C) WB. Pipe length: 25ft. (7.5m), Height difference: 0ft. (0m) (Outdoor unit – indoor unit).