

Inverter Driven Heat Pump

36,000 BTU Single Zone Mid Static Duct System

Job Name _____
 Location _____
 Engineer _____
 Submitted To _____
 Submitted By _____
 Reference _____

Date _____
 Approval _____
 Construction _____
 Unit No _____
 Drawing No _____

PRODUCT FEATURES

- Up To 0.8" WC
- Quiet Operation (as low as 26 db)
- Automatic Static Pressure Detection
- Heating Operation Rated Down to -5 °F
- Built-in Drain Pump
- Lineset Length up to 164ft
- Controls Sold Separately



MODEL NUMBERS

Indoor Unit	ARUH36LUAS
Outdoor Unit	AOUH36LUAS1
System	36LUAS1R

EFFICIENCIES

SEER	--	
SEER 2	18	
EER	--	
EER 2	9.6	
HSPF	--	
HSPF 2 (IV) / HSPF 2 (V)	9.8/7.9	
COP	kw/kw	--
COP	Btu/hW	--
COP2	kw/kw	3.44
COP2	Btu/hW	11.7

OUTDOOR TEMPERATURE OPERATION RANGE

Cooling	*F(°C)	-5 to 115 (-21 to 46)
Heating		-5 to 75 (-21 to 24)

CAPACITIES

Cooling	Rated	Btu/h	36000
	Min.–Max.		9,600–39,000
Heating	Rated		38000
	Min.–Max.		9,200–43,000

LINESET REQUIREMENTS

Connection Method	Flare	
Liquid	in (mm)	Ø3/8 (Ø9.52)
Gas		Ø5/8 (Ø15.88)
Pre-charge length		66 (20)
Minimum Length	ft (m)	16 (5)
Max. length		164 (50)
Max. height difference		98 (30)

INDOOR DIMENSIONS & WEIGHT

Net (H x W x D)	in (mm)	11-13/16 x 55-1/8 x 27-9/16 (300 x 1,400 x 700)
Gross (H x W x D)		15-3/4 x 64-1/2 x 34-7/16 (400 x 1,638 x 875)
Net Weight	lb (kg)	121 (55)
Gross Weight		141 (64)

OUTDOOR DIMENSIONS & WEIGHT

Net (H x W x D)	in (mm)	39-5/16 x 37 x 12-5/8 (998 x 940 x 320)
Gross (H x W x D)		46-5/16 x 40-7/16 x 17-1/2 (1,176 x 1,027 x 445)
Net Weight	lb (kg)	139 (63)
Gross Weight		159 (72)

Warranty Information



7 Year Compressor, 5 Year Parts out-of-the-box Warranty



10 Year Compressor, 10 Year Parts Warranty when registered within 60 days of installation in a residence



12 Year Compressor, 12 Year Parts Warranty when registered within 60 days of installation in a residence, and installed by a Fujitsu Elite contractor

ACCESSORIES

UTY-RNRUZ- Series	Wired Remote Controller
UTY-RSRY	Simple Remote Controller
UTY-RHRY	Simple Remote Controller
UTY-LBTUM	IR Receiver Kit with Wireless Remote Controller
UTY-XSZXZ1	Remote Sensor Unit
UTD-LFNA	Long-life Filter
UTY-XWZXZG	External Connect Kit
UTY-XCSX	External Input and Output PCB
UTZ-GXNA	External Input and Output PCB Bracket
UTY-TFSXJ4	WLAN Adapter
UTY-VM SX	Modbus Converter
UTY-VK SX	KNX Converter
UTY-TTRXZ1	Thermostat Converter
UTY-VTGX	Network Converter
UTY-VTGXV	Network Converter (AC power supply)
UTY-TERX	External Switch Controller

Due to continuous product improvements, specifications are subject to change without notice. Please log in to the Fujitsu Portal for the most up-to-date documentation <https://connect.fujitsugeneral.com>

Effective Date: 5/2/2023

FAN DATA			
Indoor Unit Airflow rate	Cooling	HIGH	1,207 (2,050)
		MED	965 (1,640)
		LOW	783 (1,330)
		QUIET	630 (1,070)
	Heating	HIGH	1,089 (1,850)
		MED	965 (1,640)
		LOW	783 (1,330)
		QUIET	630 (1,070)
Outdoor Unit Airflow rate	Cooling	2,502 (4,250)	
	Heating	2,431 (4,130)	
SOUND PRESSURE			
Indoor Unit	Cooling	HIGH	37
		MED	33
		LOW	30
		QUIET	26
	Heating	HIGH	35
		MED	33
		LOW	30
		QUIET	26
Outdoor Unit	Cooling	54	
	Heating	56	
REFRIGERANT			
Type			R410A
Charge	lb oz	5 lb 8 oz	
	g	2500	
Oil Type			POE (RB68)

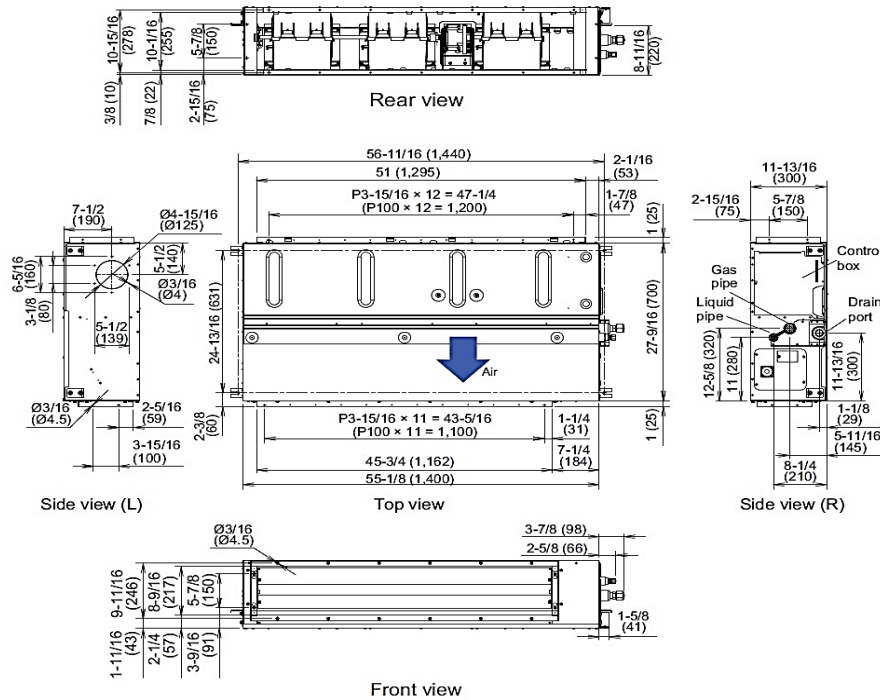
ELECTRICAL SPECIFICATIONS			
Voltage/Frequency		208/230 V~ 60 Hz	
Available Voltage Range		187-253 V	
Current	Cooling	Rated	16.5
	Heating	Rated	14.2
Maximum Operating Current	Cooling	A	19.8
	Heating		19.8
Starting current		16.5	
MCA		22.2	
Maximum Circuit Breaker		25	
Input Power	Cooling	Rated	kW
		Min.-Max.	
	Heating	Rated	
Power Factor	Cooling	%	
	Heating	99.2	
Moisture Removal		pints/h (L/h)	7.6 (3.6)
Energy Star		No	
Drain hose	Material	PVC	
	Tip diameter	in (mm)	Ø1/2 (Ø13.0) (I.D.) Ø5/8 to Ø11/16 (Ø16.0 to Ø16.7)
Operation Range	Cooling	°F (°C)	64 to 90 (18 to 32)
	Heating	%RH	80 or less
Static Pressure Range	Cooling	°F (°C)	60 to 86 (16 to 30)
	Heating	inWG (Pa)	0.12 to 0.80 (30 to 200)

OTHER			
Moisture Removal		pints/h (L/h)	7.6 (3.6)
Energy Star		No	
Drain hose	Material	PVC	
	Tip diameter	in (mm)	Ø1/2 (Ø13.0) (I.D.) Ø5/8 to Ø11/16 (Ø16.0 to Ø16.7)
Operation Range	Cooling	°F (°C)	64 to 90 (18 to 32)
	Heating	%RH	80 or less
Static Pressure Range	Cooling	°F (°C)	60 to 86 (16 to 30)
	Heating	inWG (Pa)	0.12 to 0.80 (30 to 200)

DIMENSIONS:

Indoor Unit

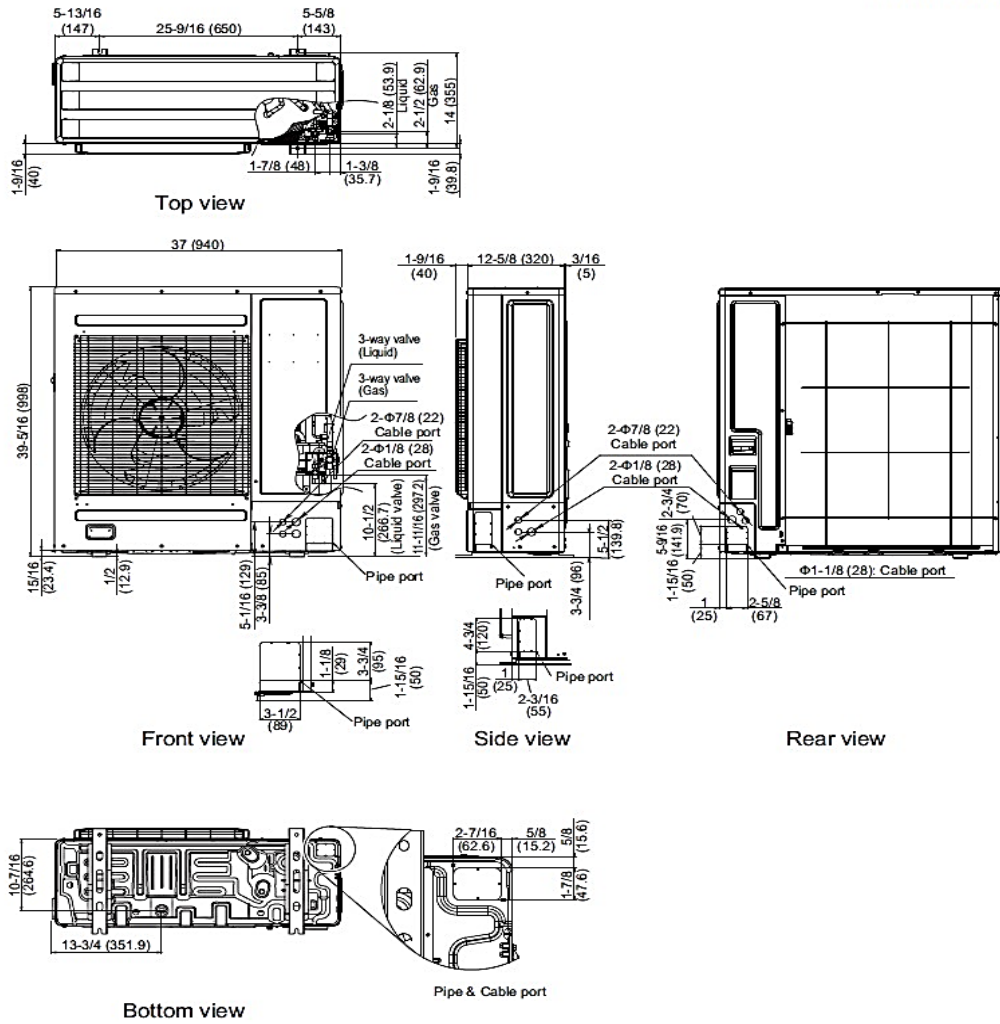
Units: In. (mm)



DIMENSIONS

Units: In. (mm)

Outdoor Unit



The Fujitsu logo is a worldwide trademark of Fujitsu General Limited. The Airstage logo and name is a worldwide trademark of Fujitsu General Limited and is a registered trademark in Japan, the USA and other countries or areas. Copyright 2022 Fujitsu General America, Inc. Fujitsu's products are subject to continuous improvements. Fujitsu reserves the right to modify product design, specifications and information in this brochure without notice and without incurring any obligations.

Note: Specifications are based on the following conditions:
 Cooling: Indoor temperature of 80°F (26.7°C) DB/67°F (19.4°C) WB, and outdoor temperature of 95°F (35°C) DB/75°F (23.9°C) WB. Heating: Indoor temperature of 70°F (21.1°C) DB/60°F (15.6°C) WB, and outdoor temperature of 47°F (8.3°C) DB/43°F (6.1°C) WB. Pipe length: 25ft. (7.5m), Height difference: 0ft. (0m) (Outdoor unit – indoor unit).