

M-200TS

Thermostatically Controlled Mixing Hose Station

The model **M-200TS** features rugged construction and superb quality for superior thermostatic control. The unit's accurate, solid, liquid-filled thermostat allows you to set the exact output of water temperature desired from cold to 160°F. Featuring durable bronze body construction with replaceable corrosion-resistant components, the **M-200TS** valve maximizes cleaning effectiveness for any application.

M-200TS is standard available in bronze, but a chrome plated version is also available. Two versions in 1/2" low flow and 3/4" high flow.

1/2" Low Flow Unit - 5-7 GPM

3/4" High Flow Unit - 10-12 GPM

MIXING UNIT FEATURES

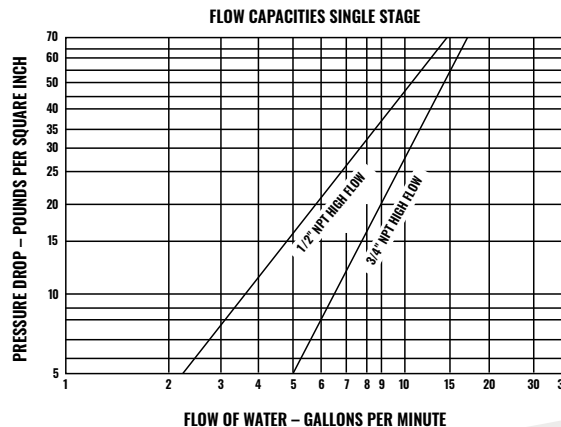
The standard unit is constructed of bronze and stainless steel. A bronze/chrome-plated unit is also available upon request. The Piston Assembly (the only moving part of the valve) consists of the piston, liner, and springs, which are all constructed of stainless steel for friction-free durability. All assembly units, including the piston and liner, are easily removed for cleaning and inspection. Other noteworthy features include:

- Precise temperature control from 80°F (27°C) to 160°F (71°C)
- Maximum water temperature 160°F (71°C)
- Adjustable temperature limit stop for maximum safety; Complete anti-scald and chill protection
- Senses and compensates for temperature or pressure fluctuations (up to a 50% drop in inlet supply pressure)
- Maintains temperature to $\pm 3^\circ\text{F}$
- Color-coded temperature dial maximum working pressure to 125 psi (water supply pressures must be within a 20 psi differential)
- Replaceable components facilitate servicing
- Inlet piping: $\frac{3}{4}$ " ball valves on 6" centers

THERMOSTAT FEATURES

The Thermostatic Actuator is linear in its expansion and exerts the highest possible operating force directly on the valve piston. It is susceptible to the slightest variation in temperature or pressure of the supply lines. It is highly resistant to corrosion for long, dependable life. Other noteworthy features include:

- Senses slight pressure fluctuations
- It is a hydraulically formed, liquid-filled bellows
- It is linear in its expansion and exerts the highest possible operating force directly on the valve piston
- Must have a minimum of 15°F differential between hot and cold inlet and outlet set temperature



Maximum water temperature:
160°F (71°C)

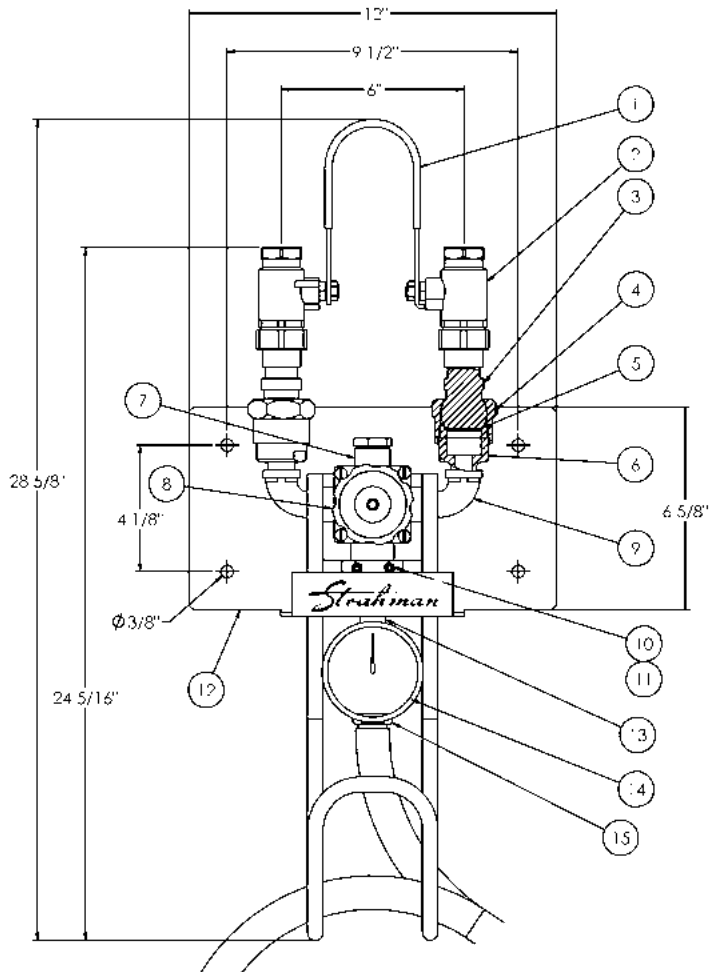
Maximum working pressure:
125 psi

Minimum working pressure:
10 psi hot/10 psi cold (balanced pressure)



M-200TS

Thermostatically Controlled Mixing Hose Station



PARTS				
PART NO.	PRODUCT CODE	DESCRIPTION	MATERIAL	QTY
1	BVHANDUNI	UNILEVER	SST	1
2	BV0075BBLUE	BALL VALVE	SST	2
3	BCBRG	BALL CHECK VALVE	CHROME-PLATED BRASS W/ SST INTERIOR	2
4	BCNUTBR	BALL CHECK UNION NUT	CHROME-PLATED BRASS	2
5	BCGAC	BALL CHECK GASKET	COPPER PTFE	2
6	M200BCADAPB	BALL CHECK VALVE ADAPTER	CHROME-PLATED BRASS	2
7	M200CV0050BR	THERMO CONTROL VALVE	CHROME-PLATED BRONZE W/ SST INTERIOR	1
8	M200KNOBASSY	CONTROL KNOB ASSEMBLY	NYLON	1
9	ELBW0050MFB	STREET ELBOW	SST	2
10	UBN1032	U-BOLT	SST	1
11	LNUT1032SERMC	#10 NUT	SST	2
12	M200WPL	MOUNTING PLATE	SST	1
13	NIPP0050S400350BN	NIPPLE	CHROME-PLATED BRASS OR SST	1
14	DMTG	TEMPERATURE GAUGE	SST	1
15	TEE0050B	TEE	CHROME-PLATED BRASS OR SST	1

Published 11.01.22

StrahmanGroup.com



PRECISION AND PERFORMANCE

WORLD HEADQUARTERS
2801 Baglyos Circle, Bethlehem, PA 18020
p: +1 877 787 2462 | +1 484 893 5080
e: strahman@strahman.com

USA | FRANCE | GERMANY | HONG KONG | CHINA