

SPECIFICATIONS

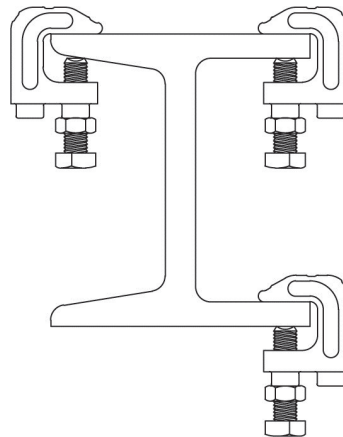
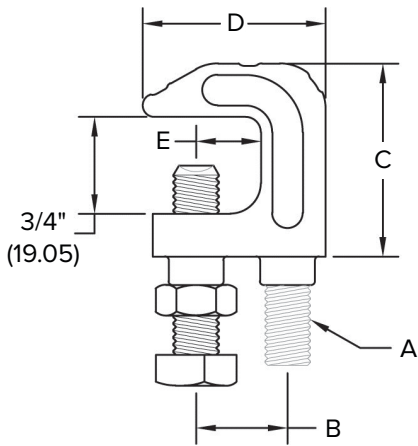
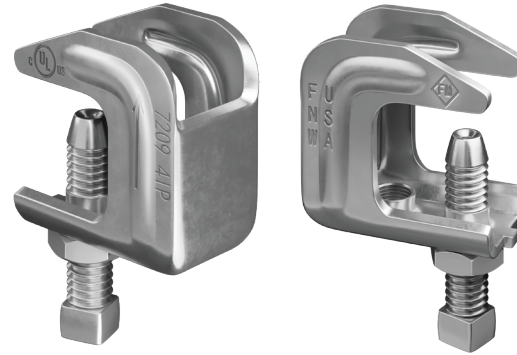
**FIGURE 7209**  
BEAM CLAMPS



UL/FM STAMPED BEAM CLAMP TOP MOUNT

FEATURES

- Finish: Pre-galvanized
- MSS SP-58, type 19
- Material: Carbon steel
- Hanger rod not included
- Domestic



Set Screw Torque		
Nominal Thread Size		3/8
Rec. Torque	in-lbs	60
	N-m	(6.8)

**Note:** Set screws should be tightened so they contact the I-beam, then add additional 1/4 to 1/2 turn if a torque wrench is unavailable. Caution should be taken not to overtighten the set screw. The set screw must contact the sloped side of the channel, I-beam or other applicable building structure. Clamp must be installed with the arrow mark on clamp pointing up and must be installed in top orientation. Please see the drawing that shows the only acceptable installation positions. On parallel flange surfaces, the clamp may be attached to the upper or lower flange but must be in the top orientation as shown.

REFERENCE CHART

Catalog Number	Rod Size A	B	C	D	E	Max Pipe Size	Max Rec. Load		Wt. Each With Nut	
							lbs	kN	lbs	lbs
FNW7209GC	3/8"	3/4" (19.05)	1-9/16" (39.69)	1-1/2" (38.10)	9/16" (14.29)	4" (100)	610	(2.71)	0.20	(0.09)