

SPECIFICATIONS

Notes:

- 1. 4" FPT inlet/outlet and 4" plain fittings
- 2. Unit weight - w/ composite covers: 1,116 lbs. (for wet weight add 12,525 lbs.)
- 3. Maximum operating temperature: 150° F continuous
- 4. Capacities - Liquid: 1,500 gal.;
Grease: 10,061 lbs. (1,379 gal.) @100GPM
Grease: 9,446 lbs. (1,294 gal.) @200GPM
Solids: 318 gal.
- 5. Satisfies Miami DERM 99% efficiency requirements; retaining the following capacities at 99% efficiency:
9,897 lbs. (1,356 gal.) @100GPM
8,093 lbs. (1,109 gal.) @200GPM
- 6. For gravity drainage applications only.
- 7. Do not use for pressure applications.
- 8. Cover placement allows full access to tank for proper maintenance.
- 9. Vent not required unless per local code.
- 10. Engineered inlet and outlet diffusers with inspection ports are removable to inspect / clean piping.
- 11. Integral air relief / Anti-siphon / Sampling access.
- 12. Adjustable cover adapters provide up to 4" of additional height.
- 13. Designed for below-grade, above-grade, indoor or outdoor installations.
- 14. Safety Star®, access restrictor built into each cover adapter, prevents accidental entry to tanks (450 lb rating).

ENGINEER SPECIFICATION GUIDE

Schier Great Basin™ grease interceptor model # GB-1500 shall be lifetime guaranteed and made in USA of seamless, molded polyethylene with minimum 7/16" uniform wall thickness. Interceptor shall be furnished for above or below-grade installation with adjustable cover adapter and Safety Star® access restrictor built into each cover adapter. Interceptor shall be certified to ASME A112.14.3 (Type D) and CSA B481.1 as well as certified to IAPMO/ANSI Z1001-2021. Interceptor flow rate shall be 100 GPM or 200 GPM. Interceptor grease capacity shall be 10,061 lbs. Cover shall provide water/gas-tight seal and have minimum 2,000 lbs. load capacity.

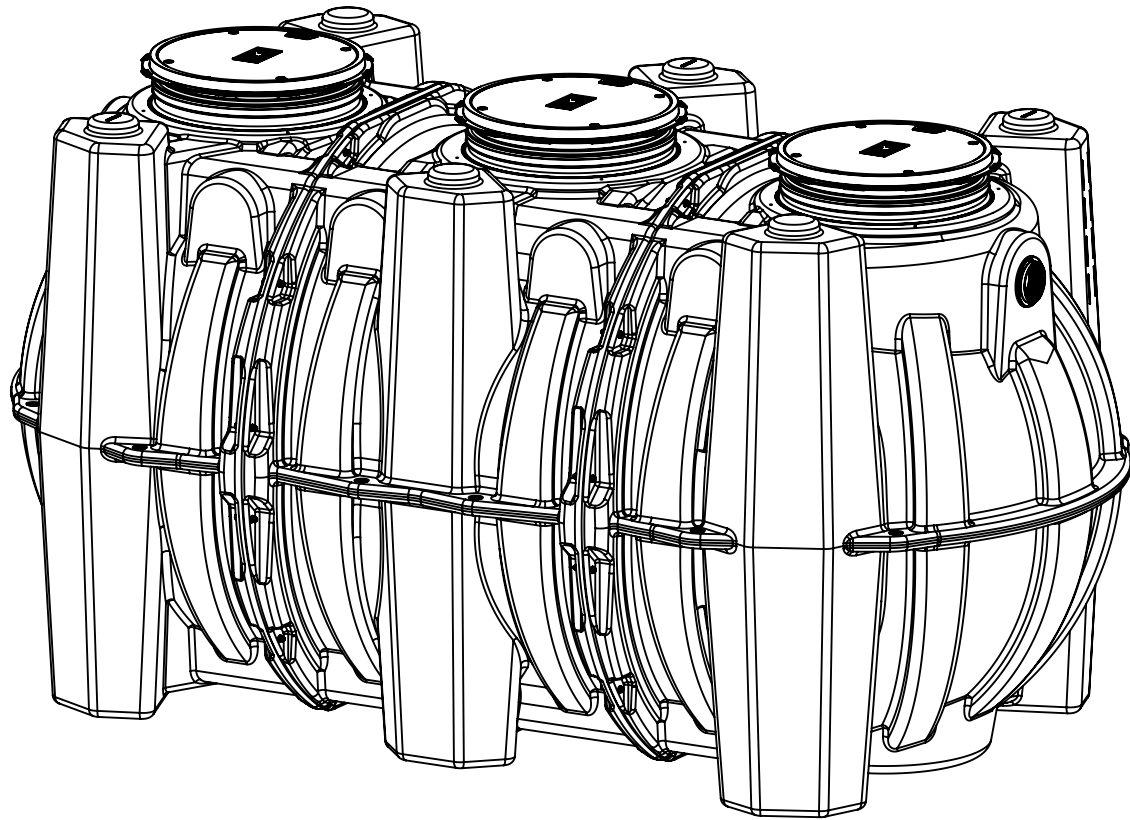
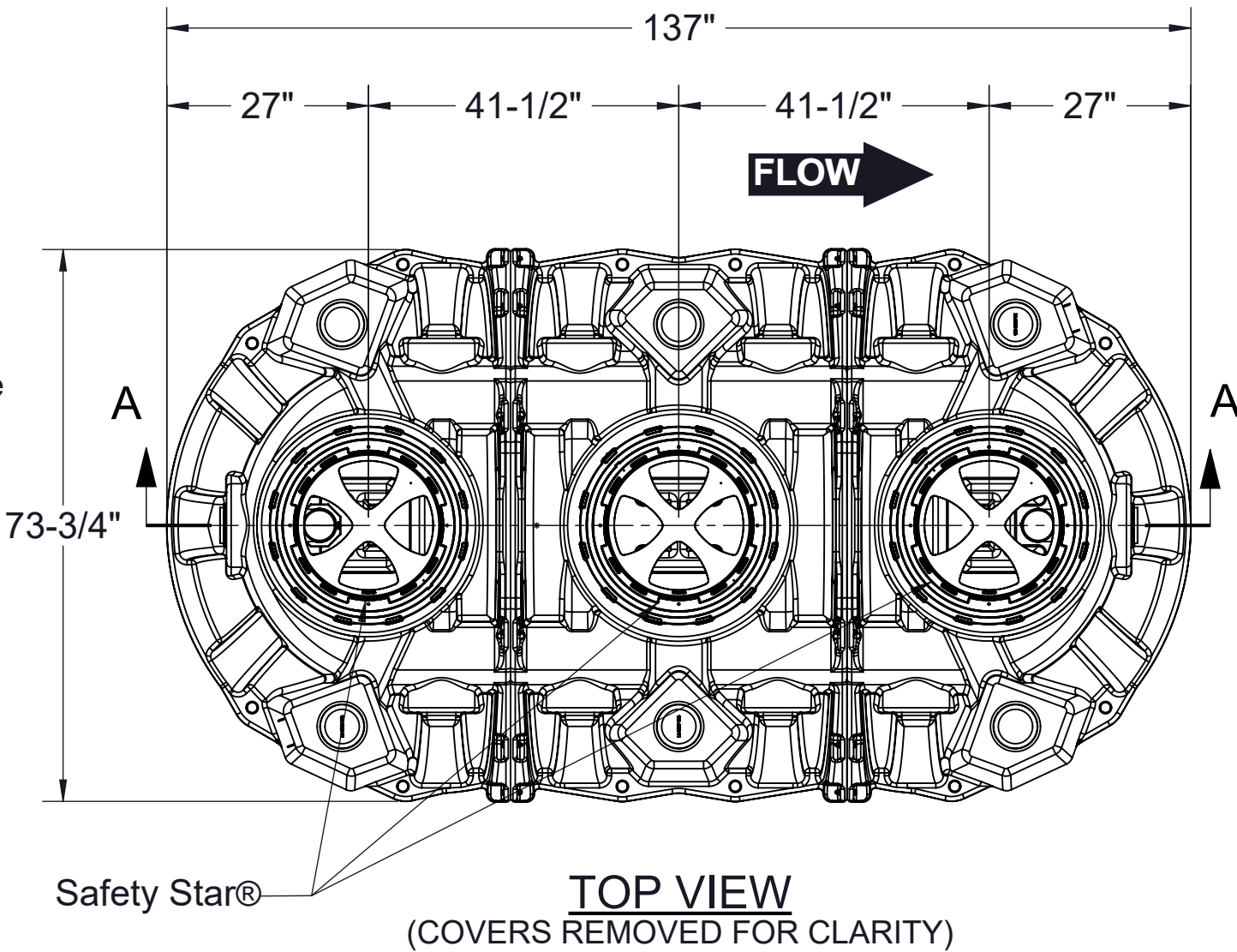
CERTIFIED PERFORMANCE

Great Basin™ hydromechanical grease interceptors are third party performance-tested and listed by IAPMO to ASME #A112.14.3 and CSA B481.1 grease interceptor standards and greatly exceed requirements for grease separation and storage. They are compliant to the Uniform Plumbing Code and the International Plumbing Code.

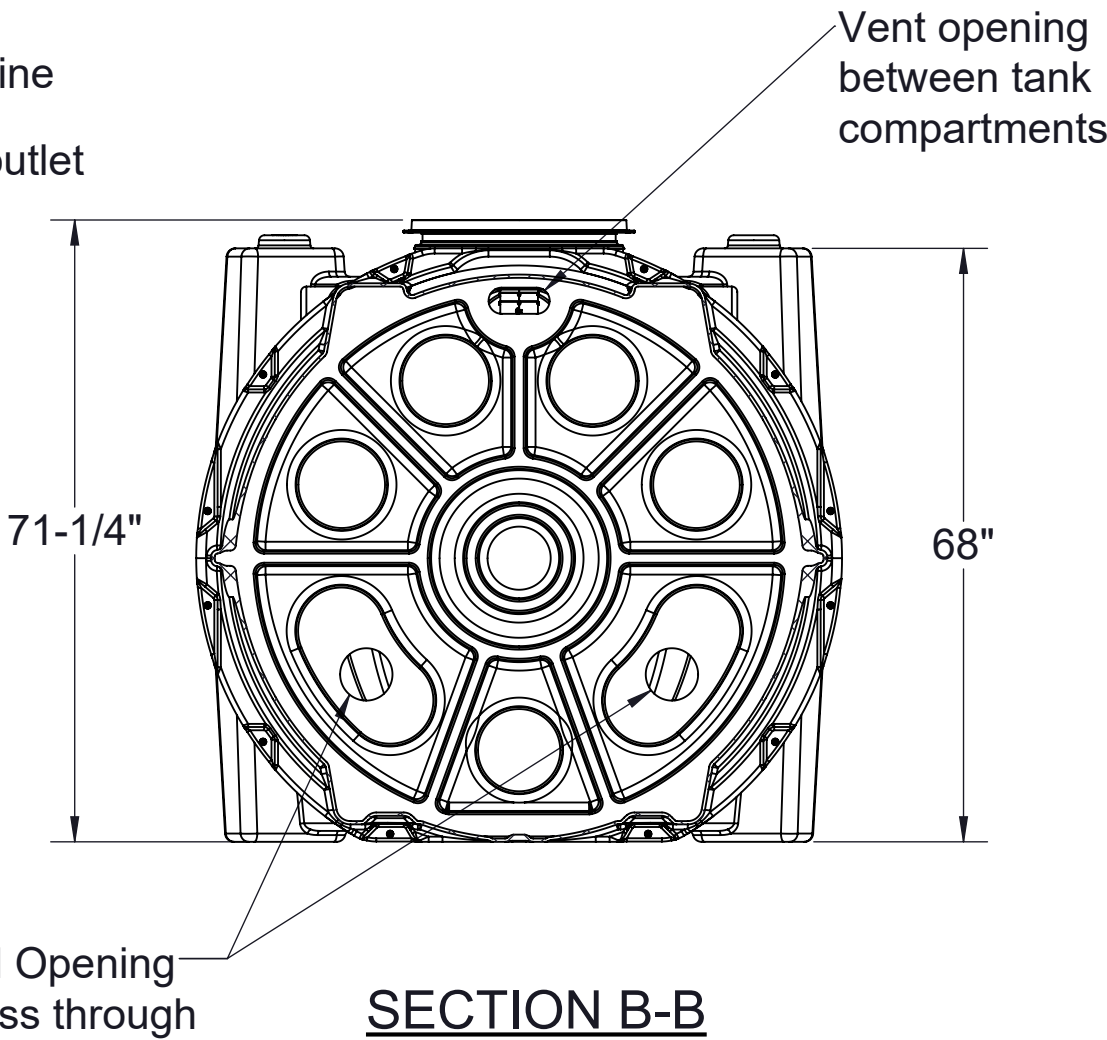
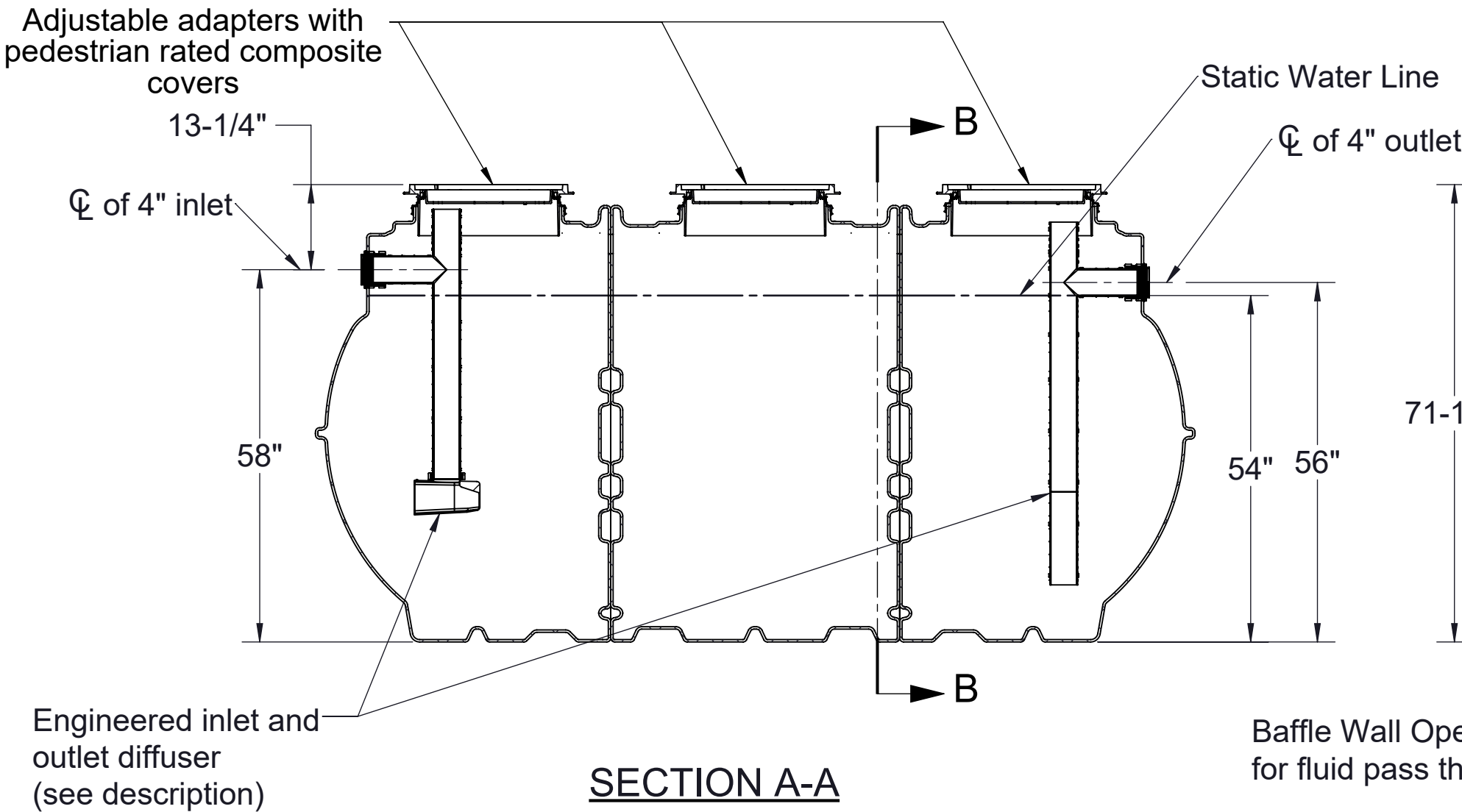
Type D certification does not require a flow control



Satisfies Miami DERM 99% efficiency requirements. Product labels are permanently attached to inside and outside of unit for easy viewing.



ISOMETRIC VIEW



SPECIFICATION SHEET

MODEL NUMBER:

GB-1500

PROPRIETARY AND CONFIDENTIAL

THE INFORMATION CONTAINED IN THIS DRAWING IS THE SOLE PROPERTY OF SCHIER PRODUCTS. ANY REPRODUCTION IN PART OR AS A WHOLE WITHOUT THE WRITTEN PERMISSION OF SCHIER PRODUCTS IS PROHIBITED.

PART NUMBER:

4085-004-01

DESCRIPTION:

GB-1500 GREASE INTERCEPTOR 100 GPM / 200 GPM
4" PLAIN/FPT INLET/OUTLET, PEDESTRIAN RATED COMPOSITE COVERS

DWG BY:

T.ASAY

DATE:

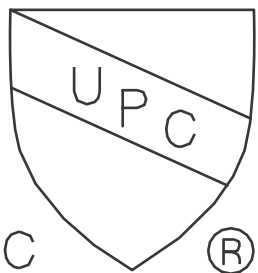
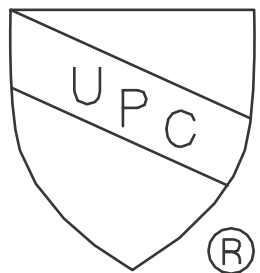
12/13/2022

REV:

B

ECO:

012623CS



SCHIER

6455 Woodland Dr
Shawnee, KS 66218
Tel: 913-951-3300
Fax: 913-951-3399
schierproducts.com