



# E-Tronic® 40 Series Installation Instructions

Touchless Faucets

# CHICAGO FAUCETS

### Safety Information

Read entire user guide to ensure proper installation. Compliance and conformity to local codes and ordinances is the responsibility of the installer.

Please follow these important safety guidelines while handling and installing this product:

- FCC Caution: Any changes or modifications not expressly approved by the party responsible for compliance could void the user's authority to operate this equipment
- Make sure there is enough space and lighting available during installation and service.
- Do not modify or convert this product before, during, or after installation. Doing so voids all warranties

### Internal Antenna Specifications

- Peak Gain of the antenna: -1.7 dBi
- Frequency range: 2400-2500 MHz
- FCC ID: 2APTX-CFC02

This equipment has been tested and found to comply with the limits for a Class B digital device, pursuant to Part 15 of the FCC Rules. These limits are designed to provide reasonable protection against harmful interference in a residential installation. This equipment generates uses and can radiate radio frequency energy and, if not installed and used in accordance with the instructions, may cause harmful interference to radio communications. However, there is no guarantee that interference will not occur in a particular installation. If this equipment does cause harmful interference to radio or television reception, which can be determined by turning the equipment off and on, the user is encouraged to try to correct the interference by one of the following measures:

- Reorient or relocate the receiving antenna.
- Increase the separation between the equipment and receiver.
- Connect the equipment into an outlet on a circuit different from that to which the receiver is connected.
- Consult the dealer or an experienced radio/TV technician for help.

This device complies with Part 15 of the FCC Rules. Operation is subject to the following two conditions: (1) This device may not cause harmful interference, and (2) this device must accept any interference received, including interference that may cause undesired operation.

### Installer

- Read this entire instruction sheet before installing to ensure proper installation.
- Installation must comply with local codes and ordinances.
- Do not use sealing compound. Possible solenoid contamination could occur and will void any warranty.
- Exercise care when installing the device to prevent marring the exposed, decorative surfaces.

The supply piping to these devices shall be securely anchored to the building structure to protect the installed device against unnecessary movement when operated by the user.

NOTE: The information in this manual is subject to change without notice.

Installation may be performed at different times of construction by different individuals. For this reason, these instructions should be left on-site with the facility or maintenance manager.

NOTE: Before installation, turn off water supplies to existing faucet and remove faucet if replacing. Clean faucet basin and clear away debris. **Flush all supply lines before connecting to faucet.** Failure to do so can result in debris clogging the inlets and/or internal control and mixing valves.

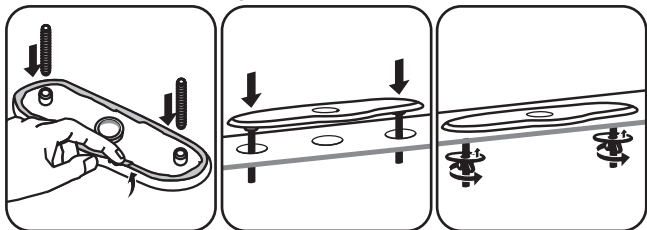
NOTE: Faucet must be serviced using only a Chicago Faucets recommended replacement outlet.

The faucet comes complete and ready to install. You will need the following tools and supplies to complete the installation:

- Basin Wrench
- Plumber's Putty
- Adjustable Locking Pliers
- Adjustable Wrench
- Hex Key (supplied)
- Aerator Key (supplied)

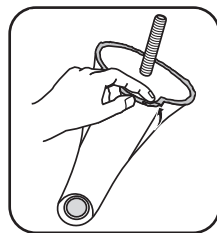
### Faucet Installation

#### 8" Centers with coverplate

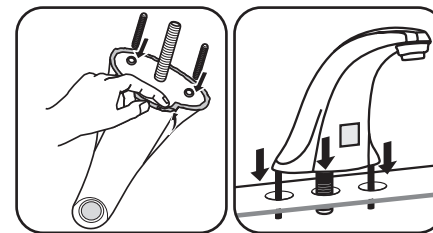


1. If you are using an 8" cover plate, apply the plumbers putty to plate and mount it to the deck.

#### Single Hole



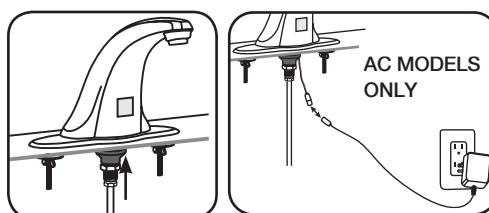
#### 4" Centerset



2. Place plumbers putty on the product and place on the deck.



3. Secure faucet with mounting hardware. Flush line before connecting supply to fitting. NOTE: Supply hose not provided.

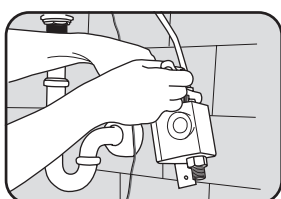


4. Connect supply hose to fitting. AC models only: plug in transformer.

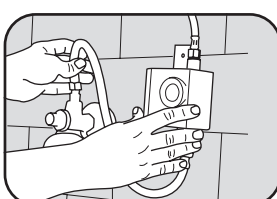
NOTE: For hardwire transformer, purchase accessory 242.340.00.1.

### SSPS Installation

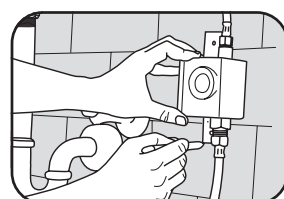
The SSPS Generator comes with all the components needed for installation. In addition to the tools listed above, a hand drill is required for installation.



1. **Connect faucet to SSPS unit.** Attached to faucet and install water supply line. Install filter at this point.



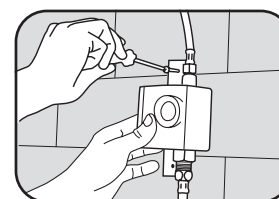
2. **Position SSPS under sink.** Carefully position to allow connection of water lines and wiring.



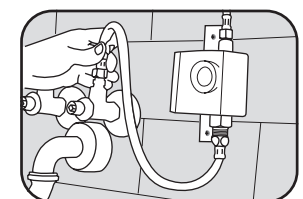
3. **Mark holes.** Position mounting bracket and mark mounting holes.



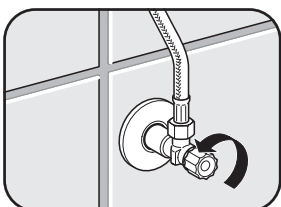
4. **Drill holes.** Drill holes for screw anchors.



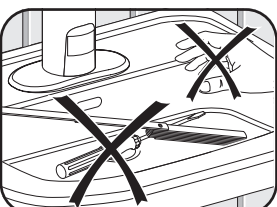
5. **Secure SSPS to wall.** Insert anchors into holes and mount SSPS unit to wall with supplied screws.



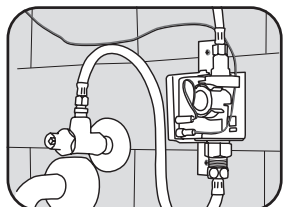
6. **Attach to supply.** Attach inlet hose to supply and turn on water. With water on, check system for leaks.



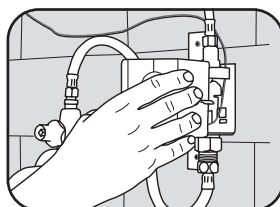
7. **Fully open supply valve.**



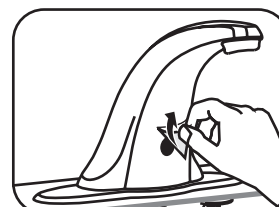
8. **Remove all items from sink.**



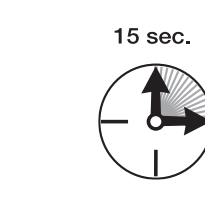
9. **Connect wiring.** Remove cover and connect faucet wire to SSPS and secure into wire harness.



10. **Attach cover.** Faucet is ready to run through programming sequence.



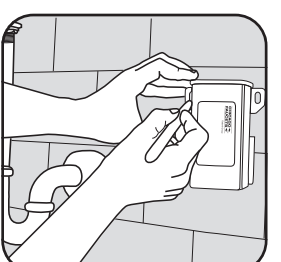
11. **Remove protective covering from sensor.**



12. **Wait for 15 seconds for faucet to calibrate to its environment.**

Result — The faucet is now activated.

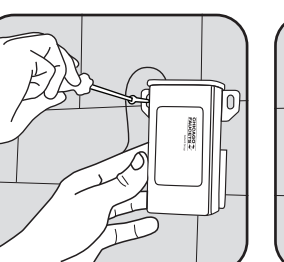
### Mounting of Long Term Power System (LTPS) Pack (LTPS Models Only)



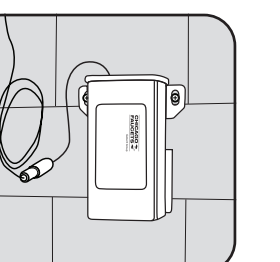
1. Position LTPS unit on wall and mark mounting holes on mounting surface.



2. Drill holes for screw anchors.



3. Insert anchors into holes and mount LTPS unit to wall with supplied screws.



4. Connect spout wire to LTPS connector wire, making sure connectors are oriented correctly.

### LTPS End of Life Directives:

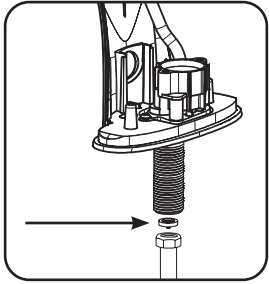
In an effort to produce environmentally conscious products, the LTPS contains materials that must be recycled by specialized companies. Please ensure you dispose of your LTPS according to local regulations. Follow applicable laws and regulations for transport, shipping, and disposal of batteries. For details on, and locations for recycling lithium-based batteries, please contact a government recycling agency, your waste-disposal service, or visit reputable online recycling sources such as [www.call2recycle.org](http://www.call2recycle.org).

# E-Tronic® 40 Installation Instructions

(continued)

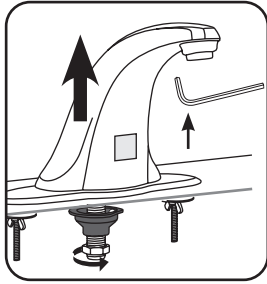
**CHICAGO  
FAUCETS**

## Servicing Procedures



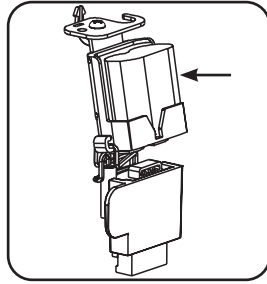
### Replacing Filter

Close the stop valves and disconnect the 1/2" NPSM connection to the faucet shank. The screen filter is located in the shank of the faucet. Remove filter with a pick or pliers and place the new one in.



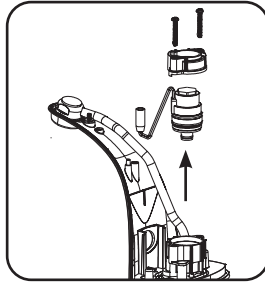
### Servicing Internal Components

1. Remove screw with T15-wrench provided (Torque screw specify) and lift spout cover.



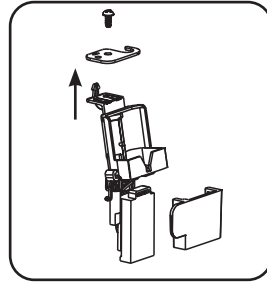
### Battery Servicing

2. Simply press down and slide out the top to remove the old battery. Place the new battery by making contact connection on the bottom and sliding the top of the battery inside the battery holder.



### Solenoid Servicing

3. Remove two bonnet screws and take out bonnet. Remove solenoid by pulling upward. Note: Solenoid is not threaded into valve body.



### Module Servicing

4. Remove the screw and replace existing module with new one. Replace the screw.

## TROUBLESHOOTING

### Possible Cause

### Solution

#### Problem - No Water Flow

Supply valves are closed.	Open supply valves.
Aerator is blocked or dirty.	Clean or replace aerator See Servicing Procedures Section.
Inlet water line filter is dirty.	Clean or replace filter blocked See Servicing Procedures Section.
Braided hose is kinked.	Eliminate braided hose kink.
No external water pressure.	Check water pressure. Provide water pressure.
Battery is drained (DC faucets only).	Replace battery. See Servicing Procedures Section.
Battery contacts are corroded (DC faucets only).	Clean contacts or replace battery. See Servicing Procedures Section.
Reverse battery insertion (DC faucets only).	Insert battery correctly.
Connector between transformer or SSPS unit and power adapter unplugged (AC or SSPS faucets only).	Plug connector.
Power adapter contacts are corroded (AC or SSPS faucets only).	Clean contacts.
Connecting cable is kinked or broken (AC or SSPS faucets only).	Replace defective parts. See Servicing Procedures Section.
No external power supply (AC or SSPS faucets only).	Check external power supply. Provide power supply.
Solenoid valve inoperable.	Replace solenoid valve. See Servicing Procedures Section.
Electronics module inoperable.	Contact Chicago Faucets technical service or replace electronics module. See Servicing Procedures Section.
Power adapter defective.	Contact Chicago Faucets (AC or SSPS faucets only) technical service or replace power adapter. See Servicing Procedures Section.
Infrared window scratched or dirty.	Clean window with smooth cloth.

#### Problem - Water runs continuously and stops when object is present

Connector between electronics module and solenoid valve plug is reversed.	Plug connector properly.
---	--------------------------

#### Problem - Water runs continuously

Interfering object is in monitoring range.	Remove object from range monitoring area. Remove & re-install shut-off screw. Do not disturb sensor scanning procedure (wait until water flow stops and LED switches off).
Defective electronics module.	Replace electronics module. See Servicing Procedures Section.
Improper sensor mode.	Change mode or reset sensor. See Servicing Procedures Section.
External water pressure too high.	Check external water pressure. Provide pressure between 20-125 psi.
Solenoid valve inoperable.	Replace solenoid valve. See Servicing Procedures Section.

#### Problem - Water flows although shut-off screw is removed

Electronics module is inoperable.	Replace electronics module. See Servicing Procedures Section.
Water drops on infrared window.	Clean window with smooth cloth.

#### Problem - Faucet turns on by itself

Infrared window is dirty or scratched.	Clean window with smooth cloth.
Input line pressure fluctuates .	Install appropriate line pressure regulators.

#### Problem - Faucet is leaking water

Connection between valve body and solenoid valve is loose.	Check O-rings. Replace O-rings when damaged. Carefully reinstall solenoid valve and do not over-tighten.
Faucet drips, solenoid valve does not close properly.	Clean or replace solenoid valve. See Servicing Procedures Section.

#### Problem - Temperature can not be adjusted properly

No, or too little hot or cold water. Supply valves are not fully opened.	Fully open supply valves.
Inlet water line filter is dirty or blocked.	Clean or replace filter. See Servicing Procedures Section.
Braided hose is kinked.	Eliminate braided hose kink.
Temperature of hot or cold water supply is too low.	Check inlet water temperature or inspect boiler.
Shut off screw is missing or defective.	Replace shut-off screw. See Replacement Parts.

## Care and Maintenance

All Chicago Faucets fittings are designed and engineered to meet or exceed industry performance standards.

Care should be taken when cleaning this product. Do not use abrasive cleaners, chemicals or solvents as they can result in surface damage.

Use mild soap with warm water for cleaning and protecting the surface of Chicago Faucets fittings.

For additional technical assistance, call 800/TEC-TRUE (800-832-8783) or visit our website at [chicagofaucets.com](http://chicagofaucets.com).

## CHICAGO FAUCETS LIMITED WARRANTY

**TO WHOM DOES THIS WARRANTY APPLY?** — The Company extends the following limited warranty to the original user only.

**WHAT DOES THIS WARRANTY COVER AND HOW LONG DOES IT LAST?**

This warranty covers the following Commercial Products:

**LIFETIME FAUCET WARRANTY** — The "Faucet," defined as any metal cast, forged, stamped or formed portion of the Product, not including electronic or moving parts or other products separately covered by this Limited Warranty or water restricting components or other components, is warranted against material manufacturing defects for the life of the Product.

**FIVE YEAR FAUCET WARRANTY** — Certain Products and portions of the Product are warranted against material manufacturing defects for a period of five (5) years from the date of Product purchase. Products warranted against material manufacturing defects for a period of five (5) years from the date of Product purchase are referred to by the product numbers 42X, 43X, 15XX and E-Tronic™ - 4X, 5X, 6X, 7X, 8X and 9X. All zinc die cast portions of Product are warranted against material manufacturing defects for a period of five (5) years from the date of Product purchase.

**THREE YEAR ELECTRONICS WARRANTY** — Electronic components, including the solenoid, are warranted for three (3) years from the date of installation.

**FIVE YEAR CARTRIDGE WARRANTY** — The "Cartridge", defined as the metal portion of any Product typically referred to by the product numbers containing 1-099, 1-100, 1-310, 377X, 217X and 274X, excluding any rubber or plastic components, is warranted against material manufacturing defects for a period of five (5) years from the date of Product purchase. All Cartridges included in the Company's Single Control or Shower Products also are warranted against material manufacturing defects for a period of five (5) years from the date of Product purchase.

**ONE YEAR FINISH WARRANTY - COMMERCIAL** — For Products used in commercial applications, the finish of the Product is warranted against material manufacturing defects for a period of one (1) year from the date of Product purchase.

**OTHER WARRANTIES** — All other Products not covered above are warranted against material manufacturing defects for a period of one (1) year from the date of Product purchase.

Other restrictions and limitations apply. For complete warranty details, call Chicago Faucets Customer Service at 847-803-5000 or visit [chicagofaucets.com](http://chicagofaucets.com).

The Chicago Faucet Company  
2100 South Clearwater Drive  
Des Plaines, IL 60018  
Phone: 847/803-5000  
Fax: 847/803-5454  
Technical: 800/832-8783  
[www.chicagofaucets.com](http://www.chicagofaucets.com)