

Installation Instructions

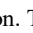
NOTE: Read the entire instruction manual before starting the installation.

SAFETY CONSIDERATIONS

Improper installation, adjustment, alteration, service, maintenance, or use can cause explosion, fire, electrical shock or other conditions which may cause death, personal injury or property damage. Consult a qualified installer, service agency, or your distributor or branch for information or assistance. The qualified installer or agency must use factory-authorized kits or accessories when modifying this product. Refer to the individual instructions packaged with the kits or accessories when installing.

Follow all safety codes. Wear safety glasses, protective clothing and work gloves. Use quenching cloths for brazing operations. Have fire extinguisher available. Read these instructions thoroughly and follow all warnings or cautions attached to the unit. Consult local building codes and the current editions of the National Electrical Codes (NEC) NFPA 70.

In Canada, refer to the current editions of the Canadian Electrical Code CSA C22.1.

Recognize safety information. This is the safety-alert symbol . When you see this symbol on the unit and in instructions or manuals, be alert to the potential for personal injury.

Understand the signal words DANGER, WARNING and CAUTION. These words are used with the safety-alert symbol. DANGER identifies the most serious hazards which will result in severe personal injury or death. WARNING signifies hazards which could result in personal injury or death. CAUTION is used to identify unsafe practices, which may result in minor personal injury or product and property damage. NOTE is used to highlight suggestions which will result in enhanced installation, reliability, or operation.



WARNING

ELECTRICAL SHOCK HAZARD

Failure to follow this warning could result in personal injury or death. Before installing, modifying or servicing system, always turn off main power to system. There may be more than one disconnect switch. Lock out and tag switch with a suitable warning label.



CAUTION

CUT HAZARD

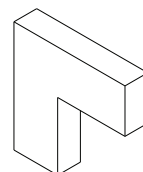
Failure to follow this caution may result in personal injury. Sheet metal parts may have sharp edges or burrs. Use care and wear appropriate protective clothing and gloves when handling parts.

INTRODUCTION

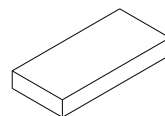
The fan coil with the installed gasket package allows the unit to meet requirement of less than 2% cabinet leakage rate at 0.5 inches W.C., and 1.4% cabinet leakage rate at 0.5 inches W.C. when tested in accordance with the American Society of Heating, Refrigeration and Air-Conditioning Engineers (ASHRAE) 193 standard. The gasket must be mounted exactly as illustrated by these instructions in order to meet leakage requirements.

This kit may also be used to replace damaged gasket pieces on existing units.

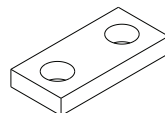
Kit Contents



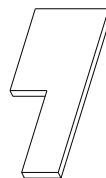
X 2



X 3



X 2



X 2



X 4

A190342

INSTALLATION

Make sure to turn off and lock out all power sources to the fan coil unit. Ensure that the gasket is taut at application and that the mating surface is clean and free of contaminants for optimal adhesion.

NOTE: The kit is designed to accommodate the largest size unit. Some of the longer gasket pieces may need to be shortened to fit your unit.

IMPORTANT: Make sure the gasket is correctly positioned before applying to the mating surface. Once in place, the gasket is difficult to reposition. Removing and replacing may affect gasket adhesion.

Read these complete instructions before starting to make sure you understand the steps. The overall photos at the end can help with earlier steps.

1. Remove the Lower Door, Fitting Door, Filter Door and filter, and Upper Door from the unit.
2. Apply the L-shaped gaskets to the top outer corners as shown in Figure 1.
3. Apply the short gaskets to the front edge per Figure 1. Use the gasket pieces either with or without holes (to fit over screw heads) depending on your unit.

4. Apply the gaskets to the filter door opening on the bottom of the cabinet as shown in Figure 1.
5. Apply the gasket to the bottom edge of the upper door as shown in Figure 2.
6. Apply two long gaskets to the filter door as shown in Figure 2.
7. Make sure all gaskets are not damaged, and then re-mount the Upper Door, Fitting Door, and Lower Door. Install the filter and Filter Door. Make sure the doors fit uniformly and evenly along the edges.

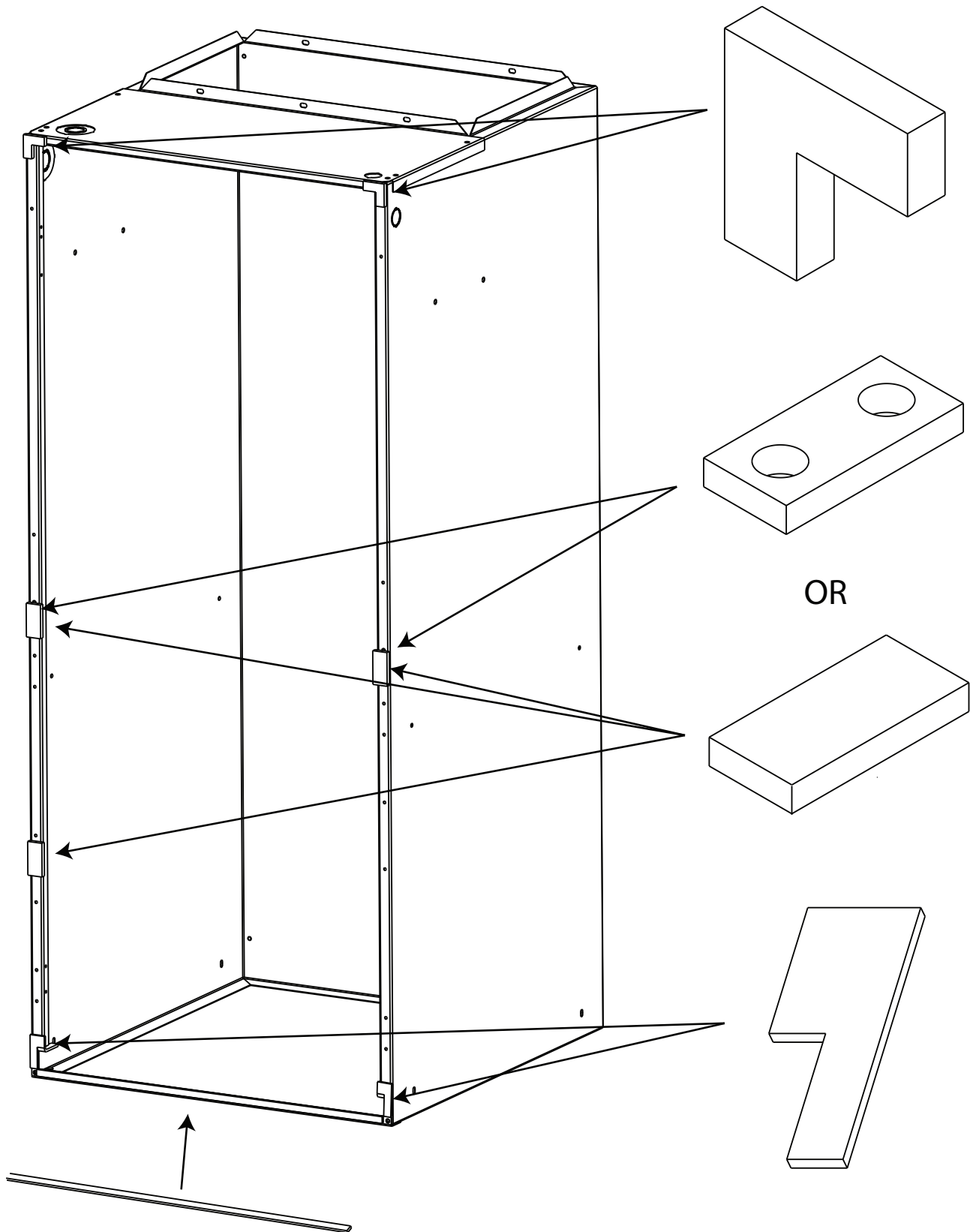
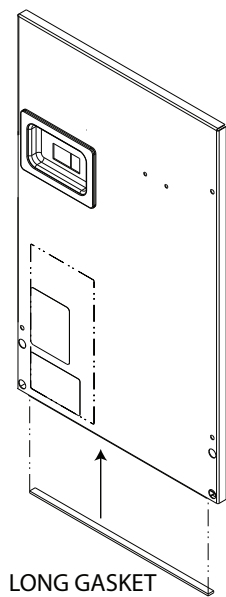


Fig. 1 – Front Edge of Unit

A190343

UPPER DOOR



FILTER DOOR

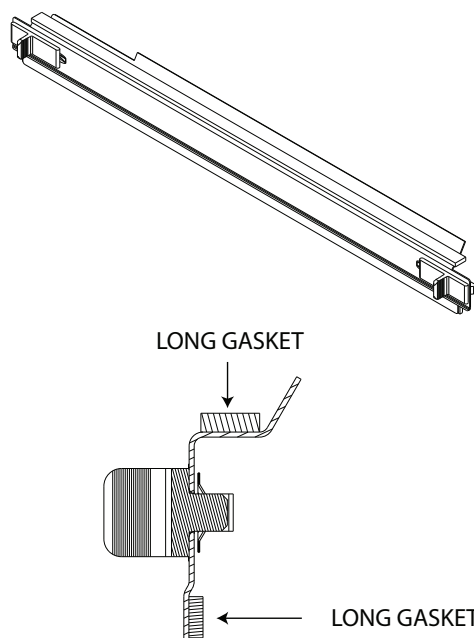


Fig. 2 – Upper Door and Filter Door

A190344

