

SMMSe/SHRMe VRF Rooftop Unit 40QQ-048ABA3-0A0

TOSHIBA
Carrier

Submittal Data

Job Name _____ Location _____

Tag _____



STANDARD FEATURES

- Vane Axial Fan (VAF) Technology
- Three Fan Speeds - High, Medium and Low
- Electronically Commutated Fan Motor (ECM)
- Built In Pulse Modulating Valve For Installation Ease
- Built-In Mounting Bracket for FS Box Installation (for Heat Recovery)
- Horizontal and Vertical Economizer Option
- 14" or 24" Roof Curb Option
- Electric Heat Option

INDOOR UNIT MODEL	40QQ-048ABA3-0A0	
PERFORMANCE		
Cooling Rated Capacity	Btu/h	48,000
Heating Rated Capacity	Btu/h	52,000
Rated Airflow Cooling	CFM	1350
Rated Airflow Heating	CFM	1750
Sound Data (H, M, L)	dBA	76/73/66
ESP (Factory Default)	wg	0.2
ESP (Max)	wg	1.2
ELECTRICAL		
Power Supply	V/Ph/Hz	208-230/1/60
MCA	A	8.0
MOCP	A	15.0
Full Load Amps (FLA)	A	6.1

PHYSICAL DATA		
Pipe Connection Size - Liquid	inches	3/8
Pipe Connection Size - Suction	inches	5/8
Pipe Connection Size - Drain	inches	3/4
Refrigerant	R410A	
DIMENSIONS (inches)	H (in)	41-3/8
	W (in)	74-3/8
	D (in)	46-5/8
NET WEIGHT	lbs	388
SHIPPING WEIGHT	lbs	441

ACCESSORIES (Optional and Field Installed)

Economizer

- ☐ Vertical (CRECOMZR076A00)
- ☐ Horizontal (CRECOMZR077A00)

Roof Curb

- ☐ 14" (CRRFCURB001A01)
- ☐ 24" (CRRFCURB002A01)

Controls

- ☐ Wired Remote Controller
(7-Day Programmable) - RBC-AMS54E-UL

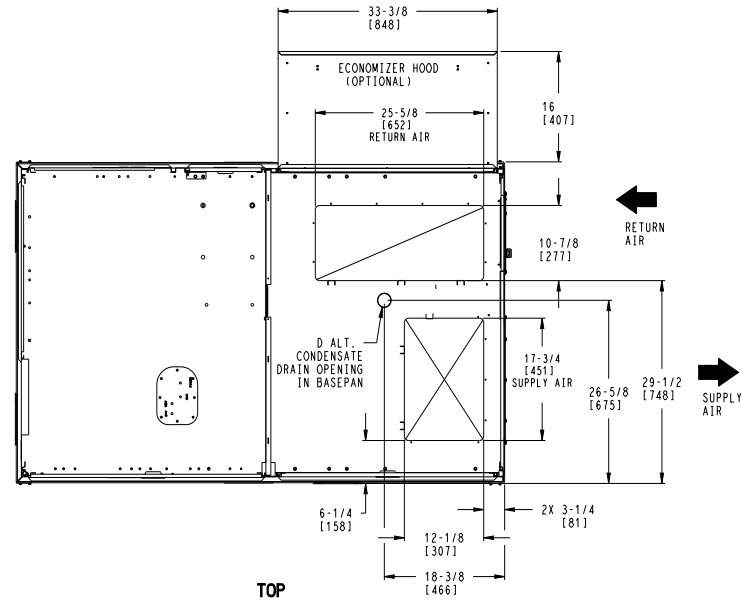
Electric Heater

- ☐ 6.5 kW + Single Point Power Kit
(CRHEATER324A00 + CRSINGLE037A00)
- ☐ 8.7 kW + Single Point Power Kit
(CRHEATER325A00 + CRSINGLE037A00)
- ☐ 16 kW + Single Point Power Kit
(CRHEATER328A00 + CRSINGLE037A00)

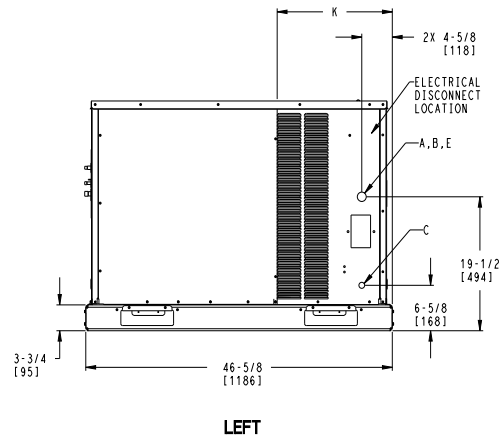
Dimensional Drawing Rooftop 40QQ-048ABA3-0A0

CONNECTION SIZES	
A	1-3/8" [35] DIA FIELD POWER SUPPLY HOLE
B	2" [50] DIA POWER SUPPLY KNOCKOUT
C	7/8" [22] DIA FIELD CONTROL WIRING HOLE
D	3/4" 14 NPT CONDENSATE DRAIN
E	2-1/2" [64] DIA POWER SUPPLY KNOCK-OUT

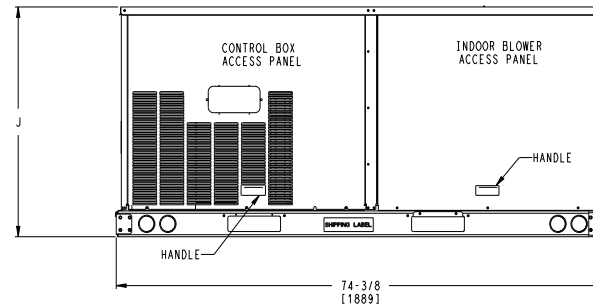
Unit	J	K
40QQ-048	41-3/8 [1051]	13-5/8 [346]



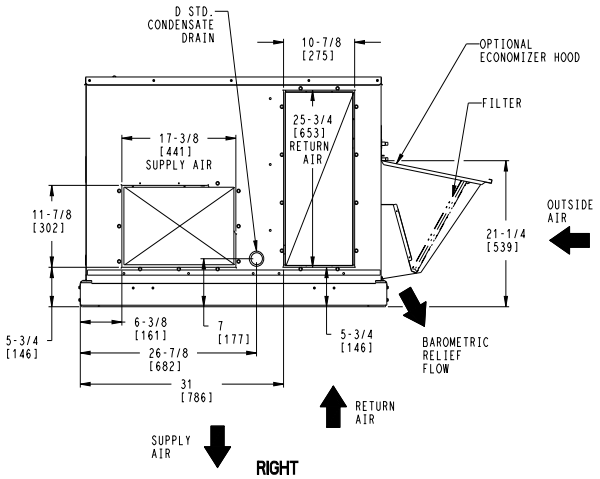
TOP



LEFT



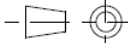


FRONT

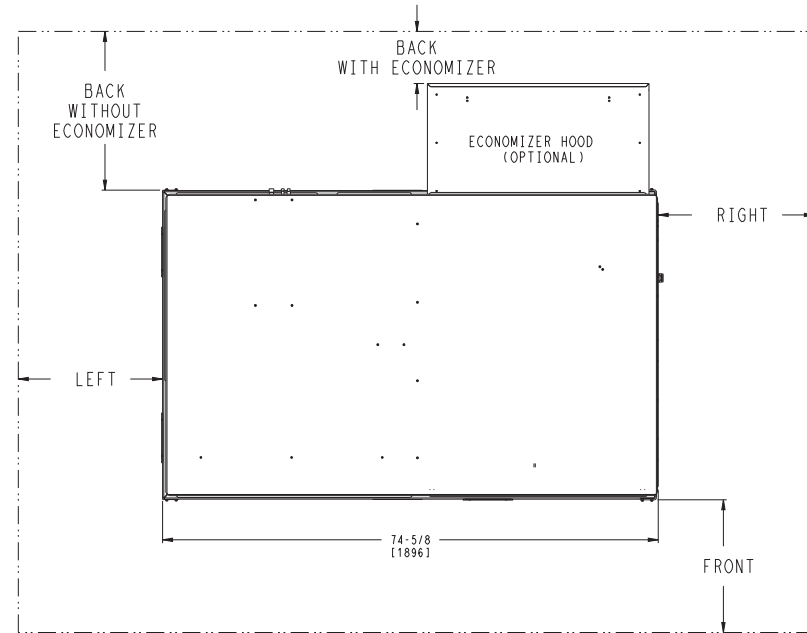
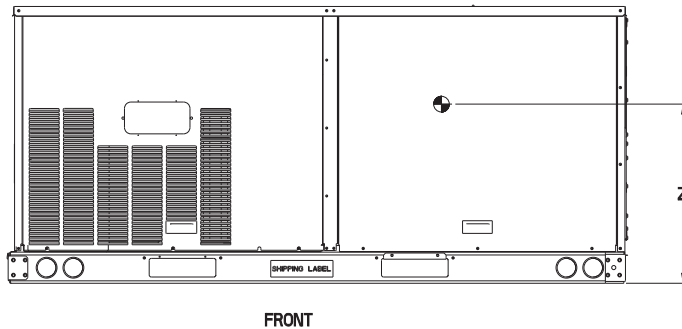
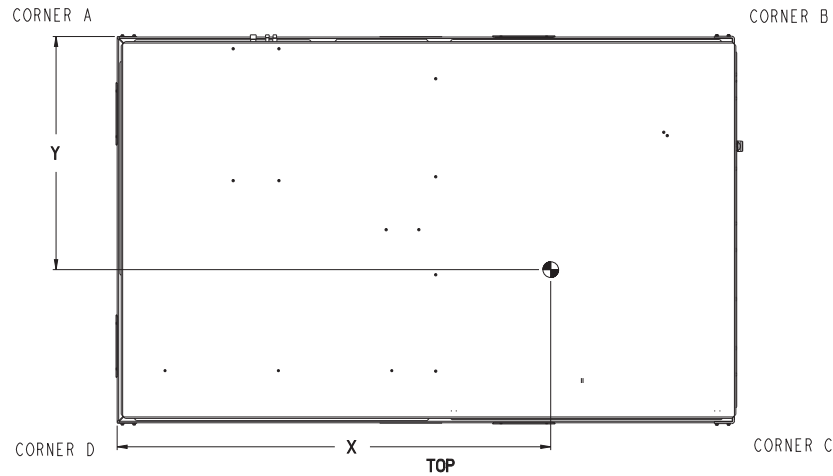


RIGHT

Notes

- Dimensions are in inches. Dimensions in [] are in millimeters
-  Center of gravity
-  Direction of air flow
-  All view drawn using 3rd angle

Dimensional Drawing Rooftop 40QQ-048ABA3-0A0



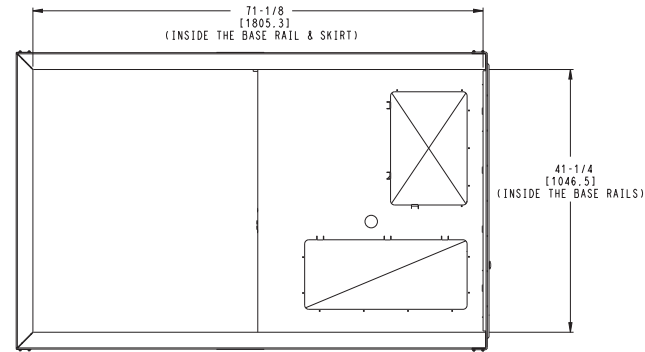
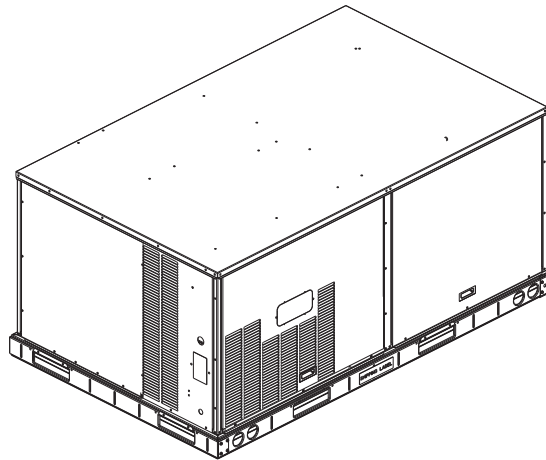
CLEARANCE			
SURFACE	SERVICE WITH: CONDUCTIVE BARRIER	SERVICE WITH: NONCONDUCTIVE BARRIER	OPERATING CLEARANCE
FRONT	48 [1219mm]	36 [914mm]	18 [457mm]
LEFT	48 [1219mm]	42 [1067mm]	18 [457mm]
BACK	48 [1219mm]	42 [1067mm]	18 [457mm]
BACK W/HOOD	36 [914mm]	36 [914mm]	18 [457mm]
RIGHT	36 [914mm]	36 [914mm]	18 [457mm]
TOP	72 [1829mm]	72 [1829mm]	72 [1829mm]

Unit	STD. UNIT WEIGHT (A)		CORNER WEIGHT (A)		CORNER WEIGHT (B)		CORNER WEIGHT (C)		CORNER WEIGHT (D)		C.G.		HEIGHT
	LBS.	KG.	LBS.	KG.	LBS.	KG.	LBS.	KG.	LBS.	KG.	X	Y	
40QQ-048	388	176	122	55.3	101	45.8	75	34	90	40.8	39-7/8 [1013]	25-1/4 [641]	20-3/8 [517]

Notes

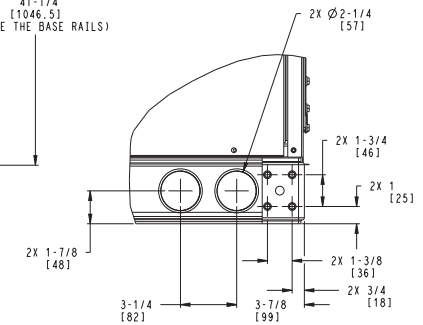
1. Dimensions are in inches. Dimensions in [] are in millimeters
2. Center of gravity
3. Direction of air flow
4. All view drawn using 3rd angle

Dimensional Drawing Rooftop 40QQ-048ABA3-0A0

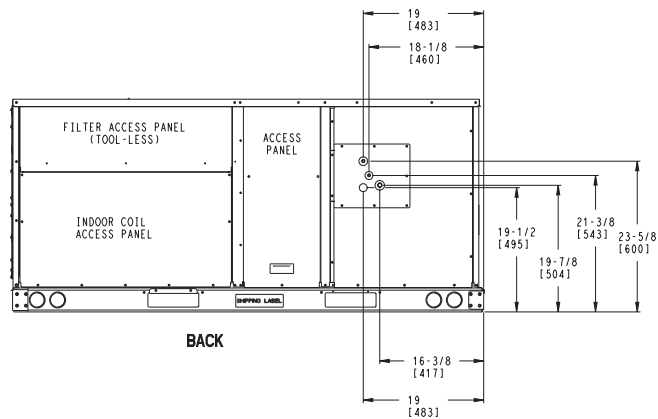


INSIDE BASERAIL DIMENSIONS

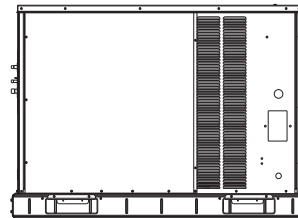
BOTTOM



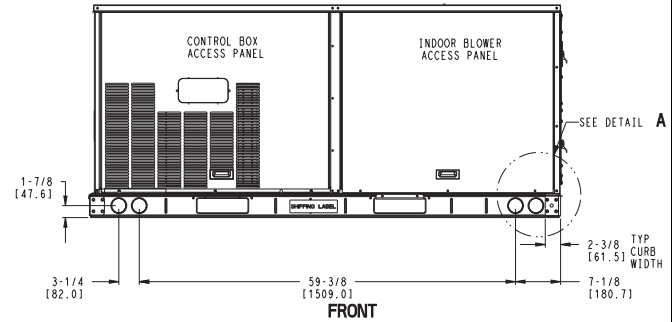
DETAIL A
TYP 4 PLCS



BACK



LEFT



FRONT

Note: Dimensions are in inches. Dimensions in [] are in millimeters.

