

PRODUCT INFORMATION PACKET

FASCO®

Model No: D0343

Catalog No: D0343

OEM Replacement Motor, 1/40 HP, 1 Ph, 60 Hz, 115 V, 1050/1550 RPM, 2 Speed, 3.3" Diameter, OAO



Regal and Fasco are trademarks of Regal Rexnord Corporation or one of its affiliated companies.

©2022 Regal Rexnord Corporation, All Rights Reserved. MC017097E

RegalRexnord



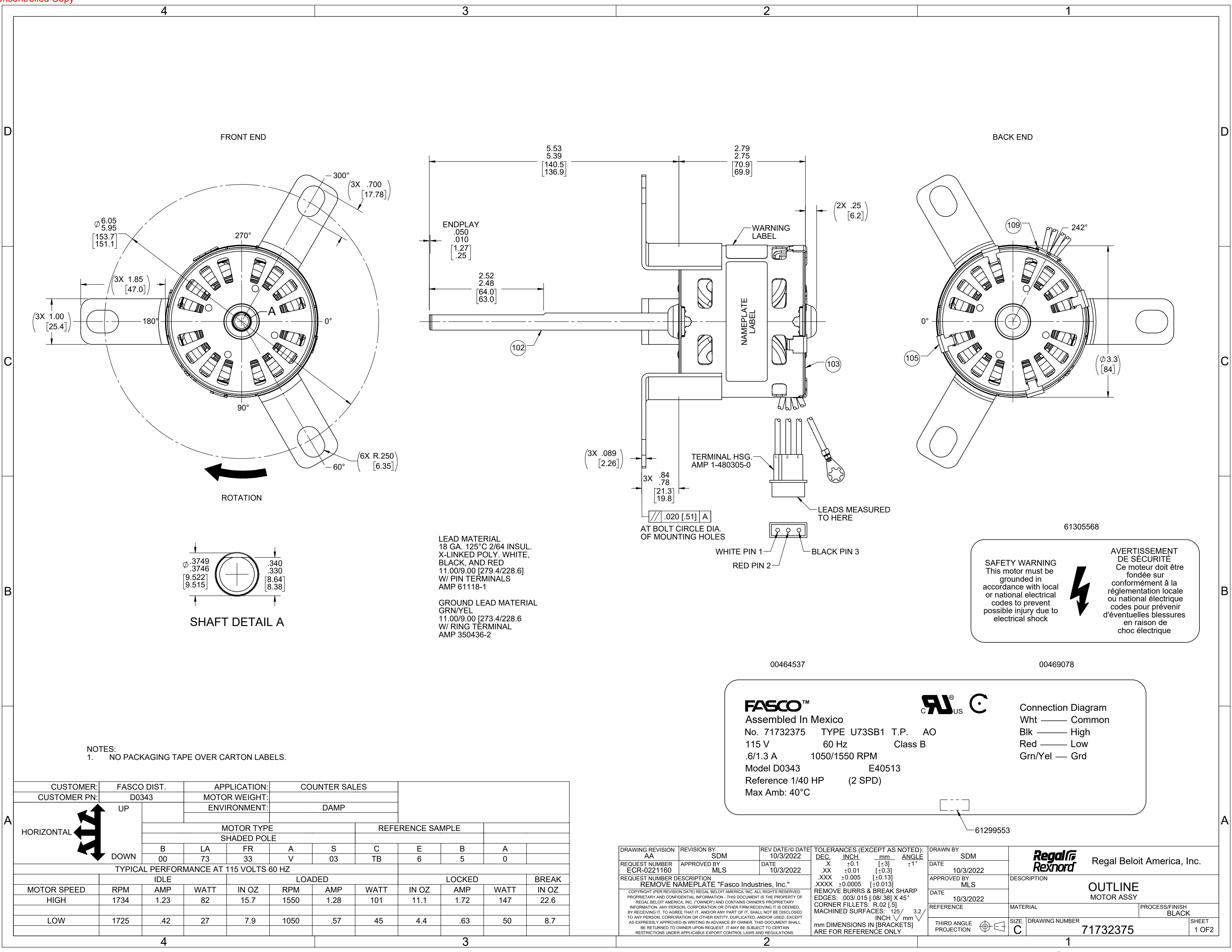
Nameplate Specifications

Output HP	1/40 Hp	Output KW	0.02 kW
Frequency	60 Hz	Voltage	115 V
Current	0.60/1.30 A	Speed	1050/1550 rpm
Service Factor	1	Phase	1
Duty	Air Over	Insulation Class	B
Frame	3.3	Enclosure	Open Air Over
Thermal Protection	Thermally Protected	Ambient Temperature	40 °C
UL	Recognized	CSA	N
CE	N	Number of Speeds	2

Technical Specifications

Electrical Type	Shaded Pole	Starting Method	Across The Line
Poles	4/6	Rotation	Clockwise Shaft End
Mounting	Lug	Drive End Bearing	Sleeve
Opp Drive End Bearing	Sleeve	Frame Material	Steel
Shaft Type	Flat	Overall Length	8.57 in
Frame Length	2.79 in	Shaft Diameter	0.375 in
Shaft Extension	5.50 in		
Connection Drawing	SEE OUTLINE	Outline Drawing	71732375-S01

This is an uncontrolled document once printed or downloaded and is subject to change without notice. Date Created:11/29/2022



D

C

B

A

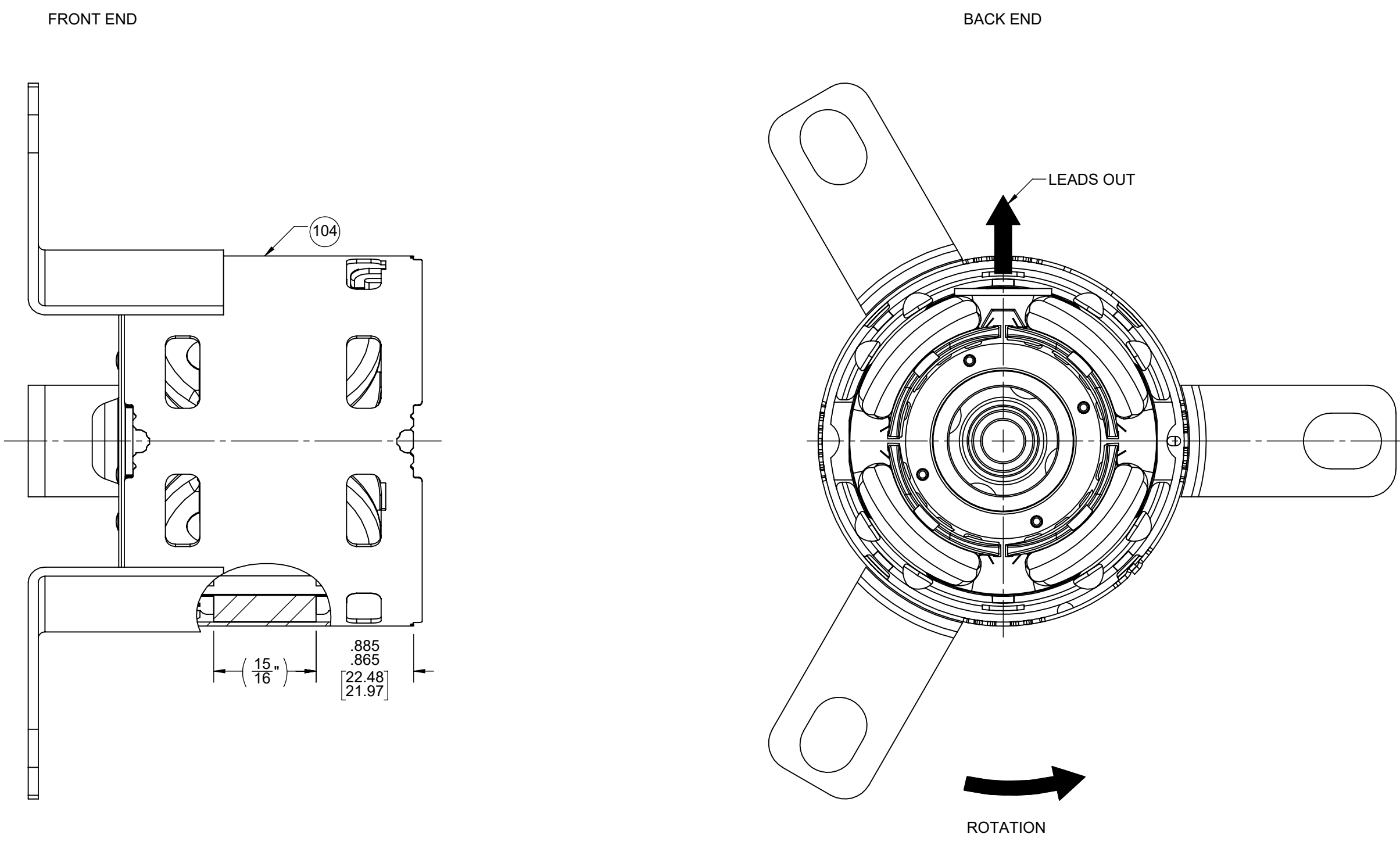
D

C

B


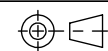
A

- NOTES:
1. STAKE STATOR TO MAIN FRAME PER 88830264.
 2. MAXIMUM TORQUE REQUIRED TO TURN MOTOR SHAFT IS 3/4 INCH-OUNCE.
 3. MAKE-UP WASHERS ARE TO BE ADDED OR DELETED TO ACHIEVE REQUIRED ENDPLAY.



PACKING SPECIFICATIONS

1. PACK 1 PER CONTAINER, 16 CONTAINERS PER LAYER, 4 LAYERS PER PALLET, 64 MAX. PER PALLET, PER 88834200.
2. PLACE FILLER TUBE ON SHAFT EXTENSION END AND PLACE THE PAD PACK PAPER IN CROSS FORM REF. 87855153 INSIDE THE CONTAINER, PLACE MOTOR IN CONTAINER, LEADS DOWN, CLOSE FLAPS AND TAPE.
3. CARTON LABELS MUST ALL FACE ONE DIRECTION TOWARD THE OPEN END OF THE PALLET. SEE 88834408
4. NO PACKAGING TAPE OVER CARTON LABEL.
5. PLACE (1) FLAT PAD ON PALLET, (1) BETWEEN EACH LAYER, AND (1) ON TOP LAYER OF CONTAINERS. PLACE ALL INSPECTION AND WRITING ON THE TOP FLAT PAD TO PREVENT MARKING ON CONTAINERS PRIOR TO STRETCH WRAP.

DRAWING REVISION AA	REVISION BY SDM	REV DATE/© DATE 10/3/2022	TOLERANCES (EXCEPT AS NOTED): DEC. INCH mm ANGLE	DRAWN BY SDM	 Regal Beloit America, Inc.		
REQUEST NUMBER ECR-0221160	APPROVED BY MLS	DATE 10/3/2022	.X ±0.1 [±3] .XX ±0.01 [±0.3] .XXX ±0.005 [±0.13] .XXXX ±0.0005 [±0.013]	DATE 10/3/2022			
REQUEST NUMBER DESCRIPTION REMOVE NAMEPLATE "Fasco Industries, Inc."			REMOVE BURRS & BREAK SHARP EDGES: .003/.015 [.08/.38] X 45° CORNER FILLETS: R.02 [.5] MACHINED SURFACES: .125/ mm 3.2/ INCH mm	APPROVED BY MLS	DESCRIPTION OUTLINE MOTOR ASSY		
COPYRIGHT (PER REVISION DATE) REGAL BELOIT AMERICA, INC. ALL RIGHTS RESERVED. PROPRIETARY AND CONFIDENTIAL INFORMATION - THIS DOCUMENT IS THE PROPERTY OF REGAL BELOIT AMERICA, INC. (OWNER) AND CONTAINS OWNER'S PROPRIETARY INFORMATION. ANY PERSON, CORPORATION OR OTHER FIRM RECEIVING IT IS DEEMED, BY RECEIVING IT, TO AGREE THAT IT, AND/OR ANY PART OF IT, SHALL NOT BE DISCLOSED TO ANY PERSON, CORPORATION OR OTHER ENTITY, DUPLICATED, AND/OR USED, EXCEPT AS EXPRESSLY APPROVED IN WRITING IN ADVANCE BY OWNER. THIS DOCUMENT SHALL BE RETURNED TO OWNER UPON REQUEST. IT MAY BE SUBJECT TO CERTAIN RESTRICTIONS UNDER APPLICABLE EXPORT CONTROL LAWS AND REGULATIONS.			mm DIMENSIONS IN [BRACKETS] ARE FOR REFERENCE ONLY	DATE 10/3/2022	MATERIAL	PROCESS/FINISH BLACK	SHEET 2 OF 2
				REFERENCE	DRAWING NUMBER 71732375		
				THIRD ANGLE PROJECTION 	SIZE C		