

**MULTI-POSITION, VARIABLE-SPEED,
ECM-BASED AIR HANDLER WITH
INTERNAL EEV, COMFORTBRIDGE™
AND INVERTER COMPATIBLE
2 TO 5 TONS**



Contents

Nomenclature	2
Product Specifications	3
Dimensions	4
Airflow Data	5
Heat Kit Data.....	6
Wiring Diagram	7
Accessories	8



Product Features

- Electronic Expansion Valve (EEV) for cooling and heat pump applications.
- Variable-speed ECM blower motor
- Suitable for operation with inverter-driven products
- Integrated communicating ComfortBridge™ Technology
- Commissioning and diagnostics via on board Bluetooth with the CoolCloud™ phone and tablet application
- Provides constant CFM over a wide range of static pressure conditions independent of duct system
- CFM indicator
- Provides adjustable low CFM for efficient fan-only operation
- All-aluminum evaporator coil
- Fault recall of six most recent faults
- Improved humidity and comfort control
- 3 kW – 25 kW electric heater kits
- AHRI certified; ETL listed
- UL 60335 2-40 Compliant

Cabinet Features

- Cabinet air leakage less than 2.0% at 1.0 inch H₂O when tested in accordance with ASHRAE standard 193
- Cabinet air leakage less than 1.4% at 0.5 inch H₂O when tested in accordance with ASHRAE standard 193
- Horizontal or vertical configuration capabilities
- 21" depth for easier attic access
- DecaBDE-free thermoplastic drain pan with secondary drain connections
- Screw-less sides and back helps to reduce condensation when installed in humid locations
- Foil-faced insulation covers the internal casing to reduce cabinet condensation
- Galvanized, leather grain-embossed finish
- Glue-less cabinet insulation retention
- Tool-less filter access



COMPANY WITH
QUALITY SYSTEM
CERTIFIED BY DNV GL
= ISO 9001=

COMPANY WITH
ENVIRONMENTAL SYSTEM
CERTIFIED BY DNV GL
= ISO 14001=

* Complete warranty details available from your local dealer or at www.amana-hac.com. To receive the 10-Year Parts Limited Warranty, online registration must be completed within 60 days of installation. Online registration is not required in California or Québec. The duration of warranty coverages in Texas and Florida differs in some cases.

	A	M	V	E	2,4	B	P	1	4	00	B	A	
	1	2	3	4	5,6	7	8	9	10	11,12	13	14	
													MINOR REVISION
													MAJOR REVISION
													FACTORY INSTALLED ELECTRIC HEAT KW
													00 -NO ELECTRIC HEAT
													REFRIGERANT
													3 - R32
													4 - R4 10A
													6 R410A or R22
													ELECTRICAL
													1 208/230 V, 1 PHASE, 60 Hz
													CABINET
													N - UNCASED
													P - PAINTED
													U - UNPAINTED
													CABINET WIDTH
													AC* Series
													M - 43.25"
													L - 49.25"
													AM* Series
													B - 17.5"
													C -21.0"
													D - 24.5"
													AW* Series
													S - 20.2"
													L - 24.0"

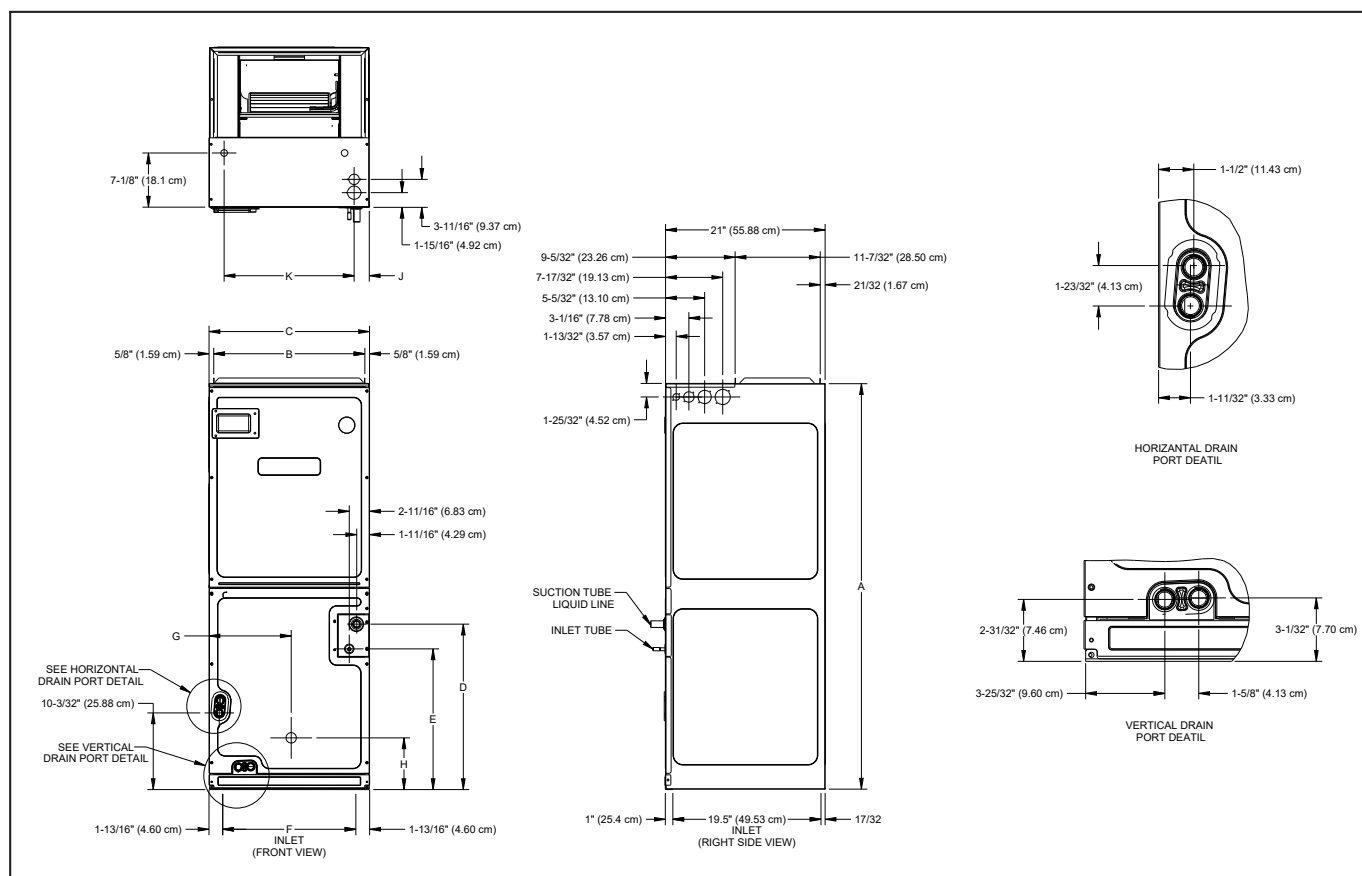
BRAND	
A - CORPORATE AIR HANDLER	
D - DAIKIN AIR HANDLER	
APPLICATION	
C - CEILING MOUNTED	
M - MULTI-POSITIONAL	
W - WALL MOUNTED	
F - FIT COMPATIBLE MULTI-POSITIONAL	
H - HORIZONTAL DISCHARGE COMPATIBLE MULTI-POSITIONAL	
MOTOR	
S - MS-ECM	
V - VS-ECM COMMUNICATING	
EXPANSION DEVICE	
E - ELECTRONIC EXPANSION VALVE	
F - FLOWRATOR	
T - THERMAL EXPANSION VALVE	
NOMINAL CAPACITY	
12 - 1.0 TON	36 - 3.0 TONS
18 - 1.5 TONS	42 - 3.5 TONS
24 - 2.0 TONS	48 - 4.0 TONS
30 - 2.5 TONS	60 - 5.0 TONS

	H	K	T	S	D	2	5	D	1	
	1	2	3	4	5	6	7	8	9	
Unit Type										
HKT - Electric Heater Kit										Electrical
										A - Single phase 208 V
										B - Single phase 240 V
										1 - Single phase 208/240 V
										3 - Three phase 208/240 V
Service Disconnect										Cabinet Size
D - Service disconnect										X - All Cabinets
N - No service disconnect										C - C Cabinet
										D - D Cabinet

*Refer S&R Plate

	AMVE24BP1400	AMVE36CP1400	AMVE48DP1400	AMVE60DP1400
NOMINAL RATINGS				
Cooling (BTU/h)	24,000	36,000	48,000	60,000
CFM (High range)	1200/600	1700/800	1800/1350	2000/1600
BLOWER				
Diameter	10 $\frac{5}{8}$ "	10 $\frac{5}{8}$ "	11 $\frac{5}{8}$ "	11 $\frac{5}{8}$ "
Width	6"	10 $\frac{5}{8}$ "	10 $\frac{5}{8}$ "	10 $\frac{5}{8}$ "
COIL CONNECTION				
Liquid	$\frac{3}{8}$ "	$\frac{3}{8}$ "	$\frac{3}{8}$ "	$\frac{3}{8}$ "
Suction	$\frac{3}{4}$ "	$\frac{7}{8}$ "	$\frac{7}{8}$ "	$\frac{7}{8}$ "
Coil Drain Connection FPT	$\frac{3}{4}$ "	$\frac{3}{4}$ "	$\frac{3}{4}$ "	$\frac{3}{4}$ "
ELECTRICAL DATA				
Voltage	208/240	208/240	208/240	208/240
Electric Heat Capacity (kW)	3, 5, 6, 8, 10	5, 6, 8, 10, 15, 19	5, 6, 8, 10, 15, 20	5, 6, 8, 10, 15, 20, 25
Min Circuit Ampacity	4.9/4.9	6.5/6.5	8.6/8.6	8.6/8.6
Max. Overcurrent Device (Amps)	15/15	15/15	15/15	15/15
Minimum VAC	197	197	197	197
Maximum VAC	253	253	253	253
BLOWER MOTOR				
Full Load Amps (FLA)	3.9	5.2	6.9	6.9
Horsepower (HP)	$\frac{1}{2}$	$\frac{3}{4}$	1	1
SHIP WEIGHT (LBS.)	128	150	160	177

Note: Minimum Circuit Ampacity (MCA) and Maximum Overcurrent Protection (MOP) for blower without supplemental heat installed. Refer to unit nameplate and/or Heat Kit Data for specification with approved accessory heaters installed.



MODEL	A	B	C	D	E	F	G	H
AMVE24BP1400	53 ⁷ / ₁₆	16 ³ / ₈	17 ¹ / ₂	20	21 ¹ / ₂	14 ⁷ / ₈	9 ⁷ / ₈	7 ⁵ / ₈
AMVE36CP1400	53 ⁷ / ₁₆	19 ⁷ / ₈	21	21 ¹³ / ₁₆	18 ⁵ / ₈	17 ¹¹ / ₁₆	10 ¹³ / ₁₆	6 ¹³ / ₁₆
AMVE48DP1400	53 ⁷ / ₁₆	23 ⁵ / ₁₆	24 ¹ / ₂	21 ¹ / ₂	18 ⁵ / ₁₆	21 ³ / ₁₆	12 ⁵ / ₈	6 ⁷ / ₈
AMVE60DP1400	58	23 ⁵ / ₁₆	24 ¹ / ₂	26 ⁷ / ₈	22 ⁷ / ₈	21 ³ / ₁₆	12 ⁵ / ₁₆	25 ⁵ / ₈

MODEL	STAGE	AIRFLOW CFM								
		0.1	0.2	0.3	0.4	0.5	0.6	0.7	0.8	0.9
AMVE24BP1400-B*	High	700	690	690	685	680	670	665	660	655
	Low	520	505	495	490	470	455	445	435	425
AMVE36CP1400-B*	High	1190	1170	1165	1160	1145	1130	1120	1105	1100
	Low	820	810	795	785	765	740	730	720	710
AMVE48DP1400-B*	High	1445	1440	1430	1415	1405	1390	1380	1375	1370
	Low	880	875	870	870	860	845	840	835	830
AMVE60DP1400-B*	High	1645	1640	1640	1635	1630	1625	1620	1620	1615
	Low	1080	1075	1070	1070	1060	1055	1050	1050	1045

Note: During cooling operation outdoor will determine the indoor airflow

COOLING/HEAT PUMP AIRFLOW TABLE

MODEL	AIRFLOW LEVEL	CFM
AMVE24BP1400-B*	High	690
	Low	495
AMVE36CP1400-B*	High	1165
	Low	795
AMVE48DP1400-B*	High	1430
	Low	870
AMVE60DP1400-B*	High	1640
	Low	1070

MODELS		CIRCUIT 1			CIRCUIT 2			SINGLE-POINT KIT	
		AMPS	MCA ¹	MOP ²	AMPS	MCA ¹	MOP ²	MCA ¹	MOP ²
AMVE24BP1400BA		0.0/0.0	4.9/4.9	15/15	---	---	---	---	---
HKTSN03X1		10.8/12.5	18.4/20.5	20/25	---	---	---	---	---
HKTSN05X1		17.3/20.0	26.5/29.9	30/30	---	---	---	---	---
HKTSN06X1	No	21.7/25.0	32.0/36.1	35/40	---	---	---	---	---
HKTSN08X1		28.9/33.3	41.0/46.5	45/50	---	---	---	---	---
HKTSN10X1		34.7/40.0	48.2/54.9	50/60	---	---	---	---	---
HKTSD05X1		17.3/20.0	26.5/29.9	30/30	---	---	---	---	---
HKTSD08X1	Yes	28.9/33.3	41.0/46.5	45/50	---	---	---	---	---
HKTSD10X1		34.7/40.0	48.2/54.9	50/60	---	---	---	---	---
AMVE36CP1400BA		0.0/0.0	6.5/6.5	15/15	---	---	---	---	---
HKTSN05X1		17.3/20.0	28.0/31.5	30/35	---	---	---	---	---
HKTSN06X1	No	21.7/25.0	34.0/37.8	35/40	---	---	---	---	---
HKTSN08X1		28.9/33.3	42.6/48.2	45/50	---	---	---	---	---
HKTSN10X1		34.7/40.0	49.8/56.5	50/60	---	---	---	---	---
HKTSN15X3 [^]		0.0/0.0	6.5/6.5	15/15	30/34.6	37.5/43	40/45	---	---
HKTSN15XA/B		34.7/40.0	49.8/56.5	50/60	17.3/20.0	21.7/25.0	25/25	71.5/81.5	80/90
HKTSD05X1	Yes	Yes	17.3/20.0	28.0/31.5	30/35	---	---	---	---
HKTSD08X1		28.9/33.3	42.6/48.2	45/50	---	---	---	---	---
HKTSD10X1		34.7/40.0	49.8/56.5	50/60	---	---	---	---	---
HKTSD19CA/B		34.7/40.0	49.8/56.5	50/60	34.7/40	43.4/50.0	45/50	93.2/106.5	100/110
AMVE48DP1400BA		0.0/0.0	8.6/8.6	15/15	---	---	---	---	---
HKTSN05X1		17.3/20.0	30.3/33.6	35/35	---	---	---	---	---
HKTSN06X1	No	21.7/25.0	37.5/40.0	40/40	---	---	---	---	---
HKTSN08X1		28.9/33.3	44.7/50.3	45/60	---	---	---	---	---
HKTSN10X1		34.7/40.0	52.0/58.6	60/60	---	---	---	---	---
HKTSD05X1		17.3/20.0	30.3/33.6	35/35	---	---	---	---	---
HKTSD08X1		28.9/33.3	44.7/50.3	45/60	---	---	---	---	---
HKTSD10X1	Yes	34.7/40.0	52.0/58.6	60/60	---	---	---	---	---
HKTSD15X3 [^]		0.0/0.0	8.6/8.6	15/15	30/34.6	38/43	40/45	---	---
HKTSD15XA/B		34.7/40.0	52.0/58.6	60/60	17.3/20.0	21.7/25.0	25/25	73.6/83.6	80/90
HKTSD20DA/B		34.7/40.0	52.0/58.6	60/60	34.7/40.0	43.3/50.0	45/50	95.3/109	100/110
AMVE60DP1400BA		0.0/0.0	8.6/8.6	15/15	---	---	---	---	---
HKTSN05X1		17.3/20.0	30.3/33.6	35/35	---	---	---	---	---
HKTSN06X1	No	21.7/25.0	37.5/40.0	40/40	---	---	---	---	---
HKTSN08X1		28.9/33.3	44.7/50.3	45/60	---	---	---	---	---
HKTSN10X1		34.7/40.0	52.0/58.6	60/60	---	---	---	---	---
HKTSD05X1		17.3/20.0	30.3/33.6	35/35	---	---	---	---	---
HKTSD08X1		28.9/33.3	44.7/50.3	45/60	---	---	---	---	---
HKTSD10X1		34.7/40.0	52.0/58.6	60/60	---	---	---	---	---
HKTSN15X3 [^]	Yes	0.0/0.0	8.6/8.6	15/15	30/34.6	38/43	40/45	---	---
HKTSN20X3 [^]		0.0/0.0	8.6/8.6	15/15	38/43.3	47/54	50/60	---	---
HKTSN15XA/B		34.7/40.0	52.0/58.6	60/60	17.3/20.0	21.7/25.0	25/25	73.6/83.6	80/90
HKTSD20DA/B		34.7/40.0	52.0/58.6	60/60	34.7/40.0	43.3/50.0	45/50	95.3/109.0	100/110
HKTSD25DA/B		52.0/60.0	73.6/83.6	80/90	35.0/40.0	43.3/50.0	45/50	117/134	125/150

¹ Minimum Circuit Ampacity (Heater Amps + Motor Amps) X 1.25

--- indicates Not Required

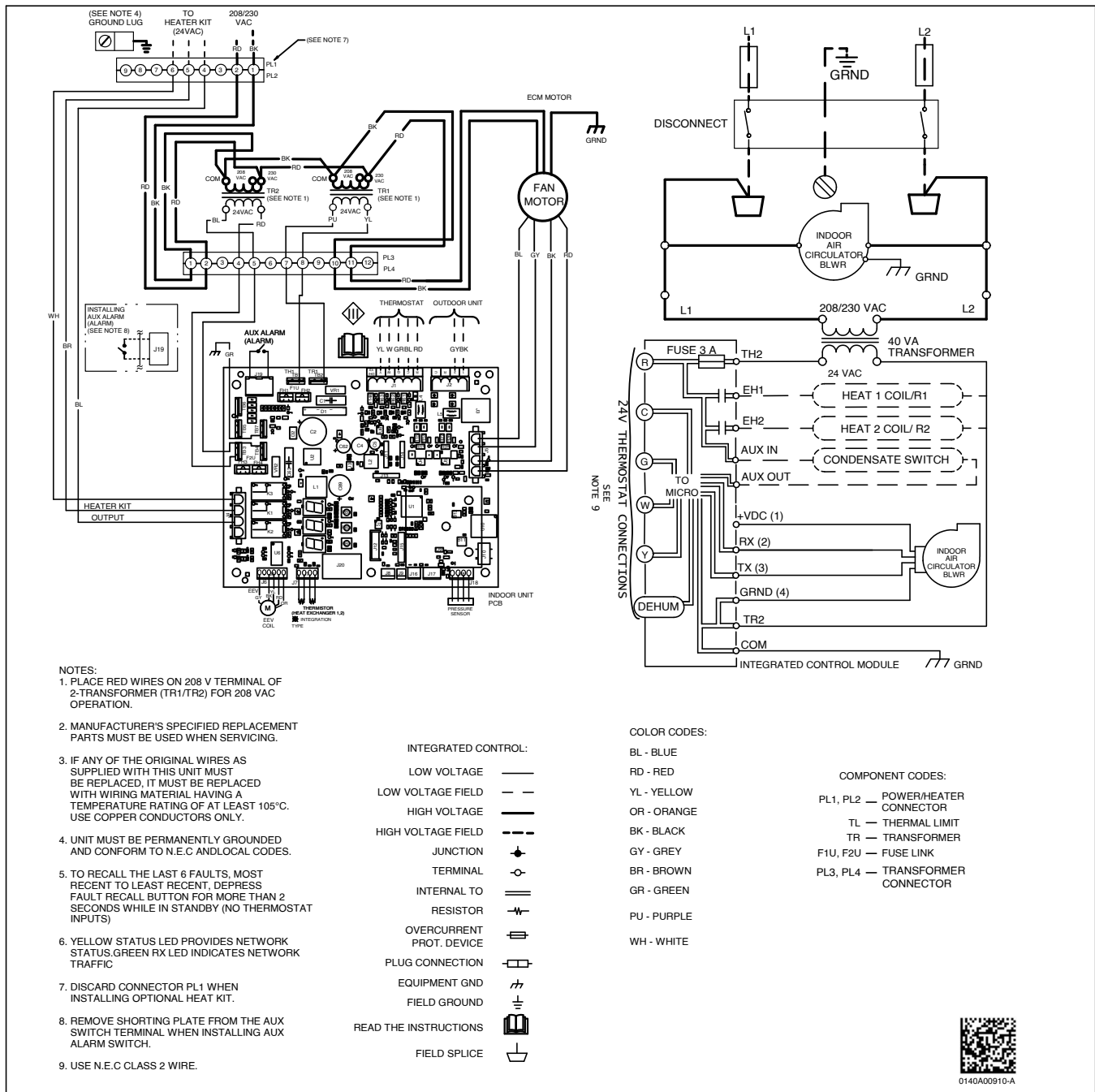
² Maximum Overcurrent Protection = 2.25 X Motor Amps + Heater Amps[^] Three-phase Heater Kits (Circuit 1: Single-phase for Air Handlers Circuit 2: Three-phase for Heater Kits)

* D - Service disconnect, N - No service disconnect

HEATING KW CORRECTION FACTOR

SUPPLY VOLTAGE	240	230	220	210	208
CORRECTION FACTOR	1.00	0.92	0.84	0.77	0.75

Multiply the 240-volt heating capacity by correction factors.



Wiring is subject to change. Always refer to the wiring diagram on the unit for the most up-to-date wiring.

⚠ WARNING

High Voltage: Disconnect all power before servicing or installing this unit. Multiple power sources may be present. Failure to do so may cause property damage, personal injury, or death.

⚡



DOWNFLOW KITS

DFK-B	DFK-C	DFK-D
AMVE24BP1400-A*	AMVE36CP1400-A*	AMVE48DP1400-A*
		AMVE60DP1400-A*

** (DFK-B, DFK-C, DFK-D) kits need to be broken up by cabinet size

DRAIN PORT PLUG

KIT NUMBER	DESCRIPTION	APPLICATION
DPK1	Side Drain Port Plug	All Models

FILTERS

CHASSIS	PART #	SIZE
B	ALFH16201E	16.0" x 20.0"
C	ALFH1912201E	19.5" x 20.0"
D	ALFH20231E	23.0" x 20.0"

SINGLE POINT KIT **

HEATER KIT MODEL	SPWK-B	SPWK-C	SPWK-D
HKTSD15XA	AMVE24BP1400**	AMVE36CP1400**	AMVE48DP1400** AMVE60DP1400**
HKTSD15XB			
HKTSD19CA		AMVE36CP1400**	
HKTSD19CB			
HKTSD20DA			AMVE48DP1400** AMVE60DP1400**
HKTSD20DB			
HKTSD25DA			AMVE60DP1400**
HKTSD25DB			

** Must be installed along with any of the above compatible heat kits. This kit will fit any AVPEC air handler as long as a compatible heat kit is installed in the unit.

[illegible]

[illegible]

[illegible]

Our continuing commitment to quality products may mean a change in specifications without notice.
© 2022 **DAIKIN COMFORT TECHNOLOGIES MANUFACTURING, L.P.** • Houston, Texas • Printed in the USA

This image shows a single sheet of white paper with horizontal ruling lines. The lines are evenly spaced and run across the width of the page. There are no margins, text, or other markings on the paper.