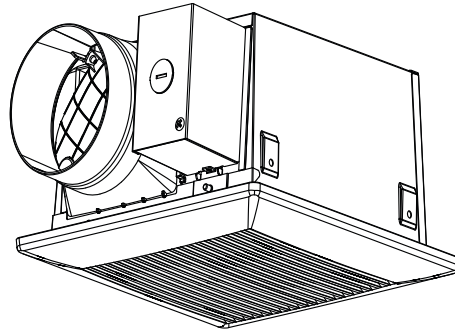


Service Manual

Ventilating Fan
(North America Market)



FV-0709VB1

! WARNING

This service information is designed for experienced repair technicians only and is not designed for use by the general public. It does not contain warnings or cautions to advise non-technical individuals of potential dangers in attempting to service a product. Products powered by electricity should be serviced or repaired only by experienced professional technicians. Any attempt to service or repair the product or products dealt with in this service information by anyone else could result in serious injury or death.

IMPORTANT SAFETY NOTICE

There are special components used in this equipment which are important for safety. These parts are marked by \triangle in the Schematic Diagrams, Exploded Views and Replacement Parts List. It is essential that these critical parts should be replaced with manufacturer's specified parts to prevent shock, fire or other hazards. Do not modify the original design without permission of manufacture. We suggest to handle such parts after the static electricity prevention. It is forbidden to touch the PCB parts by bare hands during the repairing process.

CONTENTS	PAGE
1.Specifications-----	1
2.Parts Identification-----	2,3
3.Wiring Diagram-----	4
4.Parts List-----	5

1. Specifications

FV-0709VB1

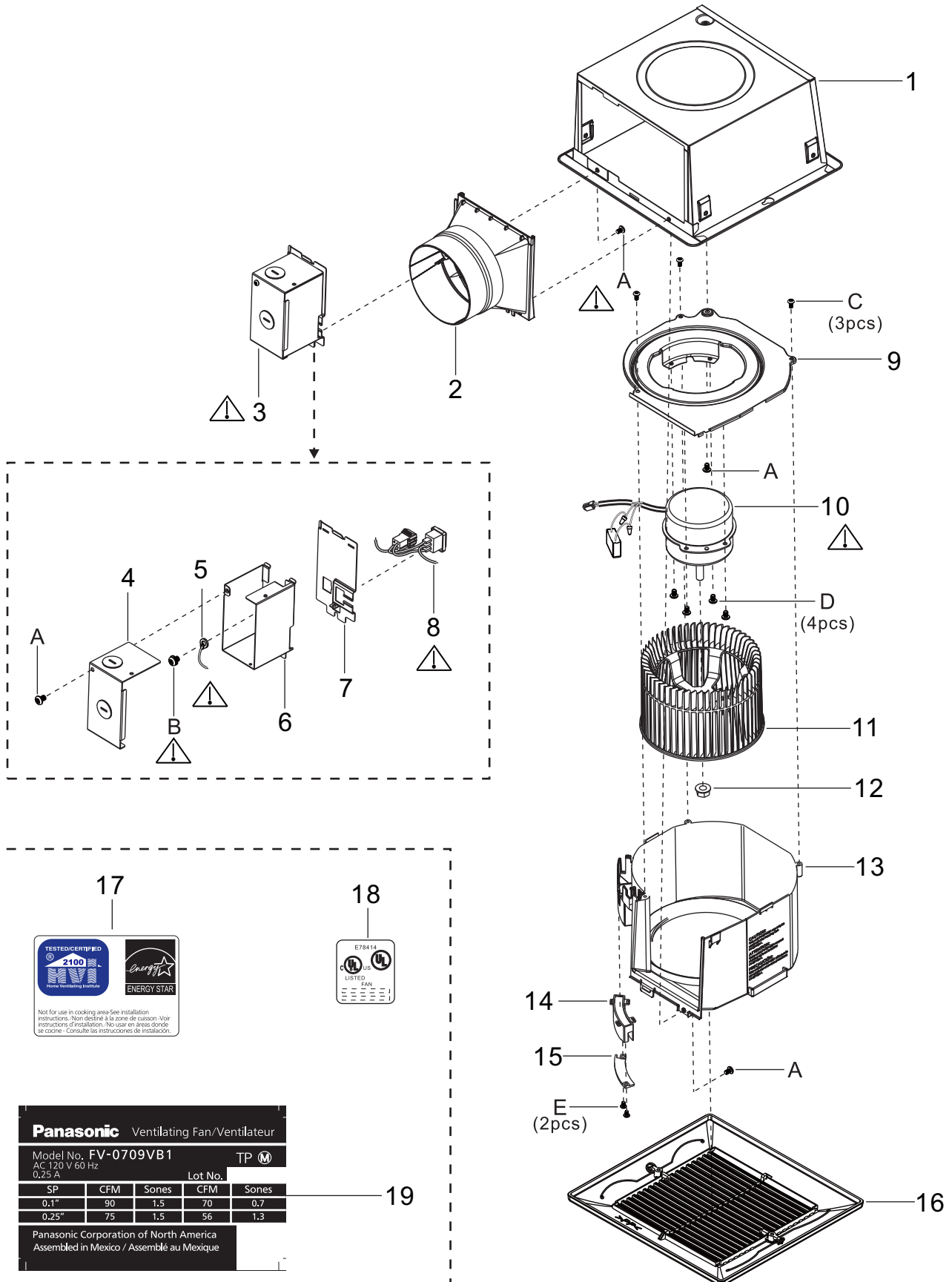
Speed	Air direction	Voltage (V)	Frequency (Hz)	Duct diameter (inches)	Air volume at 0.1" WG (CFM)	Noise (sones)	Speed (rpm)	Power consumption (W)	Weight lb. (kg)
I (Standard)	Exhaust	120	60	4	70	0.7	907	17.8	4.4/2.0
II (Boost)	Exhaust	120	60	4	90	1.5	1019	22	

HVI Certified performance based on HVI Procedures 915, 916, 920.

2. Parts Identification

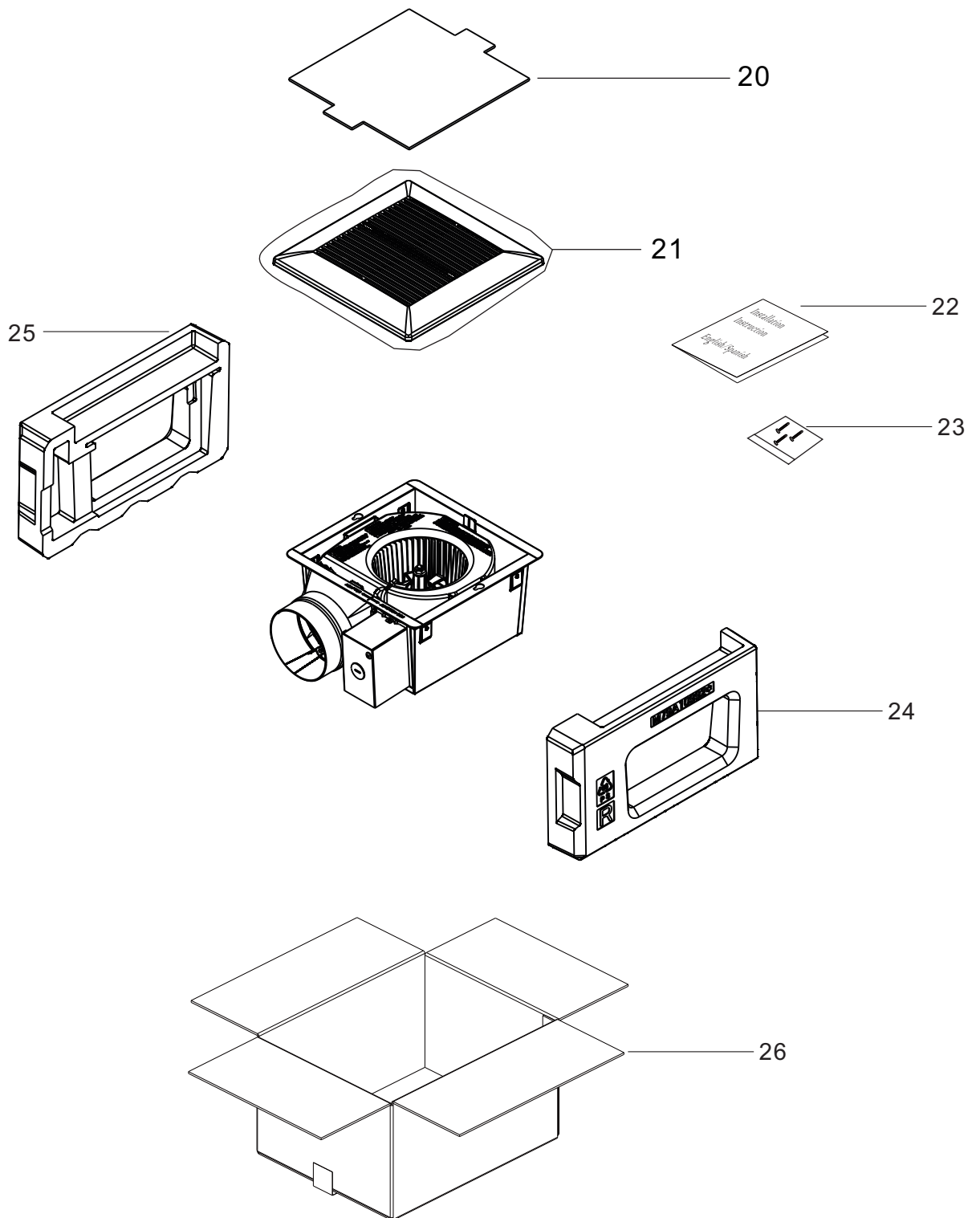
FV-0709VB1

Main Body Section



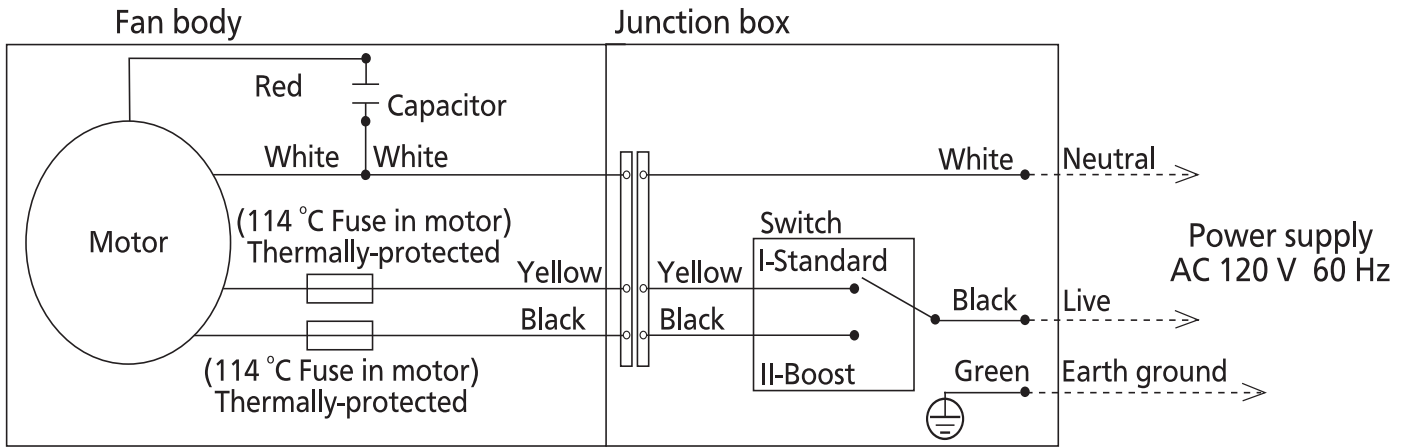
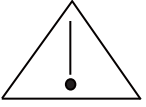
2. Parts Identification

FV-0709VB1



3. Wiring diagram

FV-0709VB1



4. Parts List

FFV-0709VB1

Main Body Section

No.	Part No.	Part Name	Q'ty	Remark
1	FFV1600147S	Frame Assembly	1	
2	FFV0000149S	Adapter Assembly	1	
3	FFV2800022S	Electric Section	1	⚠
4	FFV2800023S	Junction Cover	1	
5	FFV3450010S	Earth Lead Wire	1	⚠
6	FFV2800024S	Junction Box	1	
7	FFV0900064S	Connector Plate	1	
8	FFV0900065S	Connector Assembly	1	⚠
9	FFV3730118S	Motor Support	1	
10	FFV3730119S	Motor Unit	1	⚠
11	FFV0400116S	Blade	1	
12	FFV7020021S	Nut	1	
13	FFV0790110S	Casing	1	
14	FFV0900066S	Connector Box	1	
15	FFV0900017S	Connector Box Cover	1	
16	FFV3402169S	Grill Assembly	1	
17	FFV0810011S	Caution Label	1	
18	FFV2260003S	Holograph Label	1	
19	FFV709VB105	Name Plate	1	
A	FFVXTT4-8FFJ	Screw (ST4-8)	4	⚠
B	FFVXYM4DC8BN	Screw w/washer(M4-8)	1	⚠
C	FFV7000089S	Truss Tap Screw	3	
D	FFV7000074S	Truss Tap Screw	4	
E	FFV7000095S	Pan Tap Screw	2	

Packing Section

No.	Part No.	Part Name	Q'ty	Remark
20	FFV4710384S	Cover Pad	1	
21	FFV4650037S	Poly Cover	1	
22	FFV709VB142	Installation Instruction (EFS)	1	English / French / Spanish
23	FFV0010252S	Accessory A	1	
24	FFV79A10992	Right Pad	1	
25	FFV79A10991	Left Pad	1	
26	FFV709VB140	Packing Case	1	