



MCL HANGER

CONCENTRIC Open Web Steel Joist Hanger

M1 Hanger Cut Sheet

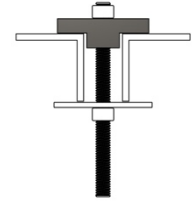
Material Code -

CSI Number 055600

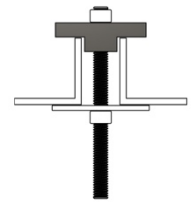
Sintered High Temp Metal

- For new construction, building upgrades, floor plan changes and maintenance.
- Use on either top or bottom cord of open web steel joist where cord gap is between .85" - 1.0875".
- Use to hang items from Unistrut or to affix Unistrut bar to an open web steel joist.
- Low narrow profile allows installation within 6" of panel points.
- Quick and easy to pre-assemble and install.
- Use any length all thread rod in 1/4", 3/8", or 1/2" diameter.
- Need heavy duty washer (2.5" diameter x 1.34" thick), all thread rod, and hex nuts for installation. Can be purchased separately through MCL Hangers.
- All parts manufactured in the United States.

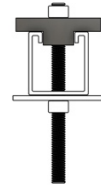
Top cord, end view



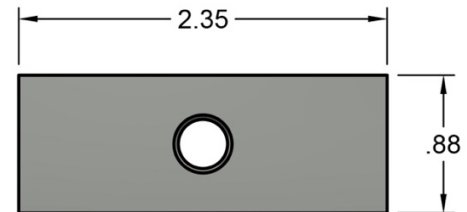
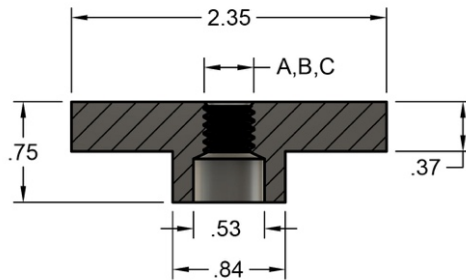
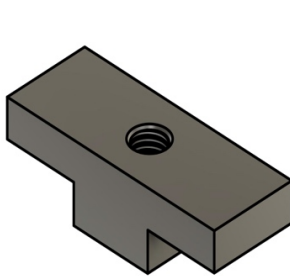
Bottom cord, end view



Unistrut, end view



MCL Hangers for 3/8" and 1/2" meets standards for safety under UL203, ULC/ORD C203 and NFPA-13 Pipe Hanger Equipment for Fire Protection Service.



Part Number	A Thread Size	Max. Pipe Size	UL Test Load (lbs.)
MM125T	1/4"	-	-
MM138T	3/8"	4"	1500
MM150T	1/2"	8"	4050



www.mclhangers.com

256-708-1315