



MCL HANGER

CONCENTRIC Open Web Steel Joist Hanger

M2 Hanger Cut Sheet

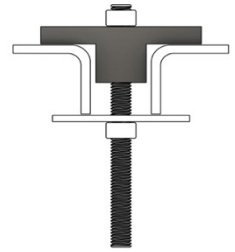
Material Code -

CSI Number 055600

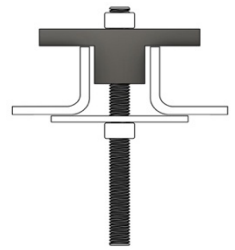
Sintered High Temp Metal

- For new construction, building upgrades, floor plan changes and maintenance.
- Use on either top or bottom cord of open web steel joist where cord gap is between .85"-1.25".
- Designed for roll formed top and bottom cords but will work on square corner cords as well. Will not work on Unistrut. (See M1 and M3 for Unistrut application.)
- Low narrow profile allows installation within 6" of panel points.
- Quick and easy to pre-assemble and install.
- Use any length all thread rod in 1/4", 3/8", or 1/2" diameter.
- Need heavy duty washer (2.5" diameter x 1.34" thick), all thread rod, and hex nuts for installation. Can be purchased separately through MCL Hangers.
- All parts manufactured in the United States.

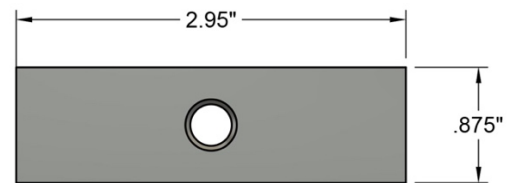
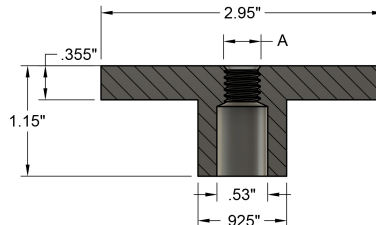
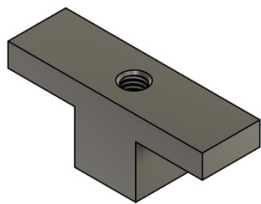
Top cord, end view



Bottom cord, end view



MCL Hangers for 3/8" and 1/2" meets standards for safety under UL203, ULC/ORD C203 and NFPA-13 Pipe Hanger Equipment for Fire Protection Service.



Part Number	A Thread Size	Max. Pipe Size	UL Test Load (lbs.)
MM225T	1/4"	-	-
MM238T	3/8"	4"	1500
MM250T	1/2"	8"	4050



www.mclhangers.com

256-708-1315