

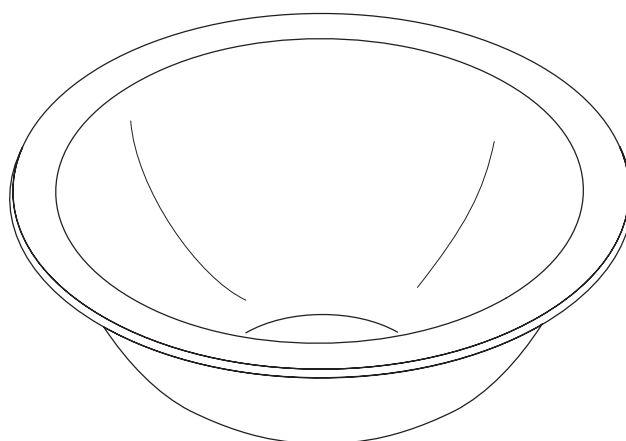
STAINLESS STEEL ROUND SINK

131-0

ALSO 141-0, 1411-0

Features

- 13-5/8" (34.6cm) diameter x 5-1/4" (13.3cm) depth
- *Choice of bright polished mirror or buffed finish*
- *Drawn from 21 gauge – Type 304 (18-8) series nickel bearing stainless steel*
- *Compact Design*
- *One piece construction*
- *Stud mounting*
- *Round flat rim*



Codes/Standards Applicable

Specified model meets or exceeds the following:

- *ANSI A112.19.3M*

Colors/Finishes

- NA None Applicable

Accessories:

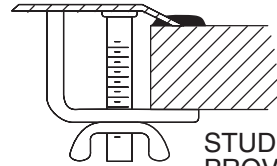
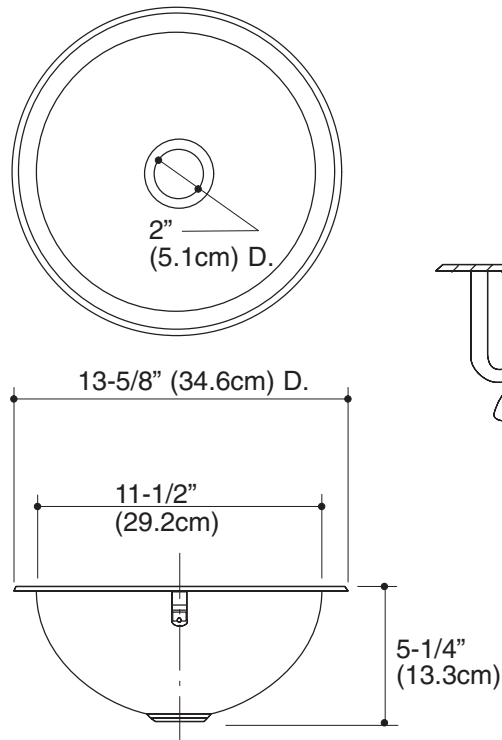
- NA None Applicable

Specified Model

Model	Description	Holes	Quantity	Basin Depth	Colors/Finishes
131-0	Buffed finish	0	8	5-1/4" (13.3cm)	<input type="checkbox"/> NA
141-0	Bright polished mirror finish	0	8	5-1/4" (13.3cm)	<input type="checkbox"/> NA
1411-0	Bright polished mirror finish	0	1	5-1/4" (13.3cm)	<input type="checkbox"/> NA

SterlingPlumbing.com

Visit us online for fixture color choices, detailed product information, color photos, installation instructions, care and cleaning guides and warranties. Sterling offers a complete line of plumbing products to complement the Sterling product you've chosen. You may also call our Sterling Plumbing Answer Center from within the U.S.A. at 1-888-STERLING in addition to consulting with your local dealer. Sterling. Strong. Professional. Design.



STUD MOUNTING
PROVIDES EASY
INSTALLATION

Product Information

Fixture*:	cutout size	basin area
Sink	12-1/2" (31.8cm) D.	11-1/2" (29.2cm) D.
Outlet	2" (5.1cm) D.	
* Approximate measurements for comparison only.		