

AP-U

Efficient
Oil-Fired
Steel Boiler



- Up to 86.2% AFUE
- 83 to 117 Net BTUs in two sizes
- Chimney vented
- Hydrolevel® boiler control
 - Energy-saving “thermal purge” feature circulates residual warm water in heating system prior to firing boiler
 - Thermal targeting economy setting
 - Circulator hold enhanced condensing protection
- Vertical firetube exchanger, 1/4” boiler-plate steel
 - Meets the ASME Boiler and Pressure Vessel Code
- Tankless coil available
- Enhanced combustion chamber seal
 - Located between shell and base, provides increased efficiency
- Designed for ease of service
 - Extended coil & fittings, removable jacket top permits access without disconnection of piping
- Lifetime limited warranty

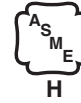
MADE IN



U . S . A .

**NEW
YORKER**
YOUR BOILER COMPANY

AP-U Technical Information

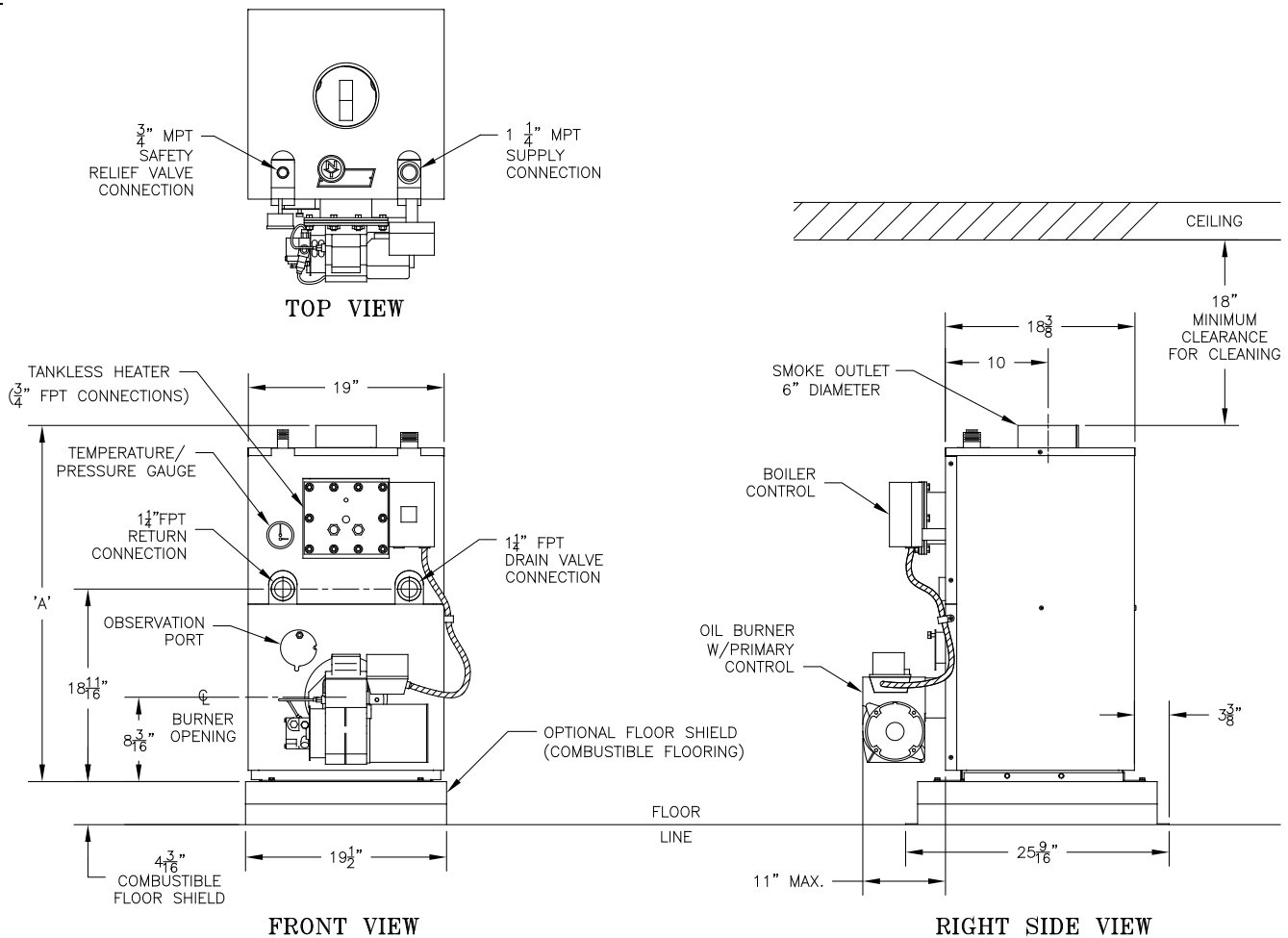


Model	Burner Capacity		DOE Heating Capacity (MBH)	AHRI Net Ratings (MBH)	Minimum Chimney Requirements			AFUE	Dim. "A" (Inches)	Water Cap. (Gallons)	Approx Ship Weight (lbs.)
	GPH	MBH			Round Inch Diameter	Rectangle In. x In.	Height Ft.				
AP-110U-(N/T)*	0.75	110	95	83	6	8 x 8	15	86.2%	34-9/16	10.1	300
AP-154U-(N/T)*	1.10	154	134	117	6	8 x 8	15	86.0%	41	15.4	355

* "N" models are equipped without tankless coil, "T" models are equipped with tankless coil

Standard Features

- Fully packaged
- Hydrostat® 3250 Plus
- 3450 RPM flame retention Beckett® oil burner
- Beckett GeniSYS® primary control
- Taco 007e® circulator
- Clean cut fuel pump
- Tridicator
- Relief valve
- Drain valve



NOTES:

- CIRCULATOR SUPPLIED LOOSE — MAY BE INSTALLED ON SUPPLY (RECOMMENDED) OR RETURN (ACCEPTABLE ALTERNATIVE) PIPING.
- RETURN FITTINGS AND DRAIN VALVE SHIPPED LOOSE.



©2023 New Yorker Boiler Company, LLC, Lancaster, PA
 info@newyorkerboiler.com
 www.newyorkerboiler.com
 PL81420051000 8/23-3Mmr

