



ROCKFORD SEPARATORS

5159 28th Ave ROCKFORD, IL 61109

(815) 229-5077 - FAX (815) 229-5108

www.rkfdseparators.com - rssem@rkfdseparators.com

MODEL NO. RGI-4000

GREASE INTERCEPTOR

DRAWN BY R.P.P.

QUOTE#:

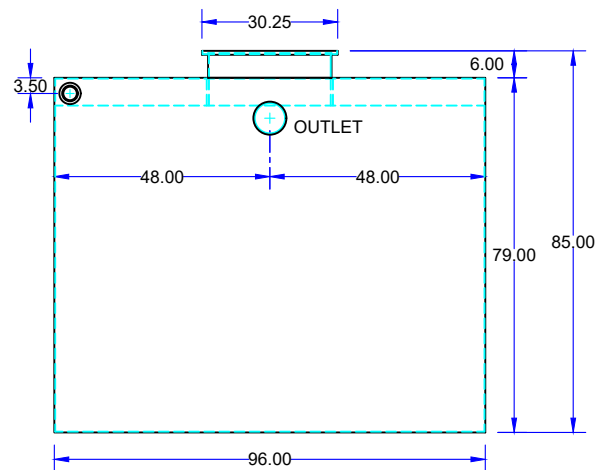
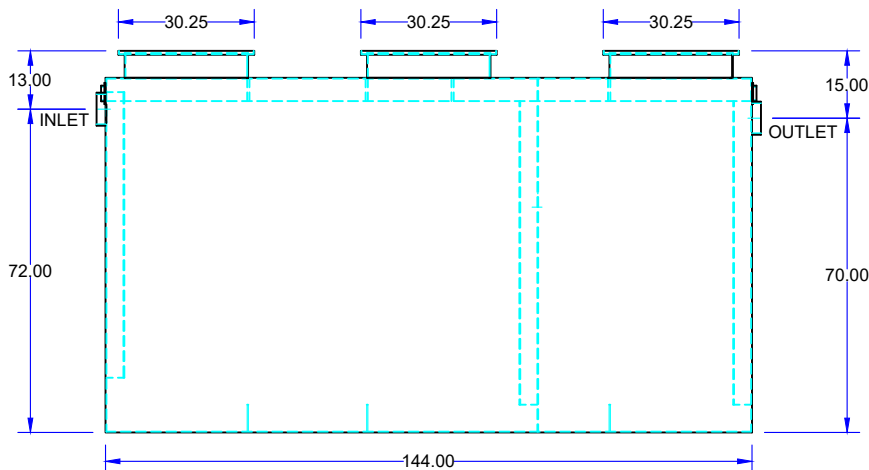
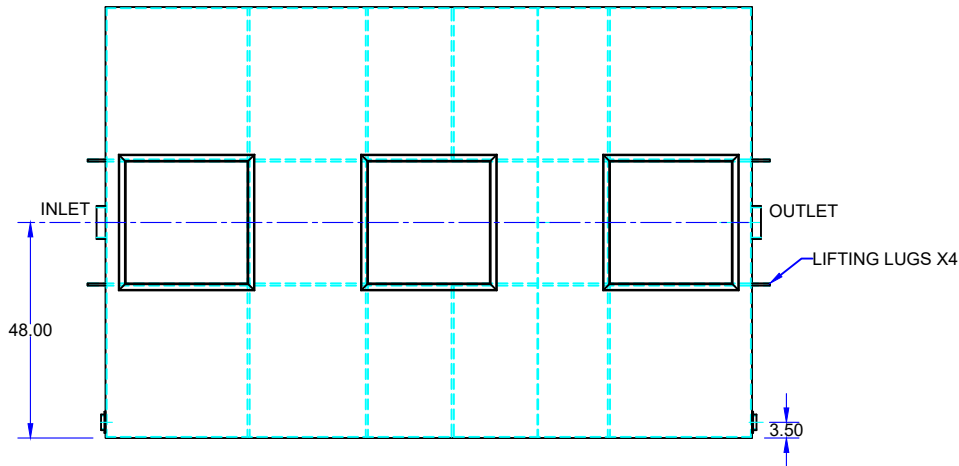
DATE: 03/01/24

JOB NAME:

OPTIONAL FEATURES (ADDITIONAL COST)

- ☐ ADDITIONAL _____ MANWAY HEIGHT REQUIRED
- ☐ INLET & OUTLET SIZE _____ INCHES
- ☐ EPOXY COATING
- ☐ STAINLESS STEEL CONSTRUCTION
- ☐ GREASE MONITOR SYSTEM
- ☐ HOLD DOWN PADS
- ☐ RECESSED LIFT HANDLES IN COVERS
- ☐ ANCHOR FLANGE

Note: Standard unit includes 6" manway base.
Additional manway height can be made to accommodate inlet invert requirements.



SPECIFICATIONS

Rockford Model RGI-4000 all welded steel gravity grease interceptor, with 2500 intermittent GPM, 4000 gallon capacity, 9,333 LBS greasy sludge capacity, 6.00" threaded inlet/outlet and 3.00" vent connections, removable 3/8" nonskid tread plate covers for flush with grade installation suitable for heavy traffic loading (H/20), secured with stainless steel flat head screws, heavy duty leak proof gasket, with bituminous coating outside. Supplied with lifting lugs X4. Approximate ship weight of 6400 Lbs.

Note: Standard unit includes 6" manway base. Additional manway height can be made to accommodate inlet invert requirements.

Units built to IAPMO/ANSI Z1001-2014 construction standard for fabricated gravity interceptors.

Optional features (Additional cost) listed above

Approved By

Company

Date