

Heavy-Duty Traffic Rated Assembled Cast Iron Handhole Body With Lid Product Specifications

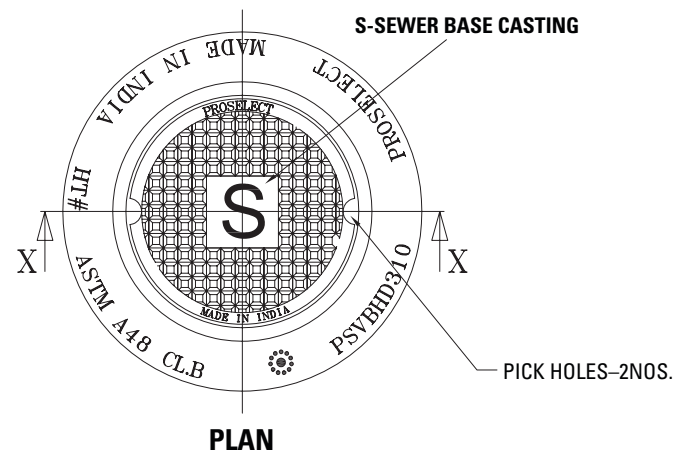
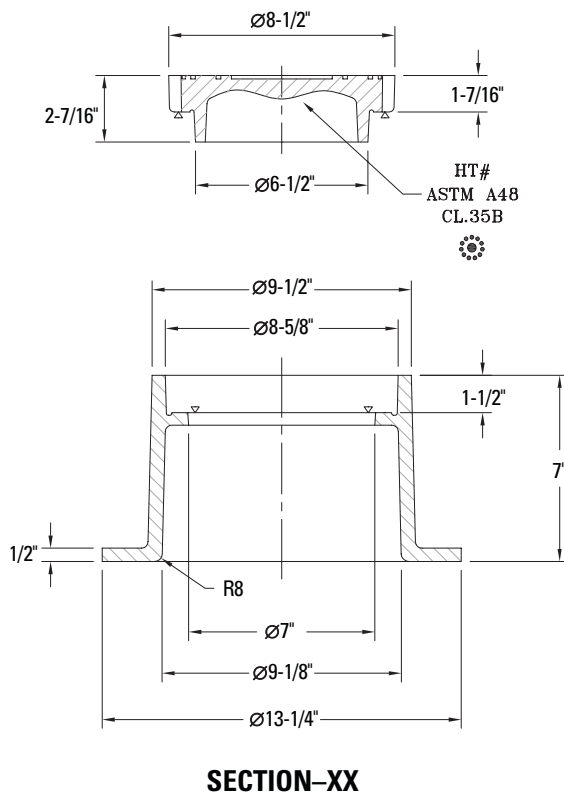
PSVBHD310

Product Features

All valve boxes and related parts shall be bare and uncoated.

Model Numbers

PSVBHD310 7" x 7" Handhole body & lid-s



Codes and Approvals

Valve boxes conform to ASTM-A48, grade 35B. Casting shall be bare and uncoated.