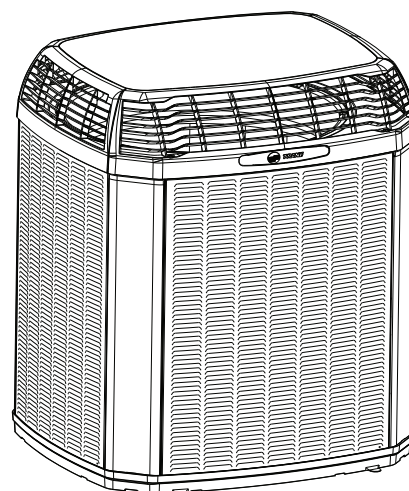




# Product Data

## Split System Heat Pump

5TWX5018A1000A  
5TWX5024A1000A  
5TWX5030A1000A  
5TWX5036A1000A  
5TWX5042A1000A  
5TWX5048A1000A  
5TWX5060A1000A



**Note:** "Graphics in this document are for representation only. Actual model may differ in appearance."



# Product Specifications

Model No. <sup>(a)</sup>	5TWX5018A1000A	5TWX5024A1000A	5TWX5030A1000A	5TWX5036A1000A
POWER CONNS. – V/PH/HZ <sup>(b)</sup>	208/230/1/60	208/230/1/60	208/230/1/60	208/230/1/60
MIN. BRCH. CIR. AMPACITY	12	13	16	19
BR. CIR. PROT. RTG. – MAX. (AMPS)	20	20	25	30
COMPRESSOR	CLIMATUFF® - SCROLL	CLIMATUFF® - SCROLL	CLIMATUFF® - SCROLL	CLIMATUFF® - SCROLL
RL AMPS – LR AMPS	7.8 - 47.5	9.1 - 75.9	10.4 - 71.0	13.5/75
Outdoor Fan FL AMPS	0.64	0.64	0.64	0.64
Fan HP	1/8	1/8	1/8	1/8
Fan Dia (inches)	23	23	23	27.5
Coil	SPINE FIN™	SPINE FIN™	SPINE FIN™	SPINE FIN™
Refrigerant R-454B	4 LBS., 12 OZ	4 LBS., 10 OZ	4 LBS., 10 OZ	5 LBS., 10 OZ
LINE SIZE – IN. O.D. GAS <sup>(c) (d)</sup>	3/4	3/4	3/4	3/4
LINE SIZE – IN. O.D. LIQ.	5/16	5/16	5/16	5/16
Charge Spec. Subcooling	9°F	12°F	12°F	10°F
Dimensions H x W X D Crated (IN.)	42.9 x 30 x 33	42.9 x 30 x 33	42.9 x 30 x 33	43.8 x 35 x 37.9
Weight – Shipping (lbs.)	218	218	218	266
Weight – Net (lbs.)	184	184	184	232
<b>Optional Accessories:</b>				
Anti-short Cycle Timer	TAYASCT501A	TAYASCT501A	TAYASCT501A	TAYASCT501A
Evaporator Defrost Control	NA	NA	NA	NA
Rubber Isolator Kit	BAYISLT101	BAYISLT101	BAYISLT101	BAYISLT101
Extreme Condition Mount Kit	BAYECMT023	BAYECMT023	BAYECMT004	BAYECMT004
Start Kit	–	–	BAYKSKT263	BAYKSKT263
Crankcase Heater Kit	BAYCCHT302	BAYCCHT302	BAYCCHT302	BAYCCHT302
Seacoast Kit	BAYSEAC001	BAYSEAC001	BAYSEAC001	BAYSEAC001
Low Ambient Kit	BAYLOAM107	BAYLOAM107	BAYLOAM107	BAYLOAM107
Refrigerant Lineset <sup>(e)</sup>				

<sup>(a)</sup> Certified in accordance with the Unitary Air-conditioner equipment certification program which is based on AHRI standard 210/240.

<sup>(b)</sup> Calculated in accordance with N.E.C. Only use HACR circuit breakers or fuses.

<sup>(c)</sup> Reference the outdoor unit ship-with literature for refrigerant piping length and lift guidelines. Reference the refrigerant piping software pub # 32-3312-xx or refrigerant piping application guide SS-APG006-xx for long line sets or specialty applications (xx denotes latest revision).

<sup>(d)</sup> The outdoor condensing units are factory charged with the system charge required for the outdoor condensing unit, ten (10) feet of tested connecting line, and the smallest rated indoor evaporative coil match. Always verify proper system charge via subcooling (TXV/EEV) or superheat (fixed orifice) per the unit nameplate.

<sup>(e)</sup> 25, 30, 35 and 50 foot linesets available. For a complete listing of lineset options available from equipment or supply stores, refer to the Trane Residential and Light Commercial Product Handbook.

## Product Specifications

Model No. <sup>(a)</sup>	5TWX5042A1000A	5TWX5048A1000A	5TWX5060A1000A
POWER CONNS. – V/PH/HZ <sup>(b)</sup>	280/230/1/60	280/230/1/60	280/230/1/60
MIN. BRCH. CIR. AMPACITY	24	25	33
BR. CIR. PROT. RTG. – MAX. (AMPS)	40	40	50
COMPRESSOR	CLIMATUFF® - SCROLL	CLIMATUFF® - SCROLL	CLIMATUFF® - SCROLL
RL AMPS – LR AMPS	16.9 - 104.7	18.1 - 95.0	22.3 - 136.6
Outdoor Fan FL AMPS	2.80	2.80	2.80
Fan HP	1/3	1/3	1/3
Fan Dia (inches)	27.5	27.5	27.5
Coil	SPINE FIN™	SPINE FIN™	SPINE FIN™
Refrigerant R-454B	7 LBS., 14 OZ	8 LBS., 9 OZ	8 LBS., 6 OZ
LINE SIZE – IN. O.D. GAS <sup>(c) (d)</sup>	7/8	7/8	7/8
LINE SIZE – IN. O.D. LIQ.	5/16	5/16	5/16
Charge Spec. Subcooling	10°F	10°F	10°F
Dimensions H x W x D Crated (IN.)	55.8 x 35 x 37.9	55.8 x 35 x 37.9	55.8 x 35 x 37.9
Weight – Shipping (lbs.)	311	311	311
Weight – Net (lbs.)	261	261	261
<b>Optional Accessories:</b>			
Anti-short Cycle Timer	TAYASCT501A	TAYASCT501A	TAYASCT501A
Evaporator Defrost Control	NA	NA	NA
Rubber Isolator Kit	BAYISLT101	BAYISLT101	BAYISLT101
Extreme Condition Mount Kit	BAYECMT004	BAYECMT004	BAYECMT004
Start Kit	BAYKSKT263	BAYKSKT263	BAYKSKT263
Crankcase Heater Kit	BAYCCHT301	BAYCCHT301	BAYCCHT301
Seacoast Kit	BAYSEAC001	BAYSEAC001	BAYSEAC001
Low Ambient Kit	BAYLOAM103	BAYLOAM103	BAYLOAM103
Refrigerant Lineset <sup>(e)</sup>			

<sup>(a)</sup> Certified in accordance with the Unitary Air-conditioner equipment certification program which is based on AHRI standard 210/240.

<sup>(b)</sup> Calculated in accordance with N.E.C. Only use HACR circuit breakers or fuses.

<sup>(c)</sup> Reference the outdoor unit ship-with literature for refrigerant piping length and lift guidelines. Reference the refrigerant piping software pub # 32-3312-xx or refrigerant piping application guide SS-APG006-xx for long line sets or specialty applications (xx denotes latest revision).

<sup>(d)</sup> The outdoor condensing units are factory charged with the system charge required for the outdoor condensing unit, ten (10) feet of tested connecting line, and the smallest rated indoor evaporative coil match. Always verify proper system charge via subcooling (TXV/EEV) or superheat (fixed orifice) per the unit nameplate.

<sup>(e)</sup> 25, 30, 35 and 50 foot linesets available. For a complete listing of lineset options available from equipment or supply stores, refer to the Trane Residential and Light Commercial Product Handbook.



# Sound Power Level

Sound Power Level									
MODEL	A-Weighted Sound Power Level [dB (A)]	Full Octave Sound Power(dB)							
		63 Hz*	125 Hz	250 Hz	500 Hz	1000 Hz	2000 Hz	4000 Hz	8000 Hz
5TWX5018A	71	77	72	68	68	69	60	53	47
5TWX5024A	71	77	72	68	68	69	60	53	47
5TWX5030A	71	77	72	68	68	69	60	53	47
5TWX5036A	70	75	69	68	68	66	62	57	51
5TWX5042A	72	77	75	72	70	67	62	59	52
5TWX5048A	72	77	75	72	70	67	62	59	52
5TWX5060A	72	77	75	72	70	67	62	59	52
Note: Rated in accordance with AHRI Standard 270-2008 *For Reference Only									



## Accessory Description and Usage

**Anti-Short Cycle Timer** — Solid state timing device that prevents compressor recycling until five (5) minutes have elapsed after satisfying call or power interruptions. Use in area with questionable power delivery, commercial applications, long lineset, etc.

**Evaporation Defrost Control** — SPST Temperature actuated switch that cycles the condenser off as indoor coil reaches freeze-up conditions. Used for low ambient cooling to 30°F with TXV.

**Rubber Isolators** — Five (5) large rubber donuts to isolate condensing unit from transmitting energy into mounting frame or pad. Use on any application where sound transmission needs to be minimized.

**Hard Start Kit** — Start capacitor and relay to assist compressor motor startup. Use in areas with marginal power supply, on long linesets, low ambient conditions, etc.

**Extreme Condition Mount Kit** — Bracket kits to securely mount condensing unit to a frame or pad without removing any panels. Use in areas with high winds, or on commercial roof tops, etc.

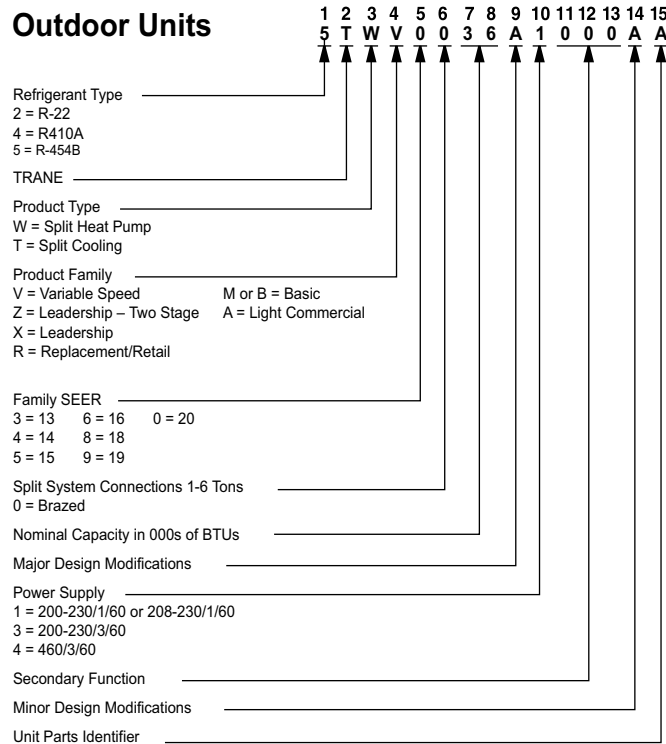
### AHRI Standard Capacity Rating Conditions

AHRI Standard 210/240 Rating Conditions

1. Cooling 80°F DB, 67°F WB air entering indoor coil, 95°F DB air entering outdoor coil.
2. High Temperature Heating 47°F DB, 43°F WB air entering outdoor coil, 70°F DB air entering indoor coil.
3. Low Temperature Heating 17°F DB air entering indoor coil.
4. Rated indoor airflow for heating is the same as for cooling.

**AHRI Standard 270 Rating Conditions** — (Noise rating numbers are determined with the unit in cooling operations.) Standard Noise Rating number is at 95°F outdoor air.

## Model Nomenclature



[illegible]

[illegible]

PRINTED FROM DI59478P02 REV B



## Wiring Diagrams

### NOTES:

1. BE SURE POWER SUPPLY AGREES WITH EQUIPMENT NAMEPLATE.
2. POWER WIRING AND GROUNDING OF EQUIPMENT MUST COMPLY WITH LOCAL CODES
3. LOW VOLTAGE WIRING TO BE NO. 18 AWG MINIMUM CONDUCTOR.
4. ODT-B MUST BE SET LOWER THAN ODT-A
5. IF ODT-A IS NOT USED, ADD JUMPER BETWEEN W1 AND W2 AT AIR HANDLER
- ▲ 6. THE GROUND CONNECTIONS SHOWN HERE ARE 2 SEPARATE WIRES, DO NOT CRIMP TOGETHER  
"GR/YL 1" WIRE IS FOR GROUND LUG AND " GR/YL 2" IS FOR GROUND WIRE/WIRE NUT OPTION.

### NOTE:

MATERIAL: WHITE POLYPROPYLENE SUITABLE FOR USE IN OUTDOOR ENVIRONMENT.

ADHESIVE: PRESSURE SENSITIVE ADHESIVE WITH RELEASE PAPER SUITABLE FOR  
OUTDOOR APPLICATION ON PAINTED OR GALVANIZED SHEET METAL SURFACES.

SIZE: 6 1/4" X 11"

# LEGEND

— 24 V } FACTORY  
LINE } WIRING  
— 24 V } FIELD  
LINE } WIRING  
- - - - - FIELD INSTALLED  
FACTORY WIRING

— MAGNETIC COIL

— GROUND

• JUNCTION

— CAPACITOR

△ WIRE NUT OR

○ TERMINAL

— TRANSFORMER

— FUSE

□ TERMINAL BLOCK/BOARD

ACR A/C RECTIFIER

CBS COIL BOTTOM SENSOR

CF FAN CAPACITOR

CN WIRE CONNECTOR

CPR COMPRESSOR

CR RUN CAPACITOR

CS STARTING CAPACITOR

CSR CAPACITOR SWITCHING RELAY

DFC DEFROST CONTROL

EEV ELECTRONIC EXP VALVE

EEVC ELECTRONIC EXP VALVE CONTROL

F INDOOR FAN RELAY

— RELAY CONTACT (N.O)

— RELAY CONTACT (N.C)

— THERMISTOR

— TEMP ACTUATED SWITCH

— INTERNAL OVERLOAD PROTECTION

— PRESSURE ACTUATED SWITCH

— RESISTOR OR HEATING ELEMENT

— MOTOR WINDING

— POL. PLUG FEMALE HOUSING  
(MALE TERMINALS)

— POL. PLUG MALE HOUSING  
(FEMALE TERMINALS)

— SINGLE INLINE CONNECTION

SC SWITCH OVER VALVE SOLENOID

SM SYSTEM ON-OFF SWITCH

TDL DISCHARGE LINE THERMOSTAT

TDR TIME DELAY RELAY (5 SEC DELAY ON)

TNS TRANSFORMER

TEMP SENSOR, TEMPERATURE

Y2C HIGH CAPACITY CONTROL RELAY

— COLOR OF WIRE  
BK/BL  
— COLOR OF MARKER

BK BLACK RD RED OR ORANGE  
BL BLUE WH WHITE GR GREEN  
BR BROWN YL YELLOW PR PURPLE  
PK PINK

HPCO HIGH PRESSURE CUTOFF SWITCH  
IOL INTERNAL OVERLOAD PROTECTOR  
LPCO LOW PRESSURE CUTOFF SWITCH  
MS COMPRESSOR MOTOR CONTACTOR  
ODA OUTDOOR ANTICIPATOR  
OFT OUTDOOR FAN THERMOSTAT  
ODS OUTDOOR TEMPERATURE SENSOR  
ODT OUTDOOR THERMOSTAT  
P-TRD PRESSURE TRANSDUCER

FOR CANADIAN INSTALLATIONS  
POUR INSTALLATIONS CANADIENNES

CAUTION: NOT SUITABLE FOR USE ON  
SYSTEMS EXCEEDING 150V-TO-GROUND  
ATTENTION: NE CONVIENT PAS AUX  
INSTALLATIONS DE PLUS DE 150 V A  
LA TERRE

## CAUTION

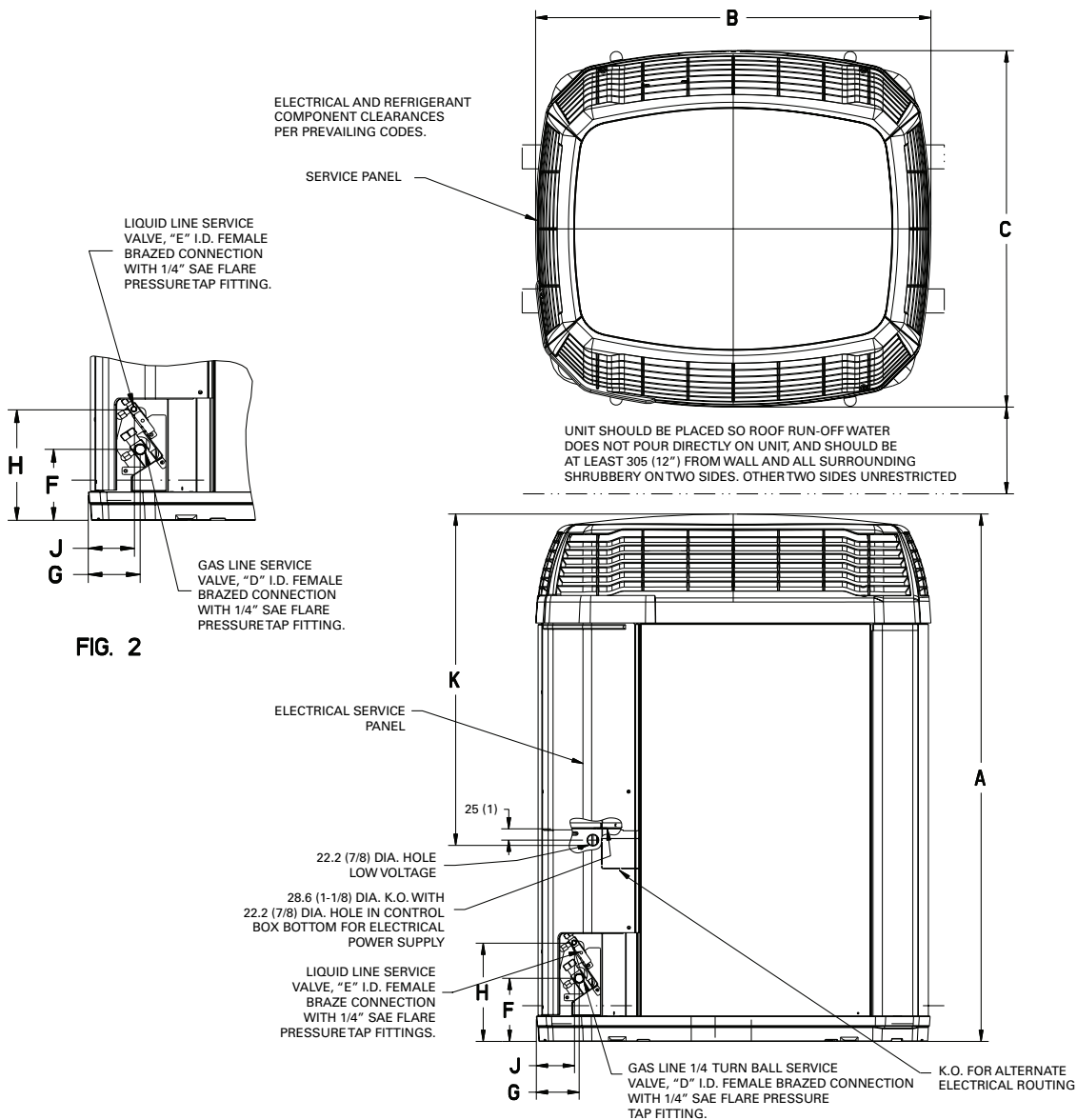
USE COPPER CONDUCTORS ONLY!  
UNIT TERMINALS ARE NOT DESIGNED  
TO ACCEPT OTHER TYPES OF CONDUCTORS.  
Failure to do so may cause damage  
to the equipment.

## WARNING

HAZARDOUS VOLTAGE!  
DISCONNECT ALL ELECTRICAL POWER  
INCLUDING REMOTE DISCONNECTS  
BEFORE SERVICING.  
FAILURE TO DISCONNECT POWER  
BEFORE SERVICING CAN CAUSE SEVERE  
PERSONAL INJURY OR DEATH.



# Outline Drawing



**FIG. 1**

Model	Base	A	B	C	D	E	F	G	H	J	K
5TWX5018A	3	975.106 (38.39)	829 (32-5/8)	756 (29-3/4)	3/4	5/16	143 (5-5/8)	92 (3-5/8)	210 (8-1/4)	79 (3-1/8)	651.106 (25.64)
5TWX5024A	3	975.106 (38.39)	829 (32-5/8)	756 (29-3/4)	3/4	5/16	143 (5-5/8)	92 (3-5/8)	210 (8-1/4)	79 (3-1/8)	651.106 (25.64)
5TWX5030A	3	975.106 (38.39)	829 (32-5/8)	756 (29-3/4)	3/4	5/16	143 (5-5/8)	92 (3-5/8)	210 (8-1/4)	79 (3-1/8)	651.106 (25.64)
5TWX5036A	4	1103.024 (43.435)	946 (37-1/4)	870 (34-1/4)	3/4	5/16	152 (6)	98 (3-7/8)	219 (8-5/8)	86 (3-3/8)	668.024 (26.31)
5TWX5042A	4	1307.024 (51.435)	946 (37-1/4)	870 (34-1/4)	7/8	5/16	152 (6)	98 (3-7/8)	219 (8-5/8)	86 (3-3/8)	668.024 (26.31)
5TWX5048A	4	1307.024 (51.435)	946 (37-1/4)	870 (34-1/4)	7/8	5/16	152 (6)	98 (3-7/8)	219 (8-5/8)	86 (3-3/8)	668.024 (26.31)
5TWX5060A	4	1307.024 (51.435)	946 (37-1/4)	870 (34-1/4)	7/8	5/16	152 (6)	98 (3-7/8)	219 (8-5/8)	86 (3-3/8)	668.024 (26.31)



# Mechanical Specification Options

## General

The outdoor condensing units are factory charged with the system charge required for the outdoor condensing unit, ten (10) feet of tested connecting line, and the smallest rated indoor evaporative coil match. This unit is designed to operate at outdoor ambient temperatures as high as 115°F. Cooling capacities are matched with a wide selection of air handlers and furnace coils that are AHRI certified. The unit is certified to UL 60335-2-40. Exterior is designed for outdoor application.

## Casing

Unit casing is constructed of heavy gauge, galvanized steel and painted with a weather-resistant powder paint finish. The corner panels are prepainted. All panels are subjected to our 1,000 hour salt spray test.

## Refrigerant Controls

Refrigeration system controls include condenser fan, compressor contactor and low and high pressure switches. A factory supplied, field installed liquid line drier is standard.

## Compressor

The compressor features internal over temperature and pressure protection. Other features include: Centrifugal oil pump and low vibration and noise.

## Condenser Coil

The outdoor coil provides low airflow resistance and efficient heat transfer. The coil is protected on all four sides by louvered panels.

## Low Ambient Cooling

As manufactured, this system has a cooling capacity to 55°F. The addition of an evaporator defrost control permits operation to 40°F. The addition of an evaporator defrost control with TXV permits low ambient cooling to 30°F.

The addition of the BAYLOAM107A low ambient kit permits ambient cooling to 20°F.

**Thermostats** – Cooling only and heat/cooling (manual and automatic change over). Sub-base to match thermostat and locking thermostat cover.





Trane - by Trane Technologies (NYSE: TT), a global innovator - creates comfortable, energy efficient indoor environments for commercial and residential applications. For more information, please visit [trane.com](http://trane.com) or [tranetechnologies.com](http://tranetechnologies.com).

---



The AHRI Certified mark indicates Trane U.S. Inc. participation in the AHRI Certification program. For verification of individual certified products, go to [ahridirectory.org](http://ahridirectory.org).

Trane has a policy of continuous data improvement and it reserves the right to change design and specifications without notice. We are committed to using environmentally conscious print practices.