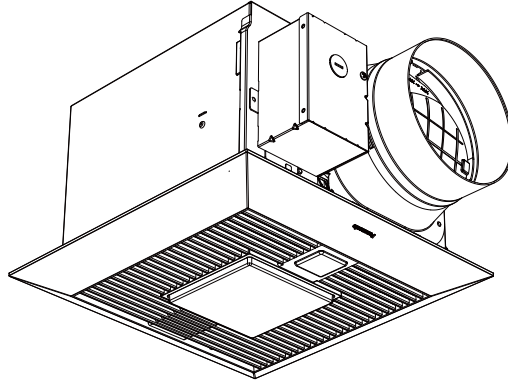


Service Manual

Ventilating Fan
(North America Market)



FV-1115VKL3

⚠ WARNING

This service information is designed for experienced repair technicians only and is not designed for use by the general public. It does not contain warnings or cautions to advise non-technical individuals of potential dangers in attempting to service a product. Products powered by electricity should be serviced or repaired only by experienced professional technicians. Any attempt to service or repair the product or products dealt with in this service information by anyone else could result in serious injury or death.

IMPORTANT SAFETY NOTICE

There are special components used in this equipment which are important for safety. These parts are marked by ⚠ in the Schematic Diagrams, Exploded Views and Replacement Parts List. It is essential that these critical parts should be replaced with manufacturer's specified parts to prevent shock, fire or other hazards. Do not modify the original design without the manufacturer's approval. Please have a static electricity depletion process in place before handling these components.. Please use gloves when handling PCB parts during the repair process..

| CONTENTS | PAGE |
|-----------------------------|-------|
| 1.Specification----- | 1 |
| 2.Parts Identification----- | 2 ~ 5 |
| 3.Wiring Diagram----- | 6 |
| 4.Parts List----- | 7, 8 |

1. Specification

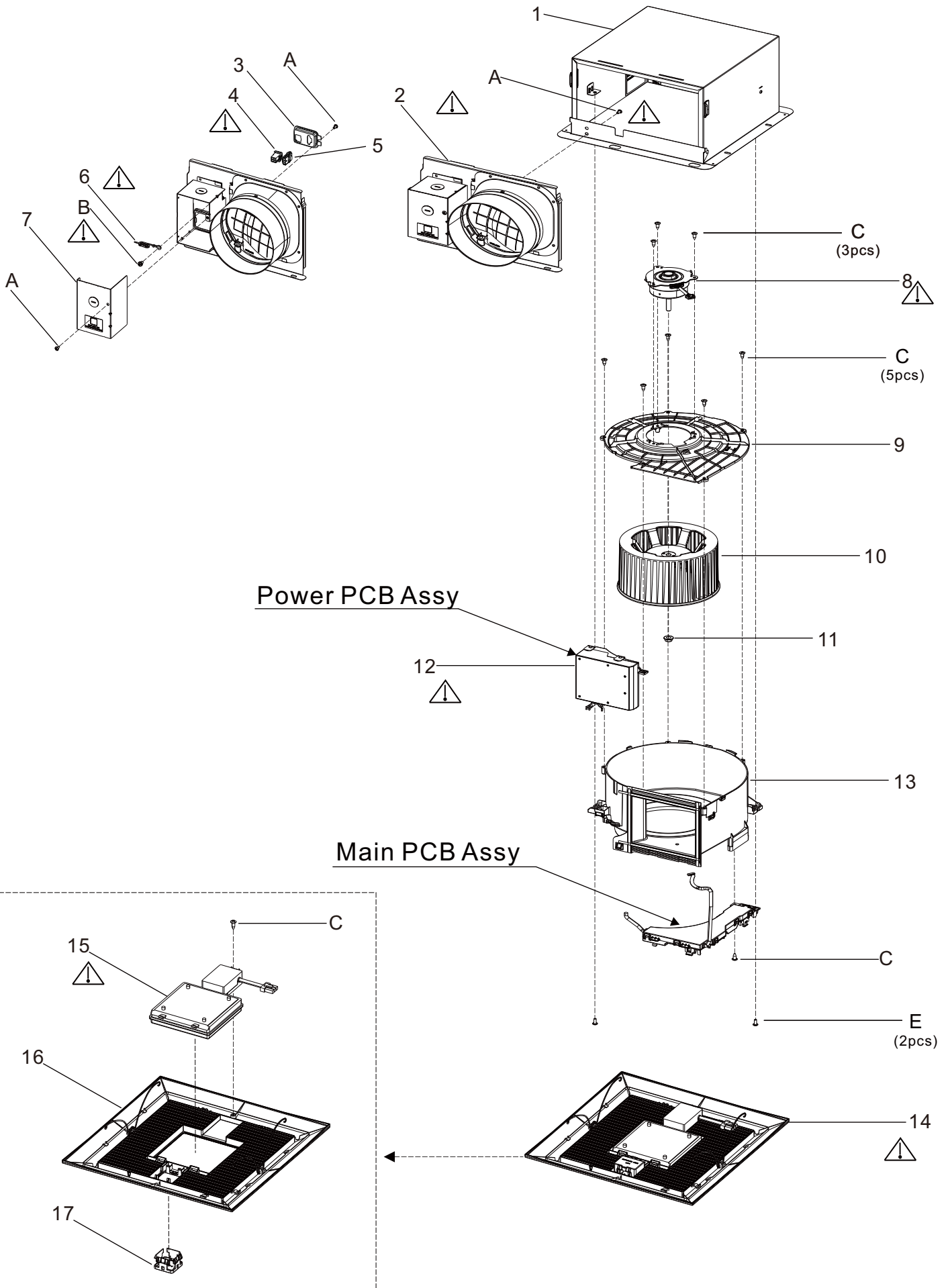
| Model No. | Air direction | Voltage (V) | Frequency (Hz) | Duct diameter (inches) | Air volume at 0.1"WG (CFM) | Noise (sones) | Speed (rpm) | Power (W) | | Weight lb.(kg) |
|-------------|---------------|-------------|----------------|------------------------|----------------------------|---------------|-------------|-----------|------------------------|-----------------|
| | | | | | | | | Fan | Lighting / Night Light | |
| FV-1115VKL3 | Exhaust | 120 | 60 | 6 | 150 | 0.4 | 724 | 12.6 | 10 / 0.2 | 7.85 (3.56) |
| | | | | | 130 | <0.3 | 681 | 9.7 | | |
| | | | | | 110 | <0.3 | 636 | 7.2 | | |
| | | | | | 120 | <0.3 | 660 | 8.1 | | |
| | | | | | 110 | <0.3 | 636 | 7.2 | | |
| | | | | | 100 | <0.3 | 621 | 6.0 | | |
| | | | | | 90 | <0.3 | 605 | 5.3 | | |
| | | | | | 80 | <0.3 | 591 | 4.6 | | |
| | | | | | 70 | <0.3 | 588 | 4.2 | | |
| | | | | | 60 | <0.3 | 595 | 3.9 | | |
| | | | | | 50 | <0.3 | 587 | 3.5 | | |
| 0 | - | - | 1.0(*) | | | | | | | |

HVI Certified performance based on HVI Procedures 915, 916, and 920.

2. Parts Identification

FV-1115VKL3

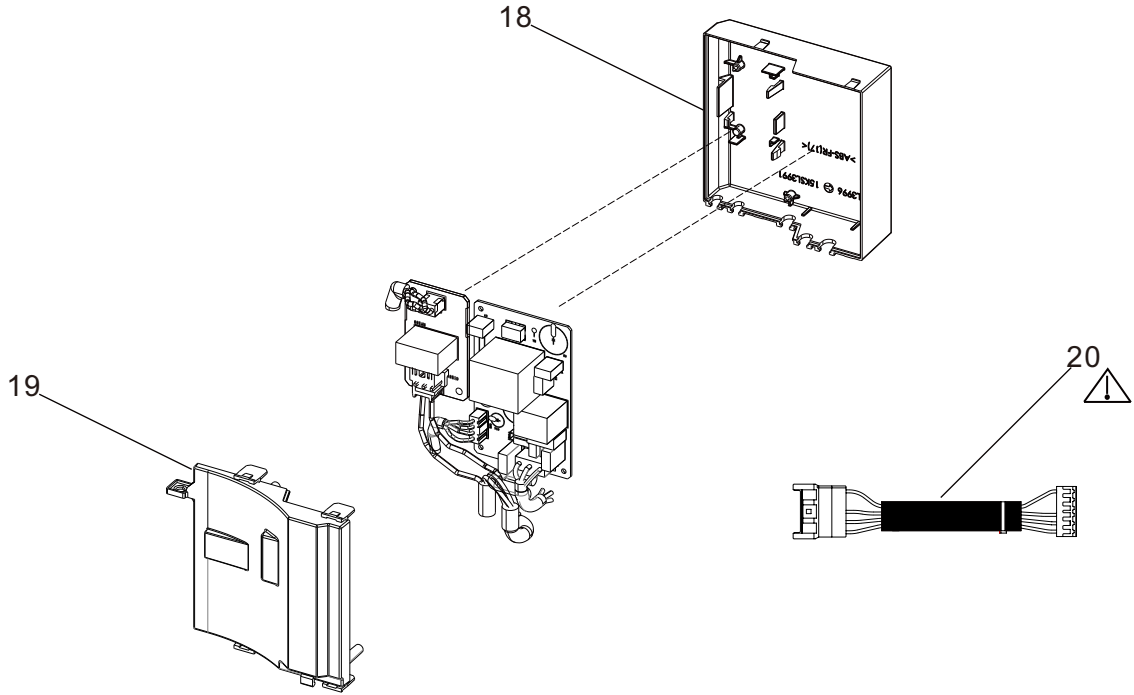
Main Body Section



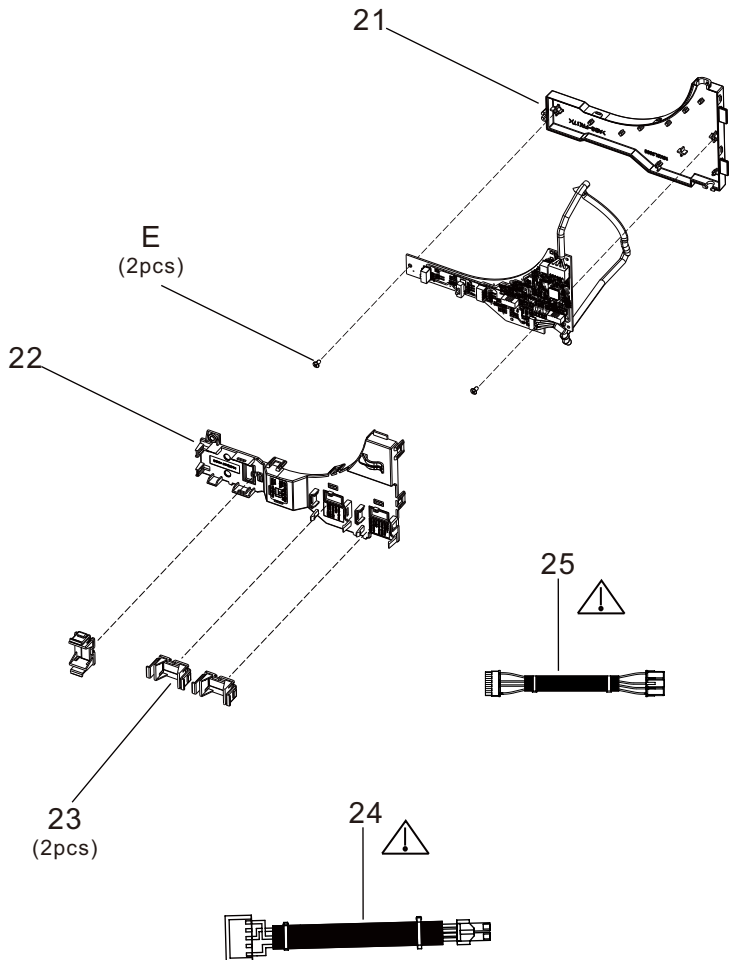
2.Parts Identification

FV-1115VKL3

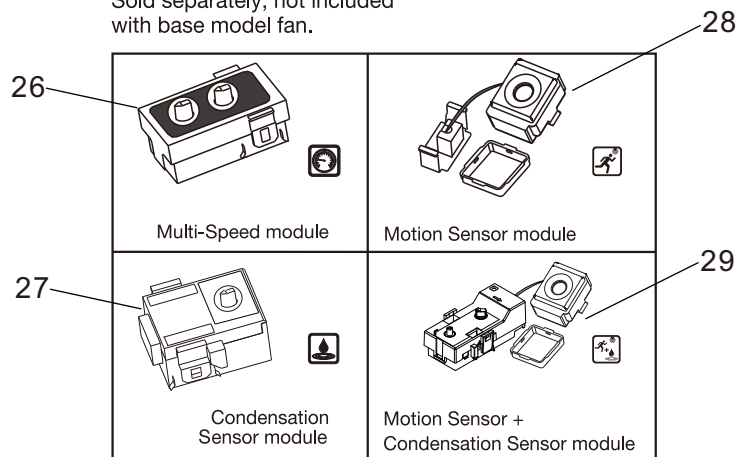
Power PCB Assy



Main PCB Assy



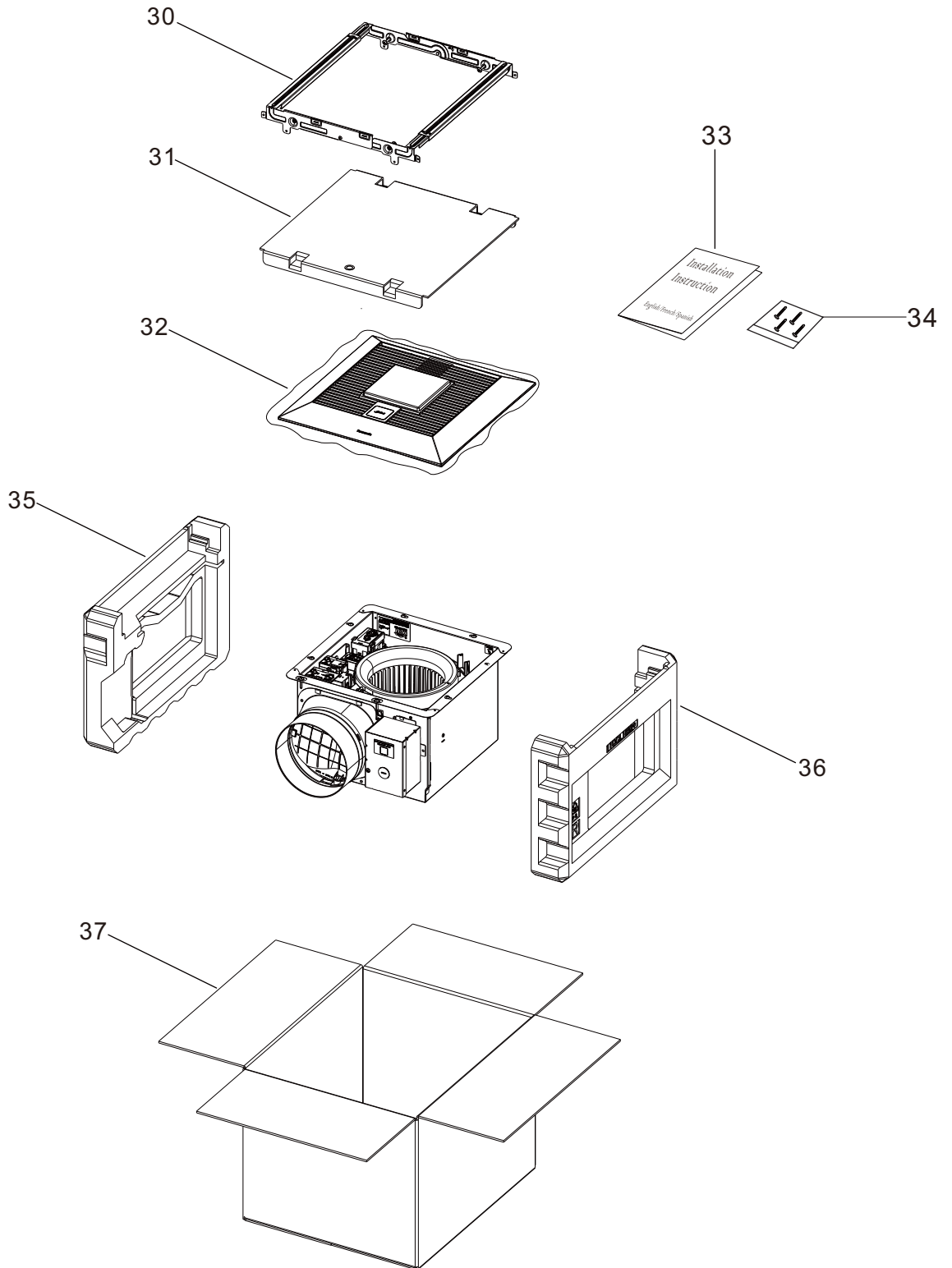
Sold separately, not included with base model fan.



2. Parts Identification

FV-1115VKL3

Packing Section



2. Parts Identification

FV-1115VKL3

Main Label

39



40

WARNING:

1. Before service or cleaning unit, switch power off at service panel and lock service panel to prevent power from being switched on accidentally.

2. Acceptable for use over a bathtub or shower when installed in a GFCI protected branch circuit.

CAUTION:

To reduce the risk of injury to persons, install fan at least 2.1m(7 feet) above the floor.

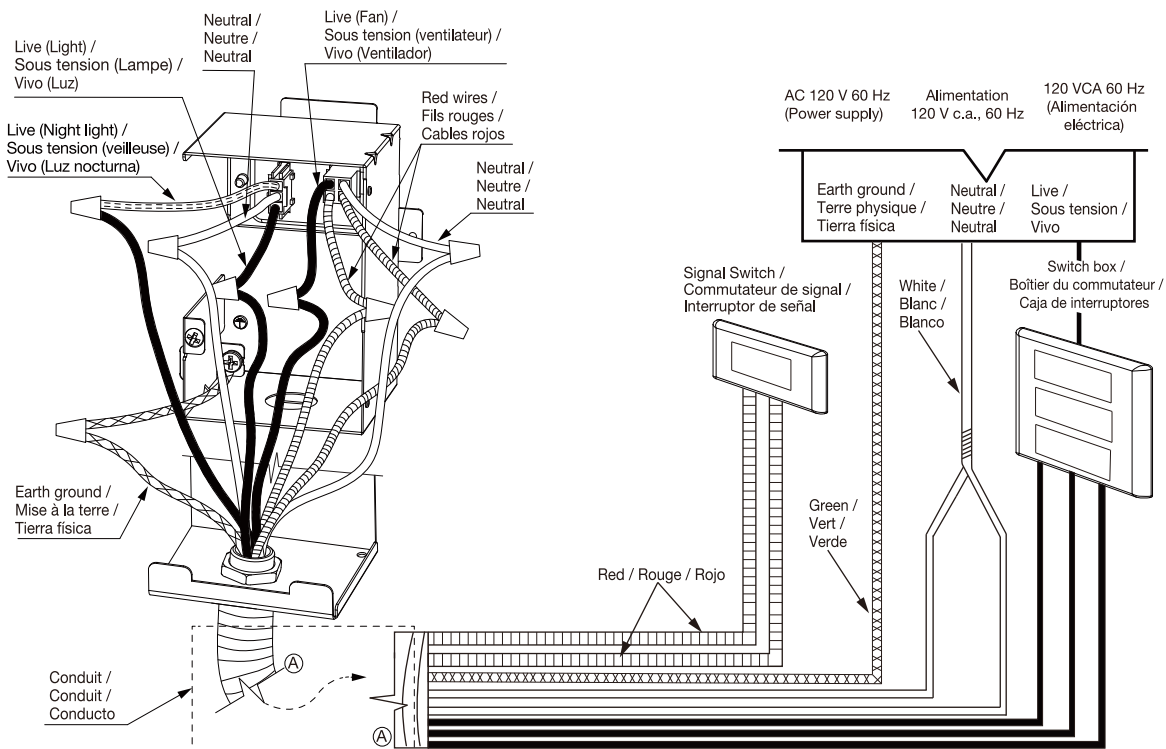
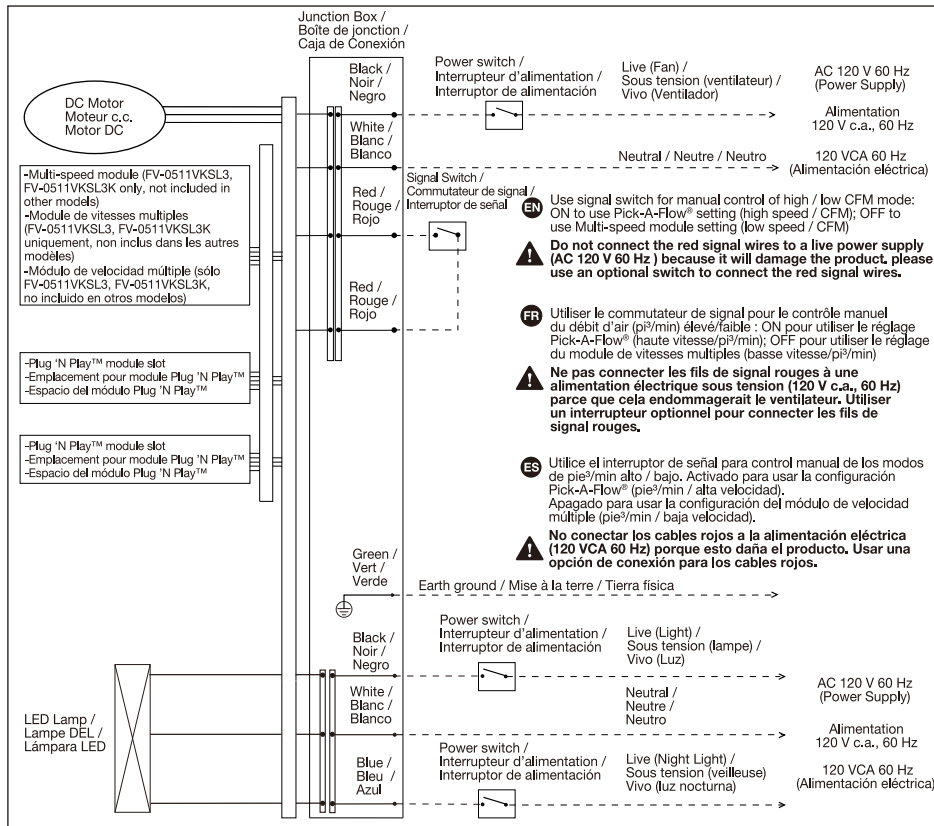
ATTENTION:

1. Pour l'entretien ou le nettoyage, mettre l'appareil hors tension au niveau de la façade des commandes et du panneau de verrouillage des commandes afin d'empêcher toute mise sous tension accidentelle.

2. Convient pour utilisation au-dessus d'une baignoire ou d'une douche si raccordé à un circuit de dérivation protégé aux normes GFCI.

3. Afin de réduire les risques de blessures corporelles, installer le ventilateur à au moins 2,1m(7 pieds) du sol.

3. Wiring Diagram



4. Parts List

FV-1115VKL3

Main Body Section

| No. | Part No. | Part Name | Q'ty | Remark |
|-----|----------------|----------------------|------|--------|
| 1 | FFV15KSL3900 | Frame Assembly | 1 | |
| 2 | FFV15KSL3910 | Adapter Assembly | 1 | ⚠ |
| 3 | FFV15KSL3913 | Connector Plate | 1 | |
| 4 | FFV511FC1301 | Connector Assy V | 1 | ⚠ |
| 5 | FFV15KSL3341 | Connector Assy L | 1 | ⚠ |
| 6 | FFV11QCL1331 | Ground Wire | 1 | ⚠ |
| 7 | FFV11QCL1912A | Junction Cover | 1 | |
| 8 | FFV11QCL1M21AX | Motor | 1 | ⚠ |
| 9 | FFV15KSL3904 | Motor Support | 1 | |
| 10 | FFV0400115S | Blade | 1 | |
| 11 | FFV7020021S | Nut | 1 | |
| 12 | FFV1115VKL3 | Power PCB Assy | 1 | ⚠ |
| 13 | FFV15KSL390 | Casing section | 1 | |
| 14 | FFV11VKL381 | Grille Assembly | 1 | ⚠ |
| 15 | FFV3400148S | Led Unit | 1 | ⚠ |
| 16 | FFV15KSL3811 | Grille | 1 | |
| 17 | FFV11KSL3M9 | Ornamental Cover | 1 | |
| A | FFVXTT4-8FFJ | Screw (ST4-8) | 3 | |
| B | FFVXYM4DC8BN | Screw w/washer(M4-8) | 1 | ⚠ |
| C | FFV7000089S | Screw (ST4-12) | 10 | |
| D | FFV7000065S | Taping Bind | 2 | |

Main PCB Section

| No. | Part No. | Part Name | Q'ty | Remark |
|-----|--------------|----------------------|------|--------|
| 18 | FFV15KSL396 | Power PCB Box | 1 | |
| 19 | FFV15KSL997 | Power PCB Cover | 1 | |
| 20 | FFV15KSL320 | Motor Lead Wire Assy | 1 | ⚠ |
| 21 | FFV15KSL393 | Main PCB Box | 1 | |
| 22 | FFV15KSL394 | Main PCB Cover | 1 | |
| 23 | FFV0900063S | Connector Cover | 3 | |
| 24 | FFV15KSL317 | Base PCB Lead Wire | 1 | ⚠ |
| 25 | FFV15KSL172 | Power Lead Wire | 1 | ⚠ |
| 26 | FFV5530071S | Multi-Speed Module | 1 | |
| 27 | FFV0010237S | Condensation Sensor | 1 | |
| 28 | FFV3740029S | Motion Sensor | 1 | |
| 29 | FFVFVCMVK3 | Dual Sensor | 1 | |
| E | FFVXTN3-8GFJ | Screw (M3-8) | 2 | |

4. Parts List

FV-1115VKL3

Packing Section

| No. | Part No. | Part Name | Q'ty | Remark |
|-----|--------------|-----------------------|------|--------|
| 30 | FFV11QCL1920 | Hanger Assy | 1 | |
| 31 | FFV4710381S | Grill Pad Assy | 1 | |
| 32 | FFV4650016S | Poly Cover | 1 | |
| 33 | FFV15VKL3420 | Inst. Instruction EFS | 1 | |
| 34 | FFV01NES0045 | Accessory A | 1 | |
| 35 | FFV11QCL1891 | Led Pad | 1 | |
| 36 | FFV11QCL1892 | Right Pad | 1 | |
| 37 | FFV15VKL3400 | Packing Case Assy | 1 | |
| 38 | FFV11KSL3055 | QR Code Label | 1 | |
| 39 | FFV15VK30083 | Caution Label | 1 | |