

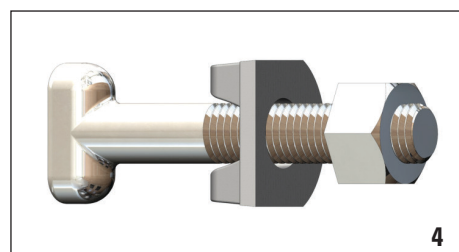
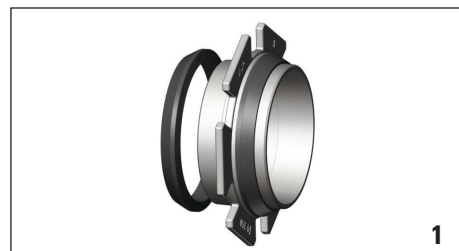
MJ COUPLER 3"–24"

Installation Instructions

PMJC

MJ x MJ Coupler for Connecting Two MJ Bells

1. Thoroughly clean both MJ bells of any foreign material (dirt, rust, etc.) and wipe clean the spigot ends of the MJ coupler.
2. Lubricate MJ gaskets and coupler spigots with appropriate lubricant. Gaskets must be installed with the flat side of the gasket flush against the center ring of the coupler.
3. Insert one spigot end of the MJ coupler with gasket into the first MJ bell. Then push the other MJ bell onto the other gasketed coupler spigot. Align the slots of the coupler center ring with the bolt holes of the MJ bells.
4. Insert bolts through the assembly, then slide the spacers provided onto the bolts such that the wider flat side of the spacer faces the nut.
Note: Pigtail bolts are provided for slotted bolt connections on valves or fittings or can be used in solid bolt holes.
5. Assemble the nuts onto the bolts using the proper-sized wrench or socket. Tighten in an alternate pattern (star pattern) until they are within torque ranges suggested on the side, dependent on fitting size.



| SIZE (in.) | RECOMMENDED TORQUE (T-HEAD, PIGTAIL EYE BOLTS) |
|---------------|---|
| | (ft-lbs)* |
| 3" | 45–60 |
| 4"–24" | 75–90 |

*Requirement of AWWA C600