

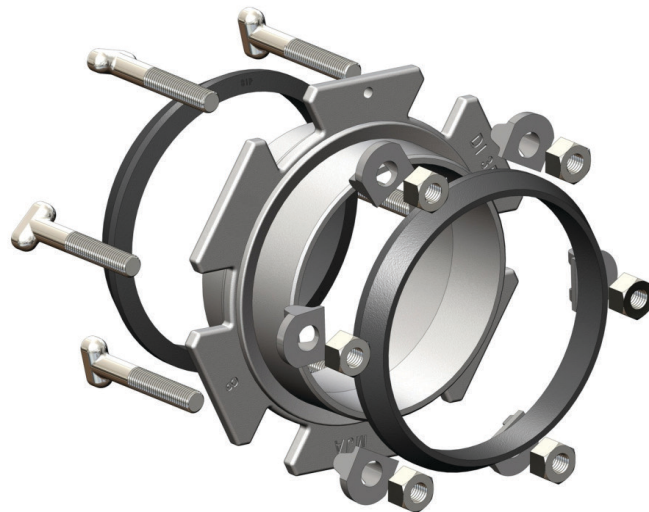
## MJ Coupler 3"–24" Product Specifications

**PMJC**

The MJ x MJ Coupler offers an efficient, reliable and cost-effective method to connect mechanical joint bells to one another where space and restraining options are minimal.

### Product Features

- Compact design allows connection of two MJ bells on valves and fittings where there is limited space
- Allows for a secure connection using the minimal space requirements of 1-1/4" for 3"–10" and 1-3/4" for 12"–24"
- Performs to a maximum working pressure of 350 psi for sizes 3"–24" for use with standard MJ fittings and valves
- Uses NSF61 approved standard MJ gaskets, SBR, per ANSI/AWWA C111/A21.11
- T-Head, and pigtail bolts and all nuts made from high-strength, low-alloy steel per ANSI/AWWA C111/C21.11
- Comes complete with all necessary accessories
- MJ Couplers meet ANSI/AWWA C153/A21.53 and ANSI/AWWA C110/A21.10



## MJ Coupler 3"–24"

### Product Specifications

**PMJC**

#### MJ x MJ Coupler Specifications\*

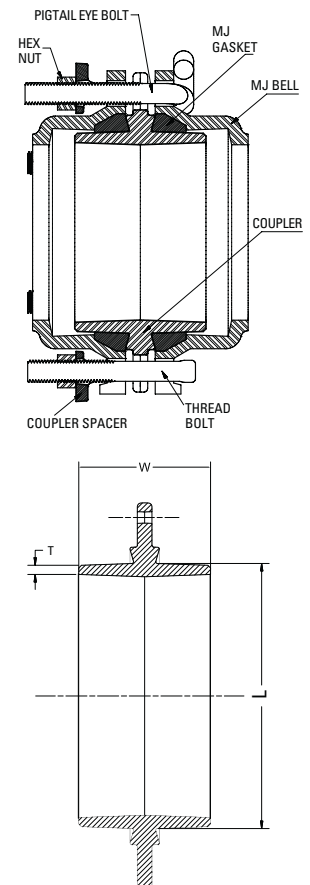
Alt Code	Alt Code Blue Bolt	Size	MJ Gasket	T-Head Bolt		Pigtail Eye Bolt		Coupler Spacers	W	L	T	Wt w/ Accessories
			Qty	in.	Qty	in.	Qty	Qty	in.	in.	in.	lbs
PMJCM	PMJCBBM	3	2	5/8 x 4	4	N/A	N/A	4	4.50	3.96	0.29	10
PMJCP	PMJCBBP	4	2	3/4 x 4-1/2	4	N/A	N/A	4	4.50	4.80	0.31	16
PMJCU	PMJCBBU	6	2	3/4 x 4-1/2	4	3/4 x 4-1/2	2	6	4.50	6.90	0.31	23
PMJCX	PMJCBBX	8	2	3/4 x 4-1/2	4	3/4 x 4-1/2	2	6	4.50	9.05	0.31	29
PMJC10	PMJCBB10	10	2	3/4 x 5	4	3/4 x 5	4	8	4.6	11.10	0.34	41
PMJC12	PMJCBB12	12	2	3/4 x 5	4	3/4 x 5	4	8	4.6	13.20	0.34	45
PMJC16	PMJCBB16	16	2	3/4 x 5-1/2	12	N/A	N/A	12	6	17.40	0.37	80
PMJC18	PMJCBB18	18	2	3/4 x 6	12	N/A	N/A	12	6.75	19.50	0.38	98
PMJC20	PMJCBB20	20	2	3/4 x 6	14	N/A	N/A	14	6.75	21.60	0.39	111
PMJC24	PMJCBB24	24	2	3/4 x 6	16	N/A	N/A	16	6.75	25.80	0.44	130

\*All dimensions in inches except where indicated.

#### Bolts in C153 Accessory Pack\*

Alt Code	Alt Code Blue Bolts	Size	T-Head Bolt		Pigtail Eye Bolt		Wrench/Socket Size	Recommended Torque (T-Head, Pigtail Eye Bolts)
		in.	in.	Qty	in.	Qty	in.	ft-lbs
PMJCM	PMJCBBM	3	5/8 x 4	4	N/A	N/A	1-1/16	45-60
PMJCP	PMJCBBP	4	3/4 x 4-1/2	4	N/A	N/A	1-1/8	75-90
PMJCU	PMJCBBU	6	3/4 x 4-1/2	4	3/4 x 4-1/2	2	1-1/8	75-90
PMJCX	PMJCBBX	8	3/4 x 4-1/2	4	3/4 x 4-1/2	2	1-1/8	75-90
PMJC10	PMJCBB10	10	3/4 x 5	4	3/4 x 5	4	1-1/8	75-90
PMJC12	PMJCBB12	12	3/4 x 5	4	3/4 x 5	4	1-1/8	75-90
PMJC16	PMJCBB16	16	3/4 x 5-1/2	12	N/A	N/A	1-1/4	75-90
PMJC18	PMJCBB18	18	3/4 x 6	12	N/A	N/A	1-1/4	75-90
PMJC20	PMJCBB20	20	3/4 x 6	14	N/A	N/A	1-1/4	75-90
PMJC24	PMJCBB24	24	3/4 x 6	16	N/A	N/A	1-1/4	75-90

\*All dimensions in inches except where indicated.





## MJ Coupler 3"–24" Product Specifications

**PMJC**

### Sample Specifications

A bolt-through restraint mechanism shall be used to connect mechanical joint bells to mechanical joint bells on either valves or fittings without the use of pipe.

The MJ x MJ coupler design will incorporate a spigot x spigot bolt-through restraint mechanism that allows for this connection using T-head or pigtail bolts with nuts and spacers.

The MJ x MJ coupler and spacers shall be manufactured from high-strength ductile iron in accordance with ASTM A536, Grade 65-45-12. T-head and pigtail bolts and all nuts shall be high-strength, low-alloy and shall conform to ANSI/AWWA C111/A21.11. Mechanical joint gaskets shall be Standard SBR (styrene butadiene rubber and conform to ANSI/AWWA C111/A21.11.

The MJ x MJ coupler shall have a maximum water working pressure of 350 PSI for sizes 3"–24". Approved asphaltic seal coat that conforms to ANSI/AWWA C104/A21.4 or a Fusion-Bonded Epoxy (FBE) coating in accordance with C116/A21.16.

The MJ x MJ coupler kit shall come complete with one MJ x MJ coupler, two standard SBR mechanical joint gaskets, and all required T-head bolts or pigtail bolts and nuts and spacers.

The MJ x MJ coupler shall be PROSELECT MJ x MJ coupler or an approved equal.

The MJ x MJ coupler may not fit on both branch and run of tees and crosses and on both ends of some bends because of long bolts and spacers. When installing fitting to fitting, pigtail eye bolts may be inserted into any bolt hole. For certain valves, it may be easier to insert pigtail eye bolts on the sides of the valve or in slotted holes.