



**CERTIFIED
GOLD**



ProTeam GoFit® 3

107713* GoFit 3 w/Xover Telescoping Wand Kit D (107100) \$700

Packed with the same power and efficiency, the GoFit 3-qt delivers big power for those with a smaller frame. This cleaning solution tool is also perfect for those new to commercial backpack vacuums. And, get a customized fit with the vacuum's new quick-adjust harness, making it easy to adjust the height to personalized needs.



Specifications

Weight:	11.4 lbs. / 5.17 kg.
Motor Airflow:	153 CFM
Static Lift:	91 in.
Motor:	1330 W / 11.7 A
Decibel:	68 dBA
Capacity:	3 qt. / 3.3 L
ProLevel Filtration® w/Four Levels of Filtration:	863.8 sq. in. total area

**ProLevel Filtration System with HEPA Media

Captures 99.79% at 0.3-.5 microns per ASTM F3150

Limited Warranty

- 3 years parts, labor and motor on vacuum
- Limited lifetime on molded body parts



ERGONOMIC



**CLEANING
FOR HEALTH**



**EASY
MAINTENANCE**

*Standard Configuration

14" Xover Floor Tool	3" Dust Brush
Telescoping Wand	17" Crevice Tool
5" Upholstery Tool	

Related Products

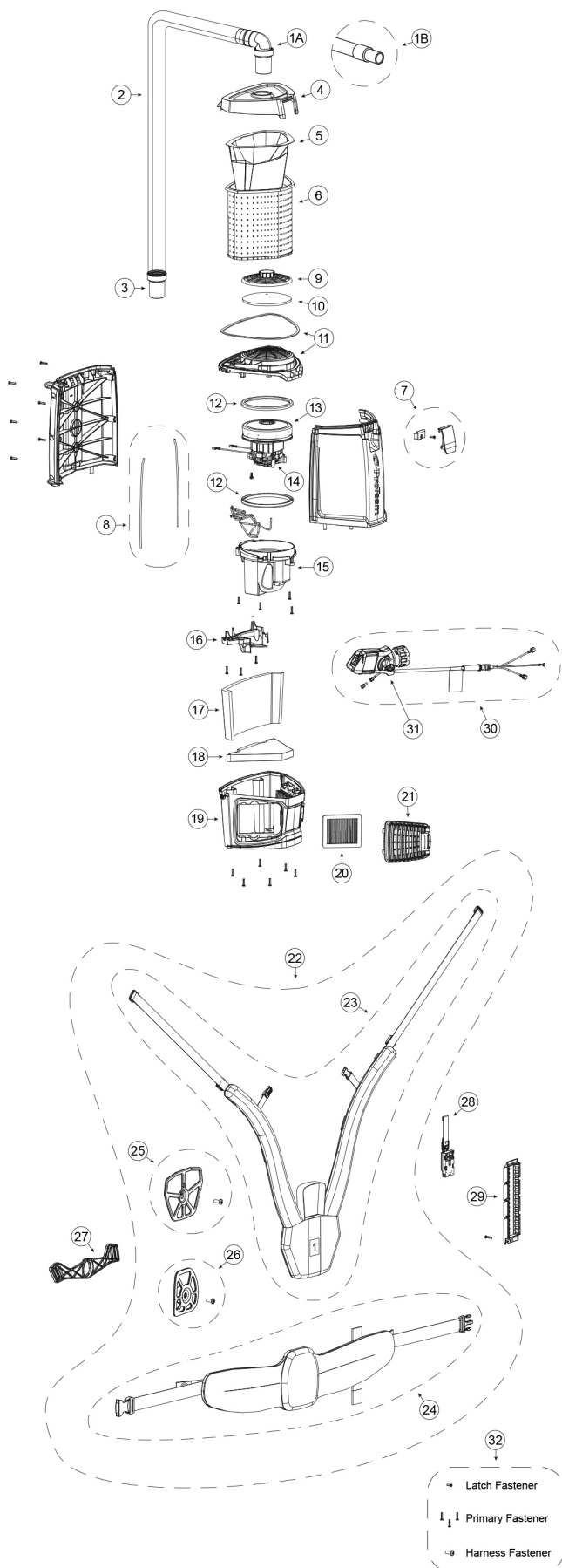
107666 Intercept Micro® Filters, 10/pk (open collar)	\$19.67
107667 Intercept Micro Filters, 10/pk (closed collar)	26.80

GoFit 3 Optional Configurations

107714 w/Xover® Two-Piece Wand Tool Kit B (107098)	\$700
107715 w/ProBlade® Carpet Floor Tool Kit (107530)	700
107716 w/ProBlade Carpet and Hard Surface Floor Tool Kit (107532)	775
107726 w/Restaurant Kit (100727)	715
107738 w/Xover Performance Telescoping Wand Tool Kit C (107099)	700
107747 w/Two-Piece Wand (101338) and Xover Tool (107016)	675
107748 w/Telescoping Wand (107628) and Xover Tool (107016)	680

**The filtration value of ProTeam's ProLevel Filtration System in this vacuum is achieved by the use of a multi-stage filtration system, including intercept micro filter, micro cloth filter, plastic cage with foam filter, and post-motor filter made from HEPA media, as tested per ASTM F3150. Specification calculations are based on average motor performance.

GOFIT 3, 6, 6 PLUS & 10 PARTS



No.		Product Name	Qty	List Price
1A	101928	Replacement Double Swivel Elbow Cuff	1 ea.	13.40
1B	100694	Replacement Double Swivel Straight Cuff	1 ea.	7.99
2	107648	48" Static-Dissipating Hose	1 ea.	40.47
		w/Non-Replaceable Elbow and Straight Cuffs		
	100505	48" Static-Dissipating Hose w/ Straight Cuffs	1 ea.	38.68
3	100694	Replacement Double Swivel Straight Cuff	1 ea.	7.99
4	843694	Purple Cap	1 ea.	37.20
5	107313	Intercept Micro Filter (GoFit 10)	10/pk	27.32
	107314	Intercept Micro Filter (GoFit 6)	10/pk	22.58
	107666	Intercept Micro Filter (GoFit 3)	10/pk	19.67
6	834000	Micro Cloth Filter (GoFit 10)	1 ea.	43.72
	834072	Micro Cloth Filter (GoFit 6)	1 ea.	36.11
	843966	Micro Cloth Filter (GoFit 3)	1 ea.	32.90
7	510779	Latch Assembly Complete w/ Retainer and Screw	1 ea.	8.92
8	834035-5	Gasket Tank 10 QT	2 ea.	3.76
	834035-3	Gasket Tank 6 QT	2 ea.	3.76
	834035-4	Gasket Tank 3 QT	2 ea.	3.76
9	510183	Dome Filter w/ Foam Media (includes: 10)	1 set	11.66
10	510184	Foam Filter Media for Dome Filter	1 ea.	3.55
11	510777	Upper Motor Support w/ Gasket	1 ea.	17.28
12	510780	Motor Gaskets Upper and Lower	1 ea.	4.87
13	844193	Motor Assembly 1300W	1 ea.	161.39
	844545	Motor Assembly with Lead (GoFit 6 PLUS)	1 ea.	166.22
14	841933	Carbon Brush Set	2 ea.	30.98
15	510781	Lower Motor Support w/ Screws	1 set	11.26
16	510776	Cover Wire w/ Screws	1 set	5.47
17	843963	Upper Foam Pad	1 ea.	3.88
18	843964	Lower Foam Pad	1 ea.	3.84
19	510778	Lower Housing Assembly w/ Screws	1 set	25.52
20	844488	Exhaust Filter Made from HEPA Media	2 ea.	17.07
21	843848	Exhaust Filter Door	1 ea.	9.43
22	844073	Harness Complete Assembly	1 ea.	103.39
23	844665	Upper Harness Assembly	1 ea.	52.06
24	843939	Lower Harness Assembly	1 ea.	50.93
25	510771	Upper Harness Plate w/ Screw	1 ea.	9.20
26	510772	Lower Harness Plate w/ Screw	1 ea.	9.34
27	843842	Lower Harness Articulating Arm	1 ea.	7.57
28	843947	Harness Quick Adjuster Assembly	1 ea.	8.72
29	510773	Harness Quick Adjust Holder w/ Screw (GoFit 10)	1 set	7.70
	510774	Harness Quick Adjust Holder w/ Screw (GoFit 6)	1 set	7.70
	510775	Harness Quick Adjust Holder w/ Screw (GoFit 3)	1 set	7.70
30	844156	Switch Box Assembly	1 ea.	48.39
	844156-2	Switch Box Assembly w/ Internal Electronics (GoFit 6 PLUS)	1 ea.	78.83
	844156-1	Switch Box Assembly for GoFit PH service (GoFit PH)	1 ea.	60.44
31	510782	Yellow Cord Guide w/ Screws	1 ea.	10.18
32	510783	Fastener Package	1 ea.	4.69
	101678	50' Extension Cord (Not shown)	1 ea.	49.64

Highlighted SKUs are shared parts with Super Coach Pro 6/10 vacuums