



PRODUCT CATALOG

2024 v.3

MKB Stormwater
Innovation

TABLE OF CONTENTS:

1 Sediment Control

a. Filtrex [®] / Advanced Tubular Filters	
SiltSoxx [®] / Compost Filter Sock	4
SiltSoxx [®] RH / Rice Hull Filter Sock	8
Installation Claw	11
SwitchSoxx [™] / Switchgrass Filter Sock	12
DiversionSoxx [™] / Compost Diversion Sock	14
Installer Netting	16
RockSoxx [™] / Rock + Compost Filter Sock	20
b. Rock Log / Rock Filter Log	22
c. RoadWattle [®] / Portable Road Wattle	24
d. StormCatcher [®] / Weighted Sediment Tube	26
e. BlackHawk [®] / Advanced Inlet Filter Mat	28
f. FryeFlow [™] / Curb Box Inlet Filter Bag	30
g. FryeFlow [™] / Inlet Filter Bag	32
h. Inlet Bags / Geotextile Bag	34
i. FryeFlow [™] / Concrete Washout Solution	35
j. Siltron [®] / Advanced Silt Fence	37
k. Silt Fence / Commercial & DOT Grade	39
l. Wooden Stakes	40

2 Erosion Control

a. ErosionTech [®] / Rolled Blanketing	41
Straw RECP	43
Excelsior RECP	44
Coir RECP	45
Permanent TRM	46

b. Geotextiles	47
c. Staples & Pins	49
d. StapleSetter	50
e. GreenStake Bio Staples	51
f. GreenStake GreenDriver	52
h. ErosionTech® / Wattles & Logs	
Straw Wattle / Common Straw Wattle	53
DiamondWattle™ / Advanced Straw Wattle	55
Excelsior Log	58
Coir Log	61
i. Retail Straw Products	
StrawMax® Seeding Straw	63
StrawMax® Lawn Repair Mix	64
StrawMax® Home & Garden	65
ErosionTech® Rolled Straw Blanket	66

3 Stormwater Management

a. Filtrexx EnviroSoxx® / Pollutant Filter Sock	67
b. Filtrexx StormExx® / Catch Basin Filter	69

4 Green Infrastructure

a. Filtrexx GroSoxx® / Vegetated Compost Sock	71
b. Filtrexx GreenLoxx® / Vegetated Wall, Slope & Shore Systems	73



SILTSOXX®

Compost Filter Sock



Controls Costs While You Control Runoff.

Easily installed for a variety of construction applications, SiltSoxx reduces the labor cost required for installation and maintenance, while delivering optimal performance.

Common applications include perimeter control, inlet protection, check dams, and slope interruption.

SiltSoxx is prefilled with certified FilterMedia™, ready to ship, and easy to install. Available in a variety of sizes, configurations, and netting materials for any project requirements.

SiltSoxx is also available in two natural netting options, eliminating the need for field removal.

ORIGINAL Netting:

- The most widely recognized & used polypropylene netting in the industry
- Available in classic green/black stripe

NATURAL ORIGINAL Netting:

- 100% Biodegradable Cotton fiber
- Functional field longevity up to 12 mo.

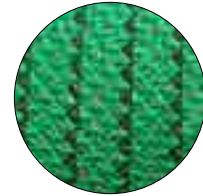
NATURAL+ Netting:

- 100% Biodegradable Wood fiber
- Functional field longevity up to 18 mo.



SiltSoxx Original Product Specs:

Netting Material Type	Original Pallet Netting Heavy Duty Multi-Filament Polypropylene (MFPP)
Netting Degradation	Photodegradable
Netting Diameters	5", 8", 12", 18", 24"
Netting Opening Size	1/8"
Netting Color	Green w/ Thin Black Stripe
Fabric Tensile Strength (ASTM D4595)¹	546 lbs
Fill Type	Tested & Certified, Locally Sourced Composted FilterMedia
Functional Longevity²	up to 5 years
Edging Material	Edging Media Bags Available
Staking Recommendation	Every 10-ft (stakes not included on precuts)



Netting Sample



Fill Sample

¹Tensile Strength is based on 12" diameter using ATSM D4595. See Filtrix TechLink #3342 for full tensile strength testing.

²Functional longevity ranges are estimates only. Site specific environmental conditions may result in significantly shorter or longer time periods.

ORIGINAL Item List:

Item Number	Diameter	Total Linear Feet per pallet	Unit Length	Units per pallet	Stakes per pallet	Pallet Weight
P05-400S2	5-in	400-ft	200	2	42	~ 1600 lbs
PN05-400S16	5-in	400-ft	25-ft	16	0	~ 1600 lbs
P08-200	8-in	200-ft	200-ft	1	21	~ 1600 lbs
PN08-200S20	8-in	200-ft	10-ft	20	0	~ 1600 lbs
PN08-200S10	8-in	200-ft	20-ft	10	0	~ 1600 lbs
P12-110	12-in	110-ft	110-ft	1	12	~ 1700 lbs
PN12-100S10	12-in	100-ft	10-ft	10	0	~ 1650 lbs
P18-55	18-in	55-ft	55-ft	1	7	~ 1750 lbs
PN18-50S5	18-in	50-ft	10-ft	5	0	~ 1650 lbs
P24-40	24-in	40-ft	40-ft	1	5	~ 1800 lbs

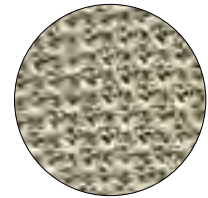
Shipping Specs:

Pallets per TL	26
Shipping Dimensions	40L x 48W x 66H
Packaging	40 x 48 Pallet with Plastic Stretch-Wrap or Super Sack
Storage Life	Under Roof - 6 months / Outdoors - 3 months

Diameter	Stake Size (Nominal)
5-in	1" x 1" x 12"
8-in	2" x 2" x 24"
12-in	2" x 2" x 24"
18-in	2" x 2" x 36"
24-in	2" x 2" x 42"

SiltSoxx Natural Original Product Specs:

Netting Material Type	Natural Original Pallet Netting All Natural Biodegradable Cotton Fiber
Netting Degradation	Biodegradable
Netting Diameters	5", 8", 12"
Netting Opening Size	1/8"
Netting Color	Beige
Fabric Tensile Strength (ASTM D4595) ¹	175 lbs
Fill Type	Tested & Certified, Locally Sourced Composted FilterMedia
Functional Longevity ²	up to 12 months
Edging Material	Edging Media Bags Available
Staking Recommendation	Every 10-ft (stakes not included on precuts)



Netting Sample



Fill Sample

¹Tensile Strength is based on 12" diameter using ATSM D4595. See Filtrex TechLink #3342 for full tensile strength testing.

²Functional longevity ranges are estimates only. Site specific environmental conditions may result in significantly shorter or longer time periods.

NATURAL ORIGINAL Item List:

Item Number	Diameter	Total Linear Feet per pallet	Unit Length	Units per pallet	Stakes per pallet	Pallet Weight
PC05-400S2	5-in	400-ft	200	2	42	~ 1600 lbs
PCN05-400S16	5-in	400-ft	25-ft	16	0	~ 1600 lbs
PC08-200	8-in	200-ft	200-ft	1	21	~ 1600 lbs
PCN08-200S20	8-in	200-ft	10-ft	20	0	~ 1600 lbs
PCN08-200S10	8-in	200-ft	20-ft	10	0	~ 1600 lbs
PC12-110	12-in	110-ft	110-ft	1	12	~ 1700 lbs
PCN12-100S10	12-in	100-ft	10-ft	10	0	~ 1650 lbs

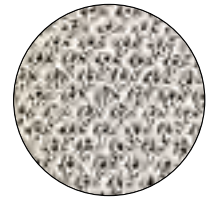
Shipping Specs:

Pallets per TL	26
Shipping Dimensions	40L x 48W x 66H
Packaging	40 x 48 Pallet with Plastic Stretch-Wrap or Super Sack
Storage Life	Storage not recommended. All SiltSoxx Natural products are made to order due to biodegradable properties.

Diameter	Stake Size (Nominal)
5-in	1" x 1" x 12"
8-in	2" x 2" x 24"
12-in	2" x 2" x 24"

SiltSoxx Natural+ Product Specs:

Netting Material Type	Natural + Pallet Netting All Natural Biodegradable Wood Fiber
Netting Degradation	Biodegradable
Netting Diameters	5", 8", 12"
Netting Opening Size	1/8"
Netting Color	Off-White
Fabric Tensile Strength (ASTM D4595) ¹	249 lbs
Fill Type	Tested & Certified, Locally Sourced Composted FilterMedia
Functional Longevity ²	up to 18 months
Edging Material	Edging Media Bags Available
Staking Recommendation	Every 10-ft (stakes not included on precuts)



Netting Sample



Fill Sample

¹Tensile Strength is based on 12" diameter using ATSM D4595. See Filtrex TechLink #3342 for full tensile strength testing.

²Functional longevity ranges are estimates only. Site specific environmental conditions may result in significantly shorter or longer time periods.

NATURAL+ Item List:

Item Number	Diameter	Total Linear Feet per pallet	Unit Length	Units per pallet	Stakes per pallet	Pallet Weight
PW05-400S2	5-in	400-ft	200	2	42	~ 1600 lbs
PWN05-400S16	5-in	400-ft	25-ft	16	0	~ 1600 lbs
PW08-200S2	8-in	200-ft	100-ft	2	22	~ 1600 lbs
PWN08-200S20	8-in	200-ft	10-ft	20	0	~ 1600 lbs
PWN08-200S10	8-in	200-ft	20-ft	10	0	~ 1600 lbs
PW12-110	12-in	110-ft	110-ft	1	12	~ 1700 lbs
PWN12-100S10	12-in	100-ft	10-ft	10	0	~ 1650 lbs

Shipping Specs:

Pallets per TL	26
Shipping Dimensions	40L x 48W x 66H
Packaging	40 x 48 Pallet with Plastic Stretch-Wrap or Super Sack
Storage Life	Storage not recommended. All SiltSoxx Natural products are made to order due to biodegradable properties.

Diameter	Stake Size (Nominal)
5-in	1" x 1" x 12"
8-in	2" x 2" x 24"
12-in	2" x 2" x 24"

SILTSOXX[®] RH

Rice Hull Filter Sock



The newest, lightest filter sock for your BMP toolbox.

Independent testing shows that rice hulls form an excellent high flow, high sediment retention, 3 dimensional filtering matrix when used in E&SC tubular products.

Rice hulls are a domestic by-product from rice farming within the U.S. in California, Arkansas, the Gulf Coast, and in the Mississippi River Delta region.

Use SiltSoxx RH for perimeters, slope interruption and other hard-to-reach project sites - no trenching required like straw wattles.

Eliminate labor removal and landfill costs with our 100% biodegradable Natural + netting option. Once your project is complete, the biodegradable rice hull media can be left on site, forming a soil amendment.

General Details:

- Lighter and easier to handle on the jobsite
- Weed free & promotes vegetative cover
- Available in 100% Biodegradable Natural + Netting

Compared to Straw Wattle:

- Durable, high performance CFS netting
- Same shipping configuration as wattles
- Continuous length pallets include stakes
- Heavier so it stays in place better
- No straw means no mess, no rodents
- No trenching required - stake every 5 feet
- Lasts longer and keeps its shape better

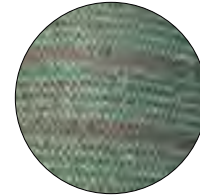


SILTSOXX® RH

Rice Hull Filter Sock

SiltSoxx RH Product Specs:

Netting Material Type	Diamond Sock® Pallet Netting Heavy Duty Multi-Filament Polypropylene (MFPP)
Netting Degradation	Photodegradable
Netting Diameters	9", 12", 18"
Netting Opening Size	1/8"
Netting Color	Green w/ Black Stripes
Fabric Tensile Strength (ASTM D4595)¹	524 lbs
Fill Type	Domestically Produced, Weed Free Rice Hulls
Functional Longevity²	1-2 years
Edging Material	Edging Media Bags Available
Staking Recommendation	Every 5-ft (stakes not included on precuts)



Netting Sample



Fill Sample

¹Tensile Strength is based on 12" diameter using ATSM D4595. See Filtrex TechLink #3342 for full tensile strength testing.

²Functional longevity ranges are estimates only. Site specific environmental conditions may result in significantly shorter or longer time periods.

Item List:

Item Number	Diameter	Total Linear Feet per pallet	Unit Length	Units per pallet	Stakes per pallet	Pallet Weight
RH9-305	9-in	305-ft	205-ft/100-ft	2	63	~ 800 lbs
RH9-14-25	9-in	350-ft	25-ft	14	0	~ 900 lbs
RH12-160	12-in	160-ft	160-ft	1	33	~ 850 lbs
RH12-10-20	12-in	200-ft	20-ft	10	0	~ 850 lbs
RH12-20-10	12-in	200-ft	10-ft	20	0	~ 850 lbs
RH18-65	18-in	65-ft	65-ft	1	14	~ 850 lbs
RH18-6-10	18-in	60-ft	10-ft	6	0	~ 850 lbs

Shipping Specs:

Pallets per TL	28
Shipping Dimensions	40L x 48W x 66H
Packaging	40 x 48 Pallet with Plastic Stretch-Wrap or Super Sack
Storage Life	Under Roof - 6 months / Outdoors - 3 months

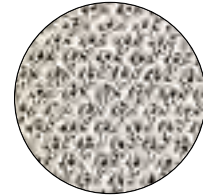
Diameter	Stake Size (Nominal)
9-in	1.5" x 1.5" x 24"
12-in	1.5" x 1.5" x 24"
18-in	1.5" x 1.5" x 36"

SILTSOXX RH®

Natural+ Rice Hull Filter Sock

SiltSoxx RH Natural+ Product Specs:

Netting Material Type	Natural + Pallet Netting All Natural Biodegradable Wood Fiber
Netting Degradation	Biodegradable
Netting Diameters	9", 12"
Netting Opening Size	1/8"
Netting Color	Off-White
Fabric Tensile Strength (ASTM D4595)¹	249 lbs
Fill Type	Domestically Produced, Weed Free Rice Hulls
Functional Longevity²	up to 18 months
Edging Material	Edging Media Bags Available
Staking Recommendation	Every 5-ft (stakes not included on precuts)



Netting Sample



Fill Sample

¹Tensile Strength is based on 12" diameter using ATSM D4595. See Filtrex TechLink #3342 for full tensile strength testing.

²Functional longevity ranges are estimates only. Site specific environmental conditions may result in significantly shorter or longer time periods.

Item List:

Item Number	Diameter	Total Linear Feet per pallet	Unit Length	Units per pallet	Stakes per pallet	Pallet Weight
RHW9-305	9-in	305-ft	205-ft/100-ft	2	63	~ 800 lbs
RHWN9-14-25	9-in	350-ft	25-ft	14	0	~ 900 lbs
RHW12-160	12-in	160-ft	160-ft	1	33	~ 850 lbs
RHWN12-10-20	12-in	200-ft	20-ft	10	0	~ 850 lbs
RHWN12-20-10	12-in	200-ft	10-ft	20	0	~ 850 lbs

Shipping Specs:

Pallets per TL	28
Shipping Dimensions	40L x 48W x 66H
Packaging	40 x 48 Pallet with Plastic Stretch-Wrap or Super Sack
Storage Life	Under Roof - 6 months / Outdoors - 3 months

Diameter	Stake Size (Nominal)
9-in	1.5" x 1.5" x 24"
12-in	1.5" x 1.5" x 24"

INSTALLATION CLAW



Speeds up the installation of palletized filter sock.

- Hydraulically powered.
- Easy to use – clamp down on unopened material to travel, lift the arm to allow the flop of sock, clamp down and backup to stretch sock into straight line.
- Stabilizes pallets while driving over uneven ground.
- Use with skid steer or telehandler.
- Install compost filter sock, switchgrass filter sock, or diversion sock.
- Use to safely unload pre-filled sock from flatbed truck.



SWITCHSOXX™

Switchgrass Filter Sock



Compost Filter Sock on a diet.

Switchgrass Filter Sock is much lighter than a Compost Filter Sock of similar diameter. This allows for all sorts of efficiencies (see below). The biggest one – you can put down more sock each day. This is important for large projects where E&S crews have to keep up.

Because performance matters, SwitchSoxx is independently tested, and approved by PA DEP for HQ and EV watersheds.

Something good just got better (a little family competition never hurts).

General Details:

- Independently tested for hydraulic flow and sediment removal
- No trenching required - stake every 5 feet
- Available pre-filled diameters are 8, 12, 18, and 24 - inch
- Palletized standard in a supersack and available in continuous or precut lengths
- Much lower weight per pallet (650 lbs vs. 1750 lbs)
- On average, 36% more footage per Tractor Load (1430 vs. 1950 linear feet of 18 - inch).
- Longer lengths on a pallet or in a super sack
- Promotes vegetative cover

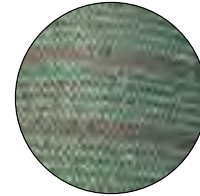


SWITCHSOXX™

Switchgrass Filter Sock

SwitchSoxx Product Specs:

Netting Material Type	Diamond Sock® Pallet Netting Heavy Duty Multi-Filament Polypropylene (MFPP)
Netting Degradation	Photodegradable
Netting Diameters	8", 12", 18", 24"
Netting Opening Size	1/8"
Netting Color	Green w/ Black Stripes
Fabric Tensile Strength (ASTM D4595)¹	524 lbs
Fill Type	Locally Sourced, Weed Free Switchgrass
Functional Longevity²	1 year
Edging Material	Edging Media Bags Available
Staking Recommendation	Every 5-ft



Netting Sample



Fill Sample

¹Tensile Strength is based on 12" diameter using ATSM D4595. See Filtrex TechLink #3342 for full tensile strength testing.

²Functional longevity ranges are estimates only. Site specific environmental conditions may result in significantly shorter or longer time periods.

Item List:

Item Number	Diameter	Total Linear Feet per pallet	Unit Length	Units per pallet	Stakes per pallet	Pallet Weight
SS8-205-SS	8-in	205-ft	205-ft	1	42	~ 600 lbs
SS12-125-SS	12-in	125-ft	125-ft	1	26	~ 600 lbs
SS18-65-SS	18-in	65-ft	65-ft	1	14	~ 650 lbs
SS24-40-SS	24-in	40-ft	40-ft	1	9	~ 665 lbs

Shipping Specs:

Pallets per TL	30
Shipping Dimensions	40L x 48W x 66H
Packaging	40 x 48 Pallet with Super Sack
Storage Life	Under Roof - 6 months / Outdoors - 3 months

Diameter	Stake Size (Nominal)
8-in	2" x 2" x 24"
12-in	2" x 2" x 24"
18-in	2" x 2" x 36"
24-in	2" x 2" x 42"

DIVERSIONSOXX[™]

Compost Diversion Sock



Divert stormwater runoff, naturally.

DiversionSoxx is a conveyance BMP that replaces an excavated fresh water diversion ditch. DiversionSoxx is much heavier and denser than Compost Filter Sock so water is conveyed along it, not through it.

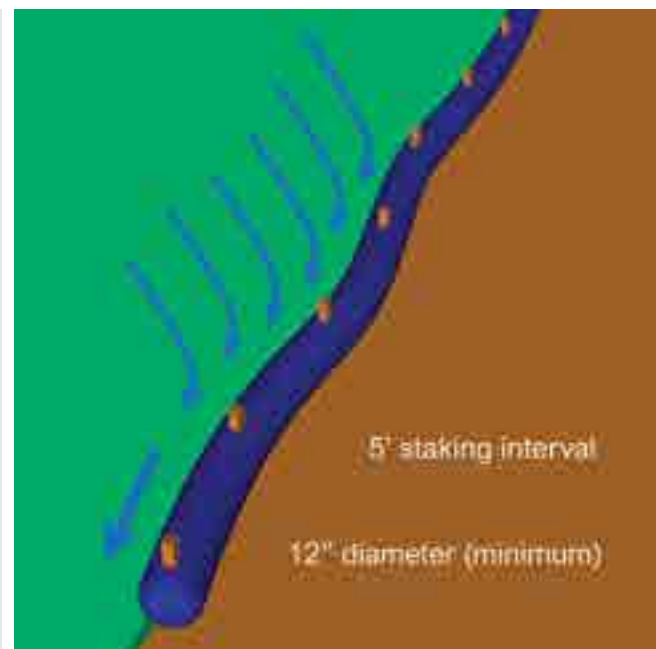
DiversionSoxx is placed above the jobsite in a diagonal orientation. Fresh water flows along (not through) DiversionSoxx and around the disturbed area.

DiversionSoxx can also be used within the disturbed area to direct sediment-laden water to a sediment trap or off a ROW in a water bar application (where excavation is not possible).

If desired and depending on the application, this product can be vegetated and left in place as a permanent stormwater device.

General Details:

- Available in 12, 18, or 24-in diameters
- Available on pallet or in super sack
- Little to no hydraulic flow through
- 50% CFS fill plus 50% leaf compost
- 30% heavier than Compost Filter Sock
- Can be vegetated as permanent device
- Stakes included for every 5-ft
- Minimum 12-in diameter, 5% diagonal fall
- Can be adjusted/moved on jobsite
- Easier than excavating fresh water diversion ditch to install and de-install

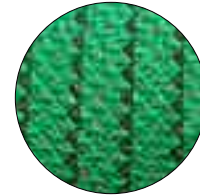


DIVERSIONSOXX™

Compost Diversion Sock

DiversionSoxx Product Specs:

Netting Material Type	Original Pallet Netting Heavy Duty Multi-Filament Polypropylene (MFPP)
Netting Degradation	Photodegradable
Netting Diameters	12", 18", 24"
Netting Opening Size	1/8"
Netting Color	Green w/ Thin Black Stripe
Fabric Tensile Strength (ASTM D4595)¹	546 (Original Netting)
Fill Type	50% Composted Hardwood Mulch/ 50% Leaf Compost
Functional Longevity²	1-2 years
Staking Recommendation	Every 5-ft



Netting Sample



Fill Sample

¹Tensile Strength is based on 12" diameter using ATSM D4595. See Filtrex TechLink #3342 for full tensile strength testing.

²Functional longevity ranges are estimates only. Site specific environmental conditions may result in significantly shorter or longer time periods.

Item List:

Item Number	Diameter	Total Linear Feet per pallet	Unit Length	Units per pallet	Stakes per pallet	Pallet Weight
P12-110-DS	12-in	110-ft	110-ft	1	12	~ 2100 lbs
PB12-110-DS	12-in	110-ft	110-ft	1	12	~ 2100 lbs
PN12-100S10-DS	12-in	100-ft	10-ft	10	0	~ 1950 lbs
PB18-55-DS	18-in	55-ft	55-ft	1	6	~ 2100 lbs
PB24-40-DS	24-in	40-ft	40-ft	1	5	~ 2100 lbs

Shipping Specs:

Pallets per TL	22
Shipping Dimensions	40L x 48W x 66H
Packaging	40 x 48 Pallet with Plastic Stretch-Wrap or Super Sack
Storage Life	Under Roof - 6 months / Outdoors - 3 months

Diameter	Stake Size (Nominal)
12-in	2" x 2" x 24"
18-in	2" x 2" x 36"
24-in	2" x 2" x 42"

INSTALLER NETTING



Easy to Install. Hard to Beat.

Filtrex Netting is the original compost filter sock netting for field installation with blower trucks or track machines. Reliable and durable, multiple netting types ensure the right fit for your job.

REVO Installer Netting (5 mil HDPE)





Stable in both the linear and radial orientation, Revo netting doesn't shrink and won't overfill.

BASIC Installer Netting (5 mil HDPE)

Meet all specs with this versatile, light duty netting that is good for most applications.

BASIC+ Installer Netting (MFPP)

Meets or exceeds specs with higher durability. Available in larger diameter sizes, for any project.

Product Name	REVO Installer Netting	Basic Installer Netting	Basic+ Installer Netting
Netting Material Type	5mil High Density Polyethylene (HDPE)	5mil High Density Polyethylene (HDPE)	Multi-Filament Polypropylene (MFPP)
Uses	On-site blower truck installation		
Netting Opening Size	3/8"	3/8"	3/8"
Diameters	12", 18", 24", 32"	12", 18"	8", 12", 18", 24", 32"
Functional Longevity/Project Duration ¹	up to 1 yr	up to 4 yr	up to 4 yr
Tensile Strength (ASTM D4595) ²	52 lbs*	145 lbs	229 lbs
Packaging	Rings	Rucks	Rucks
Netting Color	 blue/black w/ integrated orange staking dot	 orange/black (12")  red/black (18")	 black

¹Functional longevity ranges are estimates only. Site specific environmental conditions may result in significantly shorter or longer time periods. ²Tensile Strength is based on 12" diameter using ATSM D4595, average of MD & TD. See Filtrex TechLink #3342 for full tensile strength testing. *ASTM 5034



REVO NET

CFS Installer Netting

Revo Net Product Specs:

Netting Material Type	REVO Installer Netting 5mil High Density Polyethylene (HDPE)
Netting Degradation	Photodegradable; UV Stability at 1000 Hours: 50%
Netting Diameters	12", 18", 24", 32"
Netting Opening Size	3/8"
Netting Color	Blue/Black with integrated orange dots at 10-ft increments
Fabric Tensile Strength (ASTM 5034)	52 lbs
Functional Longevity¹	up to 1 year



Netting Sample

¹Functional longevity ranges are estimates only. Site specific environmental conditions may result in significantly shorter or longer time periods.

Item List:

Item Number	Diameter	Unit Type	Length/Unit	Units per box	Units per pallet or Super Sack	Feet per pallet or Super Sack
REVO - 12" Ring	12-in	Ring	125-ft	5 rings	60 rings	7,500-ft
REVO - 18" Ring	18-in	Ring	125-ft	3 rings	36 rings	4,500-ft
REVO - 24" Ring	24-in	Ring	125-ft	2 rings	24 rings	3,000-ft
REVO - 32" Ring	32-in	Ring	125-ft	2 rings	24 rings	3,000-ft

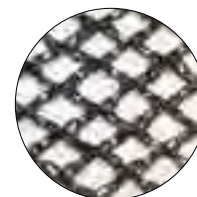
Note: Minimum sales unit is a box. 12 boxes per pallet (Super Sacks have the same ring count as a 12 box pallet)

BASIC NET

CFS Installer Netting

Basic Net Product Specs:

Netting Material Type	BASIC Installer Netting 5mil High Density Polyethylene (HDPE)
Netting Degradation	Photodegradable
Netting Diameters	12", 18"
Netting Opening Size	3/8"
Netting Color	Orange/Black (12"); Red/Black (18")
Fabric Tensile Strength (ASTM D4595)¹	145 lbs
Functional Longevity²	up to 4 years



Netting Sample

¹Tensile Strength is based on 12" diameter using ATSM D4595. See Filtrex TechLink #3342 for full tensile strength testing.

²Functional longevity ranges are estimates only. Site specific environmental conditions may result in significantly shorter or longer time periods.

Item List:

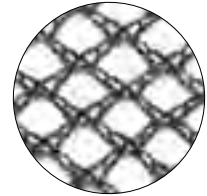
Item Number	Part Reference	Diameter	Unit Type	Length/Unit	Units per pallet	Feet per pallet
Installer - 12" Basic Ruck O-B	430-000253	12-in	Ruck	200-ft	90	18,000-ft
Installer - 18" Basic Ruck R-B	430-000258	18-in	Ruck	200-ft	72	14,400-ft

BASIC+ NET

CFS Installer Netting

Basic+ Net Product Specs:

Netting Material Type	BASIC + Installer Netting Multi-Filament Polypropylene (MFPP)
Netting Degradation	Photodegradable
Netting Diameters	8", 12", 18", 24", 32"
Netting Opening Size	3/8"
Netting Color	Black
Fabric Tensile Strength (ASTM D4595)¹	229 lbs
Functional Longevity²	up to 4 years



Netting Sample

¹Tensile Strength is based on 12" diameter using ASTM D4595. See Filtrex TechLink #3342 for full tensile strength testing.

²Functional longevity ranges are estimates only. Site specific environmental conditions may result in significantly shorter or longer time periods.

Item List:

Item Number	Part Reference	Diameter	Unit Type	Length/Unit	Units per pallet	Feet per pallet
Installer - 8" Basic + Ruck	430-000251	8-in	Ruck	200-ft	112	22,400-ft
Installer - 12" Basic + Ruck	430-000255	12-in	Ruck	200-ft	120	24,000-ft
Installer - 18" Basic + Ruck	430-000260	18-in	Ruck	200-ft	90	18,000-ft
Installer - 24" Basic + Ruck	430-000262	24-in	Ruck	200-ft	70	14,000-ft
Installer - 32" Basic + Ruck	430-000263	32-in	Ruck	200-ft	60	12,000-ft

ROCKSOXX™

Stormwater Filter



Trap sediment from stormwater runoff that flows onto roadways from construction activities.

Weighted, durable, and reusable, RockSock stays put in concentrated flows without trenching, stakes, or anchors. High-strength netting and double hog rings allows for RockSock to be repeatedly run over and moved – and still last the entire job.

Applications include:

- Ditch checks
- Inlet protection
- Gutter-line checks
- Perimeter sediment control repairs

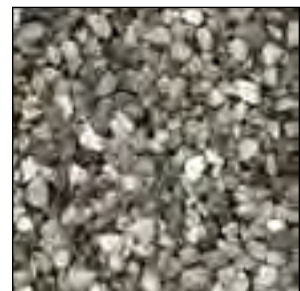
Benefits:

- Modular pieces allow for flexible configurations
- High hydraulic flow to prevent ponding
- Heavy enough to stay in place without anchors
- Netting is a high-flow, high-strength, UV-resistant multi-filament polyester knit textile
- Color is Hi-Vis Safety Orange
- Fill is a 50-50 blend of 1½" (minus) dust-free limestone gravel and composted hardwood chip
- 6-inch pig tails for easy handling
- Double hog ring closure prevents opening

double
pig tails

double
hog rings

36



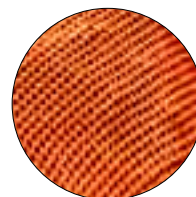
ROCKSOXX™

Stormwater Filter

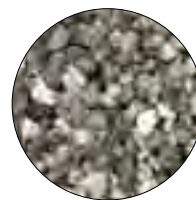
RockSoxx Product Specs:

Netting Material Type	HV-X Heavy Duty Multi-Filament Polyester UV Resistant
Netting Color	Hi-Vis Orange
Netting Diameters	8"
Netting Opening Size	1/8"
End Closure	6-inch pig tails with double hog ring closure
Fabric Tensile Strength (ASTM 5035)	497 psi
Fill Type	50% 1 ½" (minus) dust-free limestone gravel 50% composted hardwood chip
Functional Longevity¹	up to 3 years

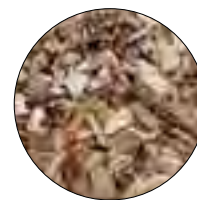
¹Functional longevity ranges are estimates only. Site specific environmental conditions may result in significantly shorter or longer time periods.



Netting Sample



Gravel Fill Sample



Hardwood Chip
Fill Sample

Item List:

Item Number	Diameter	Total Linear Feet per pallet	Unit Length	Units per pallet	Unit Weight	Pallet Weight
RS-8-36	8-in	120-ft	3-ft	40	50 lbs	2000 lbs

Shipping Specs:

Pallets per TL	up to 20
Shipping Dimensions	40L x 48W x 66H
Packaging	40 x 48 Pallet with Plastic Stretch-Wrap
Storage Life	Under Roof - 6 months / Outdoors - 3 months

ROCK LOG

Stormwater Filter



Versatile, weighted BMP that helps minimize runoff on hard surfaces or landscape areas.

Rock Logs are a popular construction site BMP, designed to filter sediment and slow water velocity. This weighted BMP is easy to install on any earth or hard surface and does not require trenching, staking, or anchors. The high-strength, UV-resistant netting ensures that Rock Logs can be moved around while their modular design allows for flexible configurations – simply overlap unit edges as needed. .

Use Rock Logs for common sediment control applications including:

- Ditch checks
- Inlet protection
- Perimeter control

Benefits:

- Durable, UV-resistant netting
- Reusable and modular
- Heavy enough to stay in place without anchors or stakes
- Use on hard surfaces
- Available in 4-ft or 6-ft lengths



ROCK LOG

Stormwater Filter

Rock Log Product Specs:

Fabric Material Type	High Density Polyethylene (HDPE) UV Resistant
Fabric Color	Black
Fabric Diameter	6"
Fabric Apparent Opening	Equivalent Sieve Size: 12
Fabric Breaking Strength Grab Method lbs (ASTM D-4632)	Warp: 137 lbs Fill: 79 lbs
Fabric Breaking Elongation Grab Method % (ASTM D-4632)	Warp: 75.6% Fill: 64.8%
Fabric Puncture Resistance (ASTM D-4833)	66 lbs
Fabric UV Resistance (500 hrs) (ASTM D-4355)	> 70%
Fill Type	Washed 3/4" rock



Netting Sample



Rock Fill Sample

Meets/exceeds spec for WI DOT 628.2.13 Rock Bags.

Item List:

Item Number	Diameter	Total Linear Feet per pallet	Unit Length	Units per pallet	Unit Weight	Pallet Weight
RL-25-4	6-in	100-ft	4-ft	25	~ 61 lbs	~ 1526 lbs
RL-25-6	6-in	150-ft	6-ft	25	~ 97 lbs	~ 2427 lbs

Shipping Specs:

Pallets per TL	up to 20
Shipping Dimensions	49L x 49W x 62H
Packaging	48 x 48 Pallet with Plastic Stretch-Wrap
Storage Life	Under Roof - 6 months / Outdoors - 3 months

ROADWATTLE®

Portable Filter Sock



Sometimes you need a filter sock that can be moved.

RoadWattle is the answer – it's designed for daily portability. Use it across access roads at night, during rainouts, and near stream crossings on pipeline and powerline projects.

RoadWattle is filled with chopped switchgrass – a PADEP - approved alternative fill material for Compost Filter Sock.

RoadWattle weighs 50% less than Compost Filter Sock and is made of heavy duty textile and strapping – enabling the device to be moved again and again.

Comes in Hi-Vis orange for maximum visibility.

Benefits:

- Available in 12 and 18 foot lengths
- Textile is 1/8-inch opening heavy-duty Polyethylene
- Four integrated straps for easy moving
- Fill is chopped switchgrass or pine straw
- Sock quickly dries and is moveable after rain event
- Available coiled on a pallet or in a super sack
- Field longevity of up to one year
- Approved by PA DEP for HQ and EV watersheds
- Can be staked through or driven over (if necessary)
- Available in Hi-Vis orange for maximum visibility

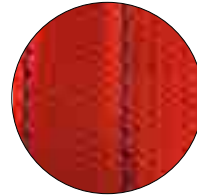


ROADWATTLE®

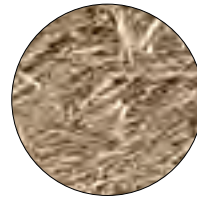
Portable Filter Sock

RoadWattle Product Specs:

Netting Material Type	275g/m ² reinforced slit film Polyethylene
Netting Color	Blaze Orange
End Closure	hog rings -or- zip ties
Handling Straps	4 per unit (blue)
Fabric Tensile Strength (ASTM D 4632)	MD – 267 lbs. TD – 168 lbs.
Elongation at Max Load (ASTM 4632)	MD – 66% TD – 109%
Permittivity g/m/ft ² (ASTM D 4491 C)	180 g/m/ft ²
Fill Type	Switchgrass
Functional Longevity ¹	Up to 1 year



Netting Sample



Fill Sample

¹Functional longevity ranges are estimates only. Site specific environmental conditions may result in significantly shorter or longer time periods.

Item List:

Item Number	Diameter	Total Linear Feet per pallet	Unit Length	Units per pallet	Unit Weight	Pallet Weight
RW95-12-SG	9.5-in	240-ft	12-ft	20	~ 41 lbs	~ 875 lbs
RW95-18-SG	9.5-in	252-ft	18-ft	14	~ 60 lbs	~ 895 lbs
RW12-10-SG	12-in	100-ft	10-ft	10	~ 60 lbs	~ 655 lbs

Shipping Specs:

Pallets per TL	up to 28
Shipping Dimensions	40L x 48W x 66H
Packaging	40 x 48 Pallet; Wattles are strapped together, and pallet is stretch-wrapped
Storage Life	Under Roof - 6 months / Outdoors - 3 months

STORMCATCHER®

Weighted Sediment Filter Tube



Robust, flexible BMP for people and places where performance matters.

StormCatcher is a multipurpose tubular BMP, used where a temporary robust filter berm is needed. The textile is tough and long-lasting.

Filled with a patent-pending heat-treated rice hull mixed with gravel that forms a high flow, high sediment retention 3-dimensional filtering matrix.

Similar products that use old ground up tires just can't do this. Plus, the the biodegradable rice hull media can be left on site, forming a soil amendment – rubber can't.

Benefits:

- Available in 12 and 18 foot lengths
- Textile is 1/8-inch opening heavy-duty Polyethylene
- Four integrated straps for easy moving
- Fill is all-natural rice hulls and gravel
- No sharp wires
- Lighter and easier to handle than rubber-filled wattles
- Field longevity of up to one year
- Available in Hi-Vis orange for maximum visibility

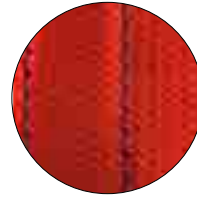


STORMCATCHER®

Weighted Sediment Filter Tube

StormCatcher Product Specs:

Netting Material Type	275g/m ² reinforced slit film PE
Netting Color	Blaze Orange
End Closure	hog rings -or- zip ties
Handling Straps	4 per unit (blue)
Fabric Tensile Strength (ASTM D 4632)	MD – 267 lbs. TD – 168 lbs.
Elongation at Max Load (ASTM 4632)	MD – 66% TD – 109%
Permittivity g/m/ft² (ASTM D 4491 C)	180 g/m/ft ²
Fill Type	Heat-Treated Rice Hulls 50% Gravel fill on 9-inch only
Functional Longevity¹	Up to 1 year



Netting Sample



Rice Hull Fill Sample



Gravel Fill Sample

¹Functional longevity ranges are estimates only. Site specific environmental conditions may result in significantly shorter or longer time periods.

Item List:

Item Number	Diameter	Total Linear Feet per pallet	Unit Length	Units per pallet	Unit Weight	Pallet Weight
WST9-4	9-in	192-ft	4-ft	48	~ 33 lbs	~ 1560 lbs
WST9-8	9-in	192-ft	8-ft	24	~ 65 lbs	~ 1560 lbs
WST9-10	9-in	220-ft	10-ft	22	~ 81 lbs	~ 1782 lbs
WST9-12	9-in	240-ft	12-ft	20	~ 98 lbs	~ 1960 lbs
WST12-10	12-in	100-ft	10-ft	10	~ 115 lbs	~ 1150 lbs

Shipping Specs:

Pallets per TL	up to 20
Shipping Dimensions	40L x 48W x 66H
Packaging	Super Sack
Storage Life	Under Roof - 6 months / Outdoors - 3 months

BLACK HAWK™

Advanced Inlet Filter Mat



Quickly stop sediment and debris from invading inlets during and after construction.

Silt sacks have limited sediment storage capacity and can easily blind whereby causing street flooding. BlackHawk™ has a much higher sediment storage capacity because sediment is kept above the grate. Its unique design – vertically oriented coir fibers, scalloped edging, hi-flow holes, and emergency dewatering plugs – make this device the most robust in its class.

BlackHawk™ is held to the grate with high strength rubberized magnets so installation, servicing, and removal is a snap – no skid steer or backhoe needed. This device can be cleaned and re-used multiple times.

Use for both E&SC and MS-4 Compliance.

Performance Details:

- 1300 GPM hydraulic flow rating (24"x48" grate size)
- Removes 99% .425 mm particle size and larger
- Independent testing shows 87% overall sediment removal
- Works with both Type-M and Type-C inlet configurations
- Mats for 2x2, 2x3, and 2x4 grates are in stock
- Easily cut to size, or custom sizes available with short lead-times

Other Benefits:

- Easy to handle - installs by just laying on the grate
- Much higher sediment storage capacity than bags
- Designed to be highly resistant to blinding and flooding
- Integrated emergency dewatering plugs
- 90% biodegradable content

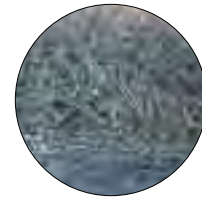


BLACKHAWK™

Advanced Inlet Filter Mat

BlackHawk Product Specs:

Mat Material Type	Natural Coconut Coir Fiber
Mat Color	Blue
Mat Thickness	2-in
Design Features	Scalloped Edges Hi-flow holes Emergency dewatering plugs (2 per mat) Magnetic grate attachment 90% biodegradable content
Inlet Compatibility	Type-M; Type-C
Flow Rating	1300 GPM (24"x48" grate size)
Functional Longevity	Dependant on site conditions & traffic

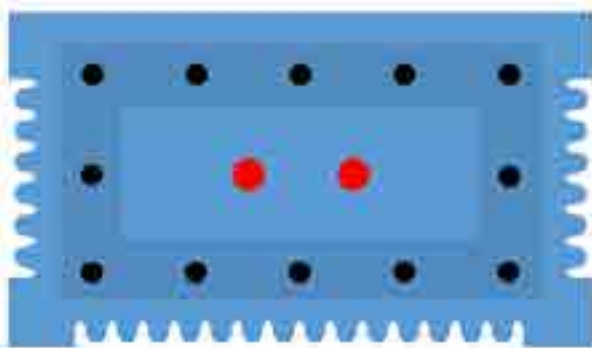


Fiber Sample

Item List:

Item Number	Grate Size	Finished Mat Size	Template	Configuration	Cases per Pallet
BM-2448-T100A	24" x 48"	32" x 54"	T100A	5 Units per Case	7
BM-2424-T200A	24" x 24"	28" x 32.5"	T200A	10 Units per Case	7
BM-1734-T301A	17" x 34"	24.5" x 43.5"s	T301A	5 Units per Case	7
BM-2727-T302A	27" x 27"	28" x 32"	T302A	10 Units per Case	7
BM-2436-T600A	24" x 36"	31.5" x 43.5"	T600A	5 Units per Case	7

Example Configuration:



BM-2448-T100A - Covers 24" x 48" Grate, Type-C or Type-M Inlet

FRYEFLOW CBX

Curb Box Inlet Filter Bag



Achieve Complete Framed Inlet Protection with FryeFlow CBX.

With its under-grate installation and easy cleaning, FryeFlow CBX (Curb Box) offers superior sediment control through its patented frame + basket design. Not only does it outperform competing products in terms of keeping streets cleaner, but it also significantly reduces silt accumulation by maintaining better flow.

Meets specifications for Framed Inlet Protection.

Maintaining FryeFlow is a breeze. Simply remove the grate, attach a lifting device to the webbing strips, lift out and dump debris. Alternatively, a vac-ter unit can be used. Our reusable bags should be monitored after each storm event to ensure optimal performance.

Available as pre-assembled, welded units or Assembly Kits for ease of frame reuse.

FryeFlow CBX Benefits:

- Installation raises the inlet grate by 1/8"
- 100% of Inlet Device is below the grate and protected from damage
- Device reaches back into the curb box
- Triple flow rates and filtration
- Woven geotextile & steel frame provide reliable strength
- Designed to greatly reduce ponding in streets
- Easy to install & maintain; won't fall into grate

FryeFlow CBX Assembly Kit Option:

- Economical: Reusable frame, replace bags as needed
- Purchase replacement bags separately
- Easy to assemble kit includes: frame bars, Z brackets, nuts, bolts, washers

FryeFlow Assembly Kit



FRYEFLOW CBX

Curb Box Inlet Filter Bag

FryeFlow CBX Inlet Filter Bag Product Specs:

Bag Material Type	Woven Polypropylene Geotextile		
Frame Material Type	Steel		
Fabric Property	Test Method	Unit	M.A.R.V.
Grab Tensile	ASTM D-4632	Lbs. (kN)	365 x 200 (1.62 x 0.89)
Grab Elongation	ASTM D-4632	%	15
Trap Tear	ASTM D-4533	Lbs. (kN)	115 x 75 (0.51 x 0.33)
CBR Puncture Resistance	ASTM D-6241	Lbs. (kN)	675 (3.00)
Apparent Opening Size (AOS)*	ASTM D-4751	US Std. Sieve (mm)	40 (0.425)
Permittivity*	ASTM D-4491	Sec ⁻¹	2.1
Water Flow Rate*	ASTM D-4491	gpm/ft ² (l/min/sm)	145 (5907)
UV Resistance	ASTM D-4355	%/hrs	90/500
Mullen Burst	ASTM D-3786	psi	450

*At the time of manufacturing. Handling may change these properties.

Item List:

Item Number	Description
FF-IB-3067-CBX-Welded	Welded Unit - Inlet Bag with Frame - Casting 3067
FF-IB-3067-CBX-KIT	Assembly Kit - Inlet Bag with Frame - Casting 3067
FF-IB-3067-CBX-RB	Replacement Inlet Bag - Casting 3067 (frame not included)
FF-Frame-3067-CBX-KIT	Assembly Kit - Frame - Casting 3067 (inlet bag not included)

Frame Assembly Kit Includes:

- (4) Frame Bars (with pre-drilled holes)
- (4) Z Brackets
- (8) Bolts
- (8) Nuts
- (8) Lock Washers



FRYEFLOW

Inlet Filter Bag



Keep construction dirt out of storm drains while still allowing water to pass through.

With its under-grate installation and easy cleaning, FryeFlow offers superior sediment control through its patented frame + basket design. Not only does it outperform competing products in terms of keeping streets cleaner, but it also significantly reduces silt accumulation by maintaining better flow.

Maintaining FryeFlow is a breeze. Simply remove the grate, attach a lifting device to the webbing strips, lift out and dump debris. Alternatively, a vac-ter unit can be used. Our reusable units should be monitored after each storm event to ensure optimal performance.

Upgrade to FryeFlow today and experience the benefits of a cleaner, more effective sediment control solution.

Benefits:

- Woven geotextile & steel frame provide reliable strength
- Designed to greatly reduce ponding in streets
- Easy to install & maintain; won't fall into grate
- Reusable system
- System is protected from damage from traffic



FRYEFLOW

Inlet Filter Bag

FryeFlow Inlet Filter Bag Product Specs:

Bag Material Type	Woven Polypropylene Geotextile		
Frame Material Type	Steel		
Fabric Property	Test Method	Unit	M.A.R.V.
Grab Tensile	ASTM D-4632	Lbs. (kN)	365 x 200 (1.62 x 0.89)
Grab Elongation	ASTM D-4632	%	15
Trap Tear	ASTM D-4533	Lbs. (kN)	115 x 75 (0.51 x 0.33)
CBR Puncture Resistance	ASTM D-6241	Lbs. (kN)	675 (3.00)
Apparent Opening Size (AOS)*	ASTM D-4751	US Std. Sieve (mm)	40 (0.425)
Permittivity*	ASTM D-4491	Sec ⁻¹	2.1
Water Flow Rate*	ASTM D-4491	gpm/ft ² (l/min/sm)	145 (5907)
UV Resistance	ASTM D-4355	%/hrs	90/500
Mullen Burst	ASTM D-3786	psi	450

*At the time of manufacturing. Handling may change these properties.

Item List:

Frye Flow Inlet Bag with Frame	
Item Number	Description
FF-IB-16-17	16" x 17"
FF-IB-16-30-CG	16" x 30" Curb and Gutter
FF-IB-16-30X2	16" x 30" Double Bag with Bonnet
FF-IB-16-35-CG	16" x 35" Curb and Gutter
FF-IB-18-30	18" x 30"
FF-IB-18-36	18" x 36"
FF-IB-20-36DE	20" x 36"
FF-IB-21-47	21" x 47"
FF-IB-22-22	22" x 22"
FF-IB-2-3	2' x 3'
FF-IB-23-23	2' x 2'
FF-IB-24-24	27" x 27"
FF-IB-2R	2' Round

Frye Flow Inlet Bag with Frame	
Item Number	Description
FF-IB-30-30	30" x 30"
FF-IB-32-34-WR	32" x 34" WR Maryland Bag
FF-IB-38-38	38" x 38"
FF-IB-3R	3' Round
FF-IB-V7045	Casting V7045
FF-IB-15-34	15" X 34" Casting 7505
FF-IB-7750	Casting 7750
FF-IB-V4520-BF	Casting V4520 with Bent Frame
FF-IB-7390-BF	Casting 7390 with Bent Frame
FF-IB-7730-BF	Casting 7730 with Bent Frame

Frye Flow Bonnet Guard Replacements	
Item Number	Description
FF-16-35-Bonnet	16" x 35" Bag
FF-2-3-Bonnet	2' x 3' Bag

Inlet Bags

Inlet Bag Product Specs:

Bag Material Type	Woven Polypropylene Geotextile		
Fabric Property	Test Method	Unit	M.A.R.V.
Grab Tensile	ASTM D-4632	Lbs. (kN)	365 x 200 (1.62 x 0.89)
Grab Elongation	ASTM D-4632	%	15
Trap Tear	ASTM D-4533	Lbs. (kN)	115 x 75 (0.51 x 0.33)
CBR Puncture Resistance	ASTM D-6241	Lbs. (kN)	675 (3.00)
Apparent Opening Size (AOS)*	ASTM D-4751	US Std. Sieve (mm)	40 (0.425)
Permittivity*	ASTM D-4491	Sec ⁻¹	2.1
Water Flow Rate*	ASTM D-4491	gpm/ft ²	230
UV Resistance	ASTM D-4355	%/hrs	90/500
Mullen Burst	ASTM D-3786	psi	450

*At the time of manufacturing. Handling may change these properties.

Item List:

Item Number	Description
FF-IB-2-2-JB	Inlet Bag 2' x 2'
FF-IB-2-3-JB	Inlet Bag 2' x 3'
FF-IB-2-4-JB	Inlet Bag 2' x 4'
FF-IB-4-4-JB	Inlet Bag 4' x 4'

FRYEFLOW

Concrete Washout Solution



NEW & Improved Bag Design



Easily contain & manage harmful or hazardous construction site materials.

The FryeFlow Concrete Washout Solution is a state-of-the-art washout pit and water silt separator designed to tackle the challenges of construction site materials. With its portable dewatering container and optional sturdy stainless steel frame, FryeFlow offers the perfect solution for containing and managing harmful or hazardous materials.

Various sizes makes it suitable for construction projects of any scale. By using the FryeFlow system, you can ensure compliance with regulations while optimizing your budget and controlling costs. Invest in the FryeFlow Concrete Washout Solution for a reusable, all-weather system that guarantees both durability and efficiency on every construction site.

Benefits:

- Safe Working Load: 3,000 lbs
- Woven Polypropylene geotextile provides reliable strength
- Pyramid-style open top allows for easy filling
- Sewn-in 3 mil plastic liner and non-leak seams
- Installs in minutes
- Loop handles for ease of moving
- Optional reusable stainless steel frame; replacement bags available

Uses:

- Concrete
- Stucco, Mortar
- Paint
- Other potentially hazardous materials



FRYEFLOW

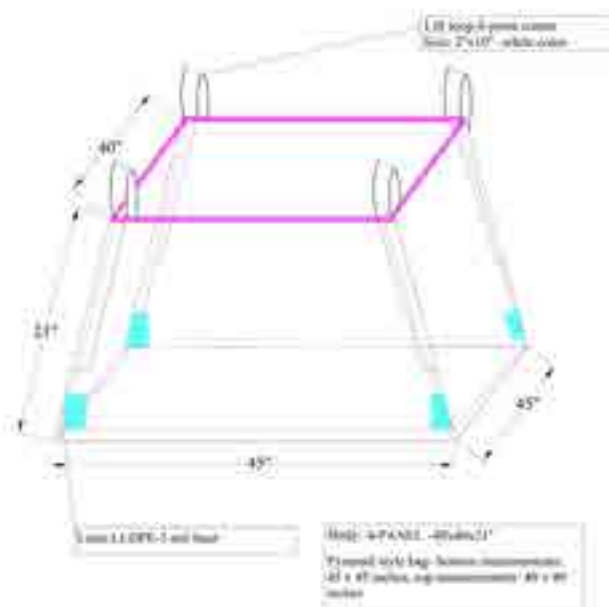
Concrete Washout Solution

FryeFlow Concrete Washout Product Specs:

Bag Material Type	Woven Polypropylene Geotextile (Coated)
Bag Construction Type	Pyramid Style
Bag Capacity	25 Cubic Feet or 185 Gallons
Bag Size	Length: 40" Bottom 32" Top Width: 40" Bottom 32" Top Height: 24"
Safe Working Load	3,000 lbs
Safety Factor	5:1
UV Resistance	50% over 200 hrs
Lift Loops	4-point corner; 2"x10" polypropylene
Liner Material Type	LLDPE 3 mil (Sewn-in)
Frame Material Type (optional)	Stainless Steel

Item List:

Item Number	Description
FF-SS-WOP	Frye Flow Lined Concrete Washout Pit 40"x40"x24" (no frame)
FF-WOP-4-6	Frye Flow Concrete Washout Complete Kit with Frame 4' x 6'
FF-WOP-4-6-RB	Frye Flow Inlet Bag 4' x 6' Replacement Concrete Washout Bag (no frame)



SILTRON®

Advanced Silt Fence



Designed to provide the highest level of environmental protection on a construction site – no excuses and no compromises.

Independent testing shows industry leading performance in hydraulic flow under sediment load, sediment retention, and blinding resistance (TRI Environmental Testing).

Silttron functions as a dynamic filter-ponder which allows it to adjust to changing stormwater intensity across the entire face of the composite geotextile. Other fencing products either blind too fast (leading to physical failure) or allow too much sediment through.

Silttron uses a textured non-woven pre-filter designed to resist blinding and keep seeping long after the other products are blinded and physically failing. Even under extreme water and sediment load, Silttron keeps seeping.

Structural Details:

- Oak stakes with construction-grade staples
- Integrated anti-push spades for stake stability
- Strong 3-layer composite means no wire backer
- Highly resistant to blinding, punctures and tears

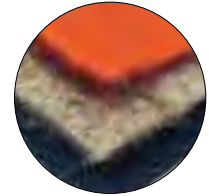
Other Benefits:

- Installs with just a skidsteer trenching attachment
- Grabs hydrocarbons and other viscous pollutants
- True 18-36 month functional longevity
- For use on pipelines, powerlines, brownfield sites, and in any quality watershed (HQ and EV)



Siltron Product Specs:

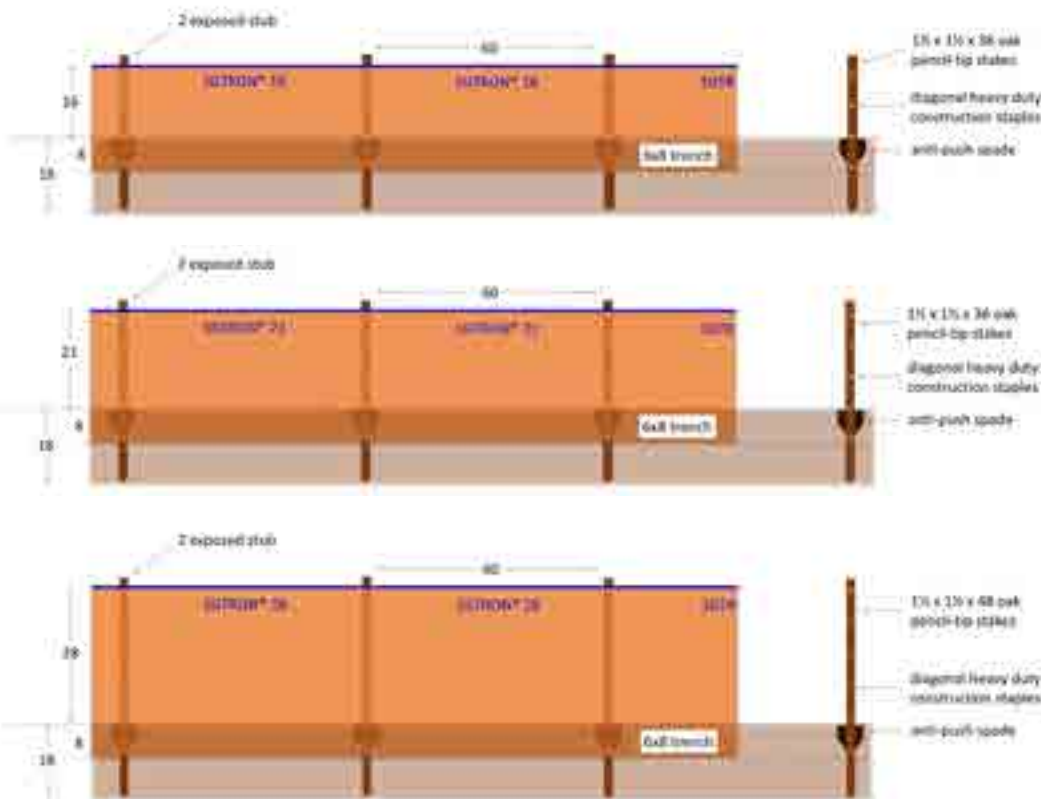
Material Type	Triple Layer Composite: Non-Woven Pre-Filter, Natural Fiber, Mono-filament Backer
Color	Orange
Functional Longevity	True 18-36 months
Design Features	Needle punched Anti-push spade stakes Top belting reinforcement Transmissivity cut-off/bury line indicator



Material Sample

Item List:

Item Number	Above Ground Height	Linear Feet per Bundle	Linear Feet per Pallet	Configuration
STN-16-PSB	16-inch	50-ft	500-ft	10 Pre-staked Bundles
STN-21-PSB	24-inch	50-ft	500-ft	10 Pre-staked Bundles
STN-28-PSB	28-inch	50-ft	500-ft	10 Pre-staked Bundles



SILT FENCE



Trap sediment from your worksite with MKB Silt Fence products.

Silt Fence is a commonly specified, economical sediment control BMP, designed to provide perimeter control from construction site runoff. Silt fence helps to slow runoff, in order to retain sediments such as silt, clay, and sand, during land disturbing activities.

MKB Company manufactures a variety of Silt Fence products using UV-stabilized woven geotextile materials and hardwood stakes.

Keep soils on your site and prevent sediment from entering waterways with MKB Silt Fence products.

Contact us for more information about silt fence specifications, approvals in your state, and custom printing options.

Available Configurations:

- Fabric Heights: 24", 30", 36" and 42"
- Fabric Weights: 60 gram, 70 gram, 100 gram
- Stake Heights: 36", 42", and 48"
- Stake Sizes: 1 1/8", 1 1/4", 1 3/8", and 1 1/2"
- Hardwood or Softwood Stakes
- Custom printing available

Benefits:

- Temporary sediment barrier helps keep soil on site
- Economical & easy to install
- Will not degrade
- Use with other sediment control BMPs to increase removal rates



WOODEN STAKES



Benefits:

- Variety of Hardwood, Softwood, and Concrete stakes
- Professional Grade
- Used for Building Supplies, Silt Fence Installation, Construction and Engineering
- Thick stakes won't break during installation

HARDWOOD STAKES

ITEM NUMBER	Size
Stake-1-1/8-24-HW	1 1/8" x 24" pack of 25
Stake-1-1/8-30-HW	1 1/8" x 30" pack of 25
Stake-1-1/8-32-HW	1 1/8" x 32"
Stake-1-1/8-36-HW	1 1/8" x 36"
Stake-1-1/8-48-HW	1 1/8" x 48"
Stake-1-3/16-48-HW	1 3/16" x 48"
Stake-1-1/4-24-HW	1 1/4" x 24" pack of 25
Stake-1-1/4-30-HW	1 1/4" x 30" pack of 25
Stake-1-1/4-36-HW	1 1/4" x 36"
Stake-1-1/4-42-HW	1 1/4" x 42"
Stake-1-1/4-48-HW	1 1/4" x 48"
Stake-1-3/8-24-HW	1 3/8" x 24" pack of 25
Stake-1-3/8-36-HW	1 3/8" x 36"
Stake-1-3/8-42-HW	1 3/8" x 42"
Stake-1-3/8-48-HW	1 3/8" x 48"
Stake-1-1/2-24-HW	1 1/2" x 24" pack of 25
Stake-1-1/2-36-HW	1 1/2" x 36"
Stake-1-1/2-42-HW	1 1/2" x 42"
Stake-1-1/2-48-HW	1 1/2" x 48"
Stake-2-2-60-HW	2" x 60"

SOFTWOOD STAKES

ITEM NUMBER	Size
Stake-2-2-24-SW	2" x 24" pack of 25
Stake-2-2-36-SW	2" x 36"
Stake-2-2-48-SW	2" x 48"

CONCRETE STAKES

ITEM NUMBER	Size
Stake-CS-5/4-24	5/4" x 24" pack of 20
Stake-CS-5/4-36	5/4" x 36" pack of 20
Stake-CS-6/4-24	6/4" x 24" pack of 20
Stake-CS-6/4-36	6/4" x 36" pack of 20

EROSIONTECH



Rolled Erosion Control Products for temporary and permanent slope and channel stabilization.

Vegetative growth is critical to the restoration of job sites. ErosionTech by MKB strives to make quality, third-party tested products that protect your investment. Available in a variety of fills, nettings, longevities, and roll sizes.

- Rapid Degredation Blankets
- Short-Term Blankets
- Extended-Term and Long-Term Blankets
- Permanent Turf Reinforcement Matting
- Single Net
- Double Net
- Triple Net
- Biodegradable Net
- Straw
- Excelsior
- Coir
- Synthetic (TRMs)





PRODUCT CATEGORY	FILL	NETTING LAYERS	NETTING MATERIAL, COLOR	DEGREDDATION TYPE	FUNCTIONAL LONGEVITY	TYPICAL APPLICATION	FHWA-FP03 ECTC CATEGORY	SHEAR STRESS (lbs/ft²)
STRAW EROSION CONTROL BLANKETS								
ETRS-1-RD	100% straw	Single	polypropylene, white	accelerated photodegradable	90 DAYS	4:1 to 3:1 Slopes, Low Flow Channels	1.C	2.05
ETRS-2-RD	100% straw	Double	polypropylene, white	accelerated photodegradable	90 DAYS	3:1 to 2:1 Slopes, Medium Flow Channels	1.D	2.0
ETRS-1	100% straw	Single	polypropylene, green	photodegradable	12 MO.	4:1 to 3:1 Slopes, Low Flow Channels	2.C	2.05
ETRS-2	100% straw	Double	polypropylene, green	photodegradable	12 MO.	3:1 to 2:1 Slopes, Medium Flow Channels	2.D	2.0
ETRS-1-BN	100% straw	Single	jute, natural	biodegradable	12 MO.	4:1 to 3:1 Slopes, Low Flow Channels	2.C	ND
ETRS-2-BN	100% straw	Double	jute, natural	biodegradable	12 MO.	3:1 to 2:1 Slopes, Medium Flow Channels	2.D	2.02
EXCELSIOR EROSION CONTROL BLANKETS								
ETX-1	100% wood excelsior	Single	polypropylene, green	photodegradable	12 MO.	3:1 to 2:1 Slopes, Medium Flow Channels	2.C	ND
ETX-2	100% wood excelsior	Double	polypropylene, green	photodegradable	12 MO.	2:1 to 1:1 Slopes, Medium Flow Channels	2.D	2.5
ETX-1-BN	100% wood excelsior	Single	jute, natural	biodegradable	12 MO.	3:1 to 2:1 Slopes, Medium Flow Channels	2.C	ND
ETX-2-BN	100% wood excelsior	Double	jute, natural	biodegradable	12 MO.	2:1 to 1:1 Slopes, Medium Flow Channels	2.D	ND
ETX-2-HV	100% wood excelsior	Double	polypropylene, green	photodegradable	12 MO.	1:1 and Greater Slopes, High Flow Channels	2.D	ND
ETX-2-HVBN	100% wood excelsior	Double	jute, natural	biodegradable	12 MO.	1:1 and Greater Slopes, High Flow Channels	2.D	ND
COIR EROSION CONTROL BLANKETS								
ETSC-7030	70% straw 30% coconut coir	Double	polypropylene, green	photodegradable	24 MO.	2:1 to 1:1 Slopes, Medium Flow Channels	3.B	2.5
ETSC-7030-BN	70% straw 30% coconut coir	Double	jute, natural	biodegradable	12 MO.	2:1 to 1:1 Slopes, Medium Flow Channels	3.B	2.0
ETC-100	100% coconut coir	Double	polypropylene, green	photodegradable	36 MO.	1:1 and Greater Slopes, High Flow Channels	4	ND
ETC-100-BN	100% coconut coir	Double	jute, natural	biodegradable	24 MO.	1:1 and Greater Slopes, High Flow Channels	4	2.32
PERMANENT TURF REINFORCEMENT MATS								
ETPP-8	100% synthetic UV stabilized fill 8oz/yd^2	Double	UV stabilized polypropylene			1:1 and Greater Slopes, Medium to High Flow Channels, Stream Banks, Shorelines	5A,	ND
ETPP-10	100% synthetic UV stabilized fill 10oz/yd^2	Double	UV stabilized polypropylene				5A, 5B, 5C	13.0 (vegetated)
ETPP-12	100% synthetic UV stabilized fill 12oz/yd^2	Double	UV stabilized polypropylene				5C	ND
ETTT-PP	100% synthetic	Triple	UV stabilized polypropylene				3B	2.32
ETTT-SC	70% straw 30% coconut coir	Triple	UV stabilized polypropylene				5A, 5B, 5C, 5D	2.39
ETTT-C	100% coconut coir	Triple	UV stabilized polypropylene				3B	2.4

STRAW RECP

Straw RECP Item List:

Product Category	Item Number	Roll Dimension (ft)	SY/Roll	Rolls/Pallet	Rolls/TL	SY/TL
ETRS-1	ETRS-1-50	4x112.5	50	25	1,300	65,000
	ETRS-1-100	8x112.5	100	25	650	65,000
	ETRS-1-200	16x112.5	200	25	300	60,000
	ETRS-1-500	8x562.5	500	4	104	52,000
	ETRS-1-1000	16x562.5	1,000	4	48	48,000
ETRS-1-BN	ETRS-1-50-BN	4x112.5	50	25	1,300	65,000
	ETRS-1-100-BN	8x112.5	100	25	650	65,000
	ETRS-1-200-BN	16x112.5	200	25	300	60,000
	ETRS-1-300-BN	8x337.5	300	9	234	70,200
	ETRS-1-500-BN	8x562.5	500	4	104	52,000
	ETRS-1-1000-BN	16x562.5	1,000	4	48	48,000
ETRS-1-RD	ETRS-1-50-RD	4x112.5	50	25	1,300	65,000
	ETRS-1-100-RD	8x112.5	100	25	650	65,000
	ETRS-1-200-RD	16x112.5	200	25	300	60,000
	ETRS-1-300-RD	8x337.5	300	9	234	70,200
	ETRS-1-500-RD	8x562.5	500	4	104	52,000
	ETRS-1-1000-RD	16x562.5	1,000	4	48	48,000
ETRS-2	ETRS-2-50	4x112.5	50	25	1,300	65,000
	ETRS-2-100	8x112.5	100	25	650	65,000
	ETRS-2-200	16x112.5	200	25	300	60,000
	ETRS-2-500	8x562.5	500	4	104	52,000
	ETRS-2-1000	16x562.5	1,000	4	48	48,000
ETRS-2-BN	ETRS-2-50-BN	4x112.5	50	25	1,300	65,000
	ETRS-2-100-BN	8x112.5	100	25	650	65,000
	ETRS-2-200-BN	16x112.5	200	25	300	60,000
	ETRS-2-500-BN	8x562.5	500	4	104	52,000
	ETRS-2-1000-BN	16x562.5	1,000	4	48	48,000
ETRS-2-RD	ETRS-2-50-RD	4x112.5	50	25	1,300	65,000
	ETRS-2-100-RD	8x112.5	100	25	650	65,000
	ETRS-2-200-RD	16x112.5	200	25	300	60,000
	ETRS-2-500-RD	8x562.5	500	4	104	52,000
	ETRS-2-1000-RD	16x562.5	1,000	4	48	48,000

EXCELSIOR RECP

Excelsior RECP Item List:

Product Category	Item Number	Roll Dimension (ft)	SY/Roll	Rolls/Pallet	Rolls/TL	SY/TL
ETX-1	ETX-1-50	4x112.5	50	25	1,300	65,000
	ETX-1-100	8x112.5	100	25	650	65,000
	ETX-1-200	16x112.5	200	25	300	60,000
	ETX-1-500	8x562.5	500	4	104	52,000
	ETX-1-1000	16x562.5	1,000	4	48	48,000
ETX-2	ETX-2-50	4x112.5	50	25	1,300	65,000
	ETX-2-100	8x112.5	100	25	650	65,000
	ETX-2-200	16x112.5	200	25	300	60,000
	ETX-2-500	8x562.5	500	4	104	52,000
	ETX-2-1000	16x562.5	1,000	4	48	48,000
ETX-1-BN	ETX-1-100-BN	8x112.5	100	25	650	65,000
	ETX-1-200-BN	16x112.5	200	25	300	60,000
ETX-2-BN	ETX-2-100-BN	8x112.5	100	25	650	65,000
	ETX-2-200-BN	16x112.5	200	25	300	60,000
	ETX-2-500-BN	8x562.5	500	4	104	52,000
	ETX-2-1000-BN	16x562.5	1,000	4	48	48,000
ETX-2-HV	ETX-2-100-HV	8x112.5	100	16	416	41,600
	ETX-2-200-HV	16x112.5	200	16	192	38,400
	ETX-2-400-HV	8x450	400	4	108	41,600
	ETX-2-800-HV	16x450	800	4	48	38,400
ETX-2-HVBN	ETX-2-80-HVBN	8x90	80	16	416	33,280
	ETX-2-160-HVBN	16x90	160	16	192	30,720
	ETX-2-300-HVBN	8x337.5	300	4	104	31,200
	ETX-2-600-HVBN	16x337.5	600	4	96	57,600



COIR RECP

Coir RECP Item List:

Product Category	Item Number	Roll Dimension (ft)	SY/Roll	Rolls/Pallet	Rolls/TL	SY/TL
ETSC-7030	ETSC-7030-100	8x112.5	100	25	650	65,000
	ETSC-7030-200	16x112.5	200	25	300	60,000
	ETSC-7030-500	8x562.5	500	4	104	52,000
	ETSC-7030-1000	16x562.5	1,000	4	48	48,000
ETSC-7030-BN	ETSC-7030-50-BN	4x112.5	50	25	1300	65,000
	ETSC-7030-100-BN	8x112.5	100	25	650	65,000
	ETSC-7030-200-BN	16x112.5	200	25	300	60,000
	ETSC-7030-500-BN	8x562.5	500	4	104	52,000
	ETSC-7030-1000-BN	16x562.5	1,000	4	48	48,000
ETC-100	ETC-100	8x112.5	100	25	650	65,000
	ETC-200	16x112.5	200	25	300	60,000
	ETC-500	8x562.5	500	4	104	52,000
	ETC-1000	16x562.5	1,000	4	48	48,000
ETC-100-BN	ETC-100-BN	8x112.5	100	25	650	65,000
	ETC-200-BN	16x112.5	200	25	300	60,000
	ETC-500-BN	8x562.5	500	4	104	52,000
	ETC-1000-BN	16x562.5	1,000	4	48	48,000



PERMANENT TRM

Permanent TRM Item List:

Product Category	Item Number	Roll Dimension (ft)	SY/Roll	Rolls/Pallet	Rolls/TL	SY/TL
ETPP-8	ETPP-8-100	8x112.5	100	20	520	52,000
ETPP-10	ETPP-10-100	8x112.5	100	9	234	23,400
	ETPP-10-200	16x112.5	200	16	192	38,400
ETPP-12	ETPP-12-100	8x112.5	100	16	416	41,600
ETTT-PP	ETTT-PP100	8x112.5	100	9	234	23,400
ETTT-SC	ETTT-SC100	8x112.5	100	9	234	23,400
	ETTT-SC200	16x112.5	200	9	108	21,600
ETTT-C	ETTT-C100	8x112.5	100	9	234	23,400

GEOTEXTILES



A variety of Geotextiles, in stock for your next project.

Geotextiles are commonly used in civil engineering projects including roads, railways, drainage, agriculture, coastal work, and more.

MKB carries a wide variety of geotextiles:

- Non-Woven Fabrics
- Woven Stabilization Fabrics
- Woven Monofilaments
- Geogrids

Want to make your project material ordering easier? We make it simple to add geotextiles to your mixed truckload order.

Geotextile Functions:

- Filtration
- Drainage
- Reinforcement
- Cushion
- Waterproofing
- Separation



GEOTEXTILES

NON-WOVEN FABRICS

Item Number	Description	SY per Roll
GN310-125-360	12.5 x 360 3.2oz Non Woven	500
GN350-125-360	12.5 x 360 3.5oz Non Woven	500
GN400-125-360	12.5 x 360 4oz Non Woven	500
GN450-125-360	12.5 x 360 4.5oz Non Woven	500
GN600-125-360	12.5 x 360 6oz Non Woven	500
GN180-150-300	15 x 300 8oz Non Woven	500
GE110-150-300	15 x 300 10oz Non Woven	500
GE112-150-300	15 x 300 PADOT Class 4A	500
GN116-150-150	15 x 150 16oz Non Woven	250
GN310-003-360	3 x 360 Non Woven Filter Fabric	120
GN310-004-360	4 x 360 Non Woven Filter Fabric	160
GN310-625-360	6.25 x 360 Non Woven Filter Fabric	250
GN310-077-360	7.5 x 360 Non Woven Filter Fabric	300

WOVEN STABILIZATION FABRICS

Item Number	Description	SY per Roll
GW200-125-432	12.5 x 432 200# PA DOT Class 3	600
GW200-125-054	12.5 x 54 200# Woven Geotextile	75
GW300-125-360	12.5 x 360 300# Woven Geotextile	500
GW550-150-300	15 x 300 Woven MS Geotextile	500
GW440-150-300	15 x 300 PADOT Class 4C	500

WOVEN MONOFILAMENTS

Item Number	Description	SY per Roll
GM404-120-300	12 x 300 PADOT Class 1	400
GM706-006-300	6 x 300 Woven Monofilament	200

GEOGRIDS

Item Number	Description	SY per Roll
GG11-1295-246	13.1 x 246 Base Geogrid	358
GG12-1295-164	13.1 x 164 Base Geogrid	239

STAPLES & PINS



Keep your jobsite secure with a variety of staples & pins.

MKB Company sources a wide variety of staples and pins for securing erosion control blankets, geotextiles, landscape fabrics, weed barriers, and more.

Perfect For:

- Erosion Control Blankets
- Landscape Fabric
- Geotextile Blanket
- Sod

Available in a variety of bulk cartons or retail bag sizes and retail displays.

STAPLES BY THE CARTON		
ITEM NUMBER	DESCRIPTION	QTY/BOX
ETST-6	6"x1"x6" 11 gauge sod staples	1000
ETST-8	8"x1"x8" 8 gauge sod staples	500
ETST-6RDT	6" 11 gauge round top staples / sod pins	1000
ETST-6RDT	6" 11 gauge round top staples / sod pins	1000
ETST-8RDT	8" 11 gauge round top staple / sod pins	1000
ETST-6WOOD	6" wood sod pins	1000
ETST-12WOOD	12" wood sod pins	500
Bag of 4' Steel Staples	Bag of 4" Steel Staples (25/bag)	10 packs
Bag of 6' Steel Staples	Bag of 6" Steel Staples (25/bag)	10 packs
Box of 4' Steel Staples	4" Steel Blanket Staples	1000
Box of 6' Steel Staples	6" Steel Blanket Staples	1000
Staple Setter 11 gauge	Staple Setter Staple Driver Tool	



StapleSetter Staple Tool

HEAVY DUTY

BUILT TO TAKE A BEATING
AND KEEP WORKING HARD

EASY TO USE



COMPATIBLE WITH 11 GAUGE,
1" CROWN STEEL STAPLES OF
ANY LENGTH

COMFORT GRIP
MEANS HAPPY HANDS

PERFECT FOR:

- Erosion Control Blankets
- Landscape Fabric
- Geotextile Blanket
- Sod
- Wet Areas
- Rough Terrain
- Tight Spots

Item Number:
Staple Setter 11 gauge



3 LBS
LIGHTWEIGHT

**The productivity powerhouse
Staple Tool every site needs.**

StapleSetter is the staple tool that can meet the demands of the job site. StapleSetter has the combination of rugged strength and reliable specs to exceed your highest standards. It pushes staples into the ground so you don't have to.

Benefits:

- Magnetic head attaches to staples
- 42" long & comfort grip
- No moving parts
- Pushes staples all the way into the ground

Retail Display Units Available:





Secure your next erosion control project, naturally.

GreenStakes are natural, biobased, compostable landscaping staples used for erosion control, landscaping, gardening, golf course maintenance & more.

Tough & Reliable: Designed to penetrate even the hardest ground, while being shatter resistant. According to independent testing, 4" GreenStakes have 45% more holding power than 6" metal stakes.

Better for the Environment: Made of natural, plant based materials, GreenStake complies with ASTM D6400 compostable standard.

Safe & Efficient: GreenStakes are safer than metal staples for both people and machines. Use them and forget about them – they'll keep gripping before completely disappearing, greatly reducing labor costs.

Multiuse Staples:

The 4-inch or 6-inch GreenStake staples can be used for a variety of applications, including pinning erosion control blankets, turf sod, seeded blankets, and netting.

Available in bulk boxes or retail bags.

GREENSTAKE STAPLES		
ITEM NUMBER	Size	QTY
ETST-4BIO	4"	500/box
GS410	4"	10/bag
GS425	4"	25/bag
ETST-6BIO	6"	500/box
GS610	6"	10/bag
GS625	6"	25/bag

Available from 15 US Distribution Locations





by **SetterTech™**

GreenDriver Staple Tool

HEAVY DUTY

BUILT TO TAKE A BEATING
AND KEEP WORKING HARD

USE WITH



GreenStake®

COMPATIBLE WITH

4" and 6" GreenStake Staples

COMFORT GRIP

MEANS HAPPY HANDS

PERFECT FOR:

- Erosion Control Blankets
- Landscape Fabric
- Geotextile Blanket
- Sod

Item Number:
Green Stake Driver



4 LBS LIGHTWEIGHT

The productivity powerhouse Staple Tool every site needs.

GreenDriver is the staple tool that can meet the demands of the job site. GreenDriver has the combination of rugged strength and reliable specs to exceed your highest standards. It pushes staples into the ground so you don't have to.

Specifically designed to work seamlessly with 4" and 6" GreenStake staples.

Benefits:

- 46" long & comfort grip
- No moving parts
- Pushes staples all the way into the ground

Retail Display Units Available:



STRAW WATTLE

Common Straw Wattle



The flexible BMP option for a variety of sediment & erosion control projects.

Our weed-free Straw Wattles provide perimeter protection along contours or at the base of slopes, inlets, and roadways to reduce soil erosion and runoff, and retain sediment.

Regularly specified on construction sites, "Common" Straw Wattle is comprised of UV-Stabilized extruded netting and weed-free agricultural straw fill. Straw Wattles are an extremely flexible BMP, and easily conform to soil surfaces. Secure wattles by staking and trenching according to site requirements.

MKB Straw Wattles are available in a variety of diameters & lengths for any project.

Applications:

- Perimeters
- Slopes
- Ditches

Benefits:

- Uses traditional UV Stabilized extruded netting
- Lightweight & easy to handle
- Economical & commonly specified
- Efficient quantities per pallet & truckload
- 6", 9", 12" diameters

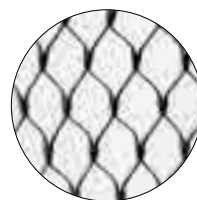


STRAW WATTLE

Common Straw Wattle

Common Straw Wattle Product Specs:

Netting Material Type	Common Wattle Netting Extruded HDPE High Density Polyethelene Oriented Net
Netting Degradation	UV Stabilized Photodegradable
Netting Diameters	6", 9", 12"
Netting Opening Size/Shape	3/4" / Diamond
Netting Color	Black or White (Clear)
Fabric Tensile Strength (Test Method MN-TS-003-06)	5.4 lbs/strand (9") 4.6 lbs/strand (12") 4.1 lbs/strand (18/20")
Fill Type	Weed Free Agricultural Straw
Staking Recommendation	Every 5-ft (stakes not included)



Netting Sample



Fill Sample

Item List:

Item Number (Black Net)	Item Number (White Net)	Diameter	Total Linear Feet per pallet	Unit Length	Units per pallet	Unit Weight	Pallet Weight
SW6-30-15	SW6-30-15-W	6-in	450-ft	15-ft	30		
SW6-16-30	SW6-16-30-W	6-in	480-ft	30-ft	16		~ 730 lbs
SW9-14-25	SW9-14-25-W	9-in	350-ft	25-ft	14	38 lb +/-10%	~ 590 lbs
SW9-24-10	SW9-24-10-W	9-in	240-ft	10-ft	24	16 lb +/-10%	~ 485 lbs
SW12-20-10	SW12-20-10-W	12-in	200-ft	10-ft	20	30 lb +/- 10%	~ 680 lbs
SW12-10-20	SW12-10-20-W	12-in	200-ft	20-ft	10	60 lb +/-10%	~ 680 lbs

Shipping Specs:

Pallets per TL	up to 28
Shipping Dimensions	up to 48L x 48W x 108H (height varies by product type)
Packaging	48 x 48 Pallet; Wattles are strapped together, and pallet is stretch-wrapped
Storage Life	Under Roof - 6 months / Outdoors - 3 months



DIAMOND WATTLE

Advanced Straw Wattle



DiamondWattle

A low cost, lightweight BMP option, now with Advanced Netting Options.

Our weed-free wattles provide perimeter protection along contours or at the base of slopes, inlets, and roadways to reduce soil erosion, runoff and retain sediment.

As an advanced alternative to traditional, common Straw Wattles, MKB offers our DiamondWattle™. It is everything you like about a wattle (economical, lightweight, easy to handle), with none of the problems! The net won't tear, significantly outlasts traditional wattle netting, and keeps rodents out of your warehouse.

MKB also offers a 100% biodegradable DiamondWattle, made with all natural wood fiber netting.

Benefits:

- Made with the same Advanced, premium netting as Compost Filter Sock
- Won't tear & outlasts traditional wattle netting
- Reduces dust & keeps rodents out
- 9" and 12" diameters
- 100% Biodegradable netting available



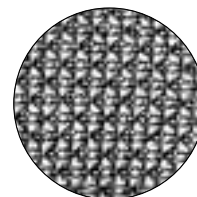
DiamondWattle
(Natural+)

DIAMOND WATTLE

Advanced Straw Wattle

DiamondWattle Product Specs:

Netting Material Type	Diamond Sock® Standard Pallet Netting Multi-Filament Polypropylene (MFPP)
Netting Degradation	Photodegradable
Netting Diameters	9", 12"
Netting Opening Size	1/8"
Netting Color	Black
Fabric Tensile Strength (ASTM D4595)¹	561 lbs
Fill Type	Weed Free Agricultural Straw
Functional Longevity²	1-2 years
Staking Recommendation	Every 5-ft (stakes not included)



Netting Sample



Fill Sample

¹Tensile Strength is based on 12" diameter using ATSM D4595. See Filtrexx TechLink #3342 for full tensile strength testing.

²Functional longevity ranges are estimates only. Site specific environmental conditions may result in significantly shorter or longer time periods.

Item List:

Item Number	Diameter	Total Linear Feet per pallet	Unit Length	Units per pallet	Unit Weight	Pallet Weight
SWD9-14-25	9-in	350-ft	25-ft	14	38 lb +/- 10%	~ 590 lbs
SWD9-24-10	9-in	240-ft	10-ft	24	16 lb +/- 10%	~ 485 lbs
SWD12-20-10	12-in	200-ft	10-ft	20	30 lb +/- 10%	~ 680 lbs
SWD12-10-20	12-in	200-ft	20-ft	10	60 lb +/- 10%	~ 680 lbs

Shipping Specs:

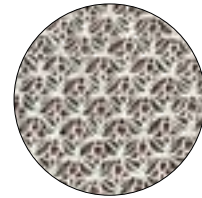
Pallets per TL	up to 28
Shipping Dimensions	up to 48L x 48W x 108H (height varies by product type)
Packaging	48 x 48 Pallet; Wattles are strapped together, and pallet is stretch-wrapped
Storage Life	Under Roof - 6 months / Outdoors - 3 months

DIAMOND WATTLE

Advanced Straw Wattle

DiamondWattle Natural+ Product Specs:

Netting Material Type	Natural + Netting All Natural Biodegradable Wood Fiber
Netting Degradation	Biodegradable
Netting Diameters	9", 12"
Netting Opening Size	3/8"
Netting Color	Off-white
Fill Type	Weed Free Agricultural Straw
Functional Longevity ¹	Up to 18 months
Staking Recommendation	Every 5-ft (stakes not included)



Netting Sample



Fill Sample

¹Functional longevity ranges are estimates only. Site specific environmental conditions may result in significantly shorter or longer time periods.

Item List:

Item Number	Diameter	Total Linear Feet per pallet	Unit Length	Units per pallet	Unit Weight	Pallet Weight
SWW9-14-25	9-in	350-ft	25-ft	14	38 lb +/- 10%	~ 590 lbs
SWW9-24-10	9-in	240-ft	10-ft	24	16 lb +/- 10%	~ 485 lbs
SWW12-20-10	12-in	200-ft	10-ft	20	30 lb +/- 10%	~ 680 lbs
SWW12-10-20	12-in	200-ft	20-ft	10	60 lb +/- 10%	~ 680 lbs

Shipping Specs:

Pallets per TL	up to 28
Shipping Dimensions	up to 48L x 48W x 108H (height varies by product type)
Packaging	48 x 48 Pallet; Wattles are strapped together, and pallet is stretch-wrapped
Storage Life	Storage not recommended for Biodegradable Wattles



EXCELSIOR LOG

Sediment Retention Fiber Roll



Flexible & multi-use Sediment Retention Fiber Roll (SRFR).

ErosionTech Excelsior Logs are an effective erosion control product used for sediment reduction, perimeter control, slope interruption and ditch check applications.

The Excelsior Log consists of a matrix of 100% Great Lakes Aspen weed-free fiber encapsulated with two netting options:

- Natural Biodegradable Wood Fiber netting
- Heavy Duty Polypropylene netting

Use in place of straw bales, rock checks or silt fence.

Applications:

- Sediment reduction
- Perimeter Control
- Ditches & Swales
- Slopes

Other Benefits:

- Light-weight & easy to install
- Flexible and conforms to contours
- No trenching required
- Naturally seed free

**100% Biodegradable
Excelsior Log available**

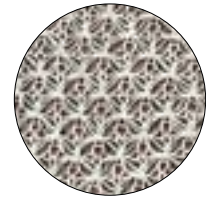


EXCELSIOR LOG

Sediment Retention Fiber Roll

Excelsior Log - Natural+ Net Product Specs:

Netting Material Type	Natural + Wattle Netting All Natural Biodegradable Wood Fiber
Netting Degradation	Biodegradable
Netting Diameters	9", 12"
Netting Opening Size	3/8"
Netting Color	Off-White
Fill Type	Natural Great Lakes Aspen weed-free Excelsior
Fiber Density	1.25 lb/lin ft (9" diameter) 3.2 lb/lin ft (12" diameter)
Fiber Dimensions	80% Greater Than 6"
Functional Longevity¹	Up to 18 months
Staking Recommendation	Every 5-ft (stakes not included)



Netting Sample



Fill Sample

¹Functional longevity ranges are estimates only. Site specific environmental conditions may result in significantly shorter or longer time periods.

Item List:

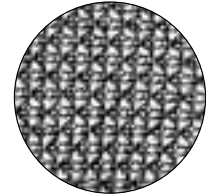
Item Number	Diameter	Total Linear Feet per pallet	Unit Length	Units per pallet	Unit Weight	Pallet Weight
ETXW9-14-25	9-in	350-ft	25-ft	14	40 lbs	~ 600 lbs
ETXW12-10-20	12-in	200-ft	20-ft	10	60 lbs	~ 640 lbs
ETXW12-20-10	12-in	200-ft	10-ft	20	30 lbs	~ 640 lbs

EXCELSIOR LOG

Sediment Retention Fiber Roll

Excelsior Log - Diamond Net Product Specs:

Netting Material Type	Diamond Sock® Standard Pallet Netting Multi-Filament Polypropylene (MFPP)
Netting Degradation	Photodegradable
Netting Diameters	9", 12"
Netting Opening Size	1/8"
Netting Color	Black
Fabric Tensile Strength (ASTM D4595)¹	561 lbs
Fill Type	Natural Great Lakes Aspen weed-free Excelsior
Fiber Density	1.25 lb/lin ft (9" diameter) 3.2 lb/lin ft (12" diameter)
Fiber Dimensions	80% Greater Than 6"
Functional Longevity²	1-2 years
Staking Recommendation	Every 5-ft (stakes not included)



Netting Sample



Fill Sample

¹Tensile Strength is based on 12" diameter using ATSM D4595. See Filtrexx TechLink #3342 for full tensile strength testing.

²Functional longevity ranges are estimates only. Site specific environmental conditions may result in significantly shorter or longer time periods.

Item List:

Item Number	Diameter	Total Linear Feet per pallet	Unit Length	Units per pallet	Unit Weight	Pallet Weight
ETX9-14-25	9-in	350-ft	25-ft	14	40 lbs	~ 600 lbs
ETX12-10-20	12-in	200-ft	20-ft	10	60 lbs	~ 640 lbs
ETX12-20-10	12-in	200-ft	10-ft	20	30 lbs	~ 640 lbs



COIR LOG

Sediment Retention Fiber Roll



Control erosion & establish vegetation, naturally.

ErosionTech Coir Logs are a type of sediment retention fiber roll (SRFR) designed to help control erosion and establish vegetation at high water marks. Coir Logs are flexible, modular, and easy to stake into place – no trenching required. Use Coir Logs where high water mark meets land, to repair and stabilize streambanks, riverbanks, and more.

Comprised of all-natural, 100% biodegradable coir twine netting and coir fiber fill, Coir Logs are a perfect solution for projects in environmentally sensitive areas. Additionally, Coir Logs are an ideal BMP for projects that require a permanent, vegetated BMP.

Assembled in the USA for quality control, and available in a variety of diameters & densities for any project.

Applications:

- Channels
- Waterbody Banks

Benefits:

- All natural, 100% biodegradable materials
- Promotes vegetation growth
- Flexible and modular
- No trenching required
- Use in environmentally-sensitive areas
- Easily secure with stakes
- No removal needed



COIR LOG

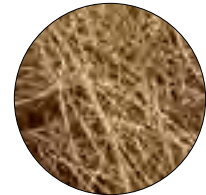
Sediment Retention Fiber Roll

Coir Log Product Specs:

Netting Material Type	90 lbs (400 N) Bristle Coir Twine Net
Netting Degradation	Biodegradable
Netting Diameters	9", 12", 16", 20"
Netting Opening Size	2" X 2"
Netting Color	Natural brown
Fill Type	Coir fiber
Fiber Density	9" diameter: 5 lb/ft 12" diameter: 7 lb/ ft or 9lb/ft 16" diameter: 9 lb/ft 20" diameter: 9 lb/ft
Functional Longevity¹	up to 5 years
Staking Recommendation	dependent on application (stakes not included)



Netting Sample



Fill Sample

¹Functional longevity ranges are estimates only. Site specific environmental conditions may result in significantly shorter or longer time periods.

Item List:

Item Number	Diameter	Density	Total Linear Feet per pallet	Unit Length	Units per pallet	Unit Weight
CL9-10-5	9-in	5 lb/ft	250-ft	10-ft	25	30 lbs
CL12-10-7	12-in	7 lb/ft	160-ft	10-ft	16	50 lbs
CL12-10-9	12-in	9 lb/ft	160-ft	10-ft	16	70 lbs
CL16-10-9	16-in	9 lb/ft	90-ft	10-ft	9	124 lbs
CL20-10-9	20-in	9 lb/ft	40-ft	10-ft	4	194 lbs

STRAWMAX®

Bagged Seeding Straw



Restoration Seeding Straw that works.

Comprised of chopped agricultural straw and natural guar gum tackifier – simple, natural ingredients, yet effective. Use to prevent soil erosion and improve seed germination.

- Prechopped for easy hand spreading
- Great for touchups or along blanketing
- Includes tackifier to prevent blow away
- Lightweight, weather tight wrapped bales on a pallet
- Covers up to 500 sq. ft. per bale
- Safe for use around home, children and pets

How to Use:

1. Prepare your surface
2. Apply seed and fertilizer of your choice
3. Apply StrawMax Seeding Straw evenly
4. Water as needed

Product Specs:

Pounds per bag	~ 22 lbs.
Ingredients	Short chopped agricultural straw (straw from wheat, oat, and barley production); guar gum added as an environmentally friendly tackifier
Tackifier per bag	3 oz
Coverage per bag	Up to 500 sq. ft.

Item List:

Item Number	Bag Dimensions	Bag Weight	Bags per Pallet	Pallet Weight
Bagged Straw – Filled – StrawMax	24"x16"x9.5"	22 lbs. (± 10%)	40	~ 900 lbs

Shipping Specs:

Pallets per TL	26
Shipping Dimensions / Packaging	40L x 48W x 66H / 40 x 48 Pallet
Storage Life	Under Roof - 6 months - must be stored under roof

STRAWMAX[®]

Lawn Repair Mix



Taking the guesswork out of lawn repair, one bag at a time.

StrawMax Lawn Repair Mix contains a combination of seed, straw, tackifier, and fertilizer – everything you need, in one bag, to help repair bare spots in your lawn.

- Apply in sun or shade
- Combination of seed, straw, tackifier and fertilizer
- Helps repair bare spots
- Helps keep seed in place
- Lightweight, easy to handle bales
- Weather tight bale wrapping – no mess
- Covers up to 500 sq. ft. per bale

How to Use:

1. Prepare your surface
2. Apply StrawMax Lawn Repair Mix evenly
3. Water as needed

Product Specs:

Pounds per bag	~ 23 lbs.
Ingredients	chopped agricultural straw and guar gum tackifier (18 lbs), seed (3.5 lbs), organic fertilizer (1.5 lbs)
Coverage per bag	Up to 500 sq. ft.

Item List:

Item Number	Bag Dimensions	Bag Weight	Bags per Pallet	Pallet Weight
Bagged Straw - Filled - StrawMax LR	24"x16"x9.5"	~ 23 lbs.	40	~ 950 lbs

Shipping Specs:

Pallets per TL	26
Shipping Dimensions / Packaging	40L x 48W x 66H / 40 x 48 Pallet
Storage Life	Under Roof - 6 months - must be stored under roof

STRAWMAX®

Home & Garden Straw



Versatile, premium 100% straw for your home & garden.

StrawMax Home & Garden Straw contains only 100% premium, pure chopped agricultural straw. Perfect for garden weed control, protecting plants, or bedding for your pets.

- 100% pure chopped agricultural straw
- Biodegradable
- Use for garden weed control - protects plants
- Helps retain moisture
- Soft & snug for your pet
- Weather tight bale wrapping – no mess
- Safe for use around home, children and pets

How to Use:

1. Prepare your surface
2. Apply StrawMax Home & Garden evenly
3. Water as needed

Product Specs:

Pounds per bag	~ 22 lbs.
Ingredients	Short chopped agricultural straw (straw from wheat, oat, and barley production)
Coverage per bag	Up to 500 sq. ft.

Item List:

Item Number	Bag Dimensions	Bag Weight	Bags per Pallet	Pallet Weight
Bagged Straw – Filled – StrawMax	24"x16"x9.5"	22 lbs. (± 10%)	40	900 lbs

Shipping Specs:

Pallets per TL	26
Shipping Dimensions / Packaging	40L x 48W x 66H / 40 x 48 Pallet
Storage Life	Under Roof - 6 months - must be stored under roof

STRAW BLANKETS



Get your next project rolling.

ErosionTech Rolled Straw Blankets are the perfect size for easy handling on any home project. Use to prevent soil erosion and improve seed germination.

- Use for hills, slopes, channels and ditches
- Helps keep seed from washing away
- Helps retain moisture
- Rapid degradable with typical longevity of 45 days
- Safe for use around home, children and pets

How to Use:

1. Prepare your surface
2. Apply seed and fertilizer of your choice
3. Unroll blanket and apply to surface (cut to desired size prior to application if needed)
4. Insert stakes, staples or pins to secure blanket to surface
5. Water as needed

Item List:

Item Number	Roll Dimensions	Roll Coverage	Roll Weight	Rolls/Pallet
ETRS-1-22-RD	4-ft x 50-ft	200 sq. ft	9 lbs	49
ETRS-1-22-RD-SS6 *	4-ft x 50-ft	200 sq. ft	9 lbs	49
ETRS-1-44-RD	4-ft x 100-ft	400 sq. ft	18 lbs	25

*Includes staples

Shipping Specs:

Pallets per TL	26
Shipping Dimensions / Packaging	40L x 48W x 66H / 40 x 48 Pallet
Storage Life	Under Roof - 6 months - must be stored under roof



Retail Displays Available

ENVIROSOXX[®]

Pollutant Filter Sock



The most versatile and cost effective filter for stormwater pollutant removal.

A passive filtration system ready to install on any site, EnviroSoxx targets the most common pollutants in stormwater runoff. EnviroSoxx contains compost FilterMedia™ plus natural sorbents used to increase pollutant removal capacity, and to reduce pollutant transport in runoff and absorption by plants. Recommended quarterly replacement or per site conditions.

EnviroSoxx is available in two filter blends to target common pollutants.

- **Industrial Blend Filter:** Targets a range of heavy metals, hydrocarbons, nutrients, sediment, and pH.
- **Advanced Blend Filter:** Targets bacteria, nutrients, hydrocarbons, select heavy metals, and sediment.

Applications:

- Inlets & Outfalls
- Ditches & Swales; Biofiltration
- Perimeters & Wraps

Other Benefits:

- Reduces pollutant loads
- Fits existing infrastructure
- Easy to maintain & replace
- Third-party researched
- EXTREME durable netting stands up to hard surfaces and harsh site conditions
- Optional handles available as add-on

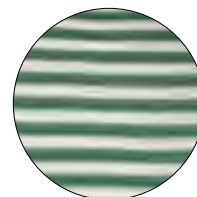


ENVIROSOXX®

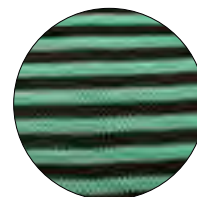
Pollutant Filter Sock

EnviroSoxx Product Specs:

Netting Material Type	EXTREME Pallet Netting Multi-Filament Polypropylene (MFPP)
Netting Degradation	Photodegradable
Netting Diameters	8", 12"
Netting Opening Size	1/16"
Netting Color	Green/White Stripe (Industrial Blend) Green/Black Stripe (Advanced Blend)
Fabric Tensile Strength (ASTM D4595) ¹	929 lbs
Fill Type	Certified & Locally Sourced Composted FilterMedia™ + Natural Additives
Functional Longevity ²	Quarterly replacement recommended
Staking Recommendation	Every 10-ft (stakes not included)



Netting Sample



Netting Sample



Fill Sample

¹Tensile Strength is based on 12" diameter using ATSM D4595. See Filtrex TechLink #3342 for full tensile strength testing.

²Functional longevity ranges are estimates only. Site specific environmental conditions may result in significantly shorter or longer time periods.

Item List:

Item Number (Industrial)	Item Number (Advanced)	Diameter	Total Linear Feet per pallet	Unit Length	Units per pallet	Pallet Weight
T08-80S8W	T08-80S8A	8-in	80-ft	10-ft	8	~ 1200 lbs
T08-160S16W	T08-160S16A	8-in	160-ft	10-ft	16	~ 1950 lbs
T08-160S2W	T08-160S2A	8-in	160-ft	80-ft	2	~ 1950 lbs
T12-50S5W	T12-50S5A	12-in	50-ft	10-ft	5	~ 1200 lbs
T12-100S10W	T12-100S10A	12-in	100-ft	10-ft	10	~ 1950 lbs
T12-100W	T12-100A	12-in	100-ft	100-ft	1	~ 1950 lbs

Note: Optional handles available as add-on

Shipping Specs:

Pallets per TL	26
Shipping Dimensions	40L x 48W x 66H
Packaging	40 x 48 Pallet with Plastic Stretch-Wrap
Storage Life	Under Roof, with Ventilation - 6 months / Outdoors, Dry - 3 months

STORMEXX[®]

Catch Basin Filter



Designed to fit most existing storm water drain systems to capture sediment and pollutants.

StormExx uses filtering media in a replaceable cartridge for under the grate stormwater treatment. Perfect for use in urban watersheds, sensitive receiving waters, and TMDL (§303d) listed water bodies.

StormExx is available in two filter blends to target common pollutants.

- **Industrial Blend Filter:** Targets a range of heavy metals, hydrocarbons, nutrients, and sediment.
- **Advanced Blend Filter:** Targets bacteria, nutrients, hydrocarbons, select heavy metals, and sediment.

Pair StormExx with EnviroSoxx Pollutant Filters for added pollutant protection above and below the grate.

Applications:

- Roadways & Parking Lots
- Oil & Fuel Spills
- Industrial Sites & Factories
- Airports & Military Bases

Other Benefits:

- Easy to install, maintain and replace
- Fits existing storm drain systems - round or rectangular
- Optional sample port is available
- Option for double units for qualifying inlets
- Nominal flow rate of 15-40 gpm; overflow bypass of 500+ gpm*

*Flow rates based on controlled in-house testing; rates may vary and are dependent on site specific environmental conditions. Consult maintenance guide for performance criteria.

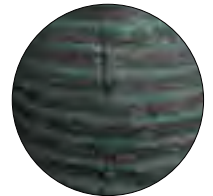


STORMEXX[®]

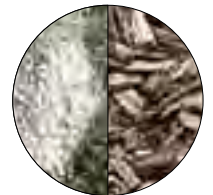
Catch Basin Filter

StormExx Product Specs:

Filter Netting Material Type	High-Density Polypropylene (HDPE)
Filter Netting Degradation	UV Stable
Filter Netting Diameter	10"
Filter Length	10", 20"
Filter Netting Opening Size	75% screen
Filter Netting Color	Green/Black Stripe
Filter Fill Type	Certified & Locally Sourced Composted FilterMedia™ + Natural Additives
Frame Materials	HDPE housing; Stainless Steel or HDPE support system
Flow Rate¹	Nominal flow rate of 15-40 gpm; overflow bypass of 500+ gpm
Functional Longevity²	Quarterly replacement recommended or per site plans.
Additional Features	Sample Port (optional add-on) Trash Capture Screen (optional add-on)
Filter Storage Life	Under Roof, with Ventilation - 6 months / Outdoors, Dry - 3 months



Netting Sample



Fill Sample

¹Flow rates based on controlled in-house testing; rates may vary and are dependent on site specific environmental conditions. Consult maintenance guide for performance criteria.

²Functional longevity ranges are estimates only. Site specific environmental conditions may result in significantly shorter or longer time periods.

Item List:

Description - Frame Options	
Rectangular Frame - Stainless Steel	
Rectangular Frame - Stainless Steel - Double	
Rectangular Frame - HDPE	
Square Frame - Stainless Steel	
Square Frame - HDPE	
Round Frame - Stainless Steel	
Round Frame - HDPE	
Item Number	Description - Replacement Filters
SX100	Replacement Filter, 20" Industrial Blend
SX102	Replacement Filter, 10" Industrial Blend
SX100A	Replacement Filter, 20" Advanced Blend
SX102A	Replacement Filter, 10" Advanced Blend

Notes:

- Inspection/Sampling Port and Trash Capture Screen are available for an additional charge.
- Industrial Blend Filters made to stock; Advanced Blend Filters made to order.

Example Configuration:



GROSOXX®

Vegetated Filter Sock



Quickly establish vegetation for Low Impact Development & Green Infrastructure applications.

GroSoxx is used to quickly establish vegetation for LID and green infrastructure applications such as rain gardens, bioswales, channels, filtration systems, gabions and more.

GroSoxx uses DURABLE mesh netting and is pre-filled with certified, composted GrowingMedia™ to provide a stable and fertile environment for plant growth.

Easily plant GroSoxx after construction is complete, or call for a custom quote for pre-seeded GroSoxx.

Applications:

- Rain Gardens
- Bioswales
- Channels
- Filtration Systems
- Gabions

Other Benefits:

- Stable & fertile growing environment
- Plant after construction, or available pre-seeded
- Easy & quick to install

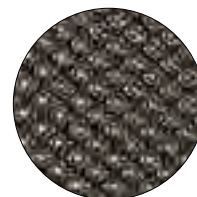


GroSoxx Product Specs:

Netting Material Type	Durable Netting Multi-Filament Polypropylene (MFPP)
Netting Degradation	Photodegradable
Netting Diameters	8", 12"
Netting Opening Size	1/8"
Netting Color	Black
Fabric Tensile Strength (ASTM D4595)¹	385 lbs
Fill Type	Certified & Locally Sourced Composted Growing Media
Functional Longevity²	Up to 5 years

¹Tensile Strength is based on 12" diameter using ATSM D4595. See Filtrex TechLink #3342 for full tensile strength testing.

²Functional longevity ranges are estimates only. Site specific environmental conditions may result in significantly shorter or longer time periods. Vegetation prevents UV exposure and may extend functional longevity.



Netting Sample



Fill Sample

Item List:

Item Number	Diameter	Unit Length	Weight/unit (approx.)*	Units per pallet
SGR08-2	8-in	2-ft	43 lbs	up to 50
SGR08-3	8-in	3-ft	65 lbs	up to 30
SGR12-2	12-in	2-ft	72 lbs	up to 30
SGR12-3	12-in	3-ft	105 lbs	up to 20

Shipping Specs:

Pallets per TL	
Shipping Dimensions	40L x 48W x 66H
Packaging	40 x 48 Pallet with Clear, Black, or Blue Plastic Stretch-Wrap or Super Sack
Storage Life	Under Roof - 6 months / Outdoors - 3 months (un-seeded) Storage not recommended for pre-seeded GroSoxx

Notes:

For pre-seeded GroSoxx, call for custom quote and seed mix options.

*Pre-filled GroSoxx weights are approximate and vary based on moisture content. Pallets not to exceed 2,200 lbs.

GREENLOXX®

Vegetated Wall, Slope & Shore System



Designed for Strength. Rooted in Sustainability.

GreenLoxx® vegetated systems allow for the restoration of eroded or damaged slopes, riparian waterways, shoreline banks, and more. Create attractive, naturally vegetated landscapes without the use of hard concrete materials on your restoration projects.

GreenLoxx VSF (Vegetated Slope Facing):

Typically used to protect the face of the slope or bank from erosion. Requires minimal base preparation/excavation, and no backfill. Geogrid is wrapped over the GroSoxx® and secured with soil anchors.

GreenLoxx MSE (Mechanically Stabilized Earth):

Typically used to build a more vertical, structural wall. GroSoxx are stacked in courses wrapped in geogrid and tied back into the compacted fill behind the face of the wall.

Applications:

- Streambanks
- Steep Slopes
- Shorelines
- Retaining Walls
- Roadside Slopes

Contact MKB for availability & system packages. May require engineering and permits depending upon size and scope of project.



GREENLOXX®

Vegetated Wall, Slope & Shore System

Configurations:

System Name	MSE	Slope Degree	Anchors	Geogrid	GroSoxx® Size	Purpose
GreenLoxx VSF Vegetated Slope Facing	No	up to 60°	Yes	Yes	8"x3'	Protect slope surface from erosion
GreenLoxx MSE Mechanically Stabilized Earth	Yes	70° - 90°	No	Yes	12"x2'	Gain back land
GreenLoxx MSE - RSS Reinforced Soil Slope	Yes	50° - 70°	No	Yes	12"x2'	Gain back land

Components:

GroSoxx: Durable mesh is filled with Certified GrowingMedia™ as the basis to quickly establish vegetation.

Geogrid: Used to wrap layers of GroSoxx. Biaxial pattern provides strength and features a 2"x2" opening to eliminate cutting the grid for planting.

Soil Anchors: Used in GreenLoxx VSF to secure layers of geogrid and GroSoxx.

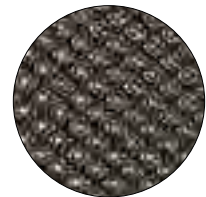
Vegetation: Options include pre-seeded GroSoxx, live staking, broadcast seeding, or plugs.

Product Specs (GroSoxx):

Netting Material Type	DURABLE Netting Multi-Filament Polypropylene (MFPP)
Netting Degradation	Photodegradable
Netting Diameters	8", 12"
Netting Opening Size	1/8"
Netting Color	Black
Fabric Tensile Strength (ASTM D4595)¹	385 lbs
Fill Type	Certified & Locally Sourced Composted GrowingMedia
Functional Longevity²	Up to 5 years

¹Tensile Strength is based on 12" diameter using ATSM D4595. See Filtrex TechLink #3342 for full tensile strength testing.

²Functional longevity ranges are estimates only. Site specific environmental conditions may result in significantly shorter or longer time periods. Vegetation prevents UV exposure and may extend functional longevity.



Netting Sample



Fill Sample

Contact MKB for availability & system packages. May require engineering and permits depending upon size and scope of project.

MKB

Stormwater Innovation

888-578-0777

mkbcompany.com | info@mkbcompany.com

El Mirage, AZ 85335	Marshfield, MO 65706	Abbeville, SC 29620
Escondido, CA 92027	Columbus, OH 43807	Hixson, TN 37343
Vernalis, CA 95385	Sugarcreek, OH 44681	Austin, TX 78719
Greeley, CO 80631	Belleville, PA 17004	Ferrum, VA 24088
Foley, MN 56329	Philadelphia, PA 19154	Portage, WI 53901
Milaca, MN 56353	Pittsburgh, PA 16063	

Product availability & selection may vary due to local manufacturing and/or regulatory requirements.

©2024 MKB Company. All Rights Reserved. Updated/Printed August 2024. Version 2.1.

All statements, product characteristics, and performance data contained herein are believed to be reliable based on observation and testing, but no representations, guarantees, or warranties of any kind are made as to accuracy, suitability for particular applications, or the results to be obtained. Nothing contained herein is to be considered to be permission or a recommendation to use any proprietary process or technology without permission of the owner. No warranty of any kind, expressed or implied, is made or intended.

EnviroSoxx®, Filtrexx®, Filtrexx SiltSoxx®, GreenLoxx®, GroSoxx®, Powered by Filtrexx®, Siltron®, Storm Catcher®, StormExx®, Straw Max®, Switch Sock®, the branch & leaf logo®, and the color GREEN® are Registered Trademarks of MKB Company. BlackHawk™, DiamondWattle™, DiversionSoxx™, Erosion Tech™, FilterMedia™, GrowingMedia™, RockSoxx™, and SwitchSoxx™ are Trademarks of MKB Company.

US Patents 7,226,240; 7,452,165; 8,439,607; 8,652,323; 8,740,503; 10,167,620; 10,704,247; 11,098,472; 11,466,413 and Patents Pending 63/221,435; 62/964,021; 18/114,601; 62/349,890; 17/459,534; 63/070,891 may apply.

MKB AUTHORIZED DISTRIBUTOR:

