

3693TRM
Hand Shower Trim
Specification Submittal

Location:

Model Numbers

- 3693TRM**
Hand Shower Trim
- Valve Options:**
-261 Series Temptrol Shower Valve with TRM modifier
-161 Series Temptrol Shower Valve requires TC modifier

Feature Highlights

- Duro Hand Shower Trim.
- Requires Temptrol® Pressure Balancing Shower Valve.
- Metal lever handle.
- 30" slide bar for hand shower wand.
- Dual checks for backflow protection.
- 60" flexible metal hose.
- Single mode hand shower wand with NPSO.
- Standard flow rate, 2.0 gpm (7.6 L/min).
- Components shall be metal and nonmetal construction, plated in standard polished chrome finish.

Compliance

- ASME A112.18.1/CSA B125.1
- WaterSense 1.5 gpm (5.7 L/min) 1.75 gpm(6.6 L/min) 2.0 gpm (7.6 L/min)
- Lever handle meets ADA requirements for operation

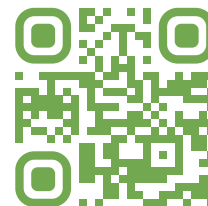


Options/Modifications

- 15** **CG** 1.5 gpm (5.7 L/min) flow restrictor
- 175** 1.75 gpm (6.6 L/min) flow restrictor
- L2** Less hand shower wand
- L7** Less handle
- TC** Test Cap Trim (includes TA-10&T-12A) *used with 161 series Temptrol Shower Valve*
- BBZ** Brushed Bronze finish
- MB** Matte Black finish
- STN** Satin Nickel finish

Warranty

Limited Lifetime - to the original end purchaser in consumer/residential installations.
10 Years - for commercial/industrial installations. Refer to www.symmons.com/warranty for complete warranty information.



SKU Builder

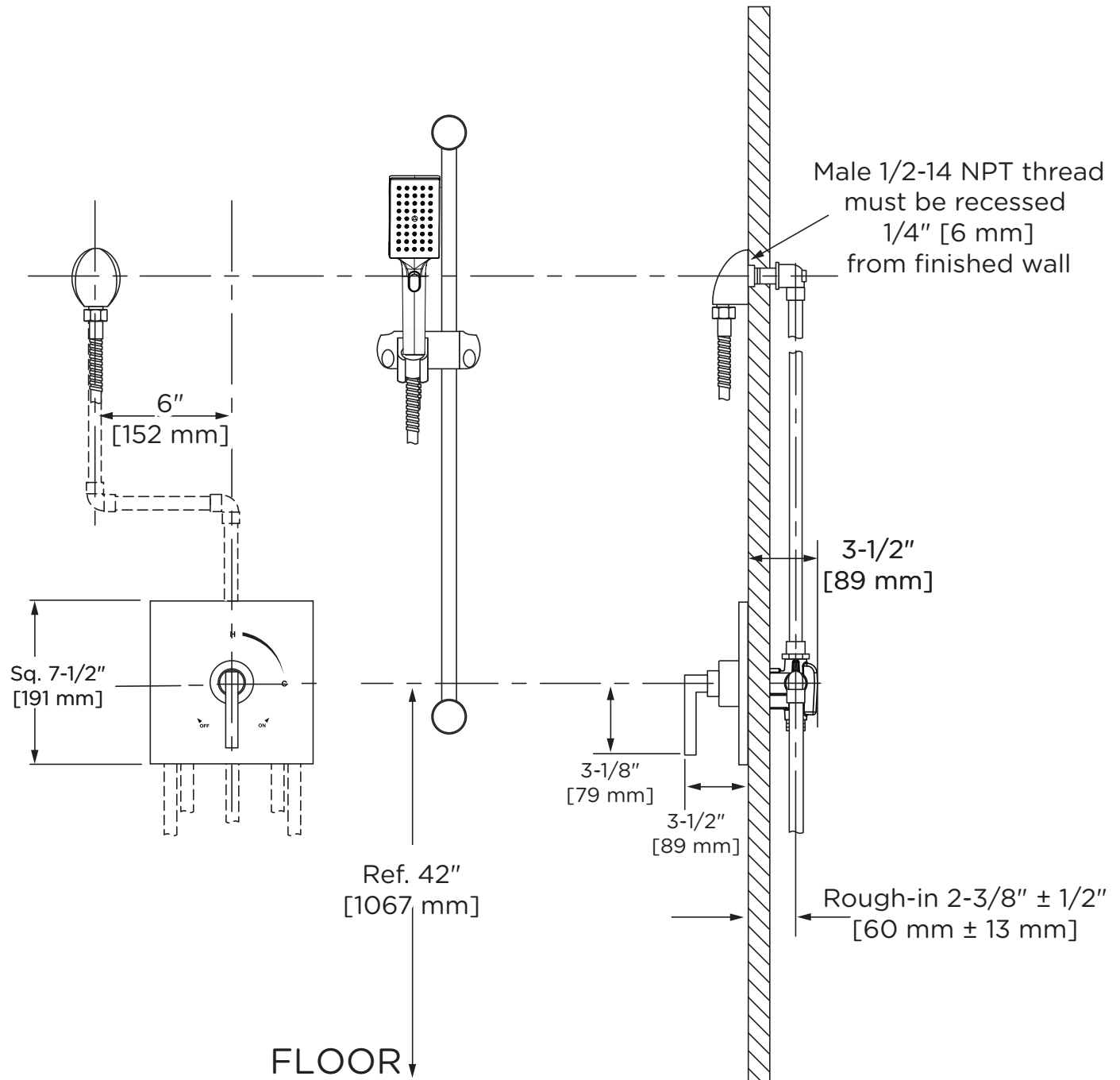
Series	Finish	Modifier	Flow Rate	TRM (required)	TC	Final SKU
3693	STN		15	TRM		3693STN15TRM
3693	MB	L2		TRM	TC	3693MBL2TRMTC

Note: No more than two modifiers (L1-L7) and modifier order will follow numerical order.

Architectural/Engineering Specification

Symmons Duro Hand Shower Trim _____ Includes Duro Hand Shower Trim powered by Temptrol® Pressure Balancing Shower Valve. Features metal lever handle, 30" slide bar for hand shower wand, dual checks for backflow protection 60" flexible metal hose, single mode hand shower wand with NPSO, and standard 2.0 gpm (7.6 L/min) flow rate. Components shall be metal and nonmetallic construction, plated in standard polished chrome finish. 10 Year Commercial Warranty. Lever handle meets ADA requirements for operation. ASME A112.18.1/CSA B125.1, WaterSense 1.5 gpm (5.7 L/min), 1.75 gpm (6.6 L/min), and 2.0 gpm (7.6 L/min) compliant. Available options: "15 - 1.5 gpm (5.7 L/min) flow restrictor", "175 - 1.75 gpm (6.6 L/min) flow restrictor", "L2 - Less hand shower wand", "L7 - Less handle", "TC - Test Cap Trim", "BBZ - Brushed Bronze finish", "MB - Matte Black finish", and "STN - Satin Nickel finish".

Dimensions



Notes:

- 1) Valve body and piping not included and shown as reference only.
- 2) Plaster shield (p/n T-176) for dry wall, plaster or other type walls 1/2" or greater.
- 3) All dimensions measured from nominal rough-in.
- 4) Dimensions subject to change without notice.