

Stainless Steel Threaded Fittings

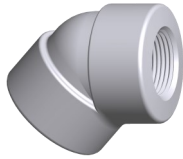
ASTM A182, F304/F304L or F316/316L, ASME B16.11, ASME B1.20.1

CAMCO



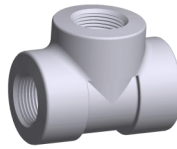
90° Threaded Elbows

1/8" to 2" Class 2000
1/8" to 2" Class 3000
1/8" to 2" Class 6000



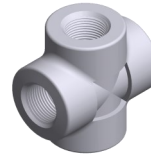
45° Threaded Elbows

1/4" to 2" Class 2000
1/8" to 2" Class 3000
1/8" to 2" Class 6000



Threaded TEEs

1/8" to 2" Class 2000
1/8" to 2" Class 3000
1/8" to 2" Class 6000



Threaded Crosses

1/8" to 2" Class 2000
1/8" to 2" Class 3000
1/8" to 1-1/4" Class 6000



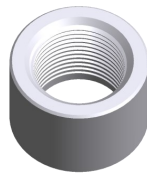
Threaded Street Elbows

1/8" to 1" Class 3000



Threaded Couplings

1/8" to 4" Class 3000
1/8" to 4" Class 6000



Threaded Half Couplings

1/8" to 4" Class 3000
1/8" to 4" Class 6000



Threaded Pipe Caps

1/8" to 4" Class 3000
1/8" to 4" Class 6000



High Pressure Hex Bushings

1/4" to 4"



High Pressure Square Head Plugs

1/8" to 4"



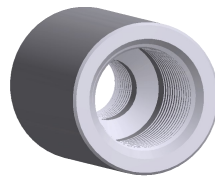
High Pressure Square Head Plugs

1/8" to 4"



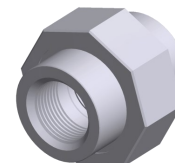
High Pressure Hex Head Plugs

1/8" to 4"



Threaded Reducing Couplings

1/4" to 4" Class 3000
1/4" to 4" Class 6000



Threaded Pipe Unions

1/8" to 3" Class 3000