

Schedule 40 Half Bath Waste Kit with Quick Test

Specifications

- Fits 1-1/2" pipe
- Snap-on faceplate
- Includes test plug and test membrane
- 5-year limited warranty

Dimensions and Product Offering

Part Code	Material	Finish	Stopper
B0HPZLCP	PVC	Chrome Plated	Lift and Turn
B0HPZLFCP*	PVC	Chrome Plated	Lift and Turn
B0HPBPCP	PVC	Chrome Plated	Push/Pull
B0HPZTCP	PVC	Chrome Plated	Toe Touch
B0HPZLBN	PVC	Brushed Nickel	Lift and Turn
B0HPBPBN	PVC	Brushed Nickel	Push/Pull
B0HPZTBN	PVC	Brushed Nickel	Toe Touch
B0HPZLMB	PVC	Matte Black	Lift and Turn
B0HPBPMB	PVC	Matte Black	Push/Pull
B0HPZTMB	PVC	Matte Black	Toe Touch
B0HPZLWH	PVC	White	Lift and Turn
B0HPZLFWH*	PVC	White	Lift and Turn
B0HPBPWH	PVC	White	Push/Pull
B0HPZLRB	PVC	Oil Rubbed Bronze	Lift and Turn
B0HPBPRB	PVC	Oil Rubbed Bronze	Push/Pull
B0HPZTRB	PVC	Oil Rubbed Bronze	Toe Touch
B0HAZLCP	ABS	Chrome Plated	Lift and Turn
B0HABPCP	ABS	Chrome Plated	Push/Pull
B0HAZLBN	ABS	Brushed Nickel	Lift and Turn
B0HABPBN	ABS	Brushed Nickel	Push/Pull
B0HAZTBN	ABS	Brushed Nickel	Toe Touch
B0HABPMB	ABS	Matte Black	Push/Pull
B0HABPWH	ABS	White	Push/Pull
B0HABPRB	ABS	Oil Rubbed Bronze	Push/Pull

* Fine Thread

Material

- PVC or ABS

Certifications/Listings/Approvals

- ASME A112.18.2/CSA B125.2



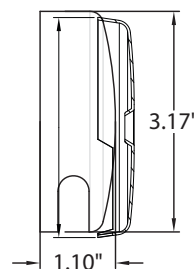
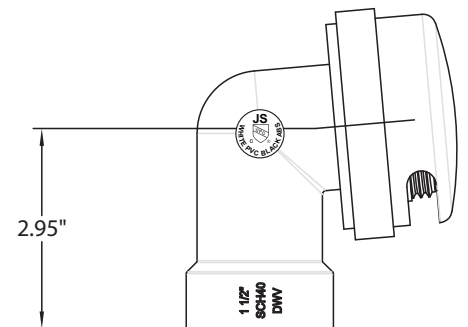
Job Name _____

Location _____

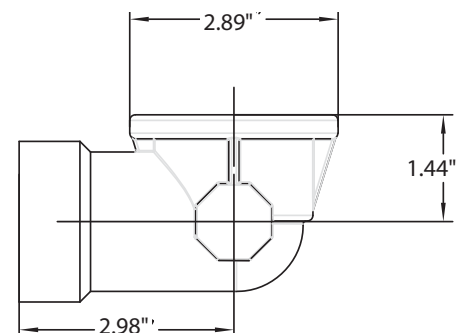
Engineer _____

Contractor _____

Tag _____ PO# _____

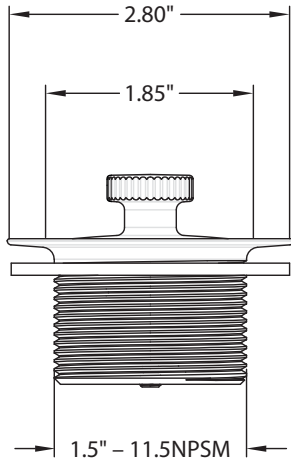
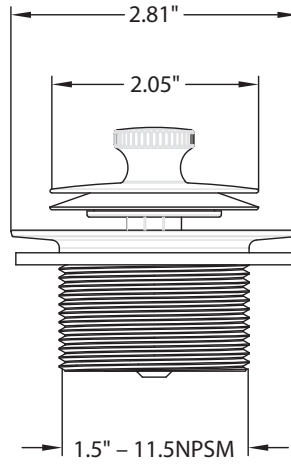
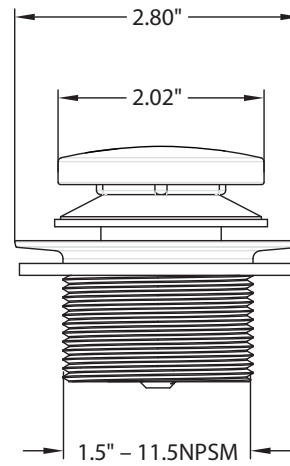


Faceplate



See page 2 for drain drawing and dimensions.

Schedule 40 Half Bath Waste Kit with Quick Test

**Lift and Turn****Push/Pull****Toe Touch**