

SNAP ON BATHTUB FACEPLATE WITH CONVERSION BAR

NOTE: Compatible with Jones Stephens' quick test style bath waste kits.

Parts List

1. Overflow Elbow
2. Overflow Gasket
- 3. Retainer Nut**
- 4. Faceplate**
5. 1-Hole Overflow Elbow
- 6. Conversion Bar**
7. Faceplate Screw
8. 2-Hole Overflow Elbow

NOTE: Components in bold text are included with this product.

Installation Instructions

Scenario 1: Replace Faceplate with New Faceplate

1. Remove the old faceplate and retainer nut.
2. Install the new retainer nut (No. 3).
3. Snap the new faceplate (No. 4) onto the retainer nut (No. 3), rotating the faceplate (No. 4) so that the faceplate opening faces downward. *(This installation does not use the conversion bar).*

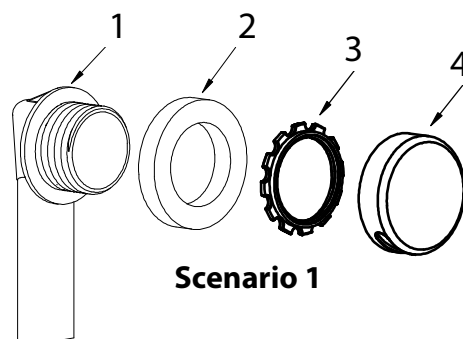
Note: Faceplate (4) may exhibit a loose fit on the retainer nut (3), before being installed on the tub. The thread pattern on the overflow elbow (1) is tapered and will expand the outside diameter of the nut to provide a more secure fit during the installation process. You can tighten the retainer nut an additional 1/8 to 1/4 turn if the faceplate is still loose after installation.

Scenario 2: Replace 1-Hole Faceplate with New Faceplate

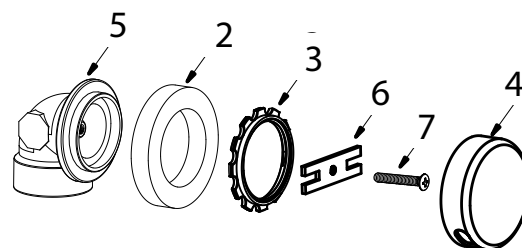
1. Remove the old 1-Hole faceplate and screw (No. 7).
2. Place the retainer nut (No. 3) on the tub drain hole and fix it in place with the conversion bar (No. 6) and the screw (No. 7).
3. Snap on the new faceplate (No. 4), with the slot facing down.

Scenario 3: Replace 2-Hole Faceplate with New Faceplate

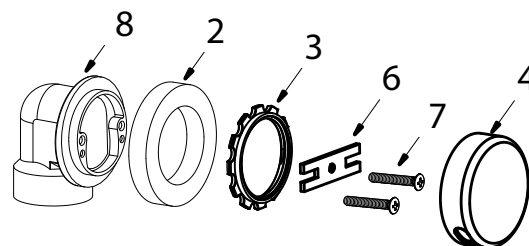
1. Remove the old 2-Hole faceplate and screws (No. 7).
2. Place the retainer nut (No. 3) on the tub drain hole and fix it in place with the conversion bar (No. 6) and the screws (No. 7).
3. Snap on the new faceplate (No. 4), with the slot facing down.



Scenario 1



Scenario 2



Scenario 3