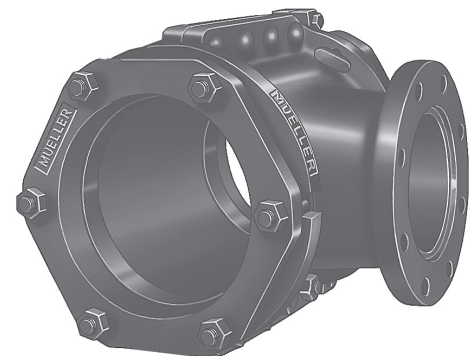


Rev. 7-17 Shaded area indicates changes

- Catalog number
H-615 Mechanical Joint Tapping Sleeve - with Duck Tipped end gaskets
- Sizes-- 4"-24" main and outlet (see chart below for available size combinations)
- Outlet flange drilling complies with ASME/ANSI B16.1 class 125, B16.42 class 150 and with MSS SP-60
- Certified to ANSI/NSF 61
- Ductile Iron body with 3/4" NPT test plug
- 4"-24" sizes--250 psig (1725 kPa/17 barg) maximum working pressure



H-615 shown

Tapping Sleeve pipe information

Nominal size of main	O.D. Range of sleeve		Class and type of pipe	End Gasket part number
	Inch	mm		
4"	4.74"-4.86"	120.5-123.3	Cast iron classes 100, 150, 200 & A - all classes of ductile iron - cast iron O.D. PVC plastic pipe classes 150 & 200	195824
	4.87"-5.32"	123.8-135.0	Cast iron classes B, C, & D - A-C classes 100 & 150	195653
6"	6.84"-6.96"	173.8-176.7	Cast iron classes 100, 150, 200 & A - all classes of ductile iron - cast iron O.D. PVC plastic pipe classes 150 & 200	195825
	6.97"-7.40"	177.1-187.9	Cast iron classes B, C, & D - A-C classes 100 & 150	195654
8"	8.99"-9.11"	228.4-231.3	Cast iron classes 100, 150, 200, & A & B - all classes of ductile iron - cast iron O.D. PVC plastic pipe classes 150 & 200	195826
	9.12"-9.62"	231.7-244.2	Cast iron classes B, C, & D - A-C classes 100 & 150	195655
10"	11.04"-11.16"	280.5-283.4	Cast iron classes 150, 200, 250, & A & B - all classes of ductile iron - cast iron O.D. PVC plastic pipe classes 150 & 200	194680
12"	13.14"-13.26"	333.9-336.7	Cast iron classes 150, 200, 250, & A & B - all classes of ductile iron - cast iron O.D. PVC plastic pipe classes 150 & 200	194638
14"	15.22"-15.35"	386.7-389.8	Cast iron classes 50, 100, 150, 200, 250, A & B - all classes of ductile iron	195127
16"	17.32"-17.45"	440.0-443.1	Cast iron classes 50, 100, 150, 200, 250, A & B - all classes of ductile iron	195128
18"	19.42"-19.55"	493.4-496.5	Cast iron classes 50, 100, 150, 200, 250, A & B - all classes of ductile iron	195266
20"	21.52"-21.65"	546.7-549.8	Cast iron classes 50, 100, 150, 200, 250, A & B - all classes of ductile iron	195129
24"	25.72"-25.85"	653.4-656.5	Cast iron classes 50, 100, 150, 200, 250, A & B - all classes of ductile iron	195130

Sizes available

Nominal size of main	Outlet size									
	4"	6"	8"	10"	12"	14"	16"	18"	20"	24"
4"	X	-	-	-	-	-	-	-	-	-
6"	X	X	-	-	-	-	-	-	-	-
8"	X	X	X	-	-	-	-	-	-	-
10"	X	X	X	X	-	-	-	-	-	-
12"	X	X	X	X	X	-	-	-	-	-
14"	-	X	X	X	X	X	-	-	-	-
16"	X	X	X	X	X	X	X	-	-	-
18"	X	X	X	X	X	-	X	X	-	-
20"	X	X	X	X	X	X	X	X	X	-
24"	X	X	X	X	X	X	X	X	X	X