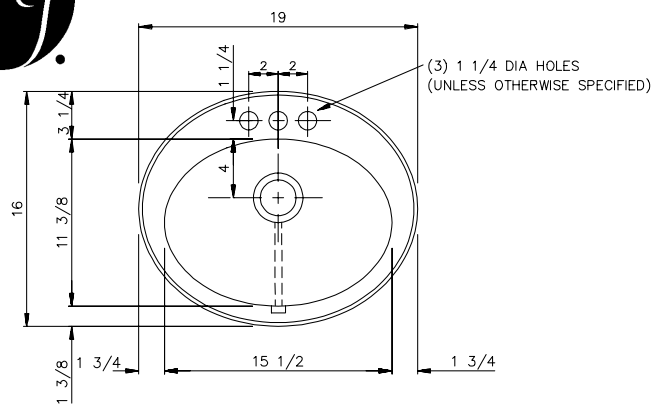
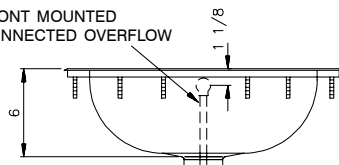




# LAVATORY GROUP



FRONT MOUNTED  
CONNECTED OVERFLOW

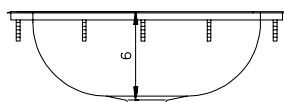
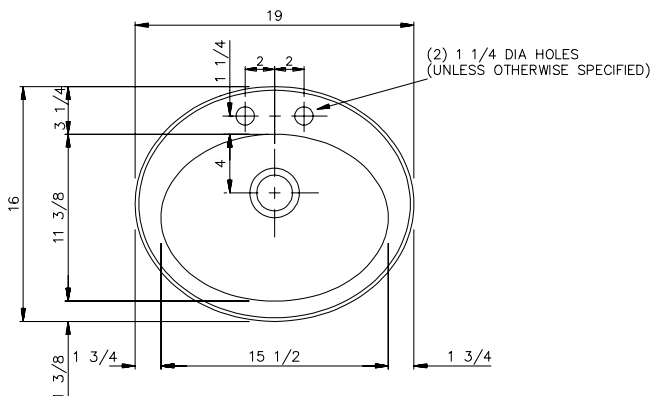


STANDARD LAVATORY  
DRAIN OPENING

OLF - 1619

CUTOUT  
DIMENSIONS

TRACE OUTLINE OF BOWL CUT  
3/8" INSIDE TRACING LINE



#15 DRAIN OPENING

OLR - 1619

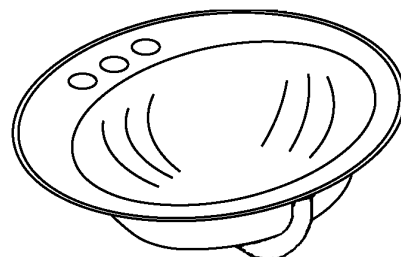
CUTOUT  
DIMENSIONS

TRACE OUTLINE OF BOWL CUT  
3/8" INSIDE TRACING LINE

FUNCTIONAL DESIGN, QUALITY, AND SPECIFICATIONS LISTED DESCRIBE THE JUST STANDARD OF QUALITY. WHEN MAKING COMPARISONS WITH OTHER OFFERINGS, INSIST ON THE JUST QUALITY OF CONSTRUCTION. FOR ADDITIONAL INFORMATION REGARDING THE COMPLETE LINE OF JUST SINKS, FAUCETS AND DRAINS, VISIT OUR WEB SITE AT [www.justmfg.com](http://www.justmfg.com)

OLF/OLR - SERIES - A - 18 GA.

OVAL BOWL



OLF-1619

## SPECIFICATION

Seamless die-drawn construction of type 304, 18-8 stainless steel. Interior and top surfaces polished to a non-porous Hand-Blended Just Finish. Fully coated underside insulates for sound, and reduces condensation. OLF-1619 punched for standard lavatory drain. OLR-1619 punched for Just J-15-FS unless otherwise specified.

## To be specified :

- Faucet hole punching:
  - ☐ (1) Hole Centered
  - ☐ (2) Holes on 4" centers(illustrated lower left)
  - ☐ (3) Holes on 2 "centers(illustrated top left)
  - ☐ Alternate Punching:
    - Faucet Model: \_\_\_\_\_
    - Punching required: \_\_\_\_\_

Job Name \_\_\_\_\_  
Customer \_\_\_\_\_  
Architect/Engineer \_\_\_\_\_

APPROVED FOR MANUFACTURING

MODEL NO. \_\_\_\_\_ QTY. \_\_\_\_\_

COMPANY \_\_\_\_\_

TITLE \_\_\_\_\_ DATE \_\_\_\_\_

SIGNATURE \_\_\_\_\_

JUST MANUFACTURING COMPANY

9233 KING STREET . FRANKLIN PARK . ILLINOIS . 60131-2111

PH: 847-678-5150

FAX: 847-678-6817

E-MAIL: [custserv@justmfg.com](mailto:custserv@justmfg.com)

[www.justmfg.com](http://www.justmfg.com)

REVISED-5/2004