



INSTITUTIONAL GROUP



ADA COMPLIANT

SPECIFICATION - HANDWASH SINK NO ENDSPLASHES

Fabricated of 20 gauge type 304 stainless steel. Exposed surfaces polished with a Hand-Blended Just Finish. Integral support bracket at rear. Certified to NSF Standard 2. Includes one 14 gauge stainless steel wall clip.

JS-45-TGA gooseneck faucet with aerator. Spout has 3-1/2" reach, and measures 5-1/2" from inlet centerline to top of spout. (4"O.C. supply).

JS-47-TGSA backsplash mounted gooseneck faucet and aerator, with 4-1/16" spout reach. 10-3/16" from inlet centerline to top of spout (8"O.C. supply).

J-15-FS Chrome plated brass drain with flat grid strainer. 1-1/2" O.D. chrome plated tailpiece, 4" long.

JTN-150 P-Trap Solid, non adjustable cast brass P-trap with brass slip nut. Hex head cleanout to have neoprene O-ring and top to be flush with inside bottom of J-bend.

The following model does not include faucets and fittings.

A-544-FS

	Model No.	Faucet	Drain	Trap
<input type="checkbox"/>	A-544-FS-TA	JS-45-TGA	J-15-FS	JTN-150
<input type="checkbox"/>	A-544-FS-T	JS-47-TGSA	J-15-FS	JTN-150
<input type="checkbox"/>	A-544-FS	NONE	NONE	NONE

MODEL NO.: _____ QTY: _____

TAG/ITEM: _____

JOB NAME _____

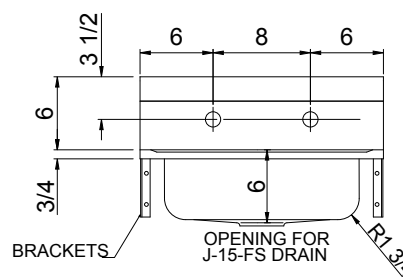
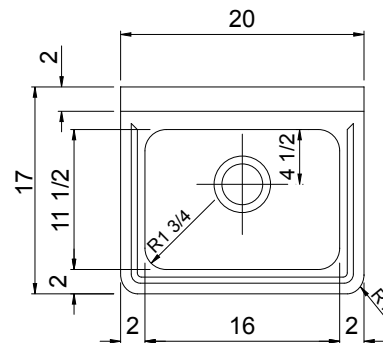
SIGNATURE: _____

A-544-FS

WALL-MOUNT HANDWASH SINK



A-544-FS-T



A-544-FS-TA*

A-544-FS-T

A-544-FS

*HOLES PUNCHED 4"O.C. FOR "TA" MODEL

FUNCTIONAL DESIGN, QUALITY, AND SPECIFICATIONS LISTED DESCRIBE THE JUST STANDARD OF QUALITY. WHEN MAKING COMPARISONS WITH OTHER OFFERINGS, INSIST ON THE JUST QUALITY OF CONSTRUCTION. FOR ADDITIONAL INFORMATION REGARDING THE COMPLETE LINE OF **JUST** SINKS, FAUCETS AND DRAINS, VISIT OUR WEB SITE AT www.justmfg.com

JUST MANUFACTURING COMPANY

9233 KING STREET . FRANKLIN PARK . ILLINOIS . 60131-2111

PH: 847-678-5150

FAX: 847-678-6817

E-MAIL: custserv@justmfg.com

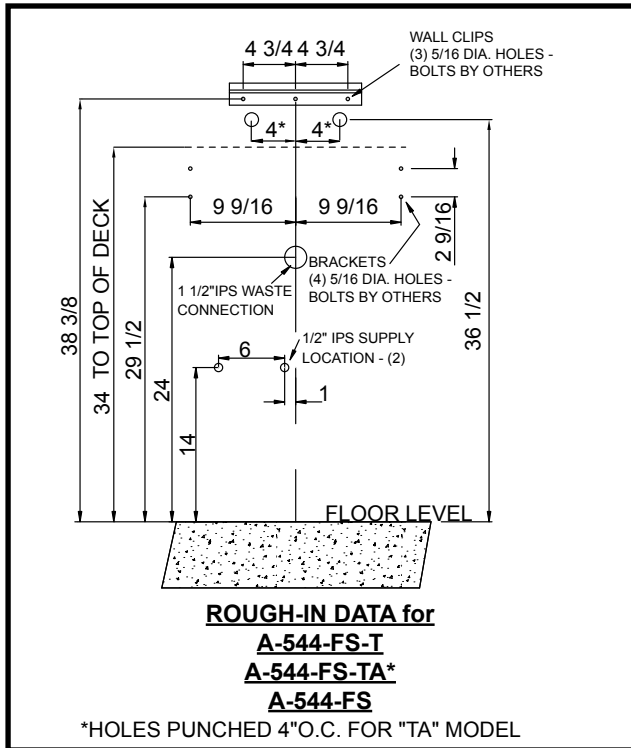
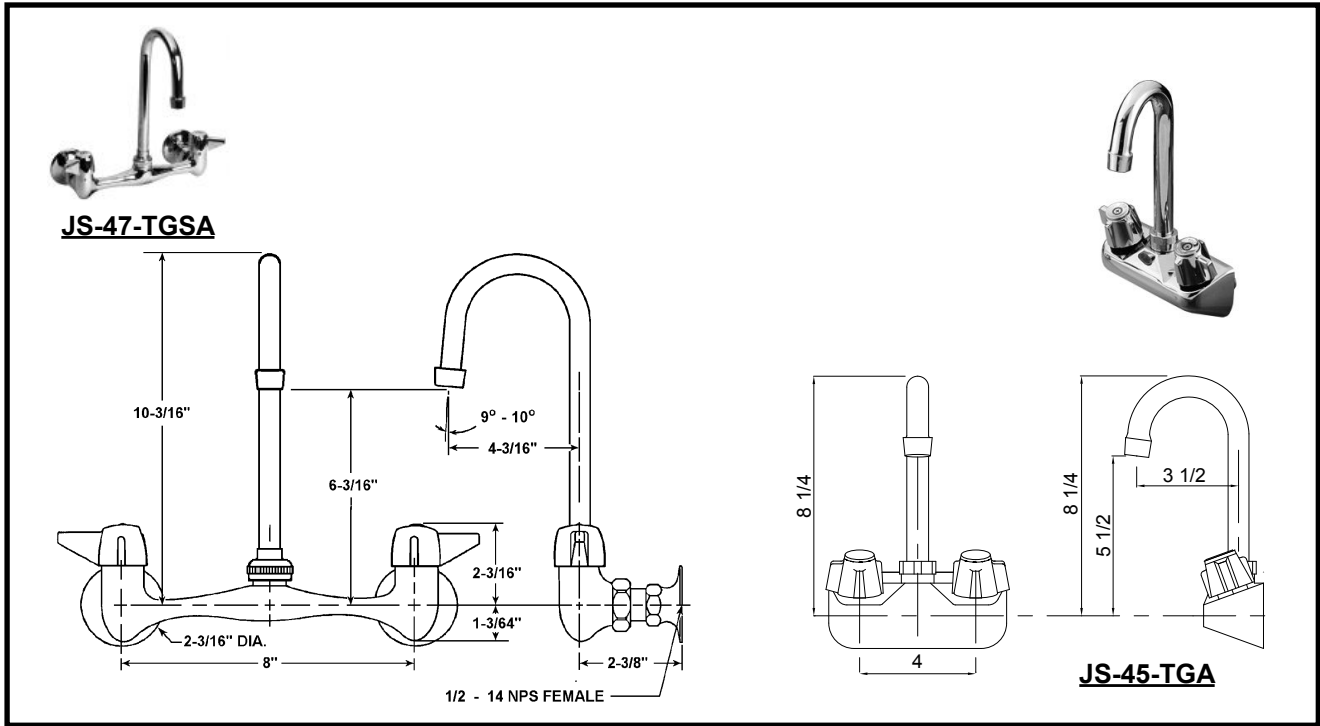
www.justmfg.com



INSTITUTIONAL GROUP

A-544-FS ROUGH-IN DATA

SUBMITTAL DATA



JUST MFG. COMPANY CONTINUES TO MAKE QUALITY AND FUNCTIONALITY A MARK OF THE JUST PRODUCT LINE. TO DO SO REQUIRES THAT WE RESERVE THE RIGHT TO CHANGE PRODUCT INFORMATION WITHOUT NOTICE. FOR THE MOST CURRENT AND ACCURATE INFORMATION REGARDING THE COMPLETE LINE OF JUST SINKS, FAUCETS AND DRAINS, CLICK ON THE **SPEC LINE DRAWINGS** LINK ON OUR WEB SITE AT www.justmfg.com

JUST MANUFACTURING COMPANY

9233 KING STREET . FRANKLIN PARK . ILLINOIS . 60131-2111

PH: 847-678-5150 . FAX: 847-678-6817

E-MAIL: custserv@justmfg.com . www.justmfg.com