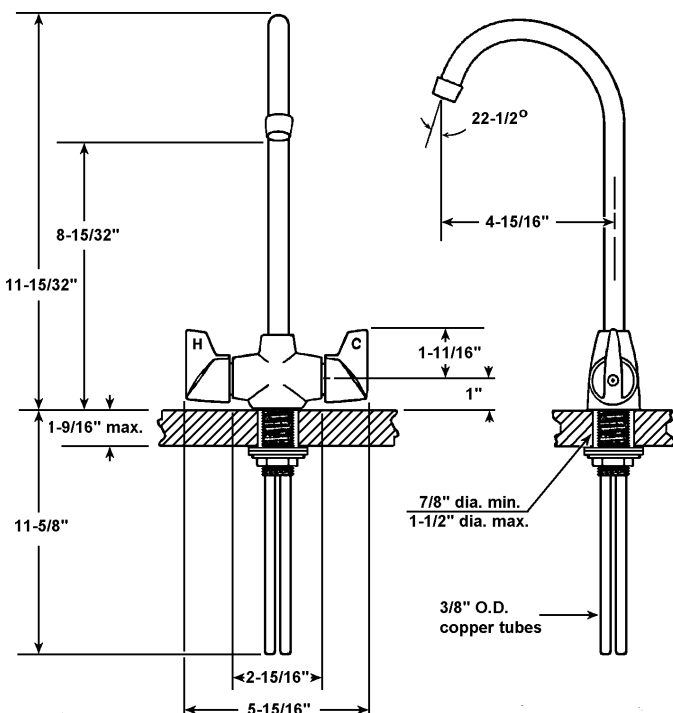




## FAUCET GROUP



### OPTIONS

#### HANDLES

- 4" Wrist Blades "W4"
- 6" Wrist Blades "W6"
- Canopy Type "C" (not ADA)
- Acrylic "P" (not ADA)

#### AERATOR

- Duo Stream Swivel "B"
- Rose Spray "J-RS"

#### VANDAL RESISTANT

- Aerator "VR-A"
- Handles "VR-H"

Job Name \_\_\_\_\_  
Customer \_\_\_\_\_  
Architect/Engineer \_\_\_\_\_

#### APPROVED FOR MANUFACTURING

MODEL NO. \_\_\_\_\_ QTY. \_\_\_\_\_

COMPANY \_\_\_\_\_

TITLE \_\_\_\_\_ DATE \_\_\_\_\_

SIGNATURE \_\_\_\_\_

REVISED-5/2004

# JGN-740

## BAR & PANTRY FAUCET



### TECHNICAL DATA

#### CONSTRUCTION:

Single hole deck mounted  
Solid cast brass body  
Brass rigid gooseneck spout  
Replaceable seats  
Brass quarter turn quick compression stem units  
Replaceable reinforced nitrile rubber packing  
Replaceable Buna-N seat washers  
Chrome plated die cast lever handles  
Handles are indexed "H" & "C"  
Equipped with water saving aerator  
Conforms with ANSI standard 112.18.1  
Certified to NSF/ANSI 61

#### FINISH

Polished chrome plate

#### FLOW RATE

2.2 GPM flow restricting aerator

#### A.D.A. COMPLIANT

Yes

#### VARIANTS

JGN-750 = JGN-740 w/ swivel spout

JUST MFG. COMPANY CONTINUES TO MAKE QUALITY AND FUNCTIONALITY A MARK OF THE JUST PRODUCT LINE. TO DO SO REQUIRES THAT WE RESERVE THE RIGHT TO CHANGE PRODUCT INFORMATION WITHOUT NOTICE. DIMENSIONS MAY VARY AND ARE SUBJECT TO CHANGE WITHOUT NOTICE. NO RESPONSIBILITY IS ASSUMED FOR USE OF SUPERCEDED OR VOIDED DATA. FOR THE MOST CURRENT AND ACCURATE INFORMATION REGARDING THE COMPLETE LINE OF JUST SINKS, FAUCETS AND DRAINS, CLICK ON THE **SPEC LINE DRAWINGS** LINK ON OUR WEB SITE AT [www.justmfg.com](http://www.justmfg.com)

#### JUST MANUFACTURING COMPANY

9233 KING STREET . FRANKLIN PARK . ILLINOIS . 60131-2111

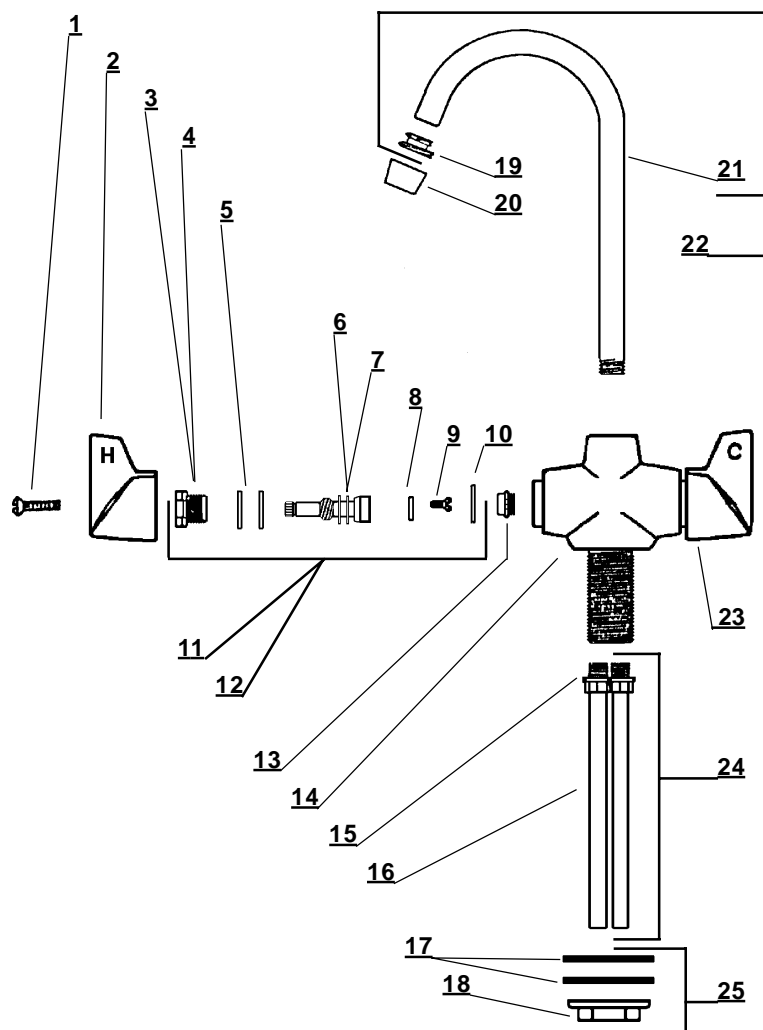
PH: 847-678-5150 . FAX: 847-678-6817

E-MAIL: [custserv@justmfg.com](mailto:custserv@justmfg.com) . [www.justmfg.com](http://www.justmfg.com)

SUBMITTAL DATA



BAR & PANTRY FAUCET



Item No.	Part No.	Description
1	107-H	Handle Screw
2	PF-518-H	Handle - Hot
3	454-EWC	Bonnet ( Cold Side )
4	454-EWH	Bonnet ( Hot Side )
5	1038-453	O-Ring
6	454-FL	Stem ( Cold Side )
7	454-FR	Stem ( Hot Side )
8	901-WN	Seat Washer
9	104	Seat Washer Screw
10	1028-Y	Gasket
11	SU-454-EL	Stem Sub-Unit (Cold Side)
12	SU-454-ER	Stem Sub-Unit (Hot Side)
13	263-BC	Replaceable Seat
14	1759-J	Body (not available separately)
15	1038-CC	"O" ring
16	SU-702-10	Supply tube
17	52	Steel Washer
18	4090-SK02	Locknut
19	PF-166-U	Adaptor
20	30-M	Aerator
21	PF-157-J	Spout
22	SU-157-JA	Spout Assembly
23	PF-518-C	Handle - Cold
24	G-702-10	Supply tube assembly
25	G-284	Nut & washer mounting kit

JUST MFG. COMPANY CONTINUES TO MAKE QUALITY AND FUNCTIONALITY A MARK OF THE JUST PRODUCT LINE. TO DO SO REQUIRES THAT WE RESERVE THE RIGHT TO CHANGE PRODUCT INFORMATION WITHOUT NOTICE. DIMENSIONS MAY VARY AND ARE SUBJET TO CHANGE WITHOUT NOTICE. NO RESPONSIBILITY IS ASSUMED FOR USE OF SUPERCEDED OR VOIDED DATA. FOR THE MOST CURRENT AND ACCURATE INFORMATION REGARDING THE COMPLETE LINE OF JUST SINKS, FAUCETS AND DRAINS, CLICK ON THE **SPEC LINE DRAWINGS** LINK ON OUR WEB SITE AT [www.justmfg.com](http://www.justmfg.com)

JUST MANUFACTURING COMPANY

9233 KING STREET . FRANKLIN PARK . ILLINOIS . 60131-2111

PH: 847-678-5150 . FAX: 847-678-6817

E-MAIL: [custserv@justmfg.com](mailto:custserv@justmfg.com) . [www.justmfg.com](http://www.justmfg.com)