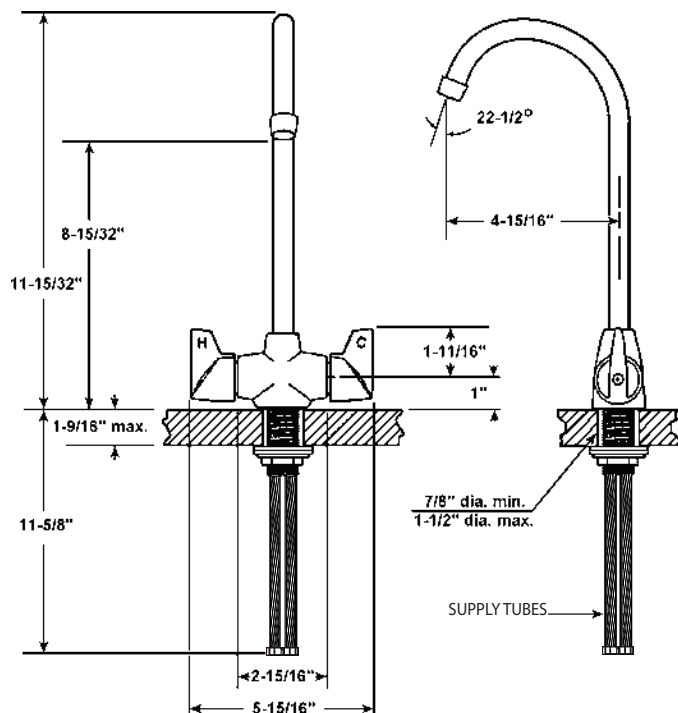




JGN-740

FAUCET GROUP
CONCEALED LEDGEMOUNT

SUBMITTAL DATA



TECHNICAL DATA CONSTRUCTION:

Single hole deck mounted
Solid cast brass body
Brass rigid gooseneck spout
Replaceable seats
Brass quarter turn quick compression stem units
Replaceable reinforced nitrile rubber packing
Replaceable Buna-N seat washers
Chrome plated die cast lever handles
Handles are indexed "H" & "C"
Equipped with water saving aerator
Certified by IAPMO R&T to:

- * NSF/ANSI 61- 2010a
- * NSF/ANSI 372
- * Low Lead
- * ANSI A112.18.1 / CSA B125.1
- * UPC
- * IPC
- * ADA Compliant



FINISH

Polished chrome plate

FLOW RATE

1.5 GPM flow restricting aerator

A.D.A. COMPLIANT

Yes

VARIANTS

JGN-750 = JGN-740 w/ swivel spout

JUST MFG. COMPANY CONTINUES TO MAKE QUALITY AND FUNCTIONALITY A MARK OF THE JUST PRODUCT LINE. WE RESERVE THE RIGHT TO CHANGE PRODUCT INFORMATION WITHOUT NOTICE. DIMENSIONS MAY CHANGE AND MAY BE SUBJECT TO CHANGE WITHOUT NOTICE. NO RESPONSIBILITY IS ASSUMED FOR USE OF SUPERCEDED OR VOIDED DATA. JUST MFG. CO. SINKS ARE MADE IN THE U.S.A. WHEN COMPARING OTHER BRAND PRODUCTS, BE SURE TO COMPARE USA QUALITY ALONG WITH FEATURES AND DIMENSIONS.

OPTIONS		
AERATORS / FLOW CONTROL		
<input type="checkbox"/> 0.5 GPM	<input type="checkbox"/> 2.2 GPM	
<input type="checkbox"/> 1.0 GPM		
HANDLES		
<input type="checkbox"/> W4 - 4" Wrist Blades		
<input type="checkbox"/> W6 - 6" Wrist Blades		
VANDAL RESISTANT		
<input type="checkbox"/> Handles - VR-H		
<input type="checkbox"/> Aerator - VR-A		

APPROVED FOR MANUFACTURING

MODEL NO.: **JGN-740** QTY: _____

JOB NAME: _____

TAG/ITEM: _____

CUSTOMER: _____

SIGNATURE: _____

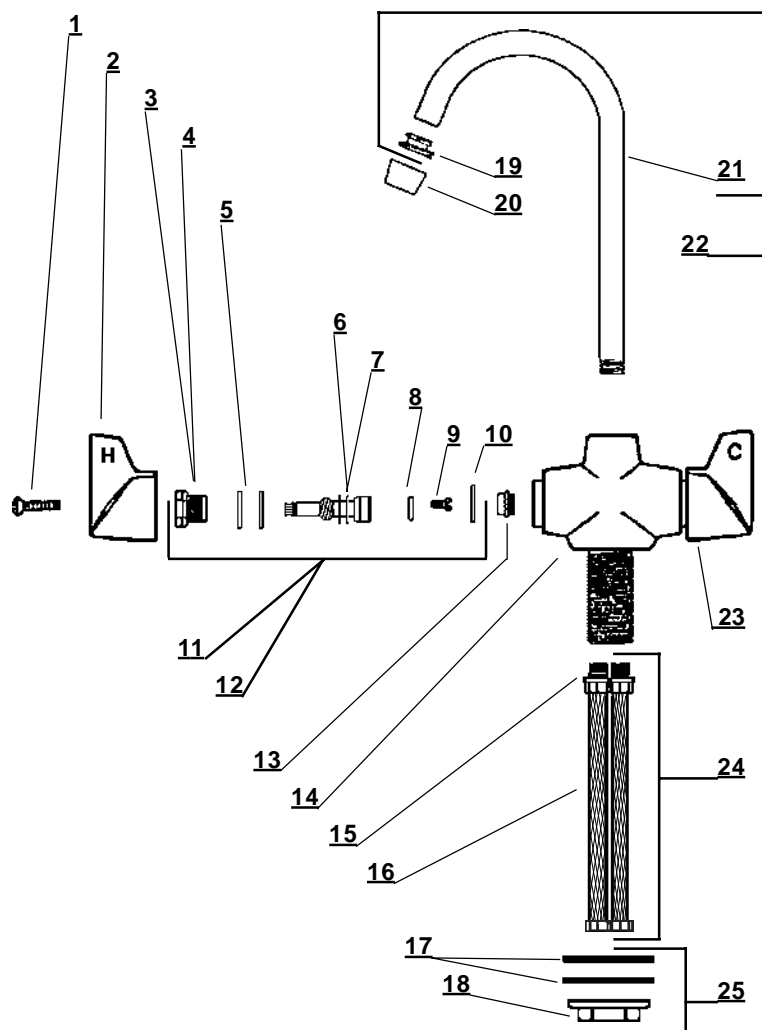
JUST MANUFACTURING COMPANY

9233 KING STREET FRANKLIN PARK ILLINOIS 60131-2111

PH: 847-678-5150 . FAX: 847-678-6817 . E-MAIL: custserv@justmfg.com . www.justmfg.com



BAR & PANTRY FAUCET



Item No.	Part No.	Description
1	107-H	Handle Screw
2	PF-518-H	Handle - Hot
3	454-EWC	Bonnet (Cold Side)
4	454-EWH	Bonnet (Hot Side)
5	1038-453	O-Ring
6	454-FL	Stem (Cold Side)
7	454-FR	Stem (Hot Side)
8	901-WN	Seat Washer
9	104	Seat Washer Screw
10	1028-Y	Gasket
11	SU-454-EL	Stem Sub-Unit (Cold Side)
12	SU-454-ER	Stem Sub-Unit (Hot Side)
13	263-BC	Replaceable Seat
14	1759-J	Body (not available separately)
15	1038-CC	"O" ring
16	SU-702-10	Supply tube
17	52	Steel Washer
18	4090-SK02	Locknut
19	PF-166-U	Adaptor
20	30-M.1.5	Aerator- 1.5 GPM
21	PF-157-J	Spout
22	SU-157-JA	Spout Assembly
23	PF-518-C	Handle - Cold
24	G-702-10	Supply tube assembly
25	G-284	Nut & washer mounting kit

JUST MFG. COMPANY CONTINUES TO MAKE QUALITY AND FUNCTIONALITY A MARK OF THE JUST PRODUCT LINE. TO DO SO REQUIRES THAT WE RESERVE THE RIGHT TO CHANGE PRODUCT INFORMATION WITHOUT NOTICE. DIMENSIONS MAY VARY AND ARE SUBJET TO CHANGE WITHOUT NOTICE. NO RESPONSIBILITY IS ASSUMED FOR USE OF SUPERCEDED OR VOIDED DATA. FOR THE MOST CURRENT AND ACCURATE INFORMATION REGARDING THE COMPLETE LINE OF JUST SINKS, FAUCETS AND DRAINS, CLICK ON THE **SPEC LINE DRAWINGS** LINK ON OUR WEB SITE AT www.justmfg.com

JUST MANUFACTURING COMPANY

9233 KING STREET . FRANKLIN PARK . ILLINOIS . 60131-2111

PH: 847-678-5150 . FAX: 847-678-6817

E-MAIL: custserv@justmfg.com . www.justmfg.com