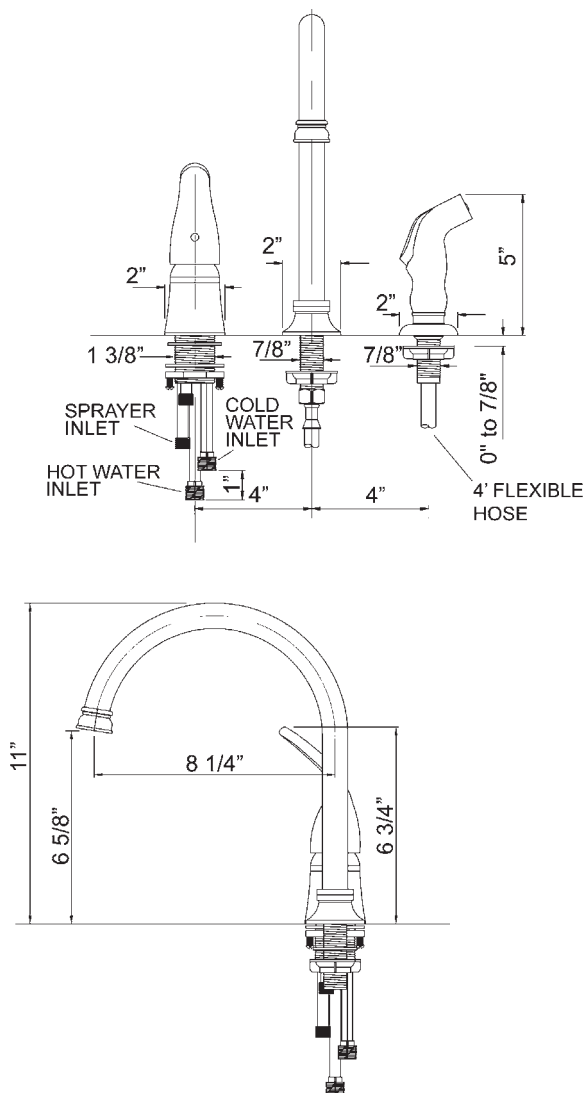




FAUCET GROUP



J-990-WF

DECKMOUNT SINK FAUCET



TECHNICAL DATA

CONSTRUCTION:

Single lever top mounted kitchen sink faucet
Control connected to spout with 12" flexible hose
Tubular brass swing spout
Brass control housing, aerator adaptor, and escutcheon
Chrome plated die cast lever handle
Washerless valve cartridge
1/2" IPS connections
Equipped with water saving aerator
Conforms with ANSI standard 112.18.1
Certified to NSF/ANSI 61

FINISH

Triple plated polished chrome

FLOW RATE

2.0 GPM max.

A.D.A. COMPLIANT

Yes

VARIANTS

J-990-LS = J-990-WF less Spray

JUST MFG. COMPANY CONTINUES TO MAKE QUALITY AND FUNCTIONALITY A MARK OF THE JUST PRODUCT LINE. TO DO SO REQUIRES THAT WE RESERVE THE RIGHT TO CHANGE PRODUCT INFORMATION WITHOUT NOTICE. DIMENSIONS MAY VARY AND ARE SUBJECT TO CHANGE WITHOUT NOTICE. NO RESPONSIBILITY IS ASSUMED FOR USE OF SUPERCEDED OR VOIDED DATA. FOR THE MOST CURRENT AND ACCURATE INFORMATION REGARDING THE COMPLETE LINE OF JUST SINKS, FAUCETS AND DRAINS, CLICK ON THE **SPEC LINE DRAWINGS** LINK ON OUR WEB SITE AT www.justmfg.com

JUST MANUFACTURING COMPANY

9233 KING STREET . FRANKLIN PARK . ILLINOIS . 60131-2111

PH: 847-678-5150 . FAX: 847-678-6817

E-MAIL: custserv@justmfg.com . www.justmfg.com

SUBMITTAL DATA

Job Name _____
Customer _____
Architect/Engineer _____

APPROVED FOR MANUFACTURING

MODEL NO. _____ QTY. _____

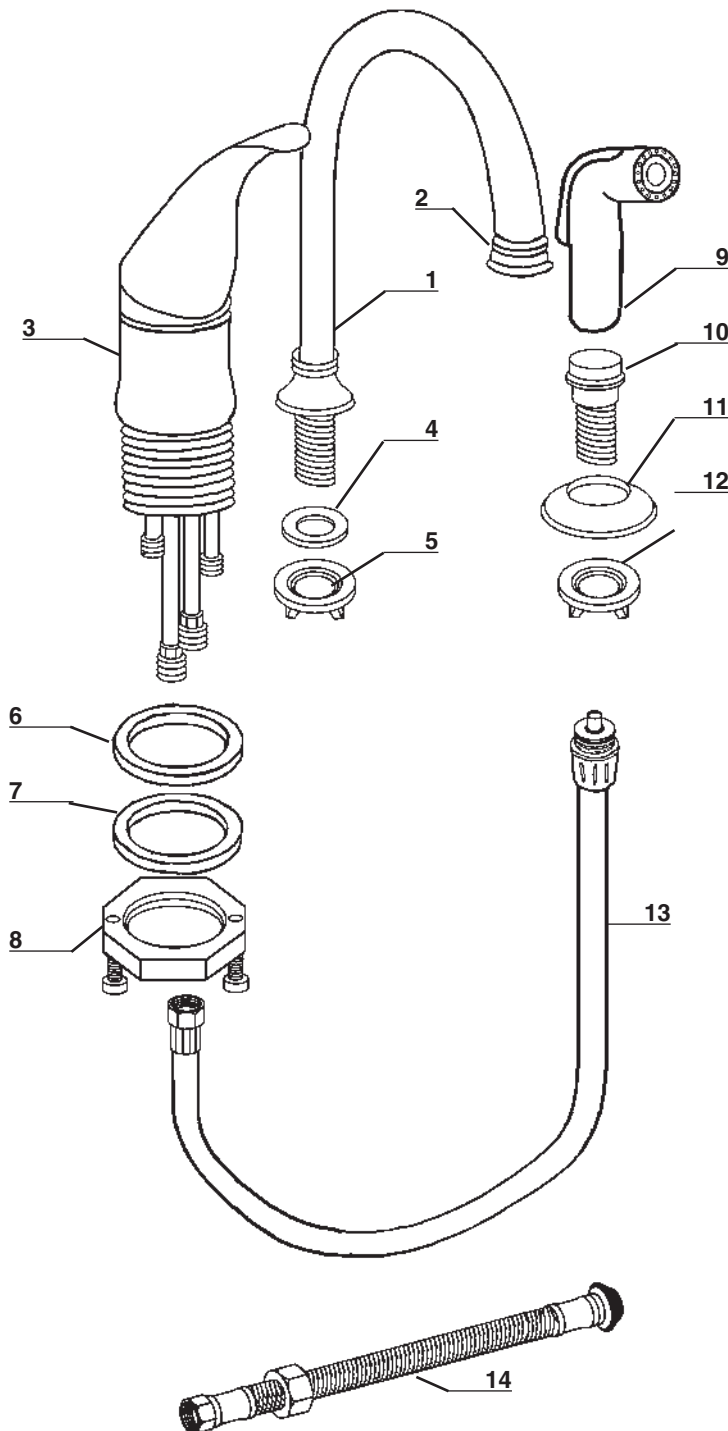
COMPANY _____

TITLE _____ DATE _____

SIGNATURE _____



DECKMOUNT SINK FAUCET



Item No.	Part No.	Description
1	JL-9901	Spout
2	JL-9902	Aerator
3	JL-9903	Valve assembly
4	JL-9904	Spout Washer
5	JL-9905	Spout nut
6	JL-9906	Rubber washer
7	JL-9907	Steel washer
8	JL-9908	Brass lock nut
9	JL-9909	Spray head
10	JL-9910	Hose guide
11	JL-9911	Hose guide trim
12	JL-9912	Hose guide net
13	JL-9913	Spray hose
14	JL-9914	Spout supply line

JUST MFG. COMPANY CONTINUES TO MAKE QUALITY AND FUNCTIONALITY A MARK OF THE JUST PRODUCT LINE. TO DO SO REQUIRES THAT WE RESERVE THE RIGHT TO CHANGE PRODUCT INFORMATION WITHOUT NOTICE. DIMENSIONS MAY VARY AND ARE SUBJECT TO CHANGE WITHOUT NOTICE. NO RESPONSIBILITY IS ASSUMED FOR USE OF SUPERCEDED OR VOIDED DATA. FOR THE MOST CURRENT AND ACCURATE INFORMATION REGARDING THE COMPLETE LINE OF JUST SINKS, FAUCETS AND DRAINS, CLICK ON THE **SPEC LINE DRAWINGS** LINK ON OUR WEB SITE AT www.justmfg.com

JUST MANUFACTURING COMPANY

9233 KING STREET, FRANKLIN PARK, ILLINOIS, 60131-2111

PH: 847-678-5150 . FAX: 847-678-6817

E-MAIL: custserv@justmfg.com .www.justmfg.com