

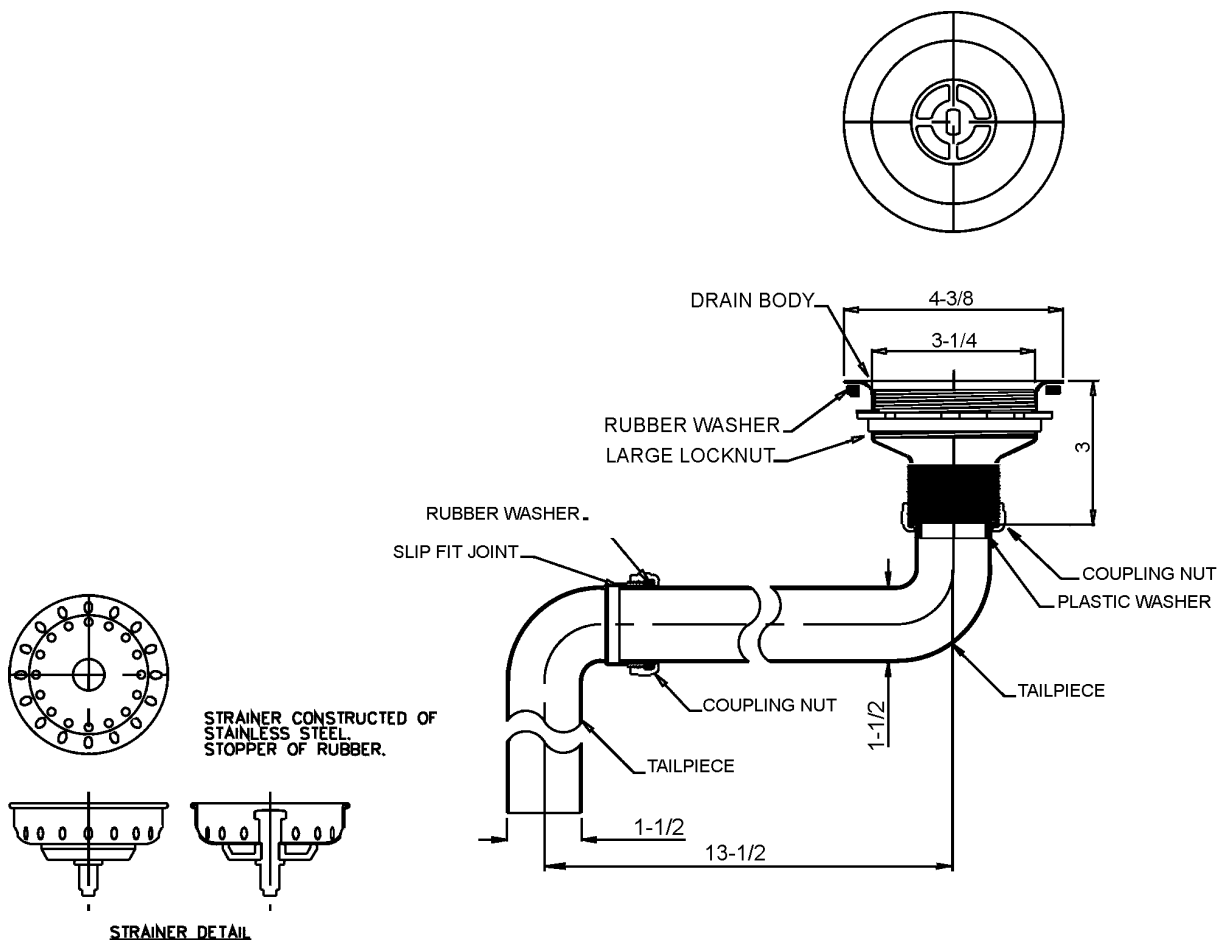


## FITTINGS GROUP

J-ADA-35

### ADA Compliant Stainless Steel Drain Assembly

SUBMITTAL DATA



## TECHNICAL DATA

### DRAIN:

Body of stainless steel  
Strainer of stainless steel  
Stopper of rubber

### TAILPIECE:

17 ga. Chrome plated brass

### LOCK NUT:

Die-cast zinc

### COUPLING NUT:

Die-cast

### VARIANTS

None

### Dimensions tolerance +/- 1/4".

Dimensions may vary and are subject to change. No responsibility is assumed for use of superseded or voided data.

FUNCTIONAL DESIGN, QUALITY, AND SPECIFICATIONS LISTED DESCRIBE THE JUST STANDARD OF QUALITY. WHEN MAKING COMPARISONS WITH OTHER OFFERINGS, INSIST ON THE JUST QUALITY OF CONSTRUCTION. FOR ADDITIONAL INFORMATION REGARDING THE COMPLETE LINE OF **JUST** SINKS, FAUCETS AND DRAINS, VISIT OUR WEB SITE AT [www.justmfg.com](http://www.justmfg.com)

### JUST MANUFACTURING COMPANY

9233 KING STREET . FRANKLIN PARK . ILLINOIS . 60131-2111

PH: 847-678-5150 . FAX: 847-678-6817

E-MAIL: [custserv@justmfg.com](mailto:custserv@justmfg.com) . [www.justmfg.com](http://www.justmfg.com)