

# SOLVENT WELD FITTINGS

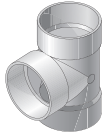
## Standards

Styrene A.S.T.M. D-2852  
PVC A.S.T.M. D-3034  
D-2751, D-2729

## Abbreviations Used for Connections

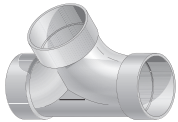
HUB = HUB Socket  
SPT = Spigot  
MPT = Male Pipe Thread  
FPT = Female Pipe Thread  
DWV = Drain, Waste and Vent  
S&D = Sewer and Drain

## Tee



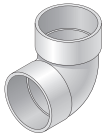
|                | Part No. | Description                      | Color | Pkg. Qty. | Wt. Ea. (lbs.) | Product Class |
|----------------|----------|----------------------------------|-------|-----------|----------------|---------------|
| <b>PVC</b>     | 3P01     | 3" PVC Tee (HUB X HUB X HUB)     | White | 35        | 0.57           | 30PV          |
|                | 4P01     | 4" PVC Tee (HUB X HUB X HUB)     | White | 20        | 0.95           | 30PV          |
|                | 6P01     | 6" PVC Tee (HUB X HUB X HUB)     | White | 9         | 3.66           | 30PV          |
|                | 64P01    | 6"X4" PVC Tee (HUB X HUB X HUB)  | White | 8         | 2.38           | 30PV          |
|                | 8P01     | 8" PVC Tee (HUB X HUB X HUB)     | White | 2         | 3.00           | 30PV          |
|                | 84P01    | 8"X4" PVC Tee (HUB X HUB X HUB)  | White | 7         | 4.72           | 30PV          |
|                | 86P01    | 8"X6" PVC Tee (HUB X HUB X HUB)  | White | 3         | 5.00           | 30PV          |
| <b>STYRENE</b> | 301      | 3" Styrene Tee (HUB X HUB X HUB) | White | 35        | 0.43           | 30ST          |
|                | 401      | 4" Styrene Tee (HUB X HUB X HUB) | White | 20        | 0.60           | 30ST          |
|                | 601      | 6" Styrene Tee (HUB X HUB X HUB) | White | 9         | 2.78           | 30ST          |

## Double Cleanout



|            | Part No. | Description                              | Color | Pkg. Qty. | Wt. Ea. (lbs.) | Product Class |
|------------|----------|--|-------|-----------|----------------|---------------|
| <b>PVC</b> | 417P     | 4" PVC Double Cleanout (HUB X HUB X HUB) | White | 24        | 1.41           | 30PV          |

## 90 Degree Elbow



|                | Part No. | Description                            | Color | Pkg. Qty. | Wt. Ea. (lbs.) | Product Class |
|----------------|----------|--|-------|-----------|----------------|---------------|
| <b>PVC</b>     | 3P02     | 3" PVC 90 Degree Elbow (HUB X HUB)     | White | 40        | 0.40           | 30PV          |
|                | 4P02     | 4" PVC 90 Degree Elbow (HUB X HUB)     | White | 25        | 0.68           | 30PV          |
|                | 6P02     | 6" PVC 90 Degree Elbow (HUB X HUB)     | White | 6         | 3.00           | 30PV          |
|                | 8P02     | 8" PVC 90 Degree Elbow (HUB X HUB)     | White | 4         | 6.50           | 30PV          |
| <b>STYRENE</b> | 302      | 3" Styrene 90 Degree Elbow (HUB X HUB) | White | 40        | 0.33           | 30ST          |
|                | 402      | 4" Styrene 90 Degree Elbow (HUB X HUB) | White | 25        | 0.48           | 30ST          |
|                | 602      | 6" Styrene 90 Degree Elbow (HUB X HUB) | White | 6         | 2.33           | 30ST          |

## 90 Degree Long Turn Elbow



|                | Part No. | Description                                      | Color | Pkg. Qty. | Wt. Ea. (lbs.) | Product Class |
|----------------|----------|--|-------|-----------|----------------|---------------|
| <b>PVC</b>     | 31P0     | 3" PVC 90 Degree Long Turn Elbow (HUB X HUB)     | White | 30        | 0.46           | 30PV          |
|                | 41P0     | 4" PVC 90 Degree Long Turn Elbow (HUB X HUB)     | White | 20        | 0.85           | 30PV          |
| <b>STYRENE</b> | 310      | 3" Styrene 90 Degree Long Turn Elbow (HUB X HUB) | White | 30        | 0.30           | 30ST          |
|                | 410      | 4" Styrene 90 Degree Long Turn Elbow (HUB X HUB) | White | 20        | 0.65           | 30ST          |

## 90 Degree Long Turn Street Elbow



|                | Part No. | Description   | Color | Pkg. Qty. | Wt. Ea. (lbs.) | Product Class |
|----------------|----------|---|-------|-----------|----------------|---------------|
| <b>PVC</b>     | 31P0ST   | 3" PVC 90 Degree Long Turn Street Elbow (SPT X HUB)     | White | 20        | 0.90           | 30PV          |
|                | 41P0ST   | 4" PVC 90 Degree Long Turn Street Elbow (SPT X HUB)     | White | 20        | 1.25           | 30PV          |
| <b>STYRENE</b> | 310ST    | 3" Styrene 90 Degree Long Turn Street Elbow (SPT X HUB) | White | 20        | 0.65           | 30ST          |
|                | 410ST    | 4" Styrene 90 Degree Long Turn Street Elbow (SPT X HUB) | White | 20        | 1.00           | 30ST          |

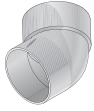
## 45 Degree Elbow



|                | Part No. | Description                            | Color | Pkg. Qty. | Wt. Ea. (lbs.) | Product Class |
|----------------|----------|--|-------|-----------|----------------|---------------|
| <b>PVC</b>     | 3P03     | 3" PVC 45 Degree Elbow (HUB X HUB)     | White | 40        | 0.32           | 30PV          |
|                | 4P03     | 4" PVC 45 Degree Elbow (HUB X HUB)     | White | 30        | 0.53           | 30PV          |
|                | 6P03     | 6" PVC 45 Degree Elbow (HUB X HUB)     | White | 8         | 2.12           | 30PV          |
|                | 8P03     | 8" PVC 45 Degree Elbow (HUB X HUB)     | White | 6         | 4.33           | 30PV          |
| <b>STYRENE</b> | 303      | 3" Styrene 45 Degree Elbow (HUB X HUB) | White | 40        | 0.25           | 30ST          |
|                | 403      | 4" Styrene 45 Degree Elbow (HUB X HUB) | White | 30        | 0.35           | 30ST          |
|                | 603      | 6" Styrene 45 Degree Elbow (HUB X HUB) | White | 8         | 1.63           | 30ST          |

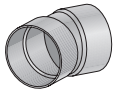
Note: All dimensions are nominal. All weights are for shipping purposes only. Availability is subject to change.

## 45 Degree Street Elbow



|                | Part No. | Description                                   | Color | Pkg. Qty. | Wt. Ea. (lbs.) | Product Class |
|----------------|----------|---|-------|-----------|----------------|---------------|
| <b>PVC</b>     | 3P03ST   | 3" PVC 45 Degree Street Elbow (SPT X HUB)     | White | 30        | 0.33           | 30PV          |
|                | 4P03ST   | 4" PVC 45 Degree Street Elbow (SPT X HUB)     | White | 30        | 0.86           | 30PV          |
|                | 6P03ST   | 6" PVC 45 Degree Street Elbow (SPT X HUB)     | White | 10        | 1.80           | 30PV          |
| <b>STYRENE</b> | 303ST    | 3" Styrene 45 Degree Street Elbow (SPT X HUB) | White | 30        | 0.27           | 30ST          |
|                | 403ST    | 4" Styrene 45 Degree Street Elbow (SPT X HUB) | White | 30        | 0.67           | 30ST          |

## 22 1/2 Degree Elbow



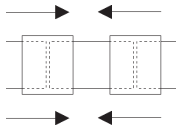
|                | Part No. | Description                                       | Color | Pkg. Qty. | Wt. Ea. (lbs.) | Product Class |
|----------------|----------|---|-------|-----------|----------------|---------------|
| <b>PVC</b>     | 3P04     | 3" PVC 22 1/2 Degree Street Elbow (HUB X HUB)     | White | 25        | 0.32           | 30PV          |
|                | 4P04     | 4" PVC 22 1/2 Degree Street Elbow (HUB X HUB)     | White | 20        | 0.45           | 30PV          |
|                | 6P04     | 6" PVC 22 1/2 Degree Street Elbow (HUB X HUB)     | White | 20        | 1.60           | 30PV          |
| <b>STYRENE</b> | 304      | 3" Styrene 22 1/2 Degree Street Elbow (HUB X HUB) | White | 25        | 0.24           | 30ST          |
|                | 404      | 4" Styrene 22 1/2 Degree Street Elbow (HUB X HUB) | White | 20        | 0.30           | 30ST          |

## Coupling



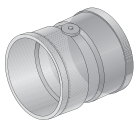
|                | Part No. | Description                     | Color | Pkg. Qty. | Wt. Ea. (lbs.) | Product Class |
|----------------|----------|---------------------------------|-------|-----------|----------------|---------------|
| <b>PVC</b>     | 3P05     | 3" PVC Coupling (HUB X HUB)     | White | 120       | 0.22           | 30PV          |
|                | 4P05     | 4" PVC Coupling (HUB X HUB)     | White | 45        | 0.37           | 30PV          |
|                | 6P05     | 6" PVC Coupling (HUB X HUB)     | White | 10        | 1.30           | 30PV          |
|                | 8P05     | 8" PVC Coupling (HUB X HUB)     | White | 6         | 3.33           | 30PV          |
| <b>STYRENE</b> | 305      | 3" Styrene Coupling (HUB X HUB) | White | 120       | 0.17           | 30ST          |
|                | 405      | 4" Styrene Coupling (HUB X HUB) | White | 45        | 0.30           | 30ST          |
|                | 605      | 6" Styrene Coupling (HUB X HUB) | White | 10        | 0.89           | 30ST          |

## Sewer and Drain Repair Coupling



|            | Part No. | Description  | Color | Pkg. Qty. | Wt. Ea. (lbs.) | Product Class |
|------------|----------|--|-------|-----------|----------------|---------------|
| <b>PVC</b> | 3P05R    | 3" PVC Sewer and Drain Repair Coupling (HUB X HUB) | White | 60        | 0.25           | 30PV          |
|            | 4P05R    | 4" PVC Sewer and Drain Repair Coupling (HUB X HUB) | White | 45        | 0.46           | 30PV          |

## 5 Degree Angle Coupling



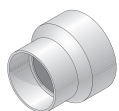
|            | Part No. | Description                                | Color | Pkg. Qty. | Wt. Ea. (lbs.) | Product Class |
|------------|----------|--|-------|-----------|----------------|---------------|
| <b>PVC</b> | 4P05A    | 4" PVC 5 Degree Angle Coupling (HUB X HUB) | White | 40        | 0.60           | 30PV          |

## Reducer Bushing (SPTxHUB)



|                | Part No. | Description   | Color | Pkg. Qty. | Wt. Ea. (lbs.) | Product Class |
|----------------|----------|---|-------|-----------|----------------|---------------|
| <b>PVC</b>     | 3P07     | 4"X3" PVC Reducer Bushing (SPTxHUB) (SPT X HUB)     | White | 20        | 0.45           | 30PV          |
|                | 6P07S    | 6"X4" PVC Reducer Bushing (SPTxHUB) (SPT X HUB)     | White | 20        | 1.10           | 30PV          |
| <b>STYRENE</b> | 307      | 4"X3" Styrene Reducer Bushing (SPTxHUB) (SPT X HUB) | White | 20        | 0.35           | 30ST          |

## Reducer Coupling

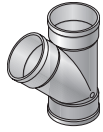


|                | Part No. | Description                                | Color | Pkg. Qty. | Wt. Ea. (lbs.) | Product Class |
|----------------|----------|--|-------|-----------|----------------|---------------|
| <b>PVC</b>     | 4P07     | 4"X3" PVC Reducer Coupling (HUB X HUB)     | White | 30        | 0.36           | 30PV          |
|                | 6P07     | 4"X6" PVC Reducer Coupling (HUB X HUB)     | White | 20        | 1.10           | 30PV          |
|                | 8P07     | 8"X6" PVC Reducer Coupling (HUB X HUB)     | White | 1         | 3.00           | 30PV          |
| <b>STYRENE</b> | 407      | 4"X3" Styrene Reducer Coupling (HUB X HUB) | White | 30        | 0.30           | 30ST          |
|                | 607      | 4"X6" Styrene Reducer Coupling (HUB X HUB) | White | 20        | 0.80           | 30ST          |

Note: All dimensions are nominal. All weights are for shipping purposes only. Availability is subject to change.

# SOLVENT WELD FITTINGS

## 45 Degree Wye



|                | Part No. | Description                                | Color | Pkg. Qty. | Wt. Ea. (lbs.) | Product Class |
|----------------|----------|--|-------|-----------|----------------|---------------|
| <b>PVC</b>     | 3P08     | 3" PVC 45 Degree Wye (HUB X HUB X HUB)     | White | 25        | 0.88           | 30PV          |
|                | 4P08     | 4" PVC 45 Degree Wye (HUB X HUB X HUB)     | White | 20        | 1.25           | 30PV          |
|                | 6P08     | 6" PVC 45 Degree Wye (HUB X HUB X HUB)     | White | 6         | 4.66           | 30PV          |
|                | 64P08    | 6"X4" PVC 45 Degree Wye (HUB X HUB X HUB)  | White | 8         | 2.88           | 30PV          |
|                | 8P08     | 8" PVC 45 Degree Wye (HUB X HUB X HUB)     | White | 2         | 11.00          | 30PV          |
|                | 84P08    | 8"X4" PVC 45 Degree Wye (HUB X HUB X HUB)  | White | 6         | 5.33           | 30PV          |
|                | 86P08    | 8"X6" PVC 45 Degree Wye (HUB X HUB X HUB)  | White | 3         | 3.33           | 30PV          |
| <b>STYRENE</b> | 308      | 3" Styrene 45 Degree Wye (HUB X HUB X HUB) | White | 25        | 0.72           | 30ST          |
|                | 408      | 4" Styrene 45 Degree Wye (HUB X HUB X HUB) | White | 20        | 1.00           | 30ST          |
|                | 608      | 6" Styrene 45 Degree Wye (HUB X HUB X HUB) | White | 6         | 3.67           | 30ST          |

## Sanitary Tee



|                | Part No. | Description                               | Color | Pkg. Qty. | Wt. Ea. (lbs.) | Product Class |
|----------------|----------|---|-------|-----------|----------------|---------------|
| <b>PVC</b>     | 3P09     | 3" PVC Sanitary Tee (HUB X HUB X HUB)     | White | 30        | 0.66           | 30PV          |
|                | 4P09     | 4" PVC Sanitary Tee (HUB X HUB X HUB)     | White | 20        | 1.60           | 30PV          |
|                | 6P09     | 6" PVC Sanitary Tee (HUB X HUB X HUB)     | White | 5         | 4.20           | 30PV          |
|                | 8P09     | 8" PVC Sanitary Tee (HUB X HUB X HUB)     | White | 1         | 15.00          | 30PV          |
| <b>STYRENE</b> | 309      | 3" Styrene Sanitary Tee (HUB X HUB X HUB) | White | 30        | 0.53           | 30ST          |
|                | 409      | 4" Styrene Sanitary Tee (HUB X HUB X HUB) | White | 20        | 1.25           | 30ST          |

## Drain Cap



|                | Part No. | Description          | Color | Pkg. Qty. | Wt. Ea. (lbs.) | Product Class |
|----------------|----------|----------------------|-------|-----------|----------------|---------------|
| <b>PVC</b>     | 3P06     | 3" PVC Drain Cap     | White | 25        | 0.20           | 30PV          |
|                | 4P06     | 4" PVC Drain Cap     | White | 25        | 0.28           | 30PV          |
|                | 6P06     | 6" PVC Drain Cap     | White | 15        | 0.93           | 30PV          |
|                | 8P06     | 8" PVC Drain Cap     | White | 10        | 2.40           | 30PV          |
| <b>STYRENE</b> | 306      | 3" Styrene Drain Cap | White | 25        | 0.16           | 30ST          |
|                | 406      | 4" Styrene Drain Cap | White | 25        | 0.30           | 30ST          |
|                | 606      | 6" Styrene Drain Cap | White | 15        | 0.73           | 30ST          |

## Female Adapter



|                | Part No. | Description                           | Color | Pkg. Qty. | Wt. Ea. (lbs.) | Product Class |
|----------------|----------|---------------------------------------|-------|-----------|----------------|---------------|
| <b>PVC</b>     | 3P11     | 3" PVC Female Adapter (HUB X FPT)     | White | 25        | 0.36           | 30PV          |
|                | 4P11     | 4" PVC Female Adapter (HUB X FPT)     | White | 20        | 0.55           | 30PV          |
|                | 613P     | 6" PVC Female Adapter (HUB X FPT)     | White | 24        | 1.08           | 30PV          |
| <b>STYRENE</b> | 311      | 3" Styrene Female Adapter (HUB X FPT) | White | 25        | 0.15           | 30ST          |
|                | 411      | 4" Styrene Female Adapter (HUB X FPT) | White | 20        | 0.45           | 30ST          |

## Fitting Cleanout



|                | Part No. | Description                             | Color | Pkg. Qty. | Wt. Ea. (lbs.) | Product Class |
|----------------|----------|---|-------|-----------|----------------|---------------|
| <b>PVC</b>     | 413P     | 4" PVC Fitting Cleanout (SPT X FPT)     | White | 20        | 0.50           | 30PV          |
| <b>STYRENE</b> | 413      | 4" Styrene Fitting Cleanout (SPT X FPT) | White | 20        | 0.40           | 30ST          |

## MPT Plug



|                | Part No. | Description         | Color | Pkg. Qty. | Wt. Ea. (lbs.) | Product Class |
|----------------|----------|---------------------|-------|-----------|----------------|---------------|
| <b>PVC</b>     | 41P8     | 4" PVC MPT Plug     | White | 30        | 0.36           | 30PV          |
|                | 61P8     | 6" PVC MPT Plug     | White | 24        | 0.62           | 30PV          |
| <b>STYRENE</b> | 418      | 4" Styrene MPT Plug | White | 30        | 0.27           | 30ST          |

Note: All dimensions are nominal. All weights are for shipping purposes only. Availability is subject to change.

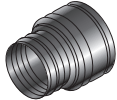
# SOLVENT WELD FITTINGS

## Cross



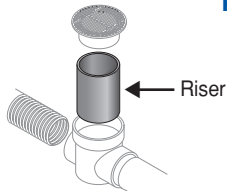
|                | Part No. | Description                              | Color | Pkg. Qty. | Wt. Ea. (lbs.) | Product Class |
|----------------|----------|--|-------|-----------|----------------|---------------|
| <b>PVC</b>     | 4P1X     | 4" PVC Cross (HUB X HUB X HUB X HUB)     | White | 20        | 1.40           | 30PV          |
| <b>STYRENE</b> | 401X     | 4" Styrene Cross (HUB X HUB X HUB X HUB) | White | 20        | 1.20           | 30ST          |

## Corrugated Adapter



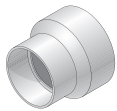
|  | Part No. | Description  | Color | Pkg. Qty. | Wt. Ea. (lbs.) | Product Class |
|--|----------|--|-------|-----------|----------------|---------------|
|  | 351      | 3" Polyethylene Corrugated Adapter (CORR HUB X S&D SPT or HUB) | Black | 50        | 0.10           | 30ST          |
|  | 451      | 4" Polyethylene Corrugated Adapter (CORR HUB X S&D SPT or HUB) | Black | 25        | 0.20           | 30ST          |
|  | 651      | 6" Polyethylene Corrugated Adapter (HUB X S&D SPT)             | Black | 12        | 0.25           | 30ST          |

## Riser Pipe



|            | Part No. | Description                          | Color | Pkg. Qty. | Wt. Ea. (lbs.) | Product Class |
|------------|----------|--------------------------------------|-------|-----------|----------------|---------------|
| <b>PVC</b> | 66*      | 6"X2' PVC Riser Pipe (6 in. X 2 ft.) | Black | 4         | 4.70           | 30AB          |

## DWV to Sewer and Drain Adapter



|            | Part No. | Description  | Color | Pkg. Qty. | Wt. Ea. (lbs.) | Product Class |
|------------|----------|--|-------|-----------|----------------|---------------|
| <b>PVC</b> | 3P12     | 3"X4" PVC DWV to Sewer and Drain Adapter (DWV HUB X S&D HUB) | White | 50        | 0.50           | 30PV          |
|            | 3P15     | 3"X3" PVC DWV to Sewer and Drain Adapter (DWV HUB X S&D HUB) | White | 60        | 0.41           | 30PV          |
|            | 3P16     | 4"X4" PVC DWV to Sewer and Drain Adapter (DWV HUB X S&D HUB) | White | 30        | 0.80           | 30PV          |
|            | 3P17     | 3"X4" PVC DWV to Sewer and Drain Adapter (DWV HUB X S&D SPT) | White | 30        | 0.50           | 30PV          |

## DWV to Sewer and Drain Adapter Bushing



|            | Part No. | Description   | Color | Pkg. Qty. | Wt. Ea. (lbs.) | Product Class |
|------------|----------|---|-------|-----------|----------------|---------------|
| <b>PVC</b> | 2P41     | 3" PVC DWV to S&D Adapter Bushing (DWV SPT X S&D HUB) | White | 50        | 0.12           | 30PV          |
|            | 2P42     | 4" PVC DWV to S&D Adapter Bushing (DWV SPT X S&D HUB) | White | 25        | 0.24           | 30PV          |
|            | 2P43     | 6" PVC DWV to S&D Adapter Bushing (DWV SPT X S&D HUB) | White | 20        | 0.70           | 30PV          |

## Reducer Bushing (SCH.40 HUBxS&D SPT)



|            | Part No. | Description                                      | Color | Pkg. Qty. | Wt. Ea. (lbs.) | Product Class |
|------------|----------|--|-------|-----------|----------------|---------------|
| <b>PVC</b> | 532      | 2"X3" PVC Reducer Bushing (SCH 40 HUB X S&D SPT) | White | 20        | 0.20           | 30PV          |
|            | 533      | 2"X4" PVC Reducer Bushing (SCH 40 HUB X S&D SPT) | White | 20        | 0.35           | 30PV          |

## Reducer Bushing (6 inch S&D SPT)



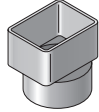
|                | Part No. | Description                                   | Color | Pkg. Qty. | Wt. Ea. (lbs.) | Product Class |
|----------------|----------|---|-------|-----------|----------------|---------------|
| <b>STYRENE</b> | 643      | 6"X4"X3" Styrene Reducer Bushing (6" S&D SPT) | Black | 20        | 0.75           | 30ST          |

Note: All dimensions are nominal. All weights are for shipping purposes only. Availability is subject to change.

# SOLVENT WELD FITTINGS

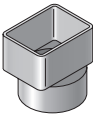
## Down Spout Adapter

### PVC for Standard Sewer and Drain Pipe



|                | Part No. | Description                                       | Color | Pkg. Qty. | Wt. Ea. (lbs.) | Product Class |
|----------------|----------|---|-------|-----------|----------------|---------------|
| <b>PVC</b>     | 9P03     | 2"X3"X3" Offset Down Spout Adapter (Fits 3" pipe) | White | 40        | 0.42           | 30PV          |
|                | 9P04     | 2"X3"X4" Offset Down Spout Adapter (Fits 4" pipe) | White | 30        | 0.53           | 30PV          |
|                | 9P06     | 3"X4"X4" Down Spout Adapter (Fits 4" pipe)        | White | 30        | 0.50           | 30PV          |
|                | 9P10     | 4"X6"X6" Offset Down Spout Adapter (Fits 6" pipe) | White | 8         | 1.00           | 30PV          |
| <b>STYRENE</b> | 903      | 2"X3"X3" Offset Down Spout Adapter (Fits 3" pipe) | White | 40        | 0.33           | 30ST          |
|                | 904      | 2"X3"X4" Offset Down Spout Adapter (Fits 4" pipe) | White | 30        | 0.40           | 30ST          |
|                | 906      | 3"X4"X4" Down Spout Adapter (Fits 4" pipe)        | White | 30        | 0.40           | 30ST          |

### PVC for DWV or Sch. 40 Pipe



|            | Part No. | Description                                | Color | Pkg. Qty. | Wt. Ea. (lbs.) | Product Class |
|------------|----------|--|-------|-----------|----------------|---------------|
| <b>PVC</b> | 9P07     | 2"X3"X3" Down Spout Adapter (Fits 3" pipe) | White | 40        | 0.30           | 30PV          |
|            | 9P08     | 2"X3"X4" Down Spout Adapter (Fits 4" pipe) | White | 30        | 1.10           | 30PV          |
|            | 9P09     | 3"X4"X4" Down Spout Adapter (Fits 4" pipe) | White | 30        | 0.44           | 30PV          |

## Pool Accessories

### Drain Grate



|                | Part No. | Description                      | Color | Pkg. Qty. | Wt. Ea. (lbs.) | Product Class |
|----------------|----------|----------------------------------|-------|-----------|----------------|---------------|
| <b>PVC</b>     | 9P12     | 3" PVC Drain Grate (S&D SPT)     | White | 50        | 0.16           | 30PV          |
|                | 9P11     | 4" PVC Drain Grate (S&D SPT)     | White | 25        | 0.36           | 30PV          |
| <b>STYRENE</b> | 912      | 3" Styrene Drain Grate (S&D SPT) | White | 50        | 0.12           | 30ST          |
|                | 911      | 4" Styrene Drain Grate (S&D SPT) | White | 25        | 0.24           | 30ST          |

### Deck Drain



|                | Part No. | Description                        | Color | Pkg. Qty. | Wt. Ea. (lbs.) | Product Class |
|----------------|----------|------------------------------------|-------|-----------|----------------|---------------|
| <b>STYRENE</b> | WC100    | 3" Styrene Deck Drain (3" S&D HUB) | White | 50        | 0.16           | 30ST          |
|                | WC100G   | 3" Styrene Deck Drain (3" S&D HUB) | Gray  | 50        | 0.16           | 30ST          |
|                | WC100T   | 3" Styrene Deck Drain (3" S&D HUB) | Tan   | 50        | 0.16           | 30ST          |

### Deck Drain Adapter



|                | Part No. | Description                                    | Color | Pkg. Qty. | Wt. Ea. (lbs.) | Product Class |
|----------------|----------|--|-------|-----------|----------------|---------------|
| <b>STYRENE</b> | WC150    | 2" Styrene Deck Drain Adapter (2" SCH. 40 HUB) | White | 10        | 0.70           | 30ST          |

### Pool Back Flush Fitting



|  | Part No. | Description  | Color | Pkg. Qty. | Wt. Ea. (lbs.) | Product Class |
|--|----------|--|-------|-----------|----------------|---------------|
|  | 650      | 4" Polyethylene Pool Back Flush Fitting (Includes 4" grate.) | Black | 35        | 0.16           | 30ST          |

Note: All dimensions are nominal. All weights are for shipping purposes only. Availability is subject to change.