

CHECK 548B/548T

BRONZE SPRING CHECK VALVE*

RATING

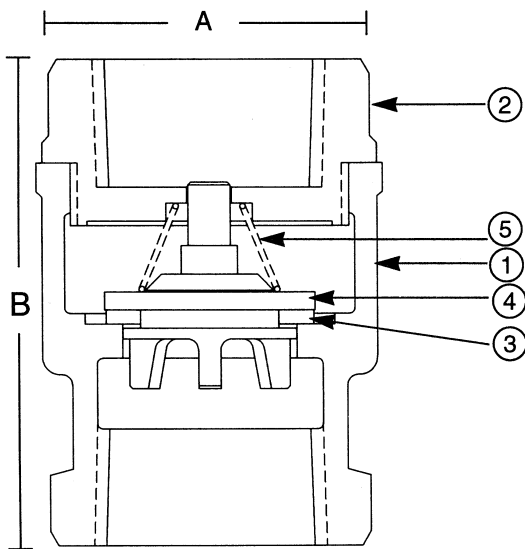
- 250 PSI NON-SHOCK COLD WATER, OIL OR GAS

FEATURES

- BRONZE BODY
- THREADED ENDS
- BRONZE SPRING
- BUNA DISC RING
- BRONZE DISC HOLDER
- 100% FACTORY TESTED
- SILENT CLOSING
(minimizes water hammer)

MATERIAL SPECIFICATION

NO.	PART	MATERIAL	SPECIFICATION
1	Body	Cast Bronze	ASTM B584, C84400
2	Tail Piece	Cast Bronze	ASTM B584, C84400
3	Disc	Buna/TFE	
4	Disc Holder	Cast Bronze	ASTM B584, C85700
5	Spring	Bronze	ASTM B103, C52100



Do not use for reciprocating air compressor service.

DIMENSIONS - INCHES / MILLIMETERS					
UNITS	SIZE	A	B	Weight	C _v
Inches	3/8	1.22	1.97	0.35	2.5
mm	9.5	31.0	50.1		
Inches	1/2	1.22	2.09	0.44	4.1
mm	12.7	31.0	53.2		
Inches	3/4	1.50	2.31	0.57	7.6
mm	19.1	38.1	58.8		
Inches	1	1.91	2.66	0.89	13.0
mm	25.4	48.4	67.5		
Inches	1 1/4	2.16	3.09	1.28	23.0
mm	37.8	54.8	78.6		
Inches	1 1/2	2.59	3.31	1.72	31.0
mm	38.1	65.9	84.2		
Inches	2	3.13	3.78	2.58	54.0
mm	50.8	79.4	96.0		

* International VALVE

Rev. 5

INNOVATION IN EVERY VALVE



MILWAUKEE VALVE

The information presented on this sheet is correct at the time of publication. Milwaukee Valve reserves the right to change design, and/or material specifications without notice. For the Installation, Operation and Maintenance Manual (IOM) see the engineering section on our website. For the most current information access www.milwaukeevalve.com

www.milwaukeevalve.com