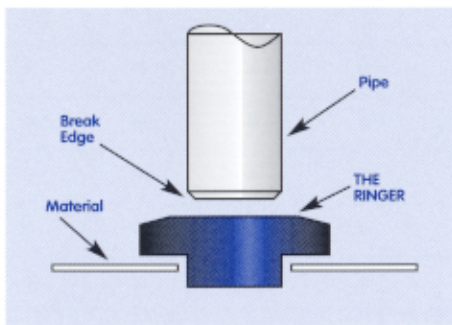




THE RINGER

A POSITIVE
PIPE-TO-TANK SEAL
FOR FLAT OR
CURVED SURFACES



THE RINGER is a pipe-to-tank seal (grommet) that provides positive mechanical sealing for a wide range of pipe and tubing.

THE RINGER is designed for holding tanks but works well in any application where pipe penetrations are required. Proved applications include: water tanks, sump risers, pumping stations, dispenser pans, valve boxes, junction boxes, cooling systems and boats, to name a few. It is ideal for use with PVC, galvanized steel, copper, EMT, rigid conduit, fiberglass and polyethylene pipe.

THE RINGER is designed for pipes of standard outside diameter (SCH 40). The tapered inner diameter forces the outer diameter to expand and securely seal the penetrating piping/tubing without adhesive hardware or threads. It will seal for any flat or curved surface, even if the pipe is at an angle as great as 15°. **THE RINGER** is designed to seal piping penetrations through any material rigid enough to support installation of the seal. Best results are achieved when penetrating plastic, fiberglass or metal.

HOLESAW SELECTION CHART

RINGER Grommet	Part No.	Saw Size
3/8"	G038	1.00"
1/2"	G050	1.25"
3/4"	G075	1.25"
1"	G100	1.75"
1-1/4"	G125	3.00"
1-1/2"	G150	3.00"
2"	G200	3.00"
3"	G300	4.00"
4"	G400	5.00"
4" SDR 35	G400-35	5.00"
6"	G600	7.00"
6" SDR 35	G600-35	7.00"

INSTALLATION INSTRUCTIONS

(See back of brochure for detailed instructions)

1. Place **THE RINGER** into clear cut entry hole.
2. Apply lubricant to inside diameter of **THE RINGER**.
3. Apply lubricant to outside diameter of pipe to be introduced.
4. Force pipe through **THE RINGER**.
5. Apply additional lubricant to the pipe and **THE RINGER** as needed.

*Optional other sizes available with volume.



TOPP INDUSTRIES INCORPORATED

P.O. Box 420 • Rochester, Indiana 46975

Phone: 574-223-3681 • Toll Free: 800-354-4534 • Fax: 574-223-6106

E-mail: toppindustries@toppindustries.com • Website: www.toppindustries.com



RINGER PIPE SEALS

STANDARD PIPING APPLICATION CHART

The RINGER was designed for pipe having the outside diameter (OD) of schedule 40 piping.
As a general rule pipe used that is within .03" of the design OD will perform as designed.

NOMINAL PIPE SIZE	3/8"	1/2"	3/4"	1"	1-1/4"	1-1/2"	2"	3"	4"	6"
SCHEDULE 40 PIPE OD	0.675	0.840	1.050	1.315	1.660	1.900	2.375	3.500	4.500	6.625

PIPE TYPE	NOMINAL PIPE SIZE									
	3/8"	1/2"	3/4"	1"	1-1/4"	1-1/2"	2"	3"	4"*	6"*
PVC Sch 40/80/120	•	•	•	•	•	•	•	•	•	•
Steel	•	•	•	•	•	•	•	•	•	•
Stainless Steel	•	•	•	•	•	•	•	•	•	•
Wrought Iron	•	•	•	•	•	•	•	•	•	•
Type I LPDE Sch 40	•	•	•	•	•	•	•	•	•	•
Type I LPDE 100 PSI	-	•	-	-	-	-	-	-	-	-
Type III HDPE 75 PSI	-	•	•	•	•	•	•	-	-	-
Type III HDPE Sch 40/80	-	•	•	•	•	•	•	•	•	•
Polyethylene SDR-PR	-	•	•	•	•	•	•	•	•	•
CPVC SDR-PR	-	•	•	•	•	•	•	•	•	•
CPVC Sch 40/80	-	•	•	•	•	•	•	•	•	•
ABS Sch 40/80	-	•	•	•	•	•	•	•	•	•
Reinforced Thermoset	-	-	-	-	•	-	•	•	•	•
SPS Copper	-	•	•	•	•	•	•	•	•	•
85 Red Bronze	-	•	•	•	•	•	•	•	•	•
Aluminum Pipe	-	•	•	•	•	•	•	•	•	•
Ridged Steel Conduit	-	-	•	•	•	-	-	•	•	•
EMT Conduit	-	G038	G050	G075	G100	G125	G150	•	•	•

- = Pipe has the exact OD that the RINGER was designed for.
- = There is no RINGER size that will seal the pipe size.

RINGER part numbers indicate that you must use the alternative instead of the RINGER of the same nominal size.

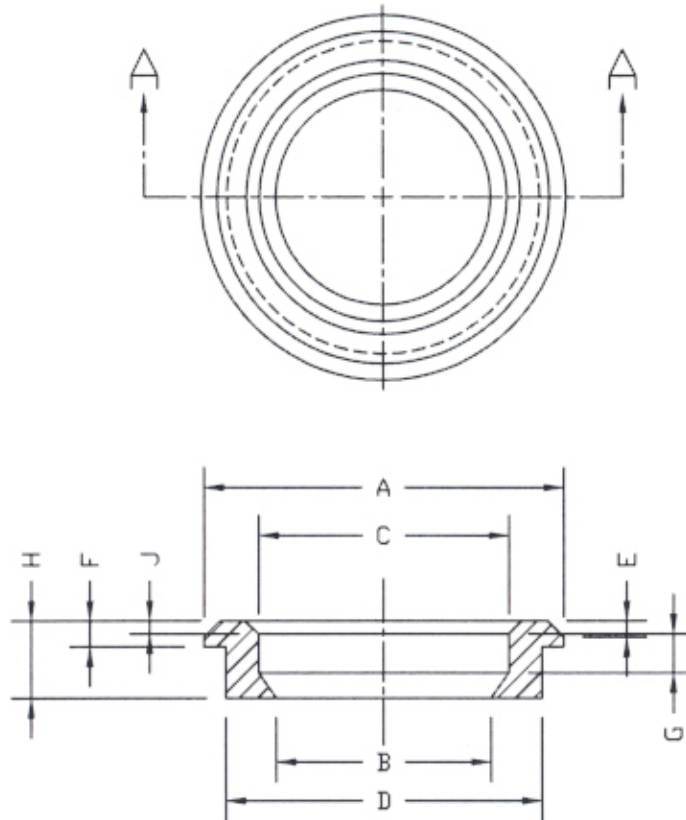
*RINGER Pipe Seals available in 4" and 6" sizes for SDR 35 pipe.



RINGER

DIMENSIONAL

DATA SHEET



SECTION A-A

	G038 3/8"	G050 1/2"	G100 1"	G125 1 1/4"	G150 1 1/2"	G200 2"	G300 3"	G400 4"	G400-35 4"	G600 6"	G600-35 6"
A	1.470	2.000	2.460	2.480	3.010	3.400	4.450	5.750	5.690	8.125	8.200
B	0.480	0.670	1.030	1.380	1.590	2.070	3.270	4.230	3.940	6.250	5.980
C	0.670	0.825	1.310	1.700	2.010	2.450	3.590	4.540	4.250	6.600	6.250
D	1.020	1.270	1.765	2.030	2.535	3.050	4.020	4.985	5.170	7.140	7.060
E	0.160	0.125	0.125	0.100	0.125	0.125	0.160	0.140	0.156	0.125	0.125
F	0.200	0.250	0.250	0.250	0.250	0.250	0.250	0.250	0.250	0.270	0.270
G	0.0250	0.400	0.281	0.312	0.312	0.312	0.375	0.281	0.375	0.438	0.375
H	0.560	0.750	0.750	0.750	0.750	0.750	0.750	0.750	0.750	0.812	0.812
J	0.060	0.125	0.125	0.125	0.125	0.125	0.125	0.125	0.156	0.125	0.187



RINGER INSTALLATION INSTRUCTIONS

1. CUT ENTRY HOLE

Select the required holesaw size from the chart on the front of this sheet. Hold the holesaw **perpendicular** to the surface of the tank or sump and cut the entry hole.



2. CLEAN ENTRY HOLE

Using 10 to 40 grit sandpaper, **lightly sand** the interior of the entry hole. The hole must be smooth and free of debris. **Do not enlarge the entry hole when sanding.**



3. PLACE RINGER

Firmly press the Grommet into the entry hole. **The RINGER must be in place before installing the pipe.**



4. CHAMFER PIPE

The end of the pipe that will be introduced **must be evenly cut** with sharp edges. Chamfer the end of the pipe with sandpaper to taper the diameter of the pipe.



5. LUBRICATE RINGER

Lubricate the interior surface of the RINGER. Be sure that the entire surface has a **heavy coat** of lubricant.



6. LUBRICATE PIPE

Lubricate the end of the pipe that will be introduced into the RINGER. **Apply a heavy coat to the last 6" of pipe.**



7. POSITION PIPE

Position the pipe so that it is **perpendicular to the RINGER** and the material to be penetrated. Center the end of the pipe in the RINGER and slightly twist the pipe.



8. INSERT PIPE

Gradually increasing the amount of force used, push the pipe through the RINGER. You may have to apply more lubricant to force long lengths of pipe through.



Hole saws, lubricants, adhesives and the full line of complimentary products are available through TOPP INDUSTRIES or TOPP distributors.