

# SPECIFICATIONS

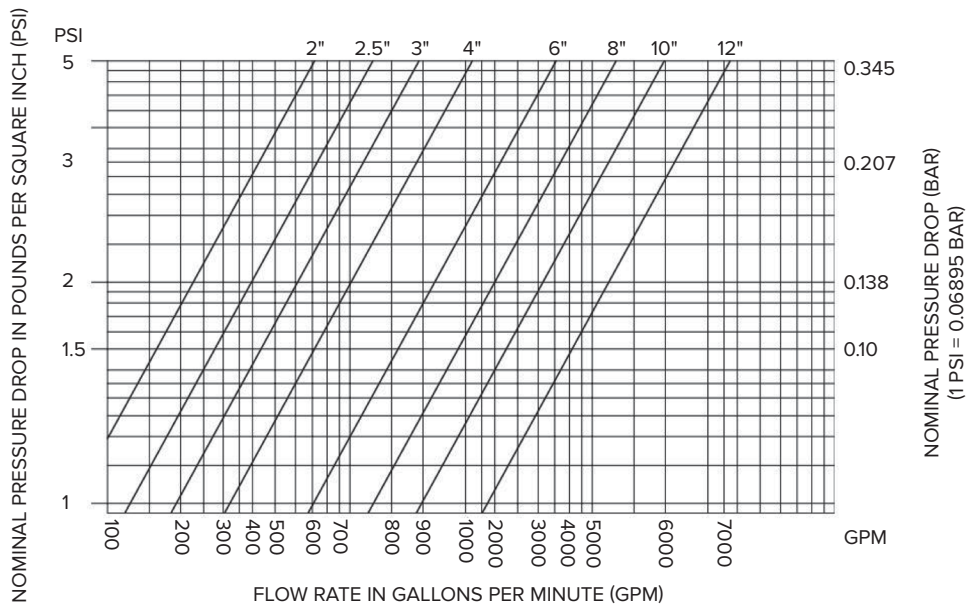
## FIGURE 792 CHECK VALVE



### GROOVED RESILIENT SWING CHECK VALVE

#### FEATURES

- Available sizes: 2"–10"
- Connection ends: Groove to AWWA C606
- Working pressure: 300 psi
- Temperature range: 32°F–175°F
- UL/ULc and FM approved
- Coating: Fusion bonded epoxy coating

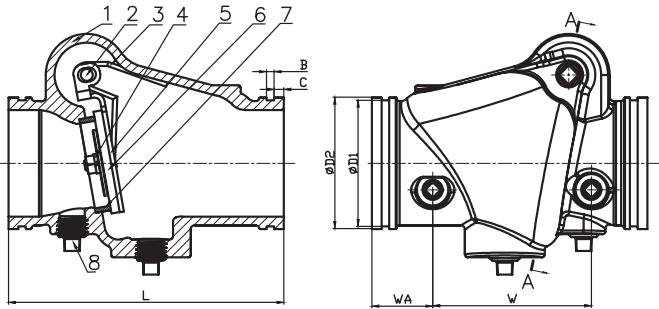


# FIGURE 792

## CHECK VALVE

### GROOVED RESILIENT SWING CHECK VALVE

#### PARTS DIAGRAM



#### PART MATERIALS

Part No.	Part	Material/Specification
1	Valve Body	ASTM A536, 65-45-12
2	Hinge Pin	AISI 420
3	Spring	AISI 304
4	Spring Washer	AISI 304
5	Disc	2"-4": AISI 304 6"-10" ASTM A536, 65-45-12
6	Disc Sealing Ring	EPDM
7	Seat Ring	ASTM B62 C83600 (Pressed Fit)
8	Plug	Galvanized Malleable Iron

#### REFERENCE CHART

Catalog Number	DN		Dimensions (in.)				
	in.	mm	L	D1	D2	B	C
FNW792K	2	50	6.73	2.25	2.37	0.31	0.63
FNW792L	2.5	65	7.24	2.72	2.87	0.31	0.63
FNW792M	3	80	7.76	3.34	3.50	0.31	0.63
FNW792P	4	100	8.27	4.33	4.50	0.38	0.63
FNW792U	6	150	12.76	6.46	6.63	0.38	0.63
FNW792X	8	200	14.61	8.44	8.63	0.44	0.75
FNW79210	10	250	17.99	10.56	10.75	0.50	0.75

## INSTALLATION

Follow the latest grooved coupling manufacture installation procedure for IPS dimension grooved couplings per ANSI/AWWA C606:

1. The arrow cast on the body must point in the direction of the flow.
2. Valves installed vertically must be positioned with the flow in the upward direction.
3. Valves installed horizontally must be positioned with the cover facing up.
4. Grooved end pipe couplings used with Figure 792 Grooved Swing Check Valves must be installed in accordance with manufacturer's instructions.