

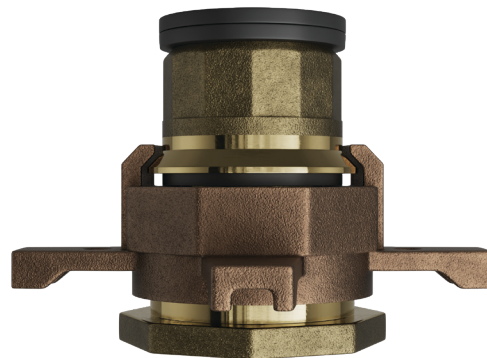
## BRONZE METER YOKE EXPANDER

### Product Specifications

## MX Series

#### Product Features

- Certified to NSF/ANSI 61 and NSF/ANSI 372
- Manufactured in compliance with ANSI/AWWA C800 (latest revision)
- Brass components in contact with potable water conform to ASTM B584, C87850
- Brass components not in contact with potable water are ASTM B584 C83600
- Imported
- Gaskets included
- Lead free
- To be used in water meter application



#### Product Specifications

Part No.	Item	Meter Size	Size	Type	Weight	Width	Height	Length	Expansion	
									Min.	Max.
PSXMXE	LF 5/8 MTR YK Expander	5/8"	5/8"	Handwheel	0.7	3.23"	3.23"	2.15"	1.6"	2"
PSXMXF	LF 3/4 MTR YK Expander	5/8" x 3/4" & 3/4"	3/4"	Handwheel	0.09	3.45"	3.45"	2.4"	1.8"	2.3"
PSXMXG	LF 1 MTR YK Expander	1"	1"	Handwheel	1.9	4.25"	4.25"	2.9"	2.4"	2.9"

#### Material List

No.	Parts	Part No.	Materials	Qty.	Water Contact
1	Cover	TTP - P	PE	1	N
2	Packing Cover	PAKTTP - R	Rubber (EPDM) SE-719F	2	Y
3	Cap	TPI - BZ	Cast Bronze C87850 MOD	1	Y
4	Packing Cap	PAKTPI - R	Rubber (EPDM) SE-719F	1	Y
5	Nut	MUR - BZ	Cast Bronze C83600	1	N
6	Body	BDY - BZ	Cast Bronze C87850 MOD	1	Y
7	Packing Body	PAKBDY - NA	Non-Asbestos TEADIT NA-1005	1	Y

