

ADJUSTABLE ACCESS COVER

» 850 SERIES

SPECIFICATION

Sioux Chief 850 Series adjustable access cover shall be used where necessary to allow access drainage systems. Access cover shall fasten to specified DWV pipe or fitting by means of three set screws which shall be included around lower circumference of the body. Set screws shall allow for 1½" vertical adjustment. Cover shall meet all applicable load requirements for intended use.

MATERIALS

Ring/cover: nickel-bronze, tenzallo or cast iron
Set screws: square head, ¼-20
Cover screw: stainless steel, Phillips head, ¼-20

COVER LOAD RATING

Nickel-bronze: 1,000 lbs. (medium duty)
Tenzalloy: 750 lbs. (light duty)
Cast iron: 7,500 lbs. (heavy duty)

DIMENSIONS

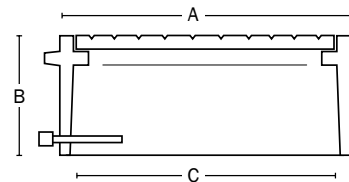
	Nickel-Bronze/ Tenzalloy	Cast Iron*
A: ring/cover diameter		
small model	6½"	6"
medium model	7⅞"	7⅞"
large model	9⅞"	8½"
B: height		
small model	2⅜"	3"
medium model	2¾"	3"
large model	2¾"	3"
C: service diameter		
small model	2⅜" – 5⅜"	2½" – 5½"
medium model	3⅝" – 6⅝"	3⅜" – 6⅝"
large model	5⅝" – 8⅝"	5" – 8"

*Laminated models add ¼" to height and top diameter

ITEM # SUBMITTED	_____
JOB NAME	_____
LOCATION	_____
ENGINEER	_____
CONTRACTOR	_____
PO#	_____ TAG _____



850-2i



Create Item Number

850-ABC

e.g. **850-3TV:** Tenzalloy access cover for 3⅝" – 6⅝" pipe or fitting with vandal-resistant cover screws

CONNECTION SIZE **A**

- 2** = small connection
- 3** = medium connection
- 4** = large connection

RING & COVER **B**

- N** = nickel-bronze
- T** = tenzallo
- i** = cast iron
- iN** = nickel-bronze laminated cast iron

OPTIONS (FACTORY INSTALLED) **C**

- V** = vandal-resistant cover screws
- S** = stamped cover, specify letters¹

¹NOT available for cast iron ring & cover