



Weil-McLain.com

CGi

CAST IRON GAS BOILER

Water | Natural or Propane Gas | 48-222 MBH | 7 sizes
Series 5 | Induced Draft | 84% AFUE



Inducer cover on
sizes 25-6 only

CGiTM

Now features Unity-CI control with text-based screen

Includes built-in low water cut off

Ideal for residential and commercial installations

Durable cast iron design for long service life

Built by North America's leading boiler manufacturer

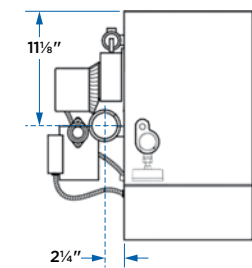


Integrates with our ECOTM HP
Air-to-Water Heat Pump

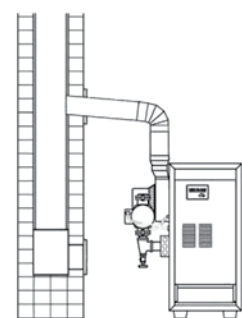


DIMENSIONS

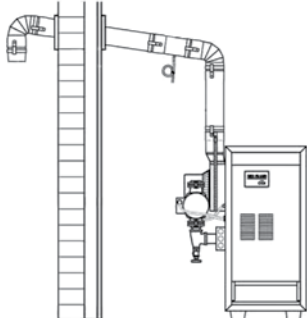
INDUCED DRAFT VENTING OPTIONS



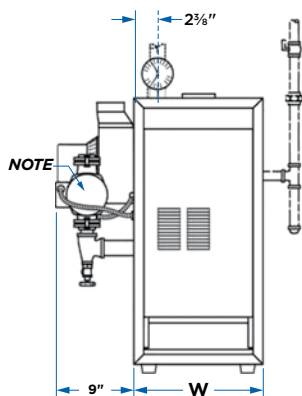
TOP VIEW



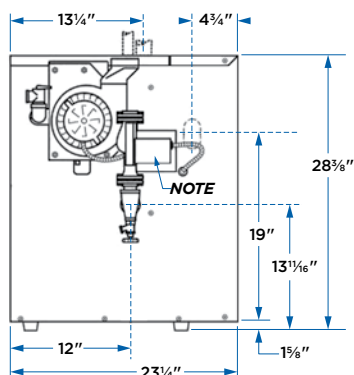
NATURAL DRAFT VENTING



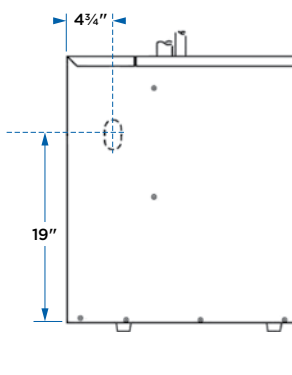
DIRECT EXHAUST VENTING



FRONT



LEFT SIDE



RIGHT SIDE

NOTE: Boiler circulator is shipped loose. Circulator may be mounted on either boiler supply or return piping. See dimension chart for pipe size of circulator flange provided.

| Model | Dimensions inches W | Supply Piping (in.) ¹ | Return Piping (in.) ¹ | Nat or LP Gas Connection Size (in.) |
|--------|---------------------|----------------------------------|----------------------------------|-------------------------------------|
| CGi-25 | 10 | 3/4 | 3/4 | 1/2 |
| CGi-3 | 10 | 1 | 1 | 1/2 |
| CGi-4 | 13 | 1 | 1 | 1/2 |
| CGi-5 | 16 | 1 | 1 | 1/2 |
| CGi-6 | 19 | 1 1/4 | 1 1/4 | 1/2 |
| CGi-7 | 22 | 1 1/4 | 1 1/4 | 3/4 |
| CGi-8 | 25 | 1 1/2 | 1 1/2 | 3/4 |

¹Circulator flange supplied with boiler is the same size as recommended pipe size. For supply and return boiler tapping size, see installation manual.

RATINGS

| Model ² | CSA Input MBH ³ | DOE Heating Capacity MBH ³ | Net AHRI Water Ratings MBH ⁴ | AFUE | Approx. Shipping Weight (Lbs.) | Boiler Water Content (Gal.) | Minimum Vent Connector Diameter ⁵ |
|--------------------|----------------------------|---------------------------------------|---|-------|--------------------------------|-----------------------------|--|
| CGi-25 | 48 | 41 | 36 | 84.0% | 200 | 1.5 | 4" O.D. |
| CGi-3 | 58 | 49 | 43 | 84.0% | 200 | 1.5 | 4" O.D. |
| CGi-4 | 90 | 77 | 68 | 84.0% | 245 | 2.1 | 5" O.D. |
| CGi-5 | 119 | 102 | 89 | 84.0% | 290 | 2.7 | 5" O.D. |
| CGi-6 | 158 | 135 | 117 | 84.0% | 335 | 3.3 | 5" O.D. |
| CGi-7 | 190 | 162 | 141 | 84.0% | 390 | 3.8 | 6" O.D. |
| CGi-8 | 222 | 189 | 164 | 84.0% | 420 | 4.4 | 6" O.D. |

²Add "PIN" for natural gas, "PIL" for propane.

³Based on standard test procedures prescribed by the United States Department of Energy.

⁴Net AHRI ratings are based on net installed radiation of sufficient quantity for the requirements of the building and nothing needs to be added for normal piping and pick-up. Ratings are based on a piping and pick-up allowance of 1.15. An additional allowance should be made for unusual piping and pick-up loads.

⁵Refer to National Fuel Gas Code, ANSI Z223.1-latest edition for chimney sizing and vent connector lengths.

CGi boilers are C.S.A. design certified for installation on combustible flooring. Tested for 50 PSI working pressure.

STANDARD EQUIPMENT: BOILER

- Unity-CI Control Module with text-based screen
- Integrated low-water cutoff, with test button
- Combination pressure-temperature gauge
- Two-piece, top jacket panel
- Insulated extended steel jacket
- Cast iron sections with built-in air separator
- Radiation plates
- Steel base
- Inducer assembly (with cover—sizes 25-6 only)
- Flue gas collector/transition assembly
- Combination gas valve for 24 volt
- Wiring harness
- Air pressure switch
- Non-linting pilot burner
- High-grade stainless steel burners
- 50 VA transformer
- Electrical junction box
- Rollout thermal fuse element
- High-limit temperature control
- Circulator (when ordered)
 - Sizes 25-5: Taco 007e
 - Sizes 6-8: Taco 007
- 30 PSI ASME relief valve (boiler sections tested for 50 PSI working pressure)
- Drain valve

ADDITIONAL EQUIPMENT:

- CGi AL29-4C stainless steel vent starter kit
- Outdoor reset kit (part #381-356-586) Low cost, simple plug-in sensor—check local utility program for possible rebate.
- Expansion tank package—shipped in separate carton (expansion tank, fill & check valve, auto air vent and fittings)
- High Altitude Kits

LIMITED TRANSFERABLE WARRANTY:

- Residential: 20 Years Heat Exchanger; 2 Years Parts
- Commercial: 10 Years Heat Exchanger; 1 Year Parts

